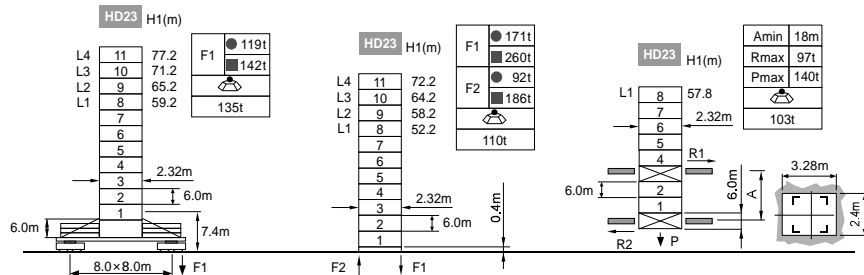


臂根铰点高度 Jib root hinge height

如果需要特殊高度请与我们联系。Please consult with us in case higher freestanding height needed.



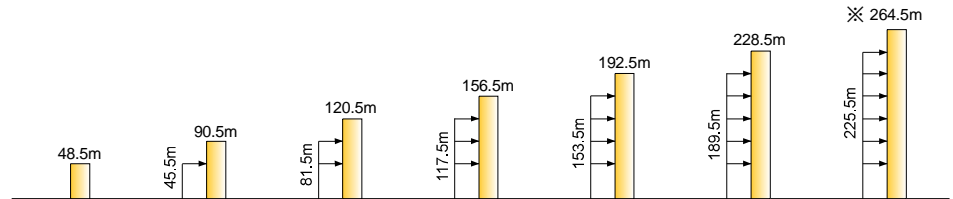
● 工作状态 In service F 反力 Reactions ■ 非工作状态 Out of service
 ▲ 自重 (不含平衡重及压重) total weight of free standing height (excludes counter weight and ballast)

负荷特性 Load diagrams

R	falls	R(C _{MAX})	C _{MAX}	m	20	22	25	27	30	32	35	37	40	42	45	47	50	52	55	57	60
60m	☺	5.4-38.0	12	t	12.0	12.0	12.0	12.0	12.0	12.0	12.0	12.0	11.0	10.2	9.0	8.3	7.4	6.8	6.1	5.6	5.0
50m	☺	4.5-38.8	12	t	12.0	12.0	12.0	12.0	12.0	12.0	12.0	12.0	11.4	10.6	9.4	8.7	7.8				
	☹	4.5-29.3	18	t	18.0	18.0	18.0	18.0	17.4	15.9	14.0	12.9	11.4	10.6	9.4	8.7	7.8				
40m	☺	3.6-40.0	12	t	12.0	12.0	12.0	12.0	12.0	12.0	12.0	12.0	12.0								
	☹	3.6-30.1	18	t	18.0	18.0	18.0	18.0	18.0	18.0	16.6	14.7	13.5	12.1							
30m	☺	2.7-30.0	12	t	12.0	12.0	12.0	12.0	12.0												
	☹	2.7-24.0	18	t	18.0	18.0	18.0	18.0	18.0	16.6	14.7	13.5	12.1								

附着 Anchorages

HD23 塔身高度 Tower body height



※ 超过此高度请联系我们 Over this height please contact us

机构 Mechanisms

☺	150LVF60	☺	m/min	0 ~ 54	0 ~ 80	110kW	1040m >1040m※
		☺	t	12	6		
		☹	m/min	0 ~ 36	0 ~ 53		
		☹	t	18	9		
☺	120VVF60	☺	m/min	2min20s		90kW	
			t				
☺	RCV145	☺	rpm	0 ~ 0.7		2×7.5kW	
			t				
☺	RT443	☺	m/min	0 ~ 25		4×5.2kW	
			t				
⚡		☺	380V 50Hz(±5%)	285kVA		kVA	
			440V 60Hz(±5%)				

※ 请联系我们 Please consult us ▲ 可选 Option