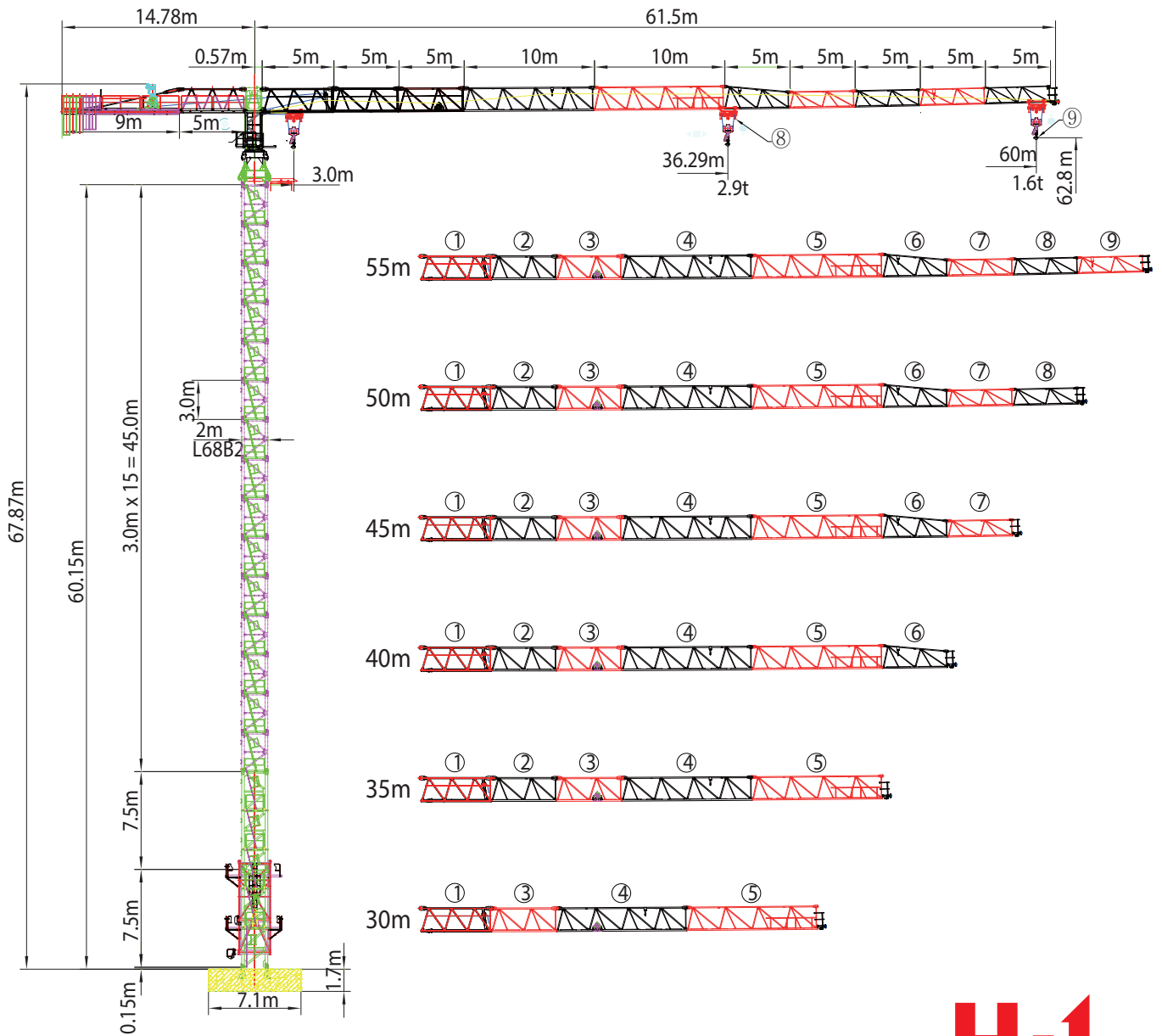


# QP6016-S

## TOPLESS TOWER CRANE

### Outline Dimension



하이웍스(주)

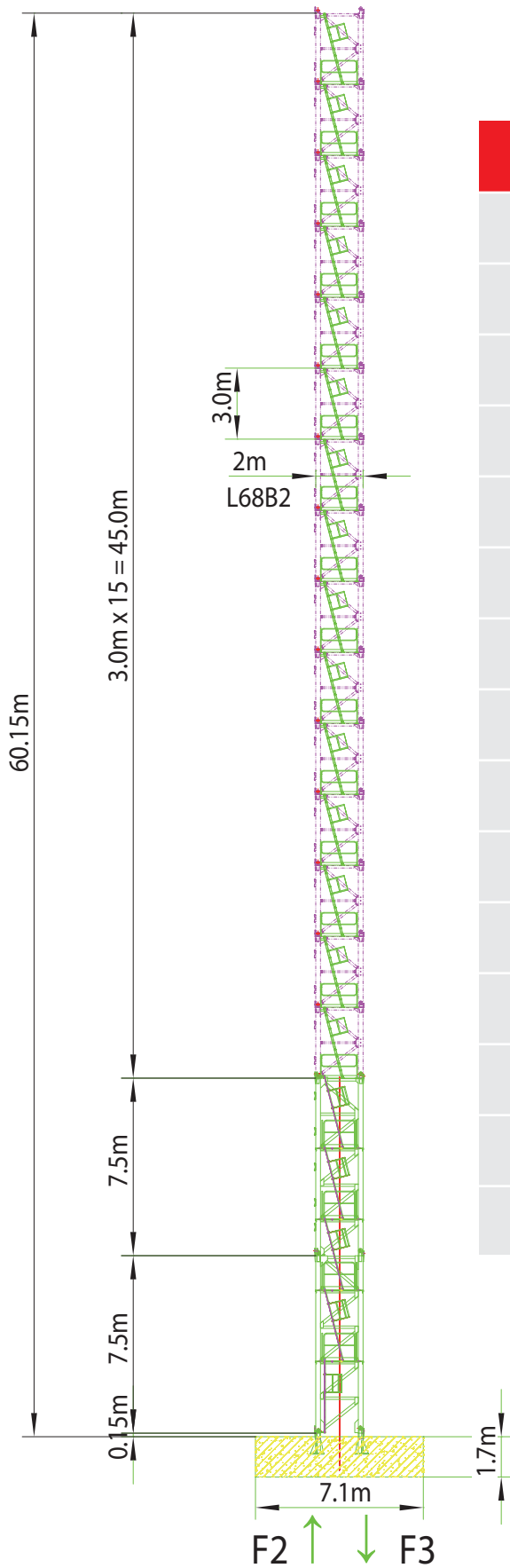
타워크레인 판매전문

[www.highworks.co.kr](http://www.highworks.co.kr)

[lucky230@hanmail.net](mailto:lucky230@hanmail.net)

010-4033-6000

# Reaction Forces



H(m)	HUH
62.8	
59.8	
56.8	
53.8	
50.8	
47.8	
44.8	
41.8	
38.8	
35.8	
32.8	
29.8	
26.8	
23.8	
20.8	

- IN SERVICE WIND SPEED UP TO 20m/s.  
 - OUT OF SERVICE WIND SPEED UP TO 42m/s.

F2	● 142 Ton	■ 249 Ton
F3	● 97 Ton	■ 209 Ton
WEIGHT	63.6 Ton	

## LOAD CHARACTERISTICS

### LOAD DIAGRAM FOR 60m Jib

WORKIGN RANGE(m)		3-36.29	37	38	39	40	42	45	47	50	52	55	57	60
LOAD(T)	2-FALL	2.90	2.84	2.75	2.67	2.59	2.45	2.26	2.15	2.00	1.90	1.78	1.70	1.60

### LOAD DIAGRAM FOR 55m Jib

WORKIGN RANGE(m)		3-39.97	42	45	47	50	52	55
LOAD(T)	2-FALL	2.90	2.74	2.53	2.41	2.24	2.14	2.00

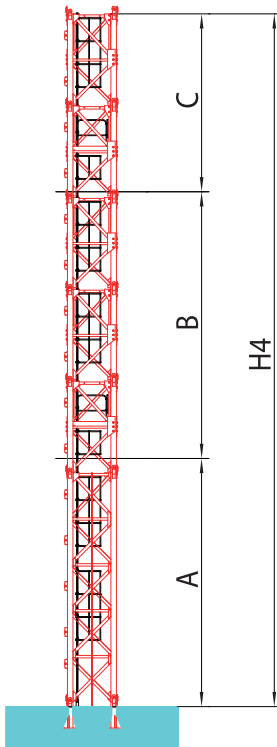
### LOAD DIAGRAM FOR 50/45/40/35/30m Jib

WORKIGN RANGE(m)		3-45.45	46	47	48	49	50
LOAD(T)	2-FALL	2.90	2.86	2.79	2.72	2.66	2.60

## COUNTERWEIGHT

JIB LENGTH(m)		60	55	50	45	40	35	30
TYPE OF BALLAST	A(4.0Ton)	1A+2B +2C	3A+1B	2A+2B	2A+2C	2B+2C	2A+1B	1B+2C
	B(3.5Ton)							
	C(3.0Ton)							
WEIGHT OF BALLAST(Ton)		17.0	15.5	15.0	14.0	13.0	11.5	9.5

## ANCHORAGES



JIB LENGTH 60m	n	
	1	2
A(m)	52.5	
MAST	L68B2	
n1	27	38
H4(m)	96.15	129.15
n2	13	25
H5(m)	52.50	88.65
B(m)	-	36.00
C(m)	43.50	40.50

A : HEIGHT UNDER 1ST ANCHORAGE

B : DISTANCE BETWEEN ANCHORAGES

C : OVERHANG

H4 : TOTAL HEIGHT OF MAST

H5 : HEIGHT OF ANCHORAGE FROM FLOOR

n1 : TOTAL NUMBERS OF MAST

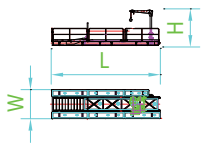
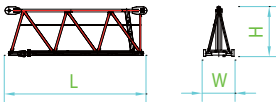
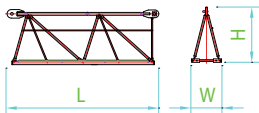
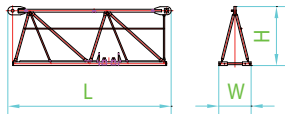
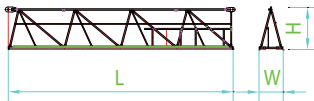
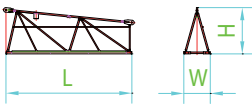
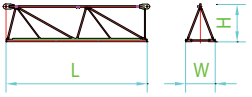
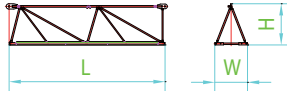
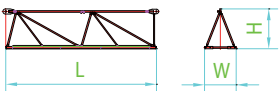
n2 : NUMBERS OF MAST CORRESPONDING TO ANCHORAGE

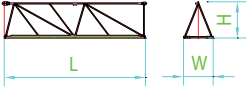
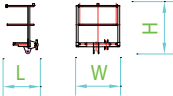
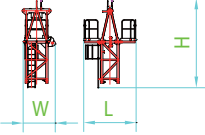
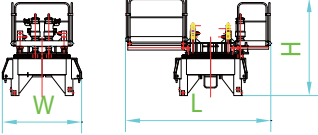
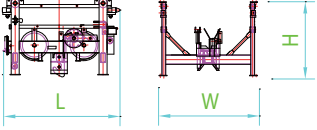
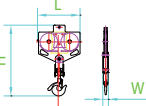
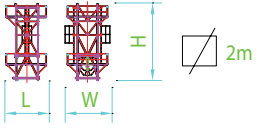
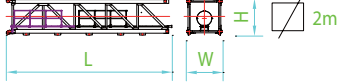
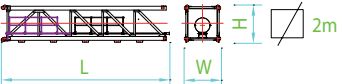
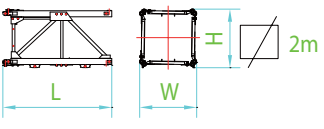
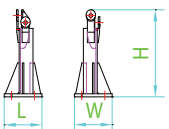
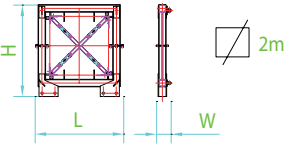
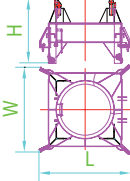
(본 형식신고도서의 III.도면-WALL TIE SYSTEM을 참조)

## MECHANISMS

MECHANISMS SPECIFICATION			2 FALL			DRUM	kW
HOISTING	30LVF15	m/min	36	54	72	400m	22
		Ton	2.9	2.0	1.5		
TROLLEYING	DVF95	m/min	0 - 60				4
SLEWING	RVF95	r/min	0 - 0.7				2 X 4
POWER SUPPLY			380V 60Hz				

# Packing List

Description	Sketch	L(m)	W(m)	H(m)	Weight(Kg)
Counter-jib1		9.13	2.42	3.0	4913
Counter-jib2		5.1	2.42	2.0	1741
Jib Section1		5.73	1.23	2.0	1716
Jib Section2		5.32	1.05	2.0	1151
Jib Section3		5.3	1.05	1.91	1147
Jib Section4		10.27	1.05	1.91	1708
Jib Section5		10.22	1.05	1.87	1316
Jib Section6		5.2	1.05	1.84	517
Jib Section7		5.2	1.05	1.34	460
Jib Section8		5.17	1.05	1.33	382
Jib Section9		5.14	1.05	1.31	327

Description	Sketch	L(m)	W(m)	H(m)	Weight(Kg)
Jib Section10		5.11	1.05	1.29	276
Jib Nose		0.92	1.17	1.4	119
Towerhead		3.0	1.86	5	2084.3
Slewing bearer		3.78	2.14	2.65	4665.7
Rear Trolley		1.48	1.31	0.99	252
Pulley block		0.8	0.25	1.33	236
Telscopic Cage		4.31	4.27	7.27	4545
Basic Mast		7.9	2.11	2.13	4204
Basic Mast		7.9	2.11	2.13	5011
Mast		3.26	2.11	2.11	1455.1
Fixing angles		0.58	0.58	1.2	291
Anchorage Frame		3	0.62	2.76	1397
Turn table		2.5	2.3	1.76	2380