



하이웍스(주) [www.highworks.co.kr](http://www.highworks.co.kr)



**SY-3629**

## Luffing tower crane

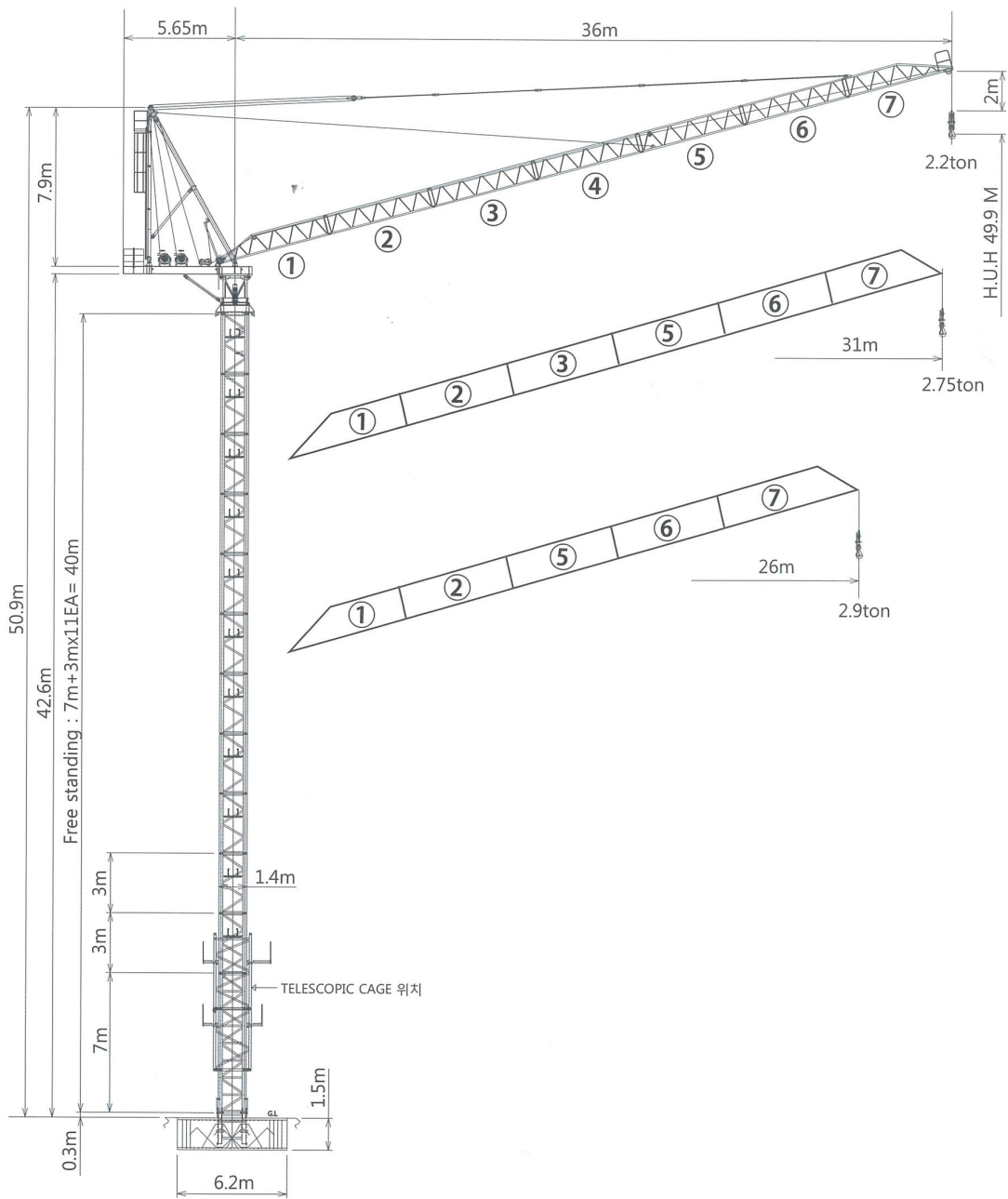
### Specifications

Max jib length : 36m

Tip Load Capacity : 2.9t

Free standing height : 40m



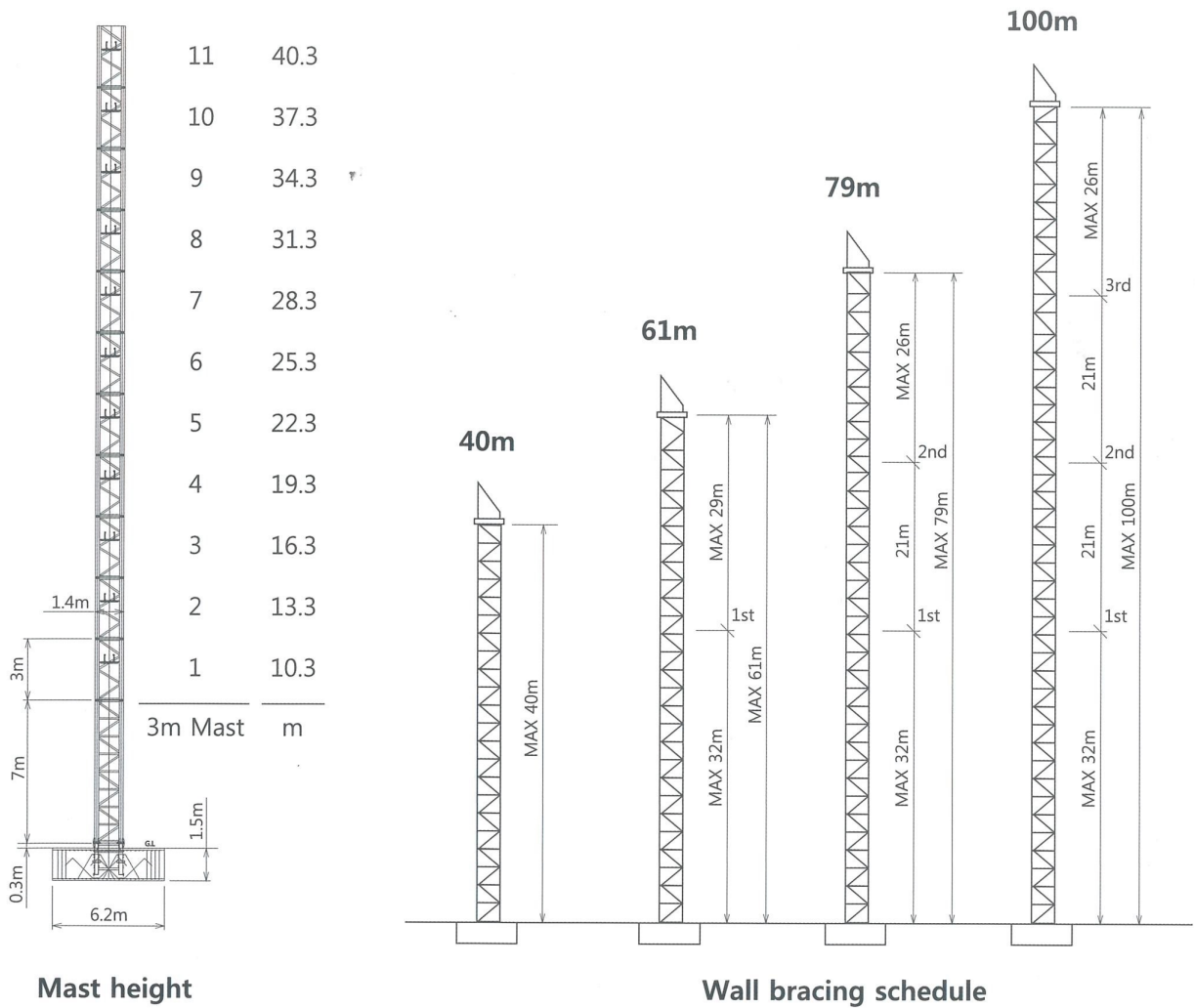


## Load capacity

### MAIN JIB 길이별 정격 하중표

작업 반경 (Radius)	Max.Capacity	Radius and capacity						
		M	21.0	26.0	28.0	31.0	33.0	36.0
Jib 36.0 M	2900 KG	kg	2900	2900	2900	2600	2450	2200
Jib 31.0 M	2900 KG	kg	2900	2900	2900	2750		
Jib 26.0 M	2900 KG	kg	2900	2900				

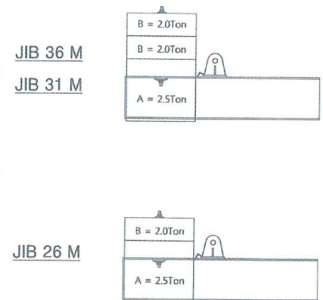


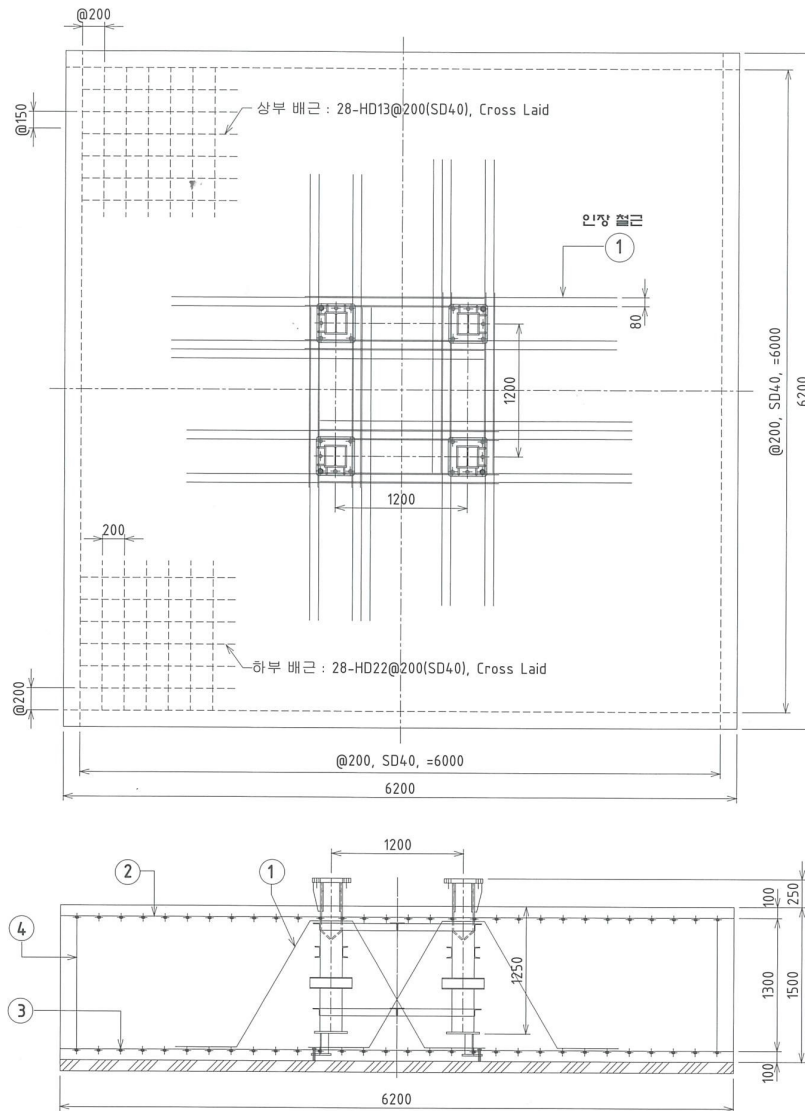


## Counter weight block schedule

### BALLAST BLOCK

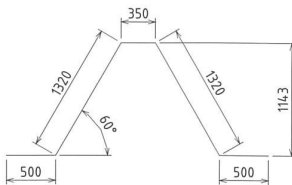
MAIN JIB 길이	BALLAST BLOCK 수량		BLOCK 중량
	A - Type	B - Type	A - Type : 2.5 Ton B - Type : 2.0 Ton
36 M	1A	2B	1A + 2B = 6.5 ton
31 M	1A	2B	1A + 2B = 6.5 ton
26 M	1A	1B	1A + 1B = 4.5 ton





## ② 인장 철근

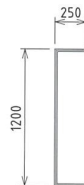
HD25, SD40  
L=4.0M per ANCHOR  
4(ANCHOR) x 9EA = 36 EA



② CROSS LAID HD13(SD40)\*@200\*6100L - 61EA

③ CROSS LAID HD22(SD40)\*@200\*6100L - 61EA

④ HD13(SD40)\*@400x1700L - 61EA



### NOTE

1. CONCRETE 압축강도 : 240 kg/Cm<sup>2</sup>
2. 허용 지내력 : 18 ton/m<sup>2</sup>
3. 철근 : SD 40
4. 버림콘크리트 두께 : 100mm이상

### ANCHOR 설치시 주의사항

버림콘크리트 타설후 ANCHOR를 가설치한 상태에서 BASIC MAST와 결합되는 4개소 PLATE의 레벨을 정확히 맞추고, 콘크리트 타설이나 외부의 힘에 의해 움직이지 않도록 충분한 보강을 한 후, 레벨을 필히 재확인 하여야 함.

### \* 중요 사항

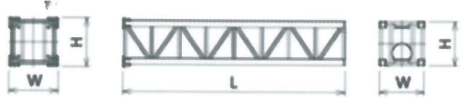






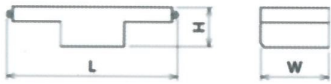
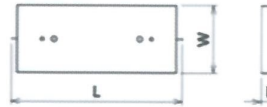
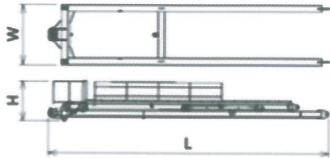
지내력이 부족한 지역에서는 TOWER CRANE의 기초가 침하되어 TOWER CRANE의 안전성에 위험이 따르므로 FRICTION PILE 및 기타방법으로 보강되어 져야 한다.



TECHNICAL DATA

항 목		내 용	
1. 정격하중 (Rated Load)		Max Load. 2.9 ton	
		Tip Load. 36m - 2.2 ton	
2. 주권의 달기구	종 류	2 Falls / 2.9 ton용	
	자체하중	130 Kg	
3. 작업반경 (Working Radius)		Min. 3.0m~ 지브 26m ~ 36m	
4. 양 정		Free Standing : Max. 40m (mast) Max. Height : 100m (mast)	
5. 속 도	권 상(Hoisting)	Speed	Max. 19.5m/min
		Motor	15 KW
	기 복(Luffing)	Speed	0 ~ 3.5 m/min
		Motor	15 KW
	선 회(Slewing)	Speed	0 ~ 0.5 rpm
		Motor	3.75 KW
	상 승(Climbing)	Speed	350 mm/min
		Motor	3.75 KW
6. 용 도		건설현장 기자재 운반용	
7. 설치위치		<input type="checkbox"/> 옥내 <input checked="" type="checkbox"/> 옥외	
8. 하중을 받는 회수		$1.2 \times 10^5 \sim 2.5 \times 10^5$ (정격하중 50% ~ 63%)	
9. 주위온도 (콘트롤 박스)		- 20 °C ~ 40 °C	
10. 운전조작		<input type="checkbox"/> 운전실 <input type="checkbox"/> 팬던트 <input checked="" type="checkbox"/> 무선리모콘	
11. 방폭 구조 사용 유무		<input type="checkbox"/> 有 <input checked="" type="checkbox"/> 無	
12. WIRE ROPE	권 상	<input checked="" type="checkbox"/> 12mm, 19×7+IWRC C종	
	기 복	<input checked="" type="checkbox"/> 12mm, 35×7(WA) B종	
13. 상 승	Cylinder	<input checked="" type="checkbox"/> 160	
14. 전 원	Main	A.C 380V, 3 $\times$ , 60Hz	
	Control	A.C 110V, 1 $\times$ , 60Hz	
	Main 차단기	100A	
15. 설계기준풍속		16 m/sec (가동시)	
		45 m/sec (비가동시)	
16. 비가동시(태풍시) 지브 각도		15° ~ max 55° 이내로 유지	

PACKING LIST

NO	Q'ty	Description	Length L	Width W	Height H	Unit We't Kg
1	1	BASIC MAST 	7.0	1.55	1.55	2830
	11	MAST 	3.0	1.40	1.40	1180
2	1	TELESCOPIC CAGE 	7.45	1.80	1.80	2550
3	1	JIB #1 	6.48	1.00	1.075	380
4	1	JIB #2	5.28	1.00	1.075	332
	1	JIB #3	5.28	1.00	1.075	332
	1	JIB #4	5.28	1.00	1.075	332
	1	JIB #5	5.28	1.00	1.075	332
	1	JIB #6	5.28	1.00	1.075	332
5	1	JIB #7 	5.98	1.00	1.075	360
6	1	COUNTER JIB Winch-2set Platform 	6.56	1.65	2.20	3700
7	1	TURN TABLE 	2.26	1.93	1.93	3200
8	-	Weight -A 	2.69	1.07	0.63	2500
	-	Weight -B 	2.69	1.07	0.312	2000
9	1	TOWER HEAD Platform 	9.06	1.72	1.2	2200

