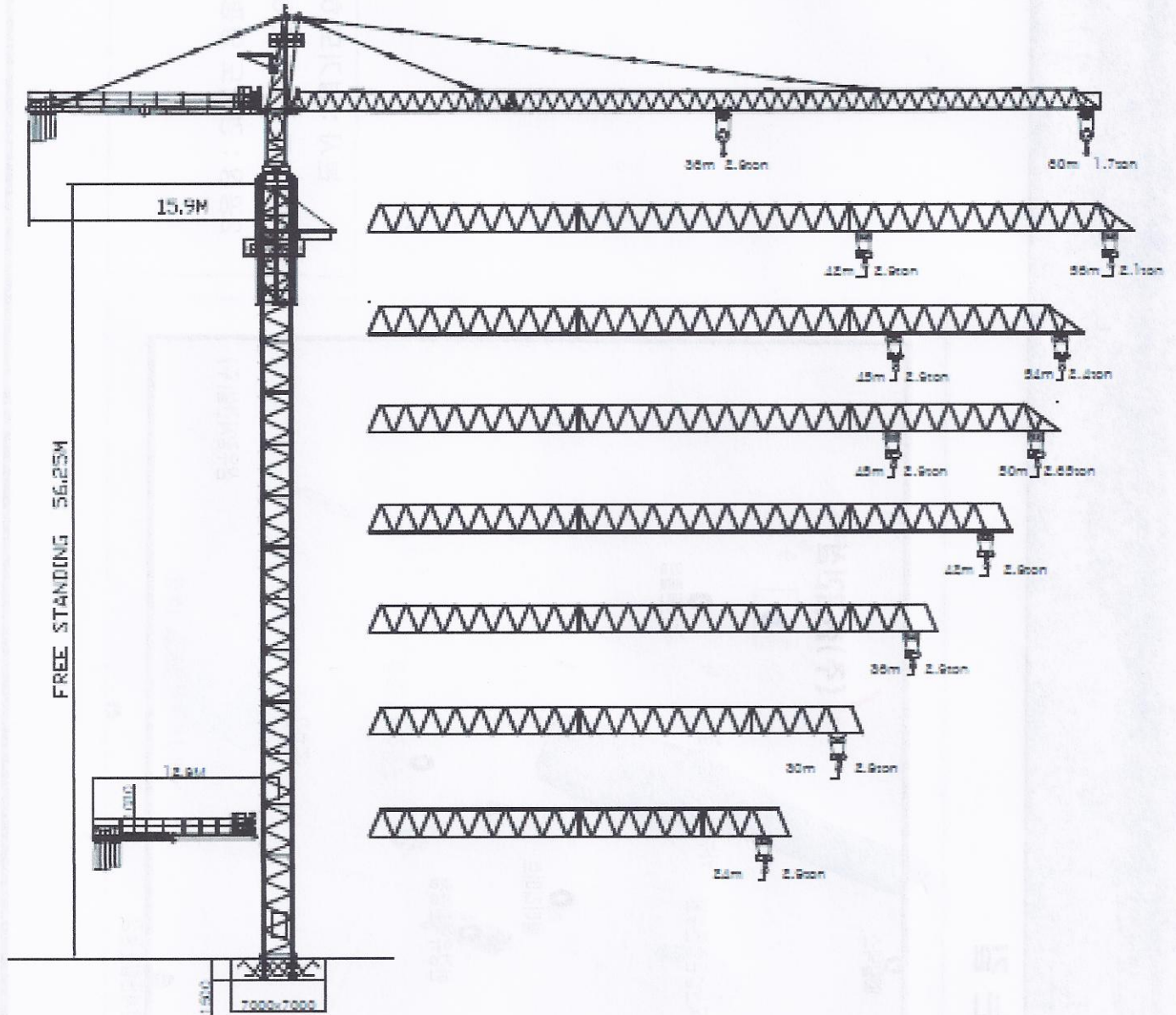


(주) 동아위트레이딩

# TOWER CRANE UT-100

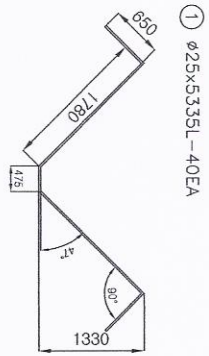
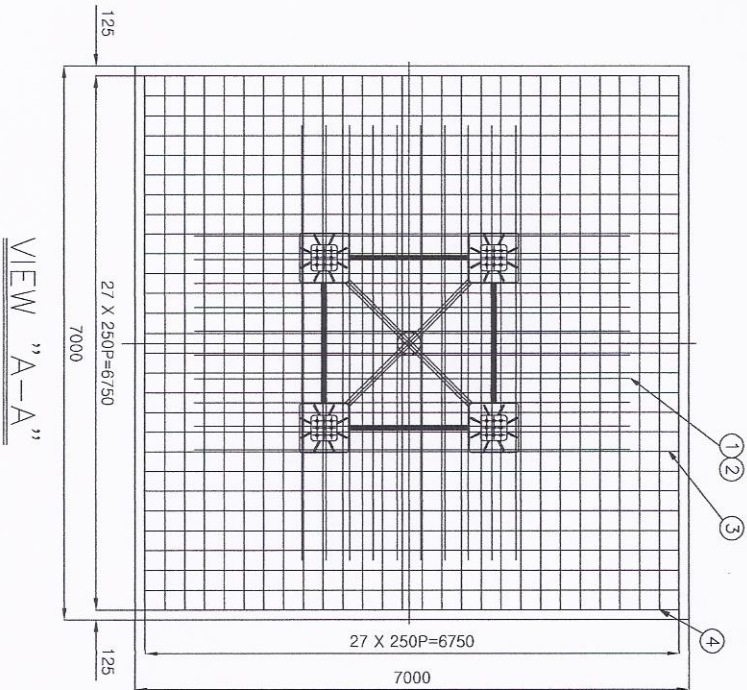
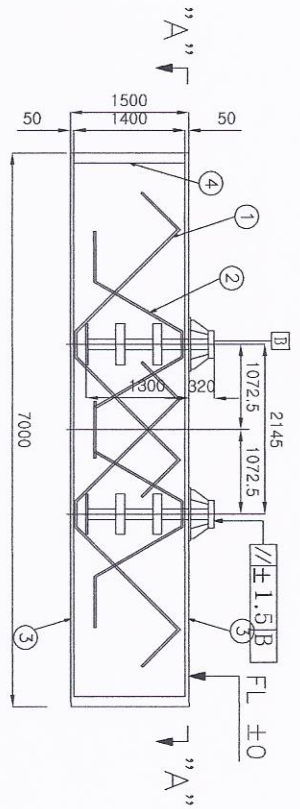


# TOWER CRANE UT-100

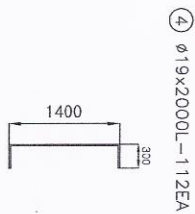
무선리모컨  
무인 TOWER CRANE



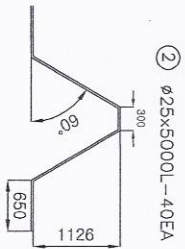




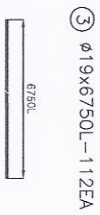
①  $\phi 25 \times 5335L - 40EA$



④  $\phi 19 \times 2000L - 112EA$



②  $\phi 25 \times 5000L - 40EA$



③  $\phi 19 \times 6750L - 112EA$

\* CONCRETE SPECIFIC WEIGHT : 2400KG/M<sup>3</sup>  
 \* SOIL PRESSURE : 20TON/M<sup>2</sup>  
 \* FOUNDATION WEIGHT : 176.4TON

ANCHOR 설치시 주의사항

1. 버림 콘크리트 타설 후 ANCHOR를 가설치할 상태에서 BASIC MAST와 결합되는 4개소 PLATE의 레벨을 정확히 맞추고 콘크리트 타설이나 외부의 힘에 의해 움직이지 않도록 충분한 보강을 한 후, 레벨을 필히 재검사해야 한다.

VIEW "A-A"

NO	DESCRIPTION	SIZE	MAT'L	QTY	REMARK
1	REINFORCING S.BAR	$\phi 25 \times 5285L$	SD40	40	
2	REINFORCING S.BAR	$\phi 25 \times 5000L$	SD40	40	
3	REINFORCING S.BAR	$\phi 19 \times 6750L$	SD40	112	
4	REINFORCING S.BAR	$\phi 19 \times 2000L$	SD40	112	

TITLE: 기초도 - UT100

DWG	DED	CED	OPD	APD	SCALE	PROJECTION
DATE						DWG NO.

