

Build the future

[www.everdigm.com](http://www.everdigm.com)

# EVERDIGM

Tower crane

ED580L-24

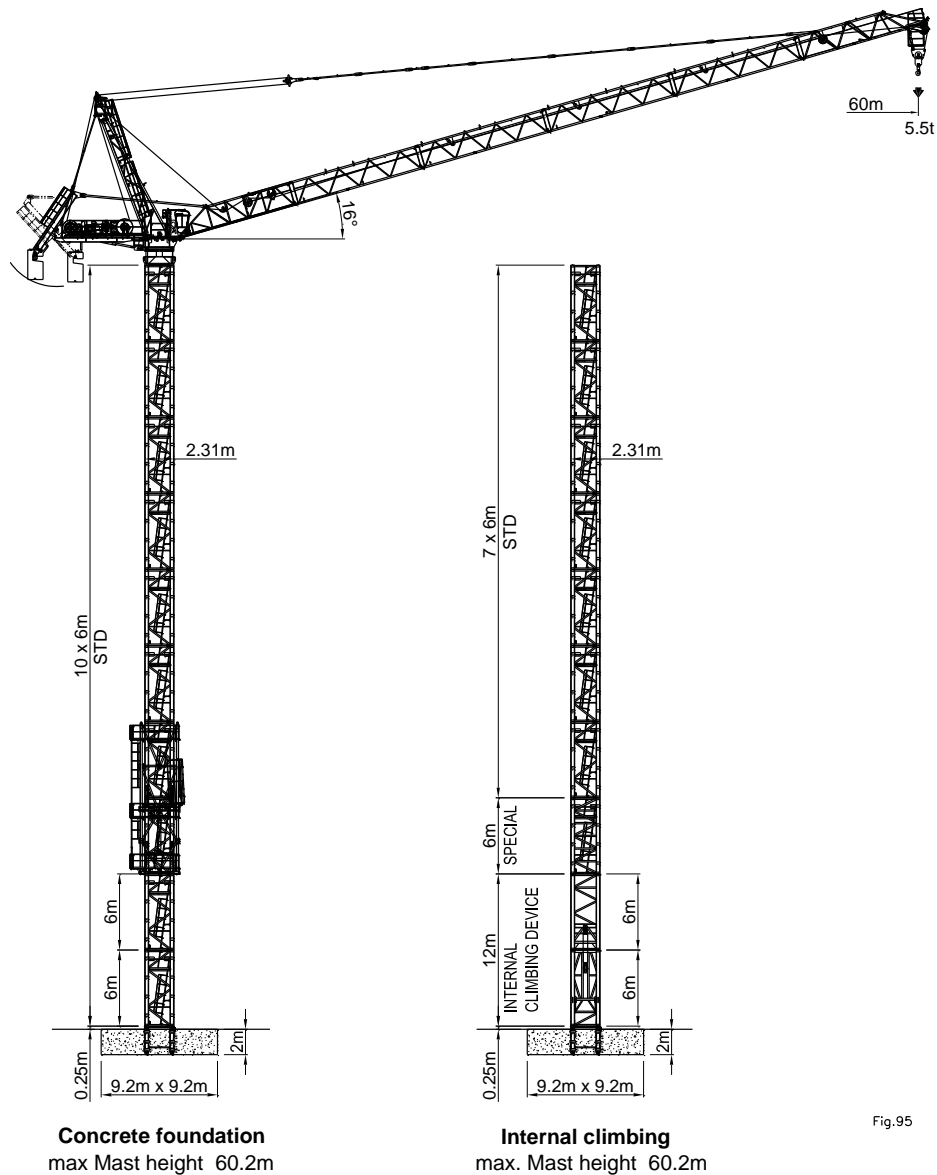


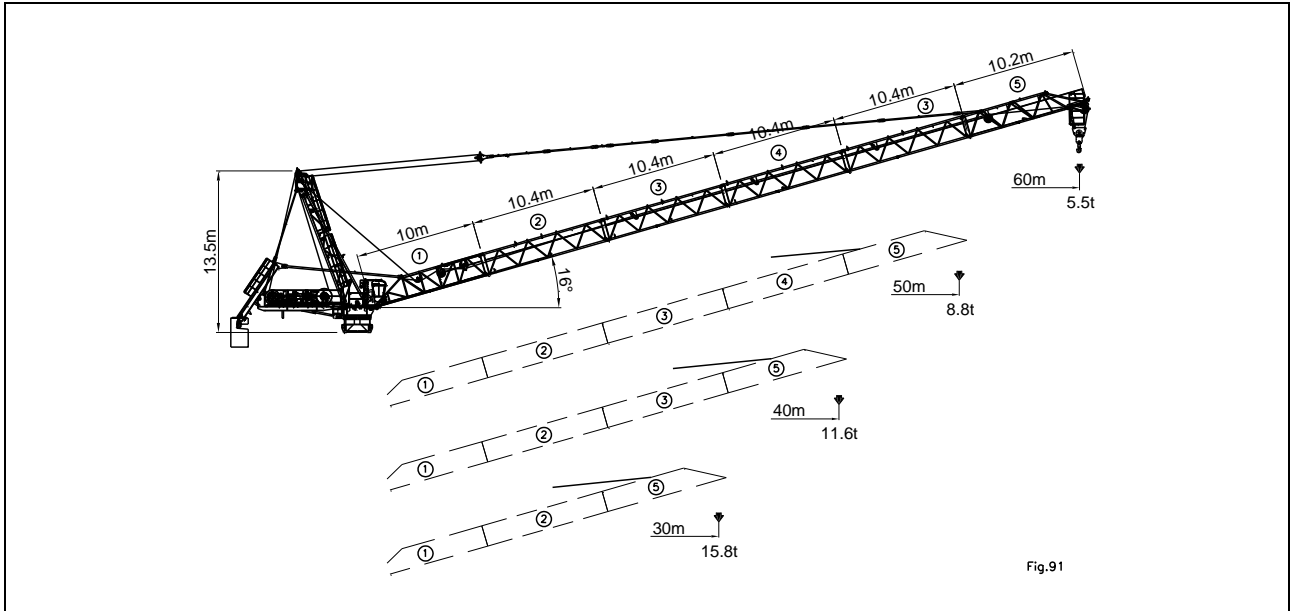
Fig.95



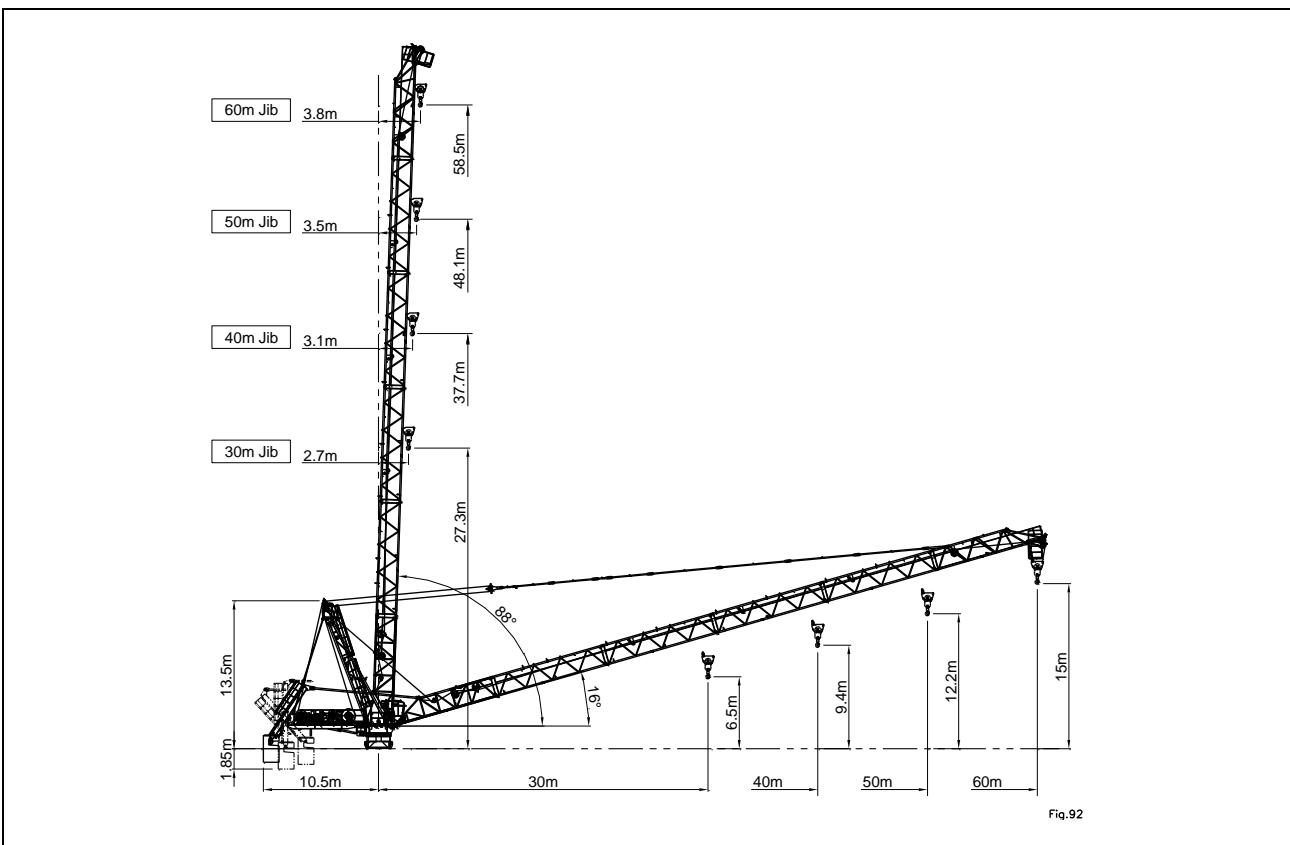
- FEM 1.001 A3
- 건설기계 안전기준에 관한 규칙

## 01. Jib combination

ED580L-24



## 02. Radius and hoisting height



### 03. Mast height

ED580L-24

n	Concrete foundation	Internal climbing	
10	60.2	60.2	
9	54.2	54.2	
8	48.2	48.2	
7	42.2	54.2	
6	36.2	48.2	
5	30.2	42.2	
4	24.2	36.2	
3	18.2	30.2	
2	12.2	24.2	
1	6.2	18.2	
0	0.2	12.2	
6m Mast	m	m	

### 04. Radius and capacity

Jib length m	Max capacity (m/kg)		Radius & Hoisting capacity										
			m/kg	16	20	24	30	35	40	45	50	55	60
60	4.1 – 30.0 12,000	3.8 – 16.0 24,000	2 fall	24,000	18,850	15,417	11,983	10,021	8,550	7,406	6,490	5,741	5,200
			1 fall	12,000	12,000	12,000	12,000	10,321	8,850	7,706	6,790	6,041	<b>5,500</b>
50	3.8 – 38.0 12,000	3.5 – 20.0 24,000	2 fall	24,000	24,000	19,695	15,389	12,929	11,084	9,648	8,500		
			1 fall	12,000	12,000	12,000	12,000	12,000	11,384	9,948	<b>8,800</b>		
40	3.4 – 39.0 12,000	3.1 – 24.0 24,000	2 fall	24,000	24,000	24,000	17,650	14,021	11,300				
			1 fall	12,000	12,000	12,000	12,000	12,000	<b>11,600</b>				
30	3.0 – 30.0 12,000	2.7 – 24.0 24,000	2 fall	24,000	24,000	24,000	<b>15,800</b>						
			1 fall	12,000	12,000	12,000	12,000						

## 05. Driving performance

ED580L-24

### Hoist winch 147kW - 147HF680 - AC- Stepless



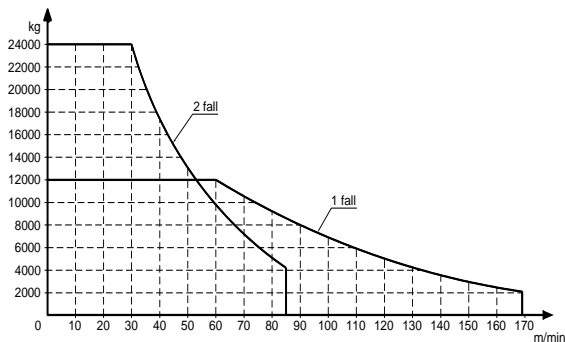
**1 Part** 2,100kg 0 ~ 169m/min

**Line** 12,000kg 0 ~ 60m/min



**2 Part** 4,200kg 0 ~ 85m/min

**Line** 24,000kg 0 ~ 30m/min



### Electrical information

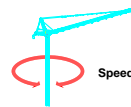
**Power supply** 3ph x 380V, 50/60Hz (Standard)  
3ph x 415V, 50/60Hz (Option)

**Control circuit** 24Vdc

**Power consumption** 250kVA

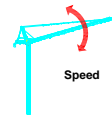
**Power cable** PNCT x 95SQ x 4Core

### Slewing machinery 2Drive units -AC- Stepless



2 x 8.6kW – AC  
0 – 0.71rpm

### Luffing winch 67kW - AC - Stepless



67kW – AC  
1min 43s ~ 2min 48s

### Hoist wire rope - Standard 400m

Necessary wire length according to mast height

$$W = (H \times P) + (R \times P) + R + 46$$

- W (Wire length)
- H (Mast height)
- P (Part line) = 1 or 2
- R (Jib length)

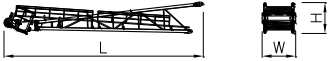






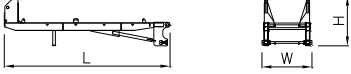


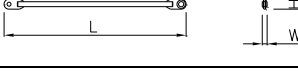
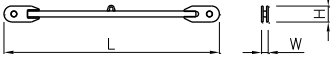

## 06. Packing list I continued I

### Upper part

Description	Q'ty	Sketch	Dimension(m)			Weight (kg,±5%)		
			L	W	H	Unit	Total	
Jib-single element	No.1	1		10.210	2.300	1.960	3,400	-
	No.2	1		10.560	1.910	1.980	1,390	-
	No.3	2		10.560	1.910	1.980	1,490	2,980
	No.4	1		10.560	1.910	1.980	1,510	-
	No.5	1		10.490	1.910	2.510	2,790	-

# 07. Packing list | continued |

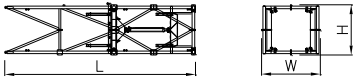
ED580L-24

Description	Q'ty	Sketch	Dimension(m)			Weight (kg,±5%)		
			L	W	H	Unit	Total	
Top tower ass'y	1		12.510	2.110	1.920	6,700	-	
Hoist winch	1		3.560	2.330	1.450	9,700	-	
Luffing winch	1		2.910	2.000	1.330	4,400	-	
Turn table ass'y	1		2.890	2.300	2.625	13,200	-	
Operating cabin & Platform ass'y	1		3.580	2.255	2.500	2,200	-	
Hook block	1		1.130	4.10	2.125	1,500	-	
Counter weight block	10		1.440	0.300	2.650	4,800	48,000	
Counter jib ass'y	1		6.945	2.100	2.100	5,300	-	
Weight bed	1		4.500	0.680	0.690	1,300	-	
Ballast lever	1		6.135	2.350	0.815	3,300	-	
Connection bar	2		10.135	0.125	0.250	400	800	
Tie bar element	2000L	1		2.250	0.084	0.200	135	-
	6300L	4		6.550	0.084	0.200	250	1,000
	3750L	1		4.000	0.084	0.200	160	-
	1290L	1		1.540	0.084	0.200	75	-
	4000L	1		4.250	0.084	0.200	170	-
	3200L	1		3.450	0.084	0.200	140	-
	1300L	1		1.550	0.084	0.200	75	-
Luffing block	1		1.390	0.570	0.900	410	-	



## 08. Packing list

ED580L-24





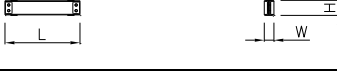


### Climbing equipment

Description	Q'ty	Sketch	Dimension(m)			Weight (kg,±5%)	
			L	W	H	Unit	Total
Climbing cage ass'y	1		12.000	3.700	3.205	15,200	-

### Mast

6m Mast section	10		6.000	2.290	2.310	6,500	65,000
Foundation anchor	1		2.250	2.450	2.470	2,480	-

### Internal climbing equipment

Climbing section ass'y	Lower Section	1		6.000	2.310	2.328	6,585	-
	Upper Section	1		6.000	2.310	2.328	7,540	-
6m Special Mast		1		6.000	2.290	2.310	7,500	-
Collar frame		6		3.100	0.812	0.990	2,250	13,440
Connection beam		6		1.575	0.202	0.320	150	900
Ladder		2		5.880	0.120	0.320	500	1,000
		6		4.780	0.120	0.320	420	2,520

max. Mast height 510.2m

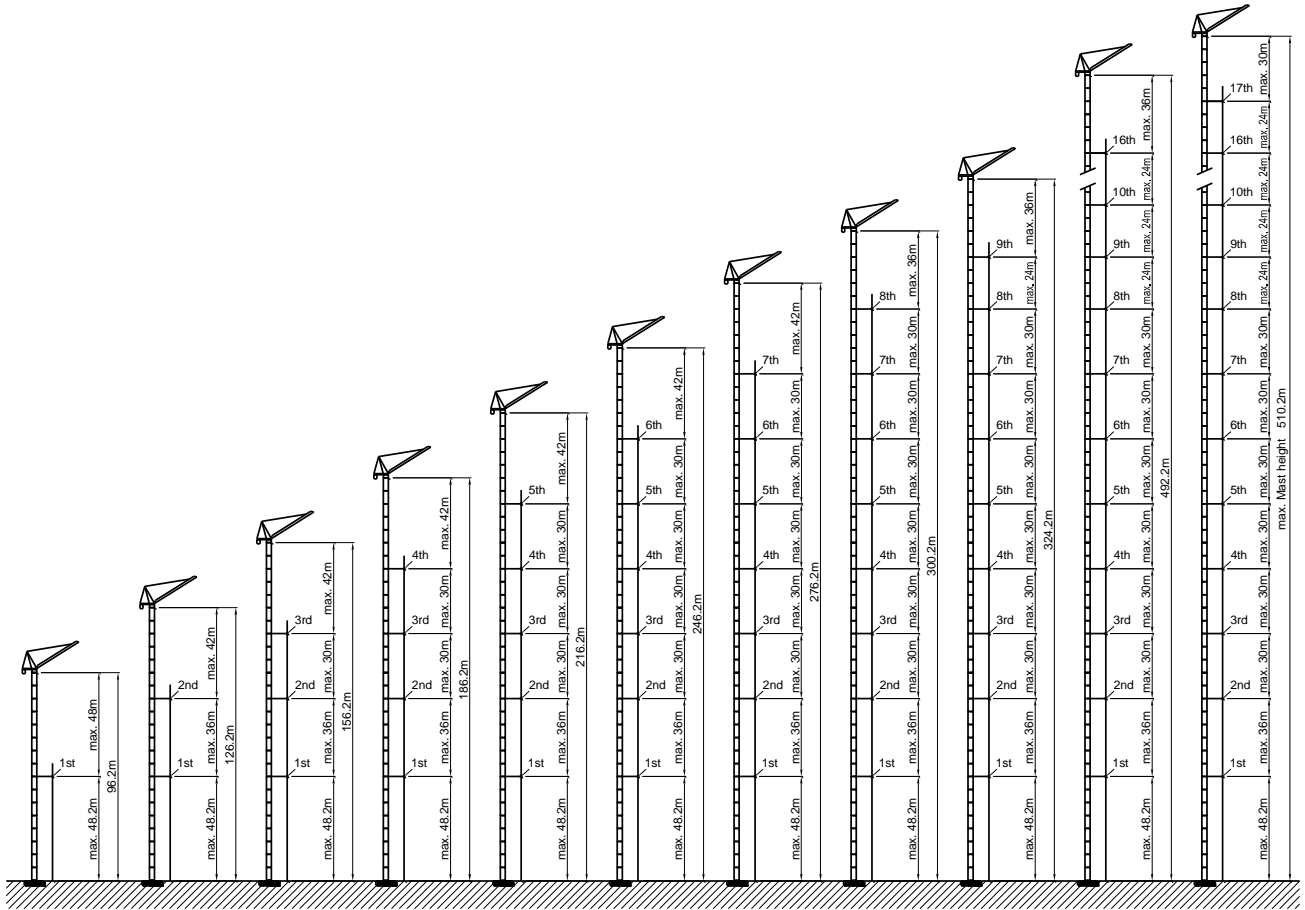


Fig.88

※ NOTES 상기 타워크레인 제원 및 사양은 사전통보 없이 변경 될 수 있음.