

Build the future

www.everdigm.com

EVERDIGM

Tower crane

ED740L-32

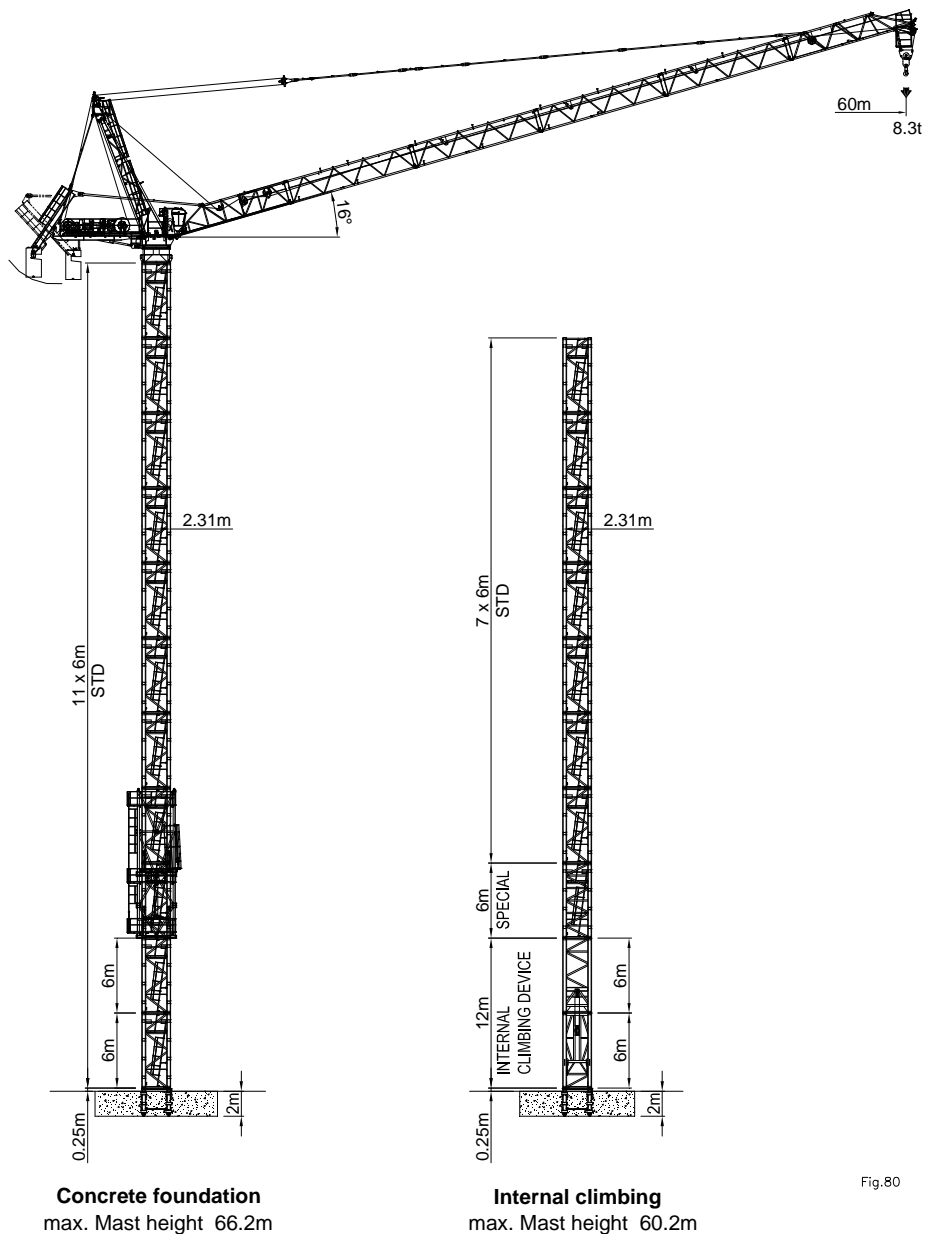


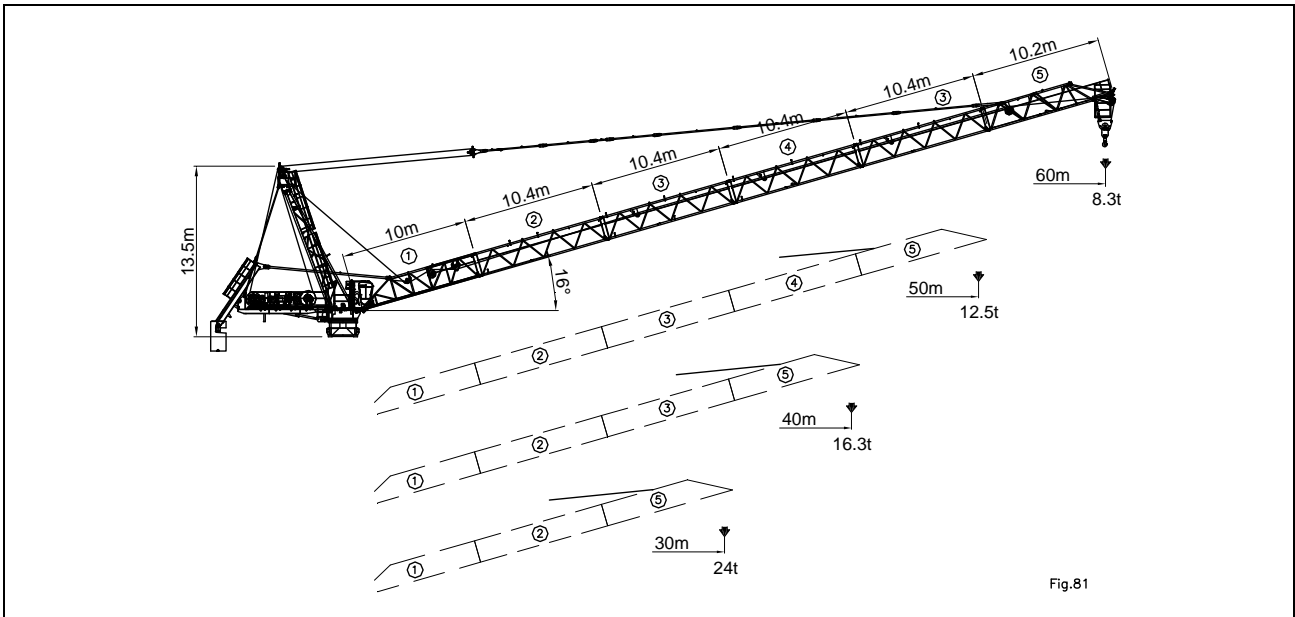
Fig.80



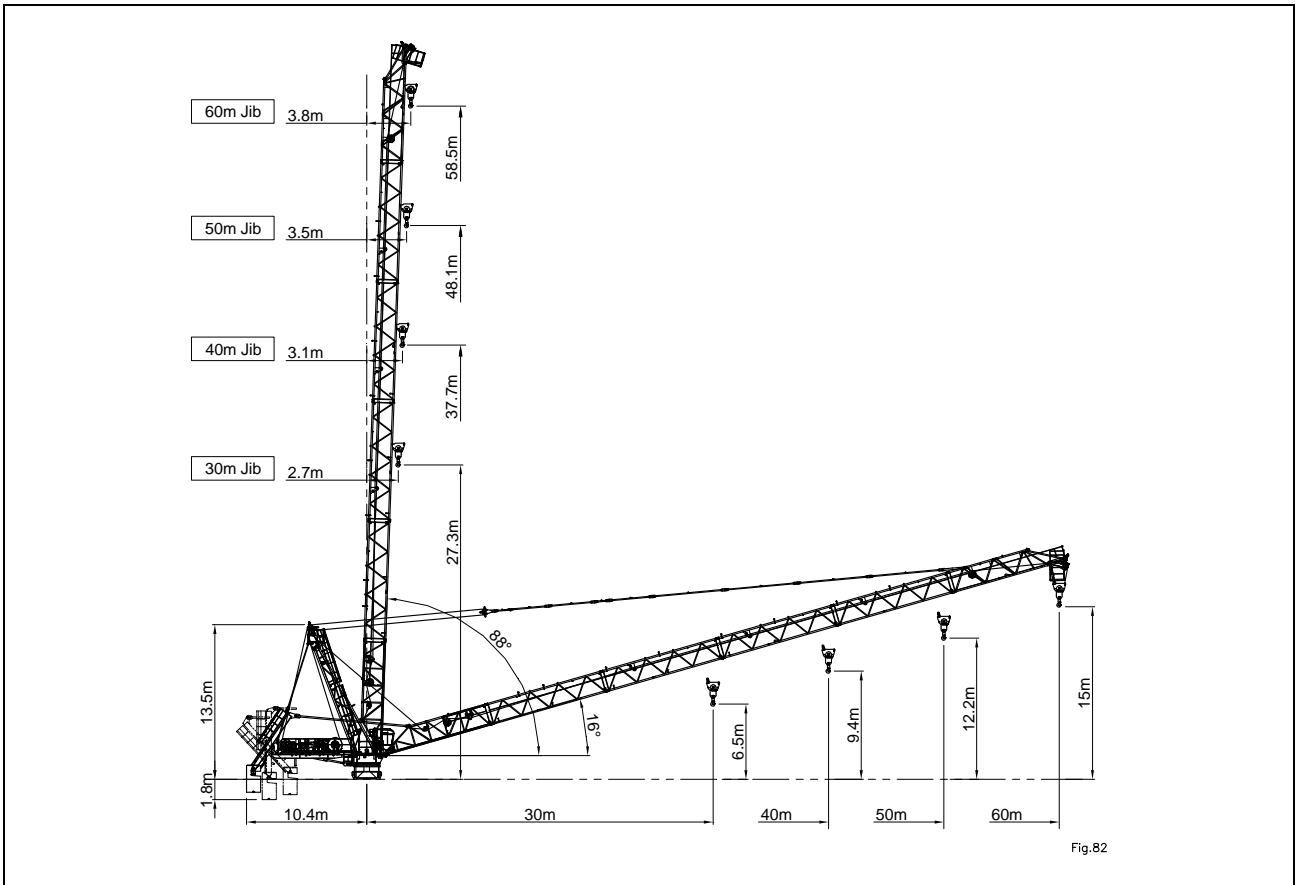
- FEM 1.001 A3
- 건설기계 안전기준에 관한 규칙

01. Jib combination

ED740L-32



02. Radius and hoisting height



03. Mast height

ED740L-32

n \ JIB	Concrete foundation			Internal climbing			for 60m Jib
	30m / 40m	50m	60m	30m	40m / 50m	60m	
13	78.2						
12	72.2	72.2					
11	66.2	66.2	66.2				
10	60.2	60.2	60.2	72.2			
9	54.2	54.2	54.2	66.2	66.2		
8	48.2	48.2	48.2	60.2	60.2	60.2	
7	42.2	42.2	42.2	54.2	54.2	54.2	
6	36.2	36.2	36.2	48.2	48.2	48.2	
5	30.2	30.2	30.2	42.2	42.2	42.2	
4	24.2	24.2	24.2	36.2	36.2	36.2	
3	18.2	18.2	18.2	30.2	30.2	30.2	
2	12.2	12.2	12.2	24.2	24.2	24.2	
1	6.2	6.2	6.2	18.2	18.2	18.2	
0	0.2	0.2	0.2	12.2	12.2	12.2	
6m Mast	m			m			
FEM 1.001	9.8m x 9.8m			9.2m x 9.2m			
건설기계 안전기준에 관한 규칙	10.2m x 10.2m			10.2m x 10.2m			

04. Radius and capacity

Jib length m	Max capacity (m/kg)		Radius & Hoisting capacity									
			m/kg	22	25	30	35	40	45	50	55	60
60	4.1 - 35.0 16,000	3.8 - 35.0 16,000	2 fall	16,000	16,000	16,000	16,000	13,500	11,667	10,200	9,000	8,000
			1 fall	16,000	16,000	16,000	16,000	13,800	11,967	10,500	9,300	8,300
50	3.8 - 41.0 16,000	3.5 - 29.0 24,000	2 fall	24,000	24,000	23,200	19,271	16,325	14,033	12,200		
			1 fall	16,000	16,000	16,000	16,000	16,000	14,333	12,500		
40	3.4 - 40.0 16,000	3.1 - 23.0 32,000	2 fall	32,000	29,432	23,593	19,423	16,300				
			1 fall	16,000	16,000	16,000	16,000	16,000				
30	3.0 - 30.0 16,000	2.7 - 22.0 32,000	2 fall	32,000	29,100	24,000						
			1 fall	16,000	16,000	16,000						

05. Driving performance

ED740L-32

Hoist winch 147kW - 147HF680 - AC- Stepless



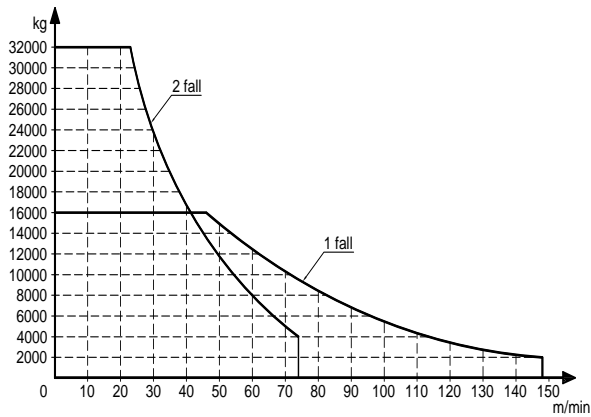
1 Part 2,000kg 0 ~ 148m/min

Line 16,000kg 0 ~ 46m/min



2 Part 4,000kg 0 ~ 74m/min

Line 32,000kg 0 ~ 23m/min



Electrical information

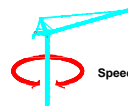
Power supply 3ph x 380V, 50/60Hz (Standard)
3ph x 415V, 50/60Hz (Option)

Control circuit 24Vdc

Power consumption 280kVA

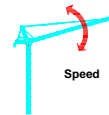
Power cable PNCT x 95SQ x 4Core

Slewing machinery 2Drive units -AC- Stepless



2 x 8.6kW – AC
0 – 0.71rpm

Luffing winch 92kW - AC - Stepless



92kW – AC
1min 40s ~ 2min 43s

Hoist wire rope - Standard 400m

Necessary wire length according to mast height

$$W = (H \times P) + (R \times P) + R + 46$$

- W (Wire length)
- H (Mast height)
- P (Part line) = 1 or 2
- R (Jib length)

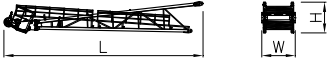






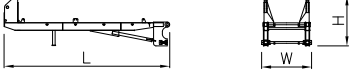


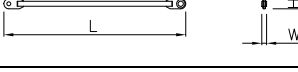
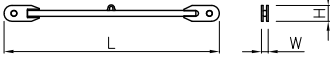

06. Packing list | continued |

Upper part

Description	Q'ty	Sketch	Dimension(m)			Weight (kg,±5%)	
			L	W	H	Unit	Total
No.1	1		10.210	2.300	1.960	3,400	-
No.2	1		10.560	1.910	1.980	1,390	-
Jib-single element	No.3	2	10.560	1.910	1.980	1,490	2,980
	No.4	1	10.560	1.910	1.980	1,510	-
No.5	1		10.490	1.910	2.510	2,790	-

07. Packing list I continued I

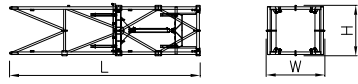
ED740L-32

Description	Q'ty	Sketch	Dimension(m)			Weight (kg,±5%)		
			L	W	H	Unit	Total	
Top tower ass'y	1		12.510	2.110	1.920	6,700	-	
Hoist winch	1		3.560	2.330	1.450	9,800	-	
Luffing winch	1		2.910	2.000	1.330	4,500	-	
Turn table ass'y	1		2.890	2.300	2.625	13,200	-	
Operating cabin & Platform ass'y	1		3.580	2.255	2.500	2,200	-	
Hook block	1		1.130	4.10	2.125	1,500	-	
Counter weight block	10		1.220	0.300	2.560	6,000	60,000	
Counter jib ass'y	1		6.945	2.100	2.100	5,300	-	
Weight bed	1		4.500	0.680	0.690	1,300	-	
Ballast lever	1		6.135	2.350	0.815	3,300	-	
Connection bar	2		10.135	0.125	0.250	400	800	
Tie bar element	2000L	1		2.250	0.084	0.200	135	-
	6300L	4		6.550	0.084	0.200	250	1,000
	3750L	1		4.000	0.084	0.200	160	-
	1290L	1		1.540	0.084	0.200	75	-
	4000L	1		4.250	0.084	0.200	170	-
	3200L	1		3.450	0.084	0.200	140	-
	1300L	1		1.550	0.084	0.200	75	-
Luffing block	1		1.390	0.570	0.900	410	-	



08. Packing list

ED740L-32








Climbing equipment

Description	Q'ty	Sketch	Dimension(m)			Weight (kg,±5%)	
			L	W	H	Unit	Total
Climbing cage ass'y	1		12.000	3.700	3.205	15,200	-

Mast

6m Mast section	10		6.000	2.290	2.310	6,500	65,000
Foundation anchor	1		2.250	2.450	2.470	2,480	-

Internal climbing equipment

Climbing section ass'y	Lower Section	1		6.000	2.310	2.328	8,810	-
	Upper Section	1		6.000	2.310	2.328	9,760	-
6m Special Mast		1		6.000	2.290	2.310	7,500	-
Collar frame		6		3.100	0.812	0.990	2,250	13,440
Connection beam		6		1.575	0.202	0.320	150	900
Ladder		2		5.880	0.120	0.320	500	1,000
		6		4.780	0.120	0.320	420	2,520

max. Mast height 510.2m

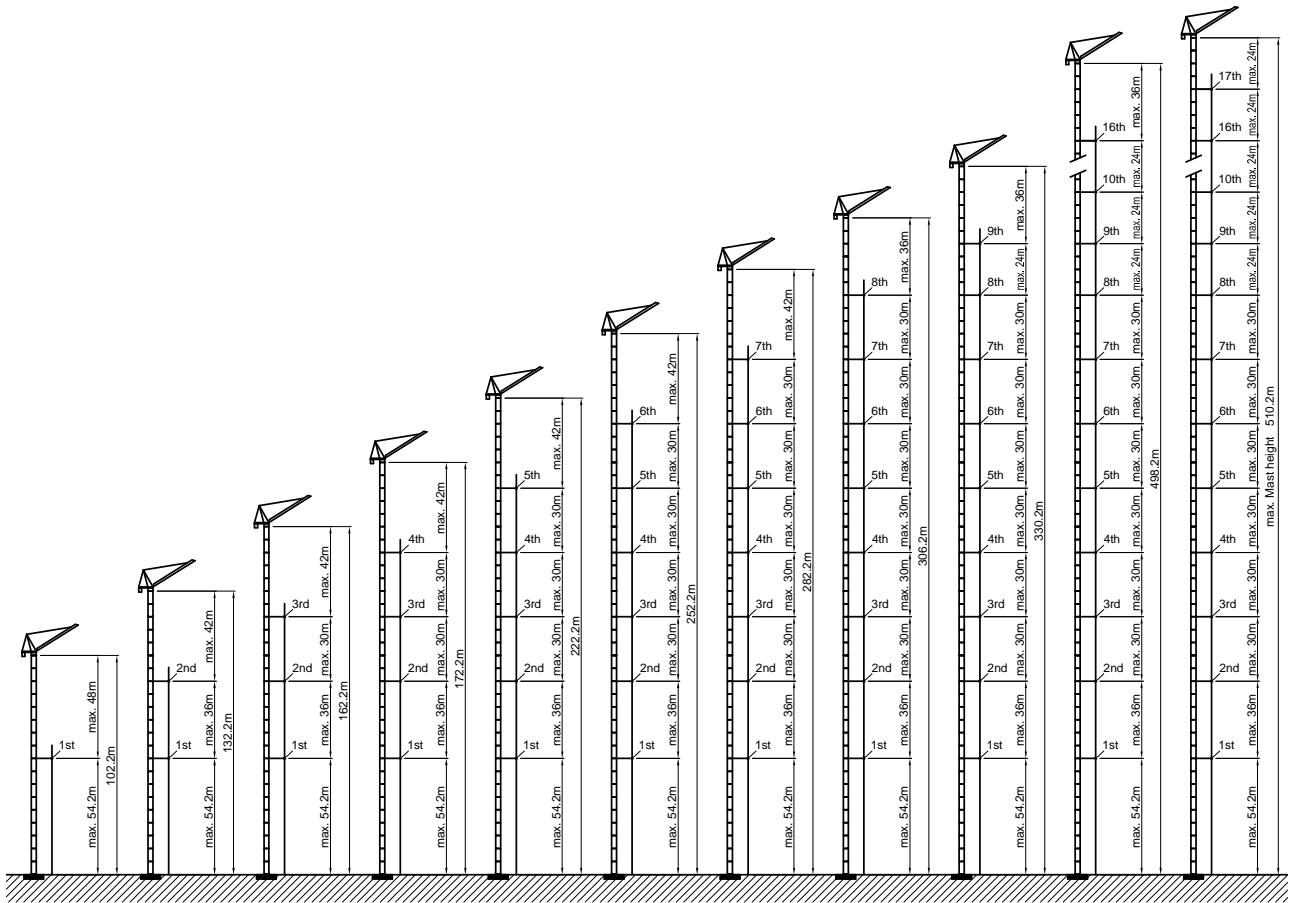


Fig.85

* Specifications contained in the catalogue may be changed without prior notice for improvement of quality and performance