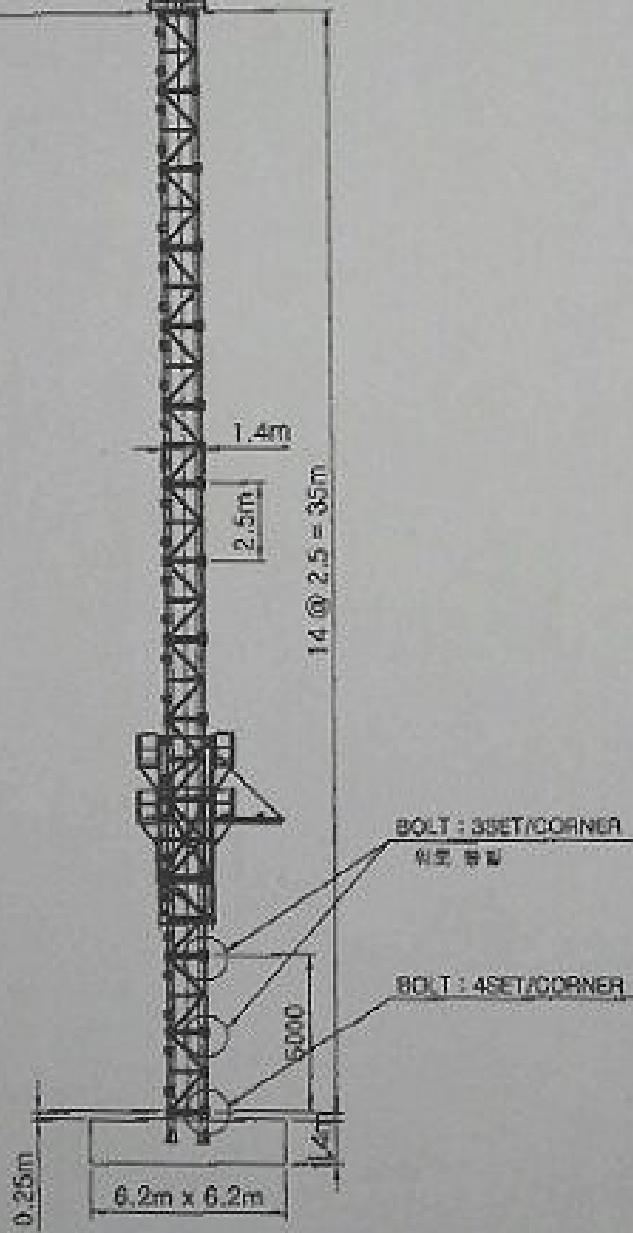
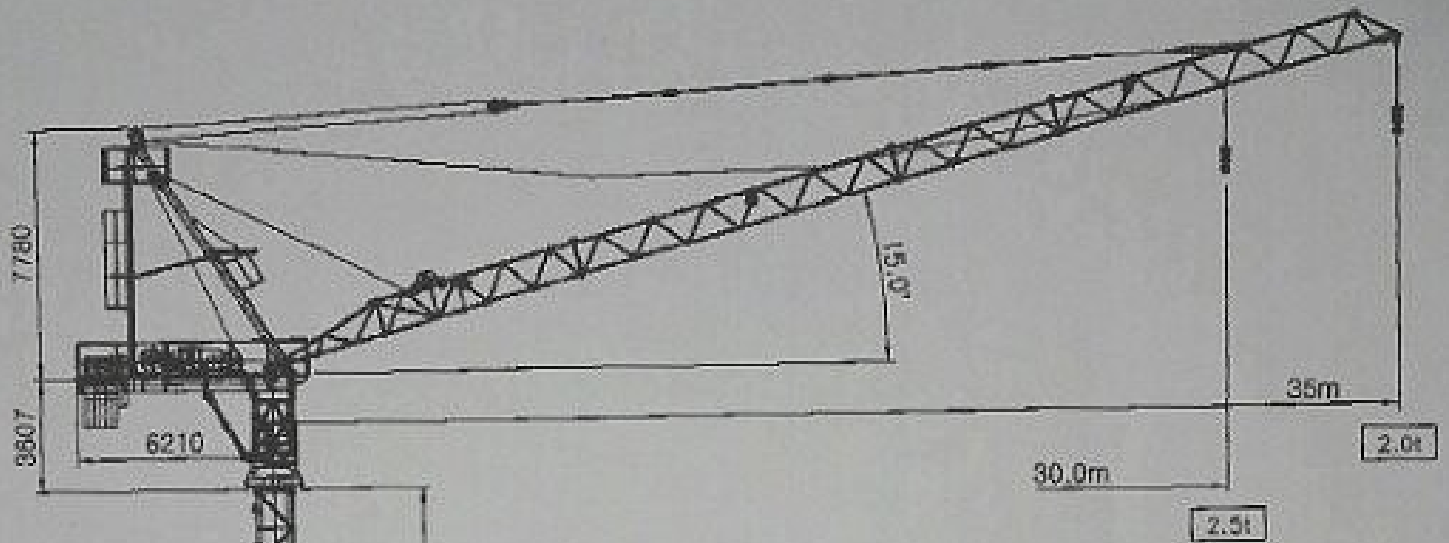


LUFFING CRANE FT-100LU

2-FALL



최대 100m 이하 (전체 설치높이)

최소 필타이 설치위치 최소 20m ~ 최대 27.75m	공간부 분 wall 부 간격 15m ~ 25m	mast overhang max. 25m (2.5m @ 10ea)
-----------------------------------	------------------------------	---