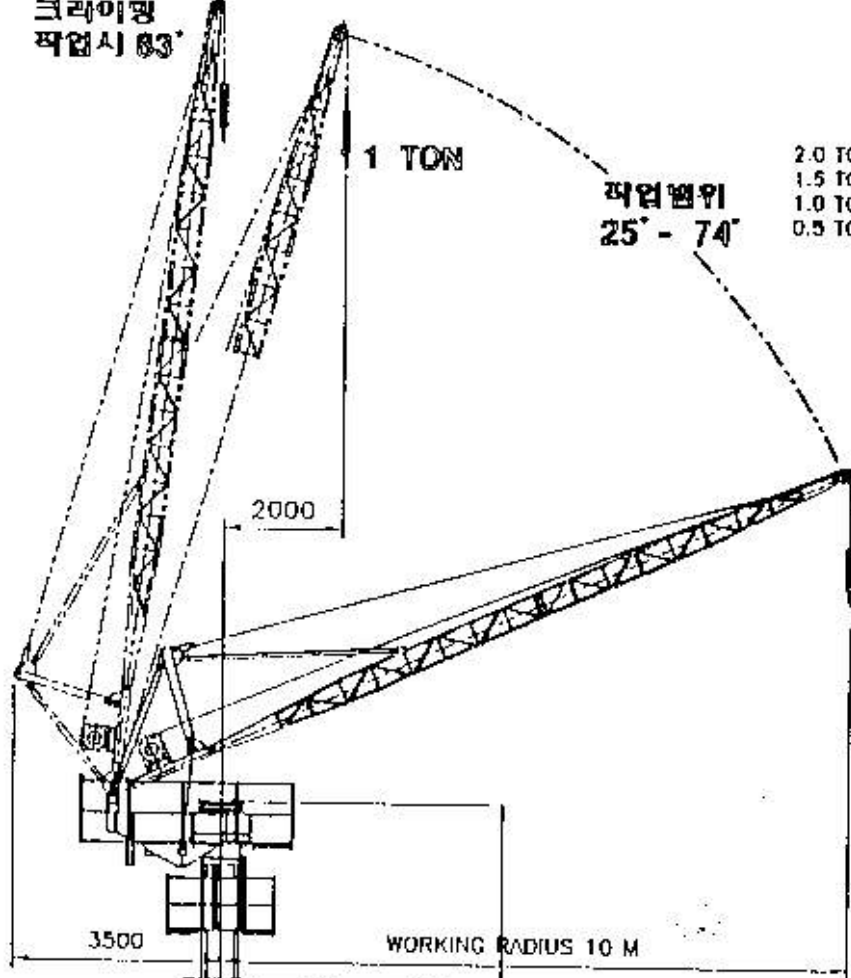


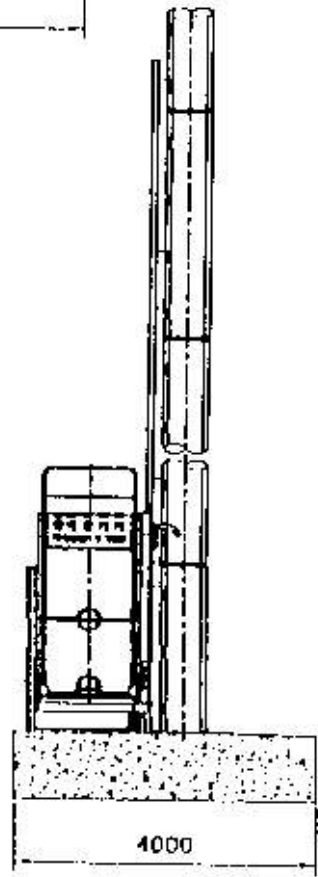
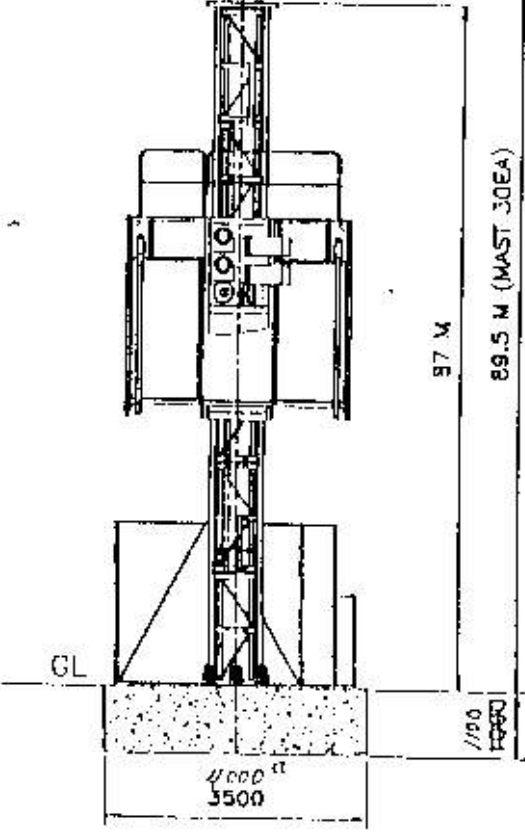
# DJC - 1212 COMBI CRANE

크라이징  
작업시 83°

중격하중표



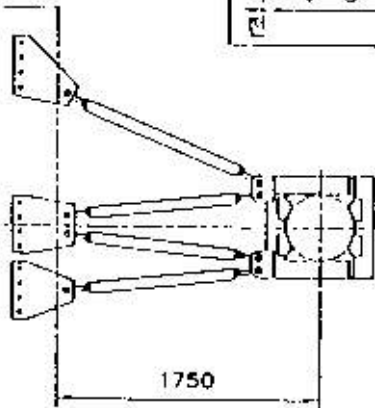
2.0 TON									
1.5 TON									
1.0 TON									
0.5 TON									
	0	2		5					10M



2 3

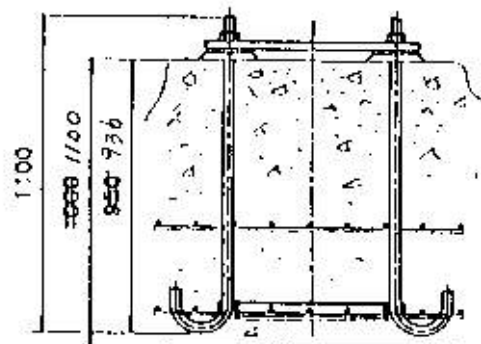
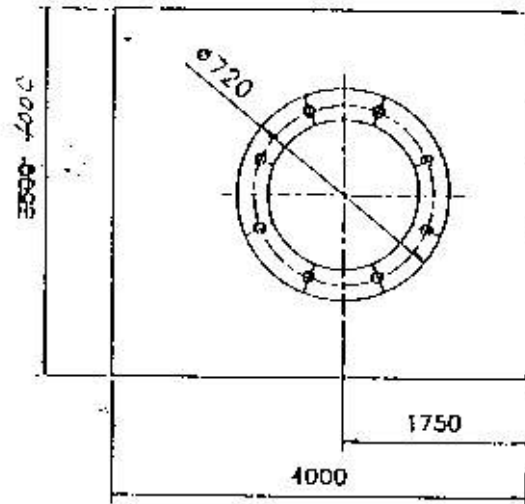
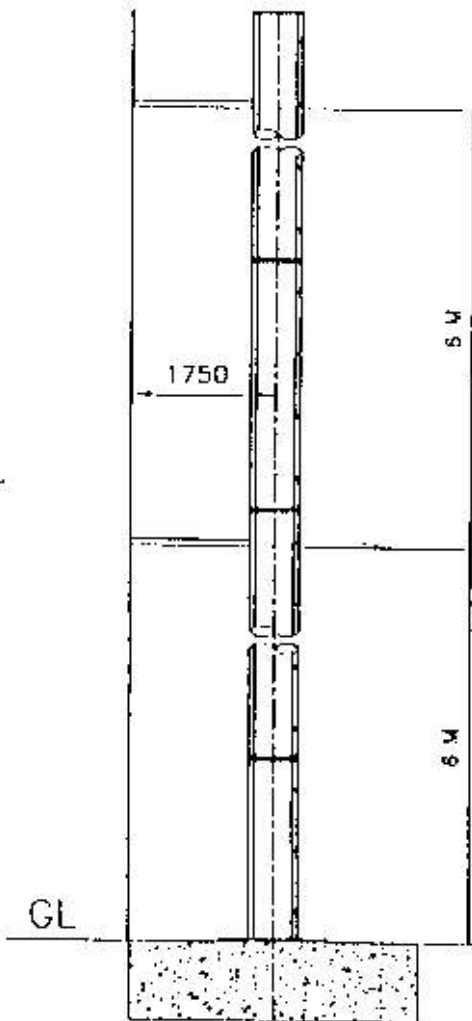
■ LIFT 사양

항목	형식
하계함규격	3000 x 2500 x 1350
하계함자중	1280KG
최대적재용량	1000 KG
승강속도	37.91 M/MIN
구동방식	RACK & PINION GEAR
구동모터	9.75 KW x 2
최대양정	87 M
전원	380V 3상 60HZ



■ CRANE 사양

항목	형식
장력하중	1 TON
작업반경	10 M
최대양정	100 M
권상속도	20 M/MIN
권상출력	9.75 KW
기복속도	48° / MIN
기복출력	3.7 KW
선회속도	0.48 R.P.M
선회출력	0.75 KW
승강방식	유압식
승강속도	1.3 M/MIN
미스트길이	φ457 x 3M / PCS
미스트용량	610 KG
안전장치	과부하방지, 과권방지, 기복제한, 선회제한, 낙하방지
전원	380V 3상 60HZ
용도	다형골조, 다형건축물



# DJC - 1212 JIB CRANE

크레인  
작업시 83°

1 TON

작업범위  
25° - 74°

2000

1 TON

3500

WORKING RADIUS 10 M

89.5 M (MAST JOEA)

2015

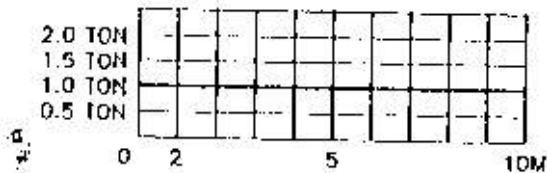
2100

1100

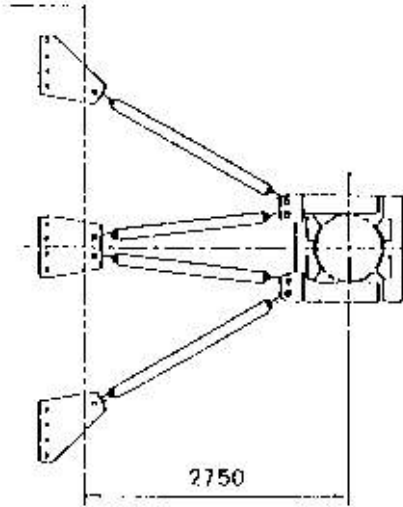
GL

4000  
3500

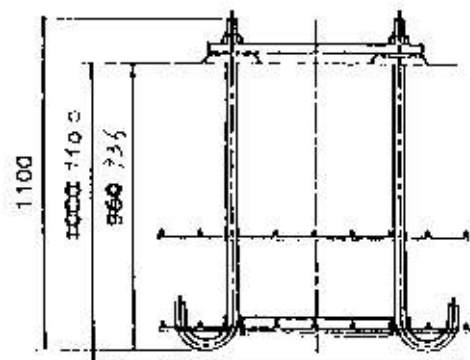
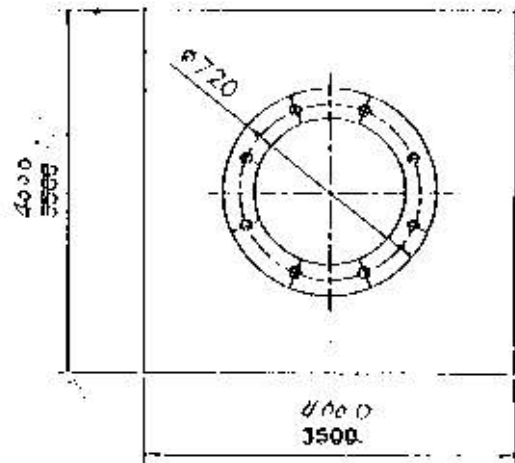
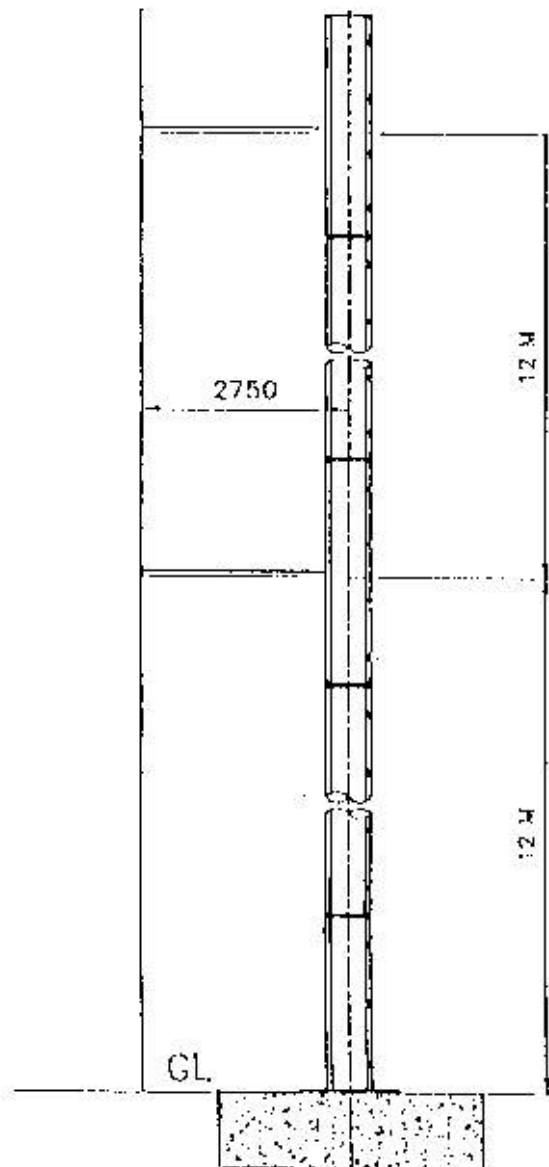
정격하중표



# 사양



장	타	량	1 TON
작업반경			10 M
외지름			100 H
관상속도			20 M/MIN
관상출력			9.75 KW
기보속도			18' / MIN
기보출력			3.7 KW
선회속도			0.18 R.P.M
선회출력			0.75 KW
유정방식			유입식
유정속도			1.3 M/MIN
마스크길이			φ457 x 3M / PCS
마스크중량			610 KG
안전장치			과부하방지장치, 과전방지장치 기체제한장치, 신화제한장치 낙하방지장치
전원			380V 3상 60HZ
비고			대형골조, 대형건물





# DAIJUNG JIB CRANE

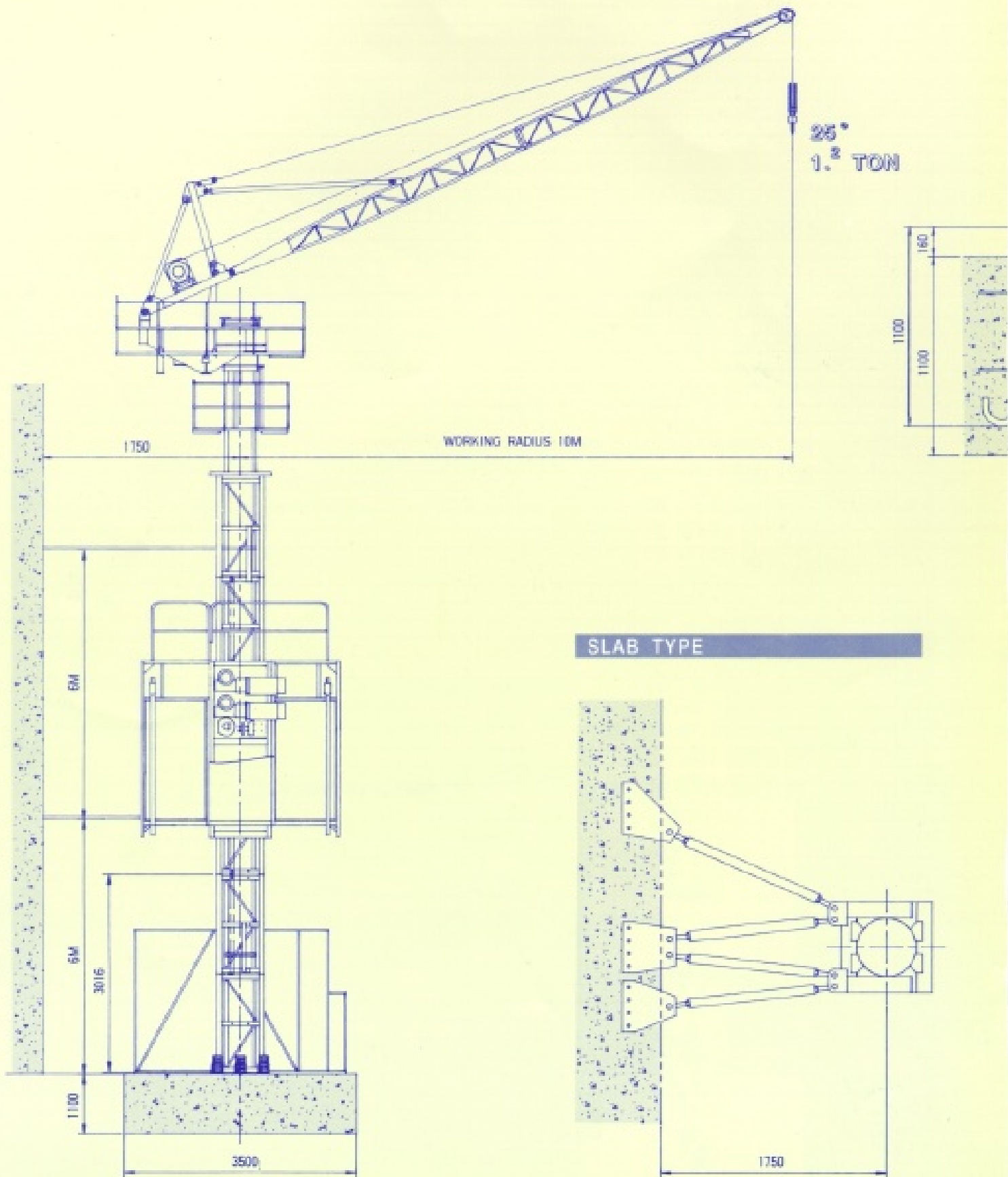


*combi*  
**DJC 1212**

DAIJUNG MACHINERY & INDUSTRY CO., LTD.

# DJC 1212combi

FOUNDATI

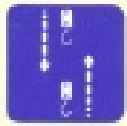




MAX. HEIGHT  
90M



WORKING RADIUS  
10M



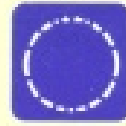
HOISTING  
20M/MIN.



LOADING CAPACITY  
1 TON

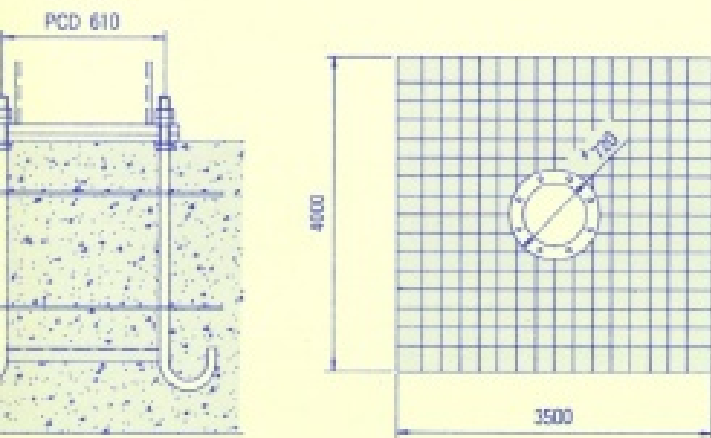


LUFFING  
48°/MIN



SLEWING  
0.4 R.P.M

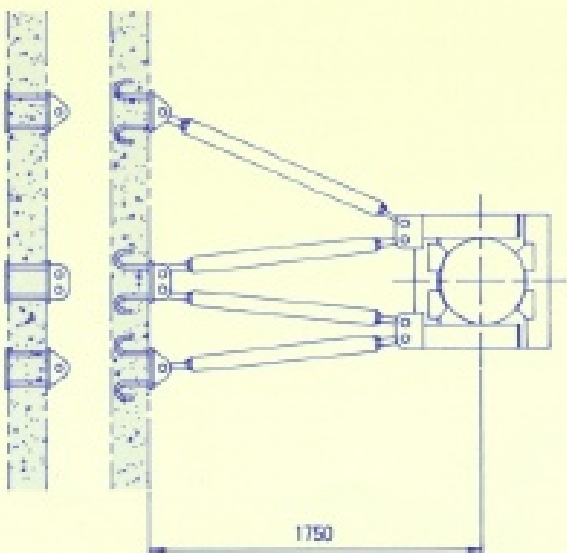
ION



### CRANE SPECIFICATION

DESCRIPTION		SPECIFICATION
LOADING CAPACITY		1.2 TON
WORKING RADIUS		10 M
MAX. HEIGHT		90 M
POWER	HOISTING	9.5 Kw
	LUFFING	3.7 Kw(HYD. TYPE)
	SLEWING	0.5 Kw
SPEED	HOISTING	20 M/MIN
	LUFFING	48 °/MIN
	SLEWING	0.4 R.P.M
MAST	WEIGHT	610 Kg
	DIMENSION	φ457 × 3,000 L/EA
POWER SOURCE		380V · 3PH · 60Hz
CLIMBING METHOD		HYDRAULIC TYPE
SAFETY SYSTEM		<ul style="list-style-type: none"> <li>• OVER LOAD LIMIT S/W</li> <li>• HOOK OVER RUNNING LIMIT S/W</li> <li>• UP-DOWN LUFFING LIMIT S/W</li> <li>• SLEWING LIMIT S/W</li> <li>• GOVERNOR</li> </ul>

### WALL TYPE



### LIFT SPECIFICATION

DESCRIPTION		SPECIFICATION
CAR	DIMENSION	3,000 × 2,500 × 1,350 mm
CAR	WEIGHT	1,280 Kg
PAYLOAD CAPACITY		1,000 Kg
WORKING SPEED		40 M/MIN
DRIVING SYSTEM		RACK & PINION GEAR TYPE
MOTOR		9.5 Kw × 2 EA
MAX. HEIGHT		150 M
POWER SOURCE		380V · 3PH · 60 Hz

### LOADING TABLE

	8'3"	7'4"					25'
2.0 TON							
1.5 TON							
1.0 TON							
0.5 TON							
	0	2	5				10M

# DJC 1212combi

DESCRIPTION		Q'TY	WEIGHT
BODY	SLEWING FRAME	1	
	GUIDE MAST	1	
	SLEWING GEAR	1	
	HYD. POWER UNIT	1	
	CONTROL PANEL	1	
	HOISTING WINCH SET	1	
	GANTRY FRONT	1	
	GANTRY REAR	1	
	HOISTING WIRE ROPE('10)	180M	
	SUB TOTAL		3,266Kg
J I B (BOOM)	LOWER BOOM	1	
	TOP BOOM	1	
	BACK STAY	1	
	PENDANT WIRE('24)	1	
	HOOK BLOCK(2'')	1	
	SUB TOTAL		733Kg
CLIMBING UNIT	HYD. CYLINDER & TOP-BOTTOM BLOCK	1	140Kg
MAST	MAST('457x3M)	1	610Kg
	LOWER MAST('457x2.1M)	1	425Kg
	LADDER	1	50Kg
LIFT	CARGO BOX	1	1,280Kg
CAR	GUIDE RAIL	127	5,130Kg

\* Specifications contained herein are subject to change without notice