

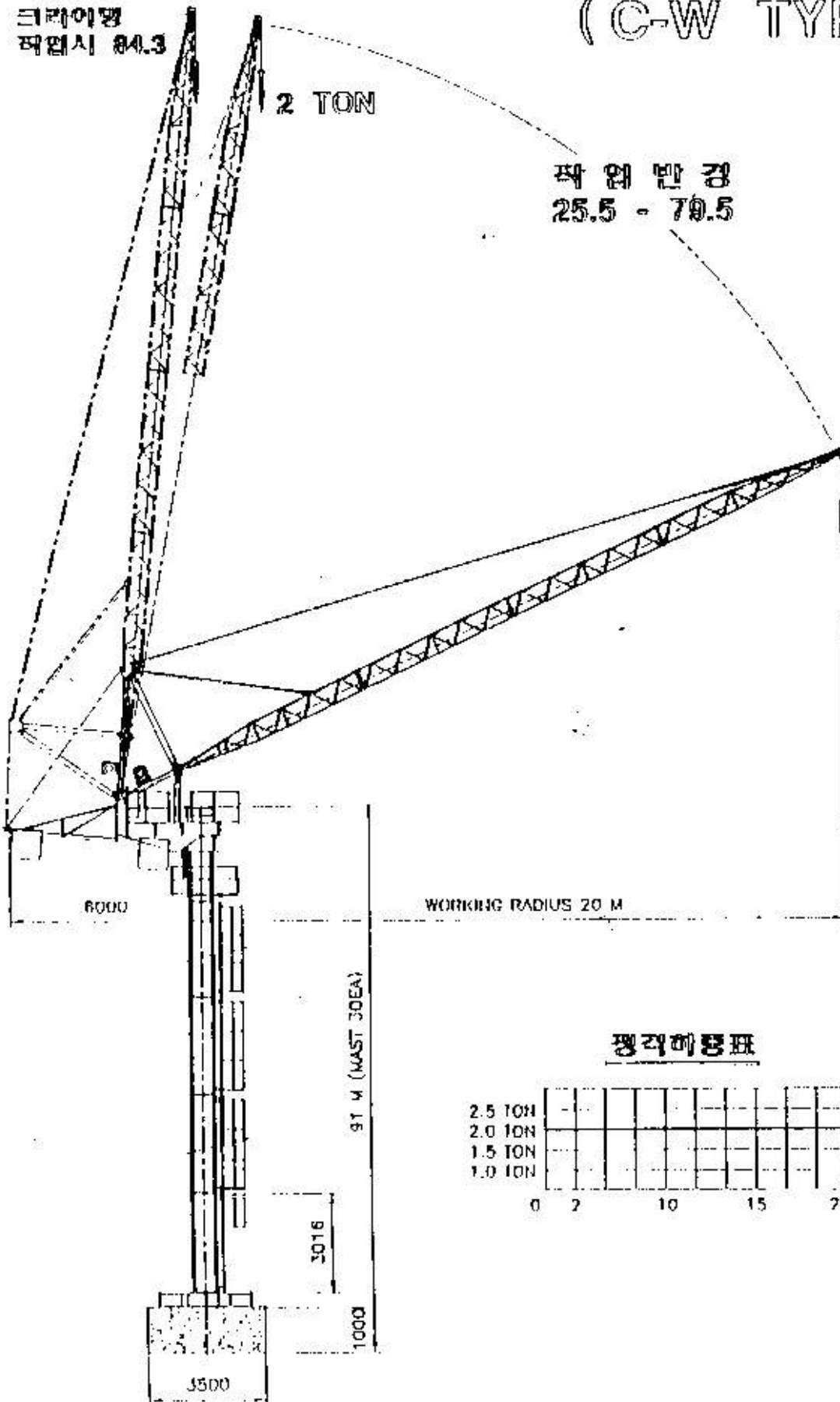
DJC - 2020 JIB CRANE (C-W TYPE)

크레인
적용시 84.3

2 TON

작업 반경
25.5 - 70.5

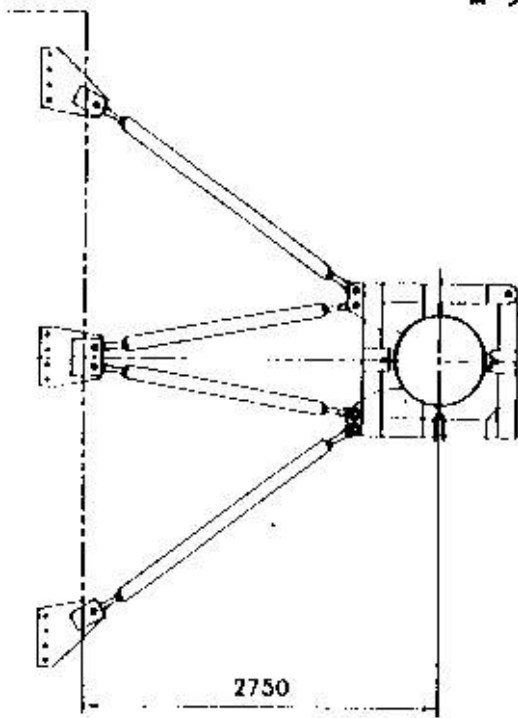
2 TON



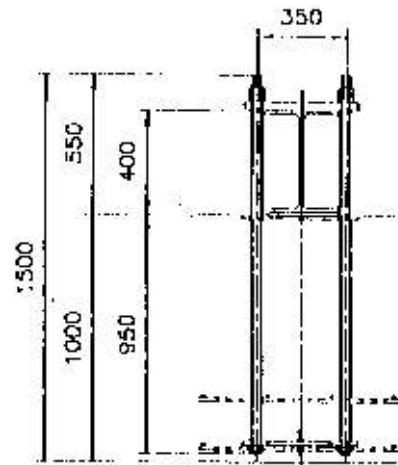
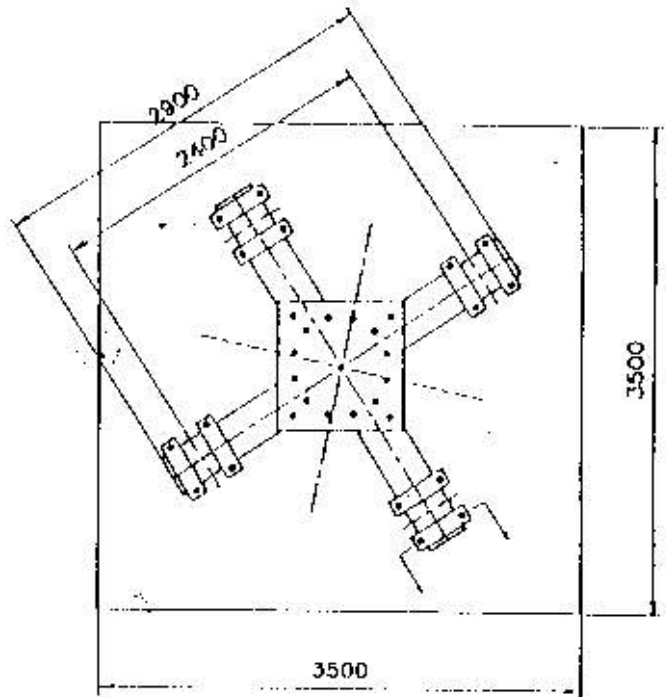
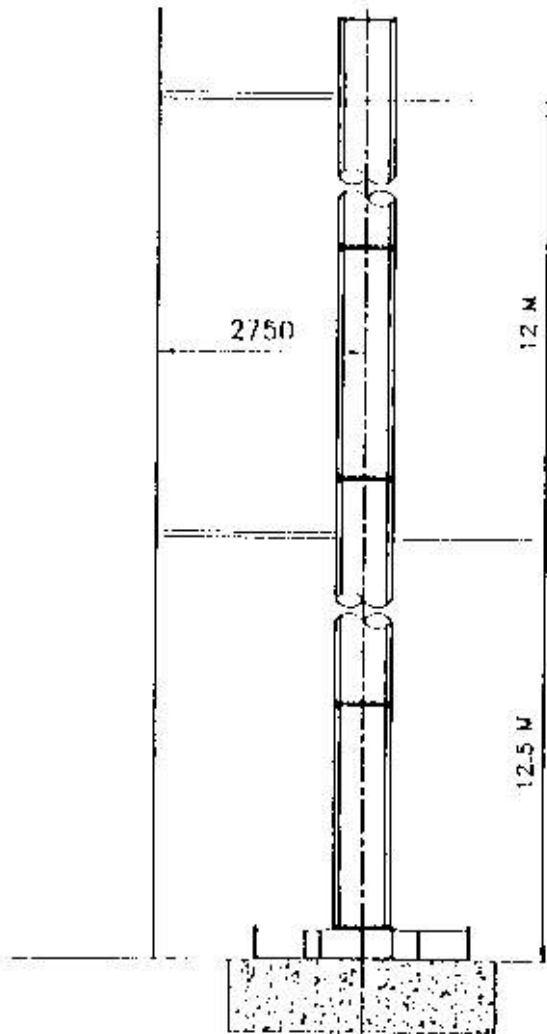
성능표

| | | | | | | | | | |
|---------|---|---|----|----|-----|---|---|---|---|
| 2.5 TON | - | - | - | - | - | - | - | - | - |
| 2.0 TON | - | - | - | - | - | - | - | - | - |
| 1.5 TON | - | - | - | - | - | - | - | - | - |
| 1.0 TON | - | - | - | - | - | - | - | - | - |
| | 0 | 2 | 10 | 15 | 20M | | | | |

■ 사 양



| 항목 | 단위 | 수량 | 비고 |
|-------|---------|--|----|
| 정적 하중 | TON | 2 | |
| 하중 반경 | M | 20 | |
| 외장 직경 | M | 110 | |
| 권선 속도 | M / MIN | 20 | |
| 권선 출력 | KW | 9.75 | |
| 기동 속도 | ° / MIN | 48 | |
| 기동 출력 | KW | 3.75 | |
| 선회 속도 | R.P.M | 0.1 | |
| 선회 출력 | KW | 3.75 | |
| 송김 방식 | | 유압식 | |
| 송김 속도 | M/MIN | 13 | |
| 대크립 이 | | Ø609 x 3M / PCS | |
| 대크립 량 | | 900 KG | |
| 안전 장치 | | 외부비행장치, 외관방지장치 기체제한장치, 선파제한장치 낙하방지장치 | |
| 전원 | | 380V 3상 60HZ | |
| 용도 | | 대형골조, 대형전구물 | |





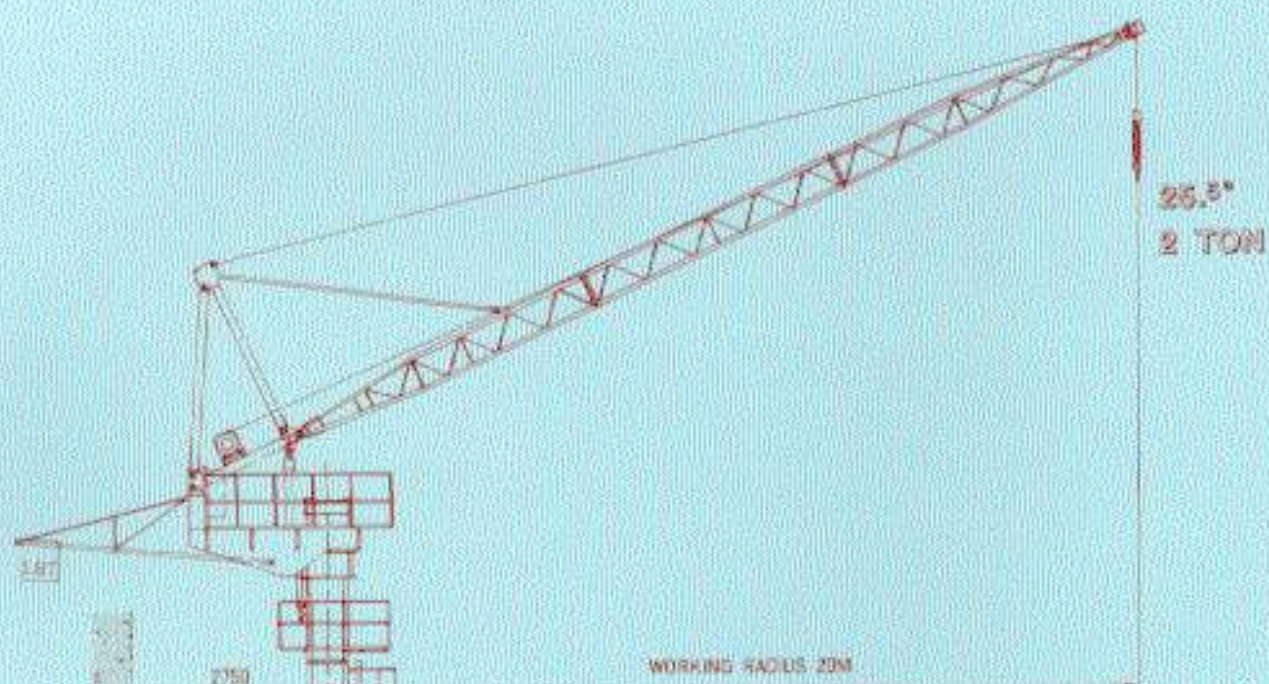
DAIJUNG JIB CRANE



^{CW}
DJJC 2020

DAIJUNG MACHINERY & INDUSTRY CO., LTD.

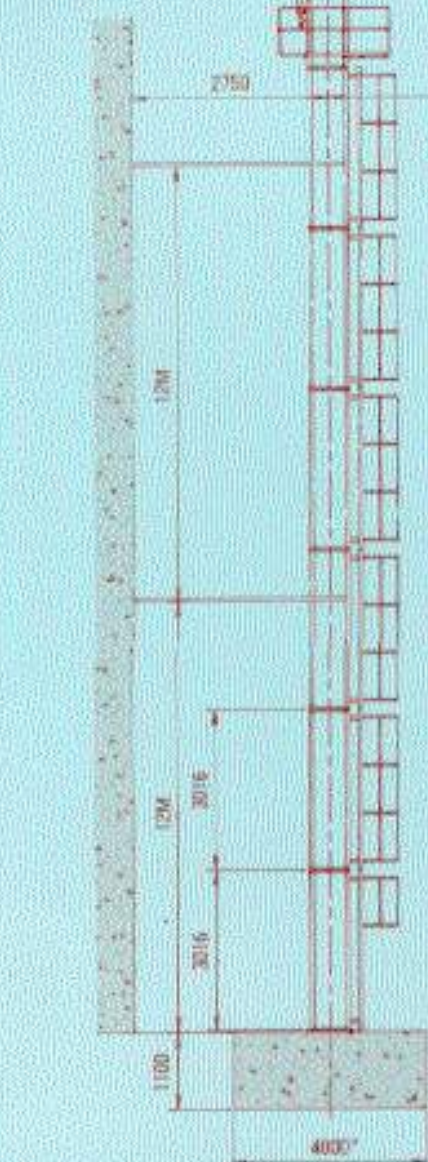
DJC 2020CW



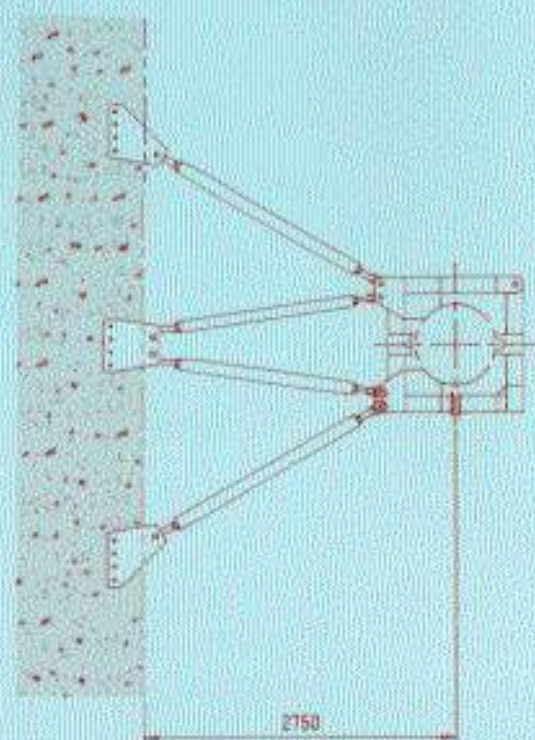
LO

BA.3 79

| | |
|---------|---|
| 2.5 TON | □ |
| 2.0 TON | □ |
| 1.5 TON | □ |
| 1.0 TON | □ |
| 0 | □ |
| 2 | □ |



SLAB TYPE





MAX. HEIGHT
110M



WORKING RADIUS
20M



HOISTING
20M/MIN



LOADING CAPACITY
2TON



LUFFING
48°/MIN

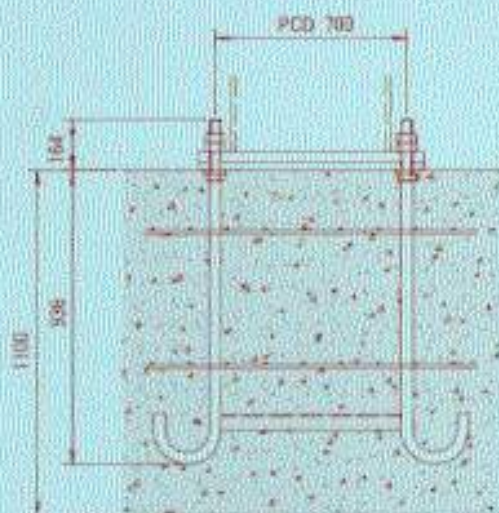
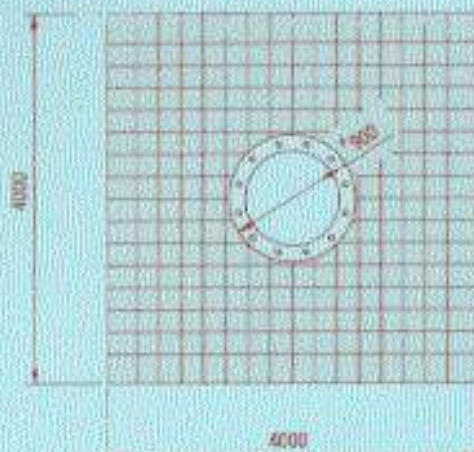


SLEWING
0.1°/MIN

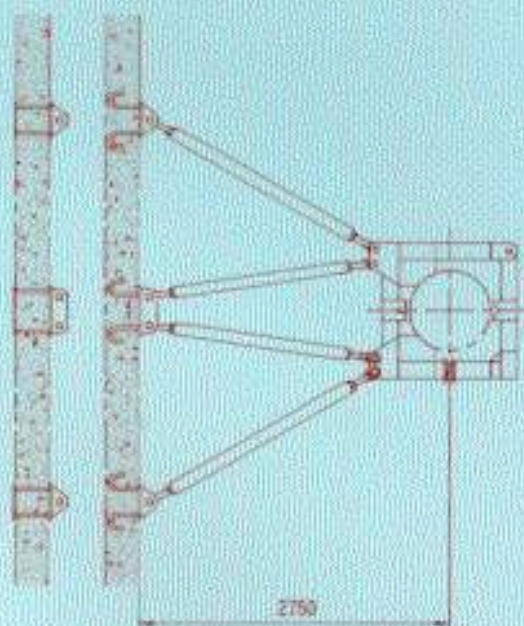
LOADING TABLE

| | | |
|------|----|-----|
| 7 | 10 | 15M |
| 25.5 | | |

FOUNDATION



WALL TYPE



CRANE SPECIFICATION

| DESCRIPTION | | SPECIFICATION |
|------------------|-----------|--|
| LOADING CAPACITY | | 2 TON |
| WORKING RADIUS | | 20 M |
| MAX. HEIGHT | | 110 M |
| POWER | HOISTING | 2.7 Kw |
| | LUFFING | 3.7 Kw (HYD. TYPE) |
| | SLEWING | 0.7 Kw |
| SPEED | HOISTING | 20 M/MIN |
| | LUFFING | 48 °/MIN |
| | SLEWING | 0.1 °/MIN |
| MAST | WEIGHT | 960 Kg |
| | DIMENSION | *809 x 3000 L/EA |
| POWER SOURCE | | 380V 3PH 60Hz |
| CLIMBING METHOD | | HYDRAULIC TYPE |
| SAFETY SYSTEM | | <ul style="list-style-type: none"> • OVER LOAD LIMIT S/W • HOOK OVER RUNNING LIMIT S/W • UP-DOWN LUFFING LIMIT S/W • SLEWING LIMIT S/W • GOVERNOR |

DJC 2020CW

| | DESCRIPTION | Q'TY | WEIGHT |
|-------------------|-------------------------------------|------|---------|
| BODY | SLEWING FRAME | 1 | |
| | GUIDE MAST | 1 | |
| | LADDER | 1 | |
| | SLEWING GEAR | 1 | |
| | GUIDE RAIL | 1 | |
| | CONTROL PANEL | 1 | |
| | HYD. CYLINDER | 2 | |
| | HOISTING WINCH SET | 1 | |
| | GANTRY FRONT | 1 | |
| | GANTRY REAR | 1 | |
| | HOISTING WIRE ROPE('10) | 200M | |
| | SUB TOTAL | | 4,735Kg |
| J I B (BOOM) | LOWER BOOM | 2 | |
| | CENTER BOOM | 2 | |
| | TOP BOOM | 1 | |
| | BACK STAY | 1 | |
| | PENDANT WIRE('24) | 1 | |
| | HOOK BLOCK(2**) | 1 | |
| | SUB TOTAL | | 1,340Kg |
| CLIMBING UNIT | HYD. CYLINDER & TOP-BOTTOM BLOCK | 1 | 190Kg |
| MAST | STD. MAST('609x3M) | 1 | 960Kg |
| COUNTER WEIGHT | WEIGHT FRAME | 1 | 300Kg |

* Specifications contained herein are subject to change without notice

DAJUNG MACHINERY & INDUSTRY CO., LTD.

HEAD OFFICE

#115-1, Nonhyun-Dong, Kangnam-ku, Seoul, Korea
TEL:(02)548 ~ 6511 FAX:(02)543 ~ 9756

FACTORY

#60-9, Shinun-Ri, Youngin-Myon, Asan-Si, Chungnam
TEL:(0418)44 ~ 6101 FAX:(0418)44 ~ 6106



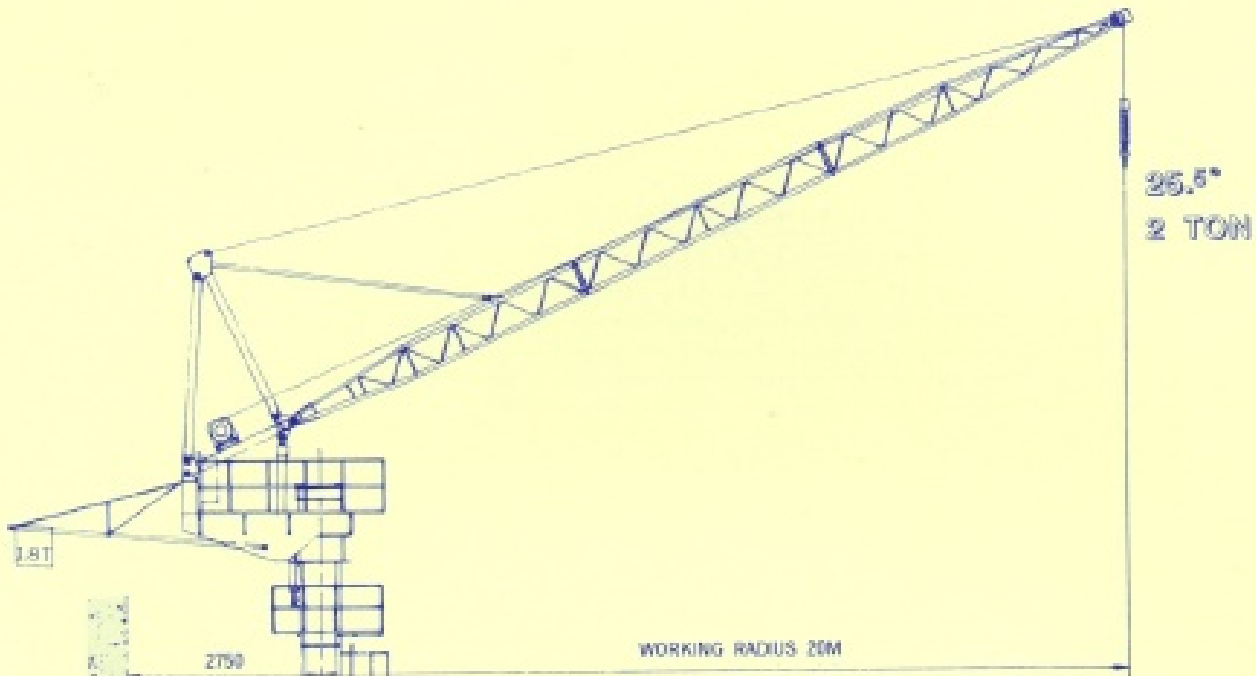
DAIJUNG JIB CRANE



DJJC 2020 ^{CW}

DAIJUNG MACHINERY & INDUSTRY CO., LTD.

DJC 2020CW

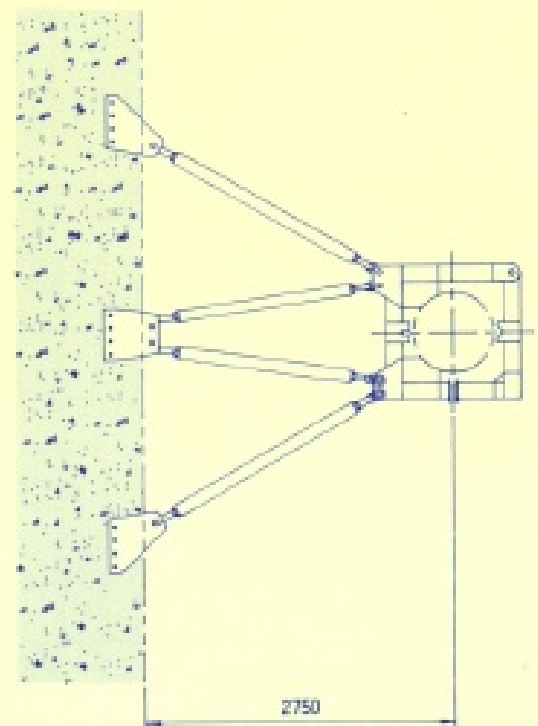
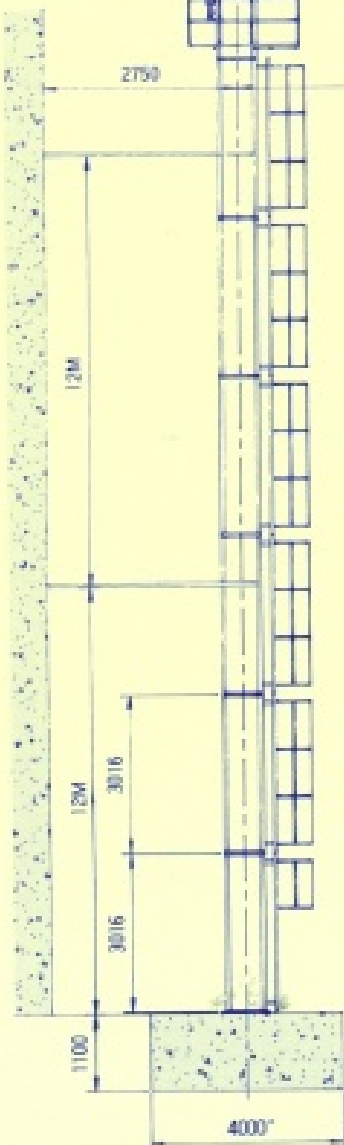


LOA

84.3 79.

| | |
|---------|-----|
| 2.5 TON | |
| 2.0 TON | |
| 1.5 TON | |
| 1.0 TON | |
| | 0 2 |

SLAB TYPE

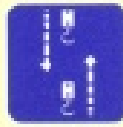




MAX. HEIGHT
110M



WORKING RADIUS
20M



HOISTING
20M/MIN.



LOADING CAPACITY
2TON

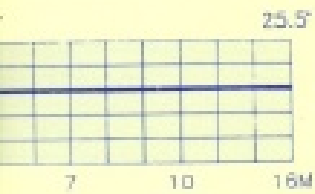


LUFFING
48°/MIN

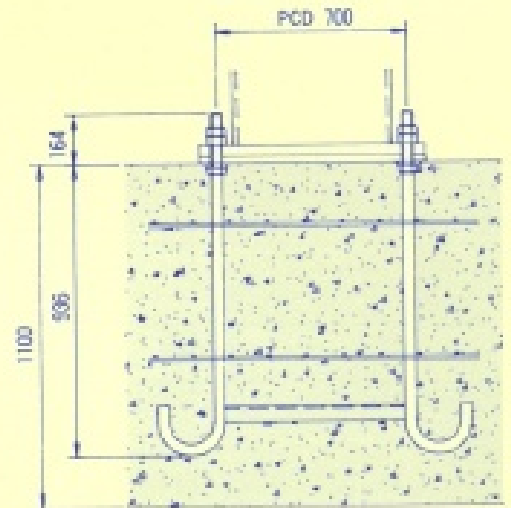
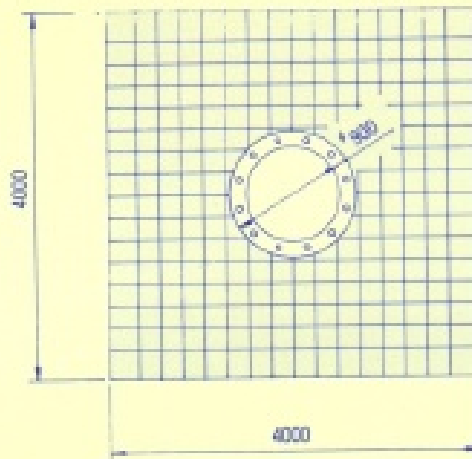


SLEWING
0.1°/R.P.M

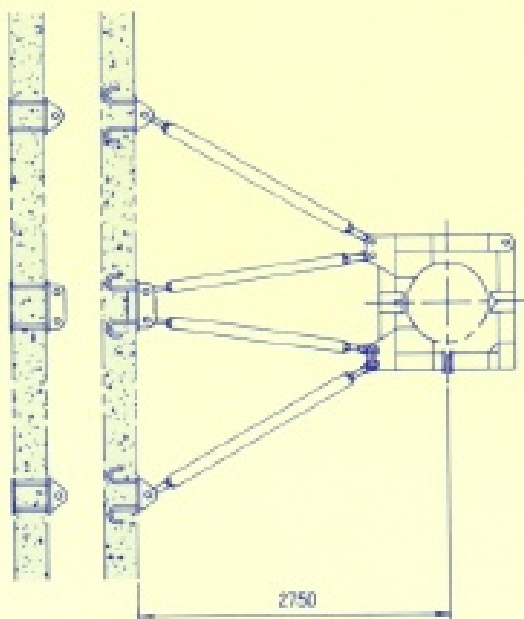
LOADING TABLE



FOUNDATION



WALL TYPE



CRANE SPECIFICATION

| DESCRIPTION | | SPECIFICATION |
|------------------|-----------|--|
| LOADING CAPACITY | | 2 TON |
| WORKING RADIUS | | 20 M |
| MAX. HEIGHT | | 110 M |
| POWER | HOISTING | 9.7 Kw |
| | LUFFING | 3.7 Kw (HYD. TYPE) |
| | SLEWING | 0.7 Kw |
| SPEED | HOISTING | 20 M / MIN. |
| | LUFFING | 48 ° / MIN. |
| | SLEWING | 0.1° R.P.M |
| MAST | WEIGHT | 960 Kg |
| | DIMENSION | 1609 × 3,000 L / EA |
| POWER SOURCES | | 380V · 3PH · 60Hz |
| CLIMBING METHOD | | HYDRAULIC TYPE |
| SAFETY SYSTEM | | <ul style="list-style-type: none"> • OVER LOAD LIMIT S/W • HOOK OVER RUNNING LIMIT S/W • UP-DOWN LUFFING LIMIT S/W • SLEWING LIMIT S/W |

DJC 2020CW

| | DESCRIPTION | Q'TY | WEIGHT |
|-------------------|-------------------------------------|------|---------|
| BODY | SLEWING FRAME | 1 | |
| | GUIDE MAST | 1 | |
| | LADDER | 1 | |
| | SLEWING GEAR | 1 | |
| | GUIDE RAIL | 1 | |
| | CONTROL PANEL | 1 | |
| | HYD. CYLINDER | 2 | |
| | HOISTING WINCH SET | 1 | |
| | GANTRY FRONT | 1 | |
| | GANTRY REAR | 1 | |
| | HOISTING WIRE ROPE('10) | 200M | |
| | SUB TOTAL | | 4,735Kg |
| J I B (800M) | LOWER BOOM | 2 | |
| | CENTER BOOM | 2 | |
| | TOP BOOM | 1 | |
| | BACK STAY | 1 | |
| | PENDANT WIRE('24) | 1 | |
| | HOOK BLOCK(2") | 1 | |
| | SUB TOTAL | | 1,340Kg |
| CLIMBING UNIT | HYD. CYLINDER & TOP-BOTTOM BLOCK | 1 | 190Kg |
| MAST | STD. MAST('609x3M) | 1 | 960Kg |
| COUNTER WEIGHT | WEIGHT FRAME | 1 | 300Kg |

* Specifications contained herein are subject to change without notice