



KUMKANG CONSTRUCTION EQUIPMENT

KLC2020
LUFFING BOOM CRANE

KLC2020

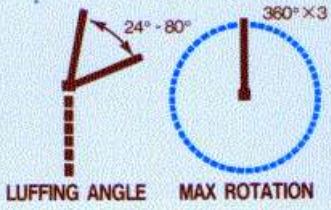
LUFFING BOOM CRANE

H MAX HEIGHT
100 m

S SPEED
12.5/25 m/min

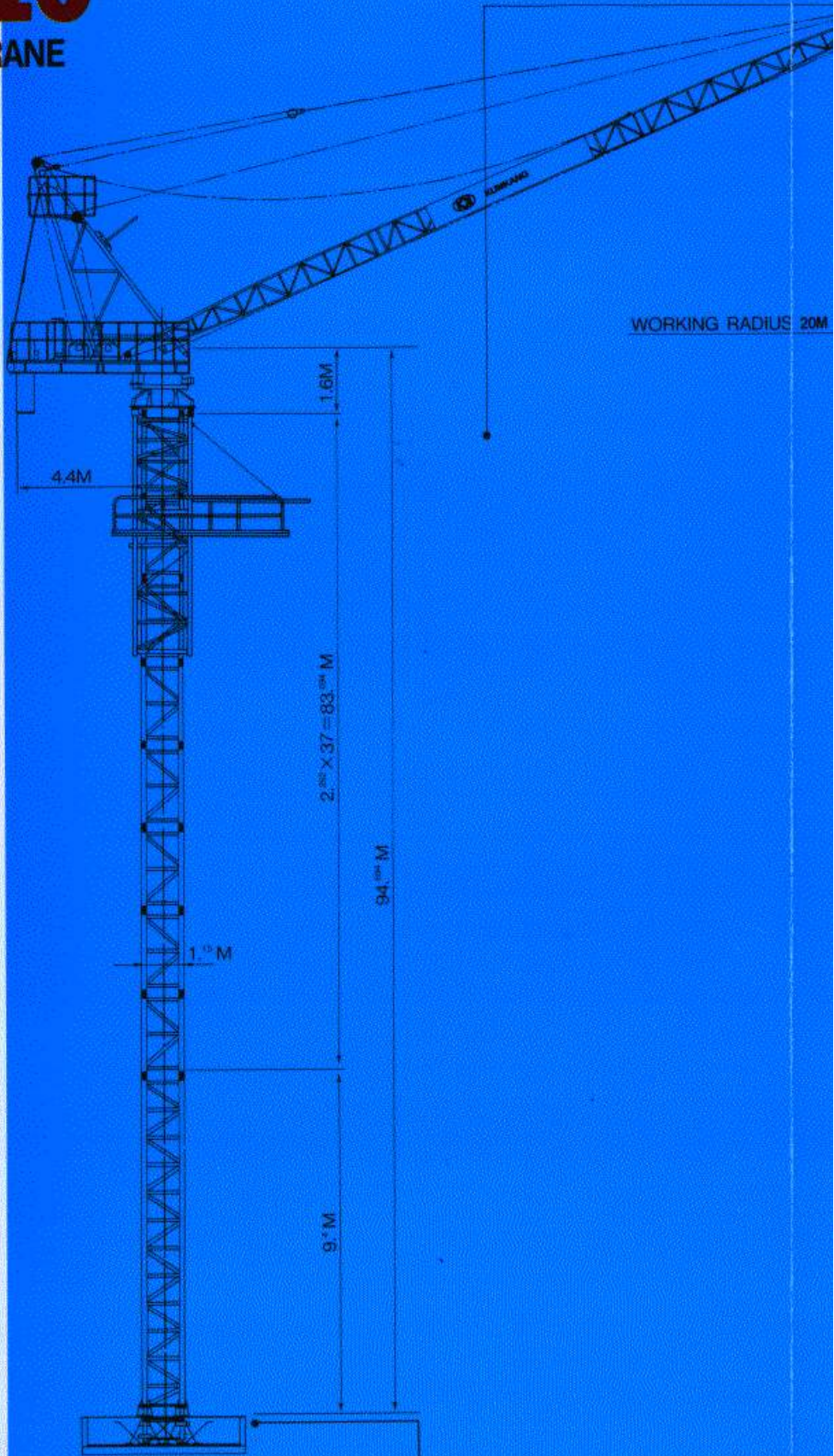
R WORKING RADIUS
20 m

t RATED LOAD
2000 Kg

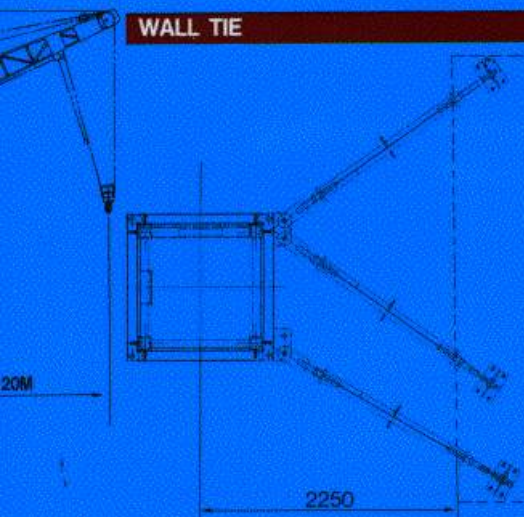


100m

MAX HEIGHT

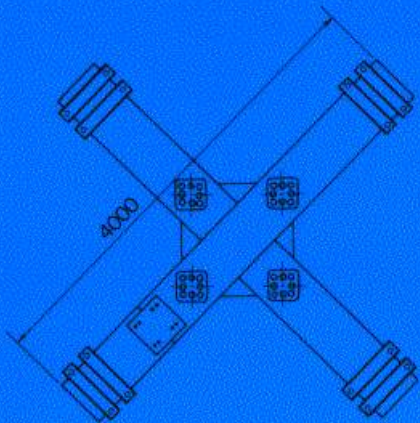
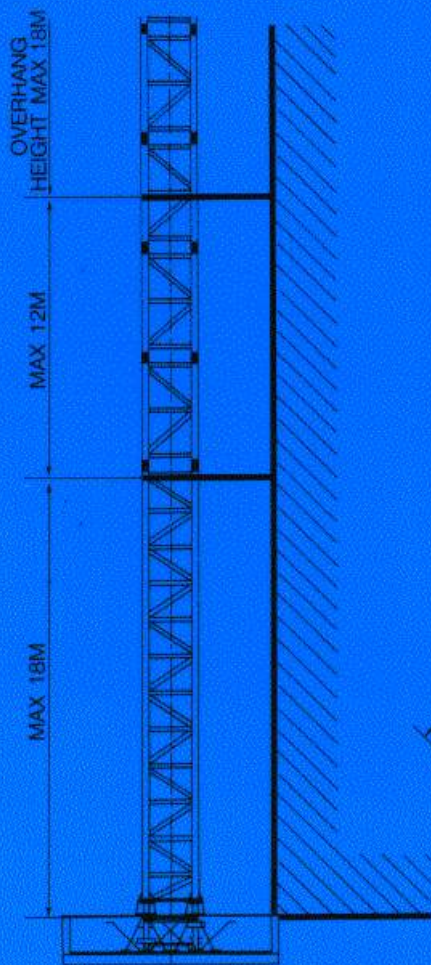


WALL TIE

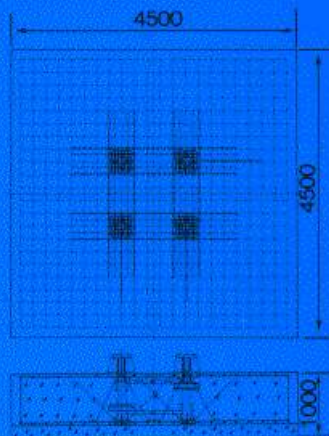


SPEC

DESCRIPTION	SPECIFICATION	
CAPACITY	RATED LOAD	2000KG
	WORKING RADIUS	20M
	FREE STANDING HEIGHT	MAX. 32M(H.U. HOOK)
	MAX. LIFTING HEIGHT	100M(H.U. HOOK)
HOISTING	SPEED	12.5/25M/MIN
	WIRE ROPE DIAMETER	φ12 X 2FALL
	MOTOR POWER	5.5/10KW X 5/4P
LUFFING	BOOM ANGLE RANGE	24°~80°
	SPEED	30° DEGREE/MIN
	WIRE ROPE DIAMETER	φ12 φ20
	MOTOR POWER	4.5KW X 2P
SLEWING	NUMBER OF MAX. ROTATION	360° X 3REV
	SPEED	0.5REV/MIN
	MOTOR POWER	1.5KW X 4P
CLIMBING	METHOD	HYDRAULIC POWER SYSTEM
	SPEED	UP : 0.6M/MIN DOWN : 0.875 M/MIN
	MOTOR POWER	2.2KW X 4P
POWER SOURCE	AC 380V X 3φ 60Hz	
SAFETY DEVICES	<ul style="list-style-type: none"> • OVER LOAD LIMITER • OVER WINDING & REVERSE WINDING CONTROL DEVICE • MAX. HOISTING LIMITER • BOOM LUFFING ANGLELIMITER • SLEWING CONTROL DEVICE • TWIST COMPENSATOR • EMERGENCY STOP SWITCH 	

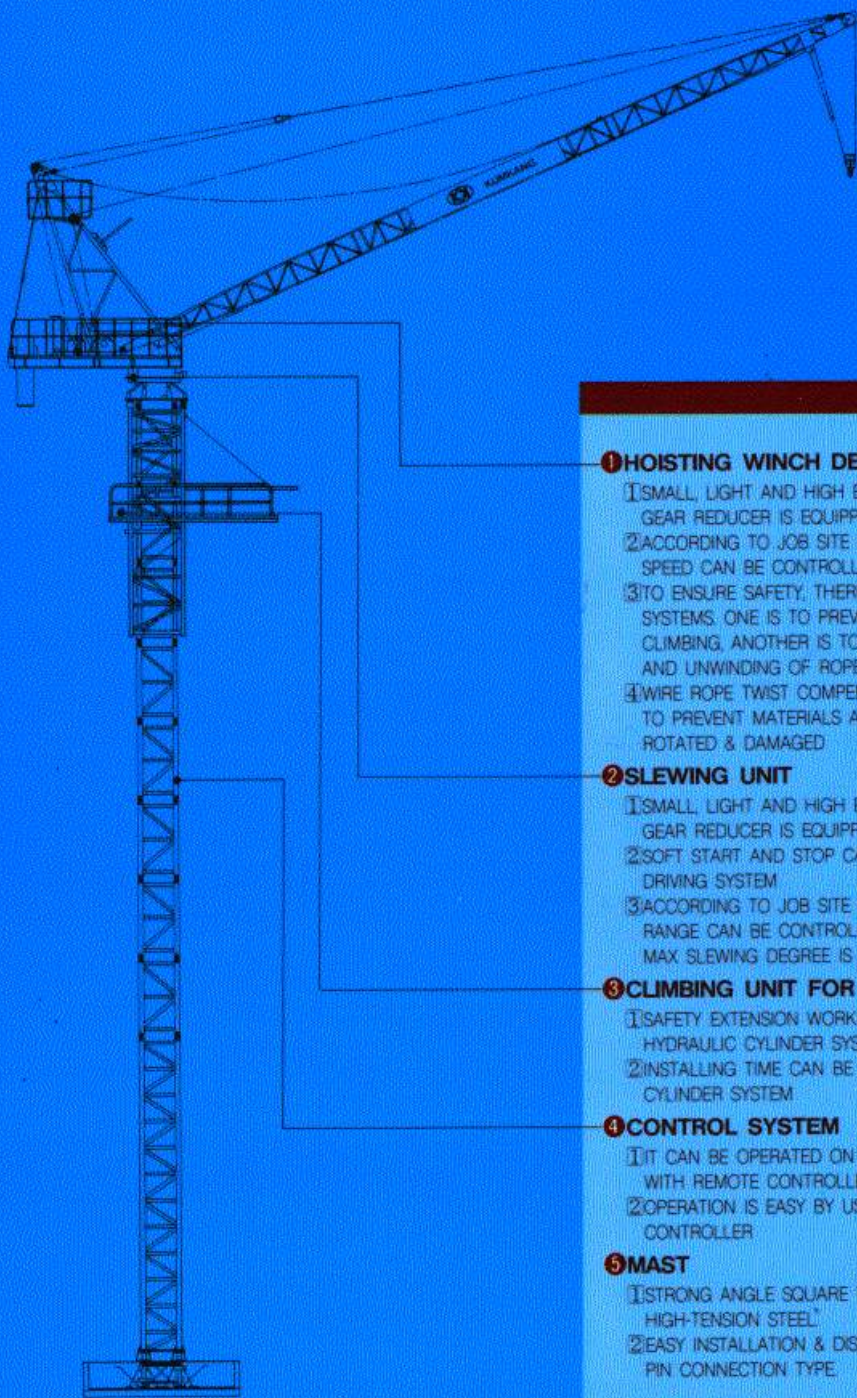


CHASSIS TYPE



STATIC TYPE

FOUNDATION



1 HOISTING WINCH DEVICE

- 1 SMALL, LIGHT AND HIGH EFFICIENT PLANETARY GEAR REDUCER IS EQUIPPED.
- 2 ACCORDING TO JOB SITE CONDITION, SPEED CAN BE CONTROLLED.
- 3 TO ENSURE SAFETY, THERE ARE TWO SAFETY SYSTEMS. ONE IS TO PREVENT HOOK'S OVER CLIMBING, ANOTHER IS TO PREVENT OVER WINDING AND UNWINDING OF ROPE
- 4 WIRE ROPE TWIST COMPENSATOR IS EQUIPPED TO PREVENT MATERIALS AND ROPES FROM BEING ROTATED & DAMAGED

2 SLEWING UNIT

- 1 SMALL, LIGHT AND HIGH EFFICIENT PLANETARY GEAR REDUCER IS EQUIPPED.
- 2 SOFT START AND STOP CAN BE DONE BY REACTOR DRIVING SYSTEM
- 3 ACCORDING TO JOB SITE CONDITION, SLEWING RANGE CAN BE CONTROLLED BY CAM TYPE LIMIT SW. MAX SLEWING DEGREE IS $360^{\circ} \times 3$

3 CLIMBING UNIT FOR EXTENDING MASTS


- 1 SAFETY EXTENSION WORKS CAN BE ENSURED BY HYDRAULIC CYLINDER SYSTEM
- 2 INSTALLING TIME CAN BE SHORTENED BY HYDRAULIC CYLINDER SYSTEM

4 CONTROL SYSTEM

- 1 IT CAN BE OPERATED ON THE GROUND OR IN BUILDING WITH REMOTE CONTROLLER
- 2 OPERATION IS EASY BY USING LEVER TYPE CONTROLLER

5 MAST

- 1 STRONG ANGLE SQUARE TRUSS BY USING HIGH-TENSION STEEL
- 2 EASY INSTALLATION & DISMANTLEMENT WITH STRONG PIN CONNECTION TYPE

 KUMKANG PRECISION IND. CO., LTD.

HEAD OFFICE : TEL : (02)585-8651 FAX : (02)585-8630

HYUNJIN BLDG. 1330-3 SEDCHO-DONG, SEDCHO-GU, SEOUL, KOREA

JINCHEON : TEL : (0434)534-2611/7 FAX : (0434)534-3616

PUSAN OFFICE : TEL : (051)633-8921/5 FAX : (051)633-8996

TAEGU OFFICE : TEL : (053)741-891/5 FAX : (053)741-8996

KWANGJU OFFICE : TEL : (062)675-0534/7 FAX : (062)675-0539

TAEJEON OFFICE : TEL : (042)532-7475/8 FAX : (042)532-7479

YOUNGDONG OFFICE : TEL : (039)3645-580/4 FAX : (039)3645-5855

JINCHEON OFFICE : TEL : (032)493-8191/4 FAX : (032)493-8195