

3. 크레인의 동작

3. 5

로프

POWER SOURCE : 3φ Y 380/440V AC 50Hz

DIAMETER : 8mm

UNITARY WIRE DIAMETER : 0.45mm

TYPE : NON-ROATING MULTI-STAND ROPE (19 X 7)

BREAKING LOAD : 4525Kg

NET WEIGHT : 0.151 Kg/m

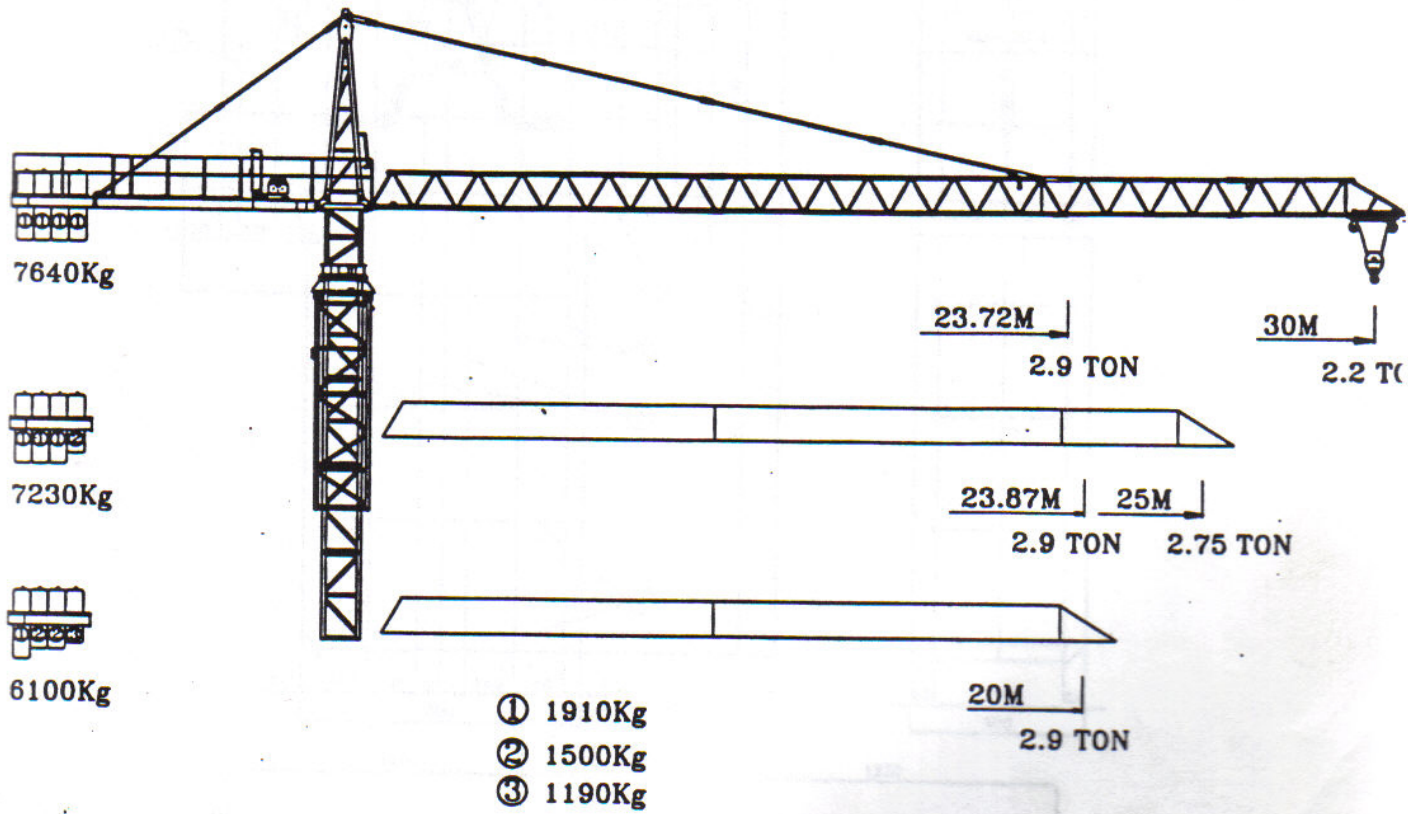
서비스 브레이크

TYPE : ELECTRIC MAGNETIC DISC BRAKE

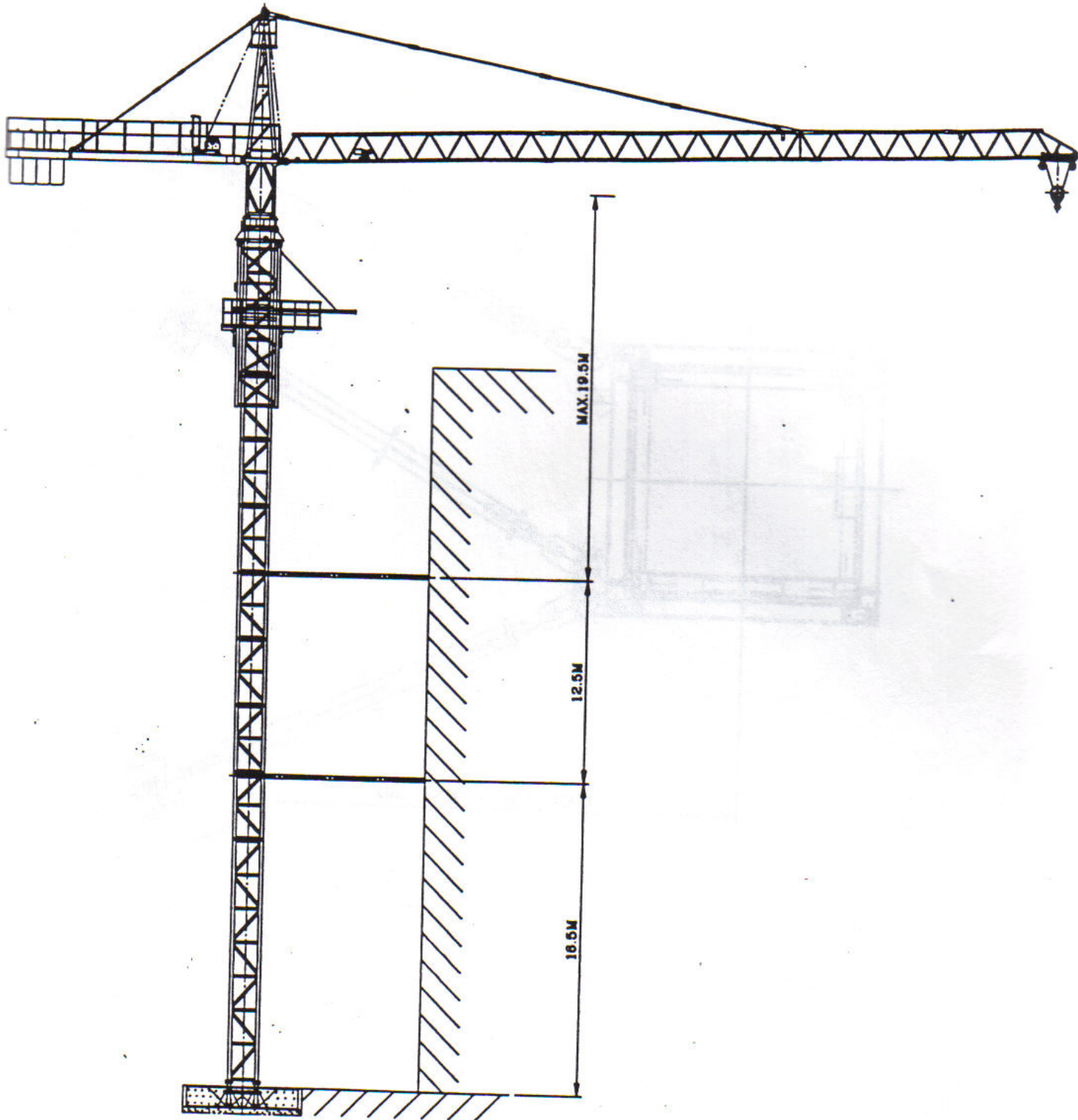
POWER SOURCE : DC 90V

RESISTANT TORQUE : 3 Kg · m

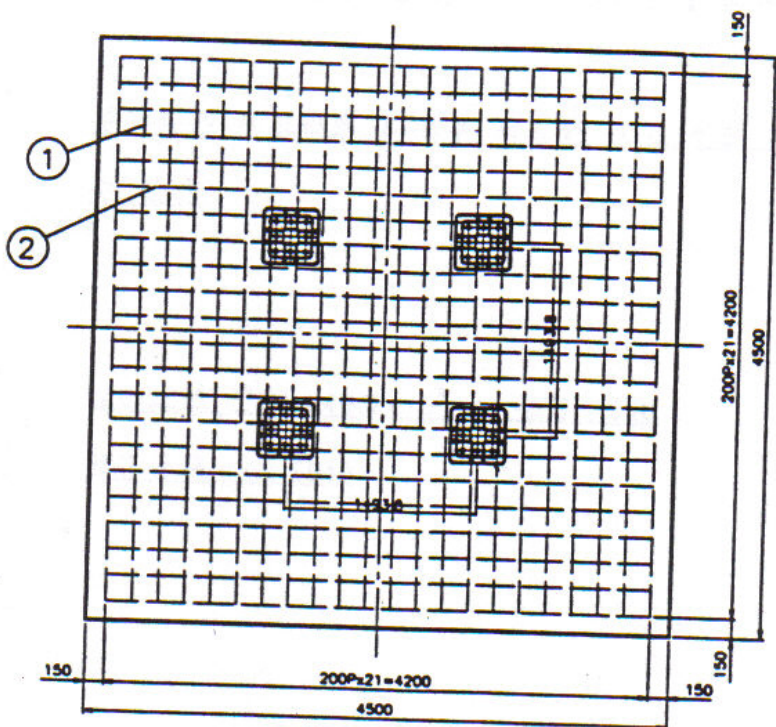
* 지브 길이에 따른 카운터 지브 발라스트의 배치도



* 벽지지대 설치도



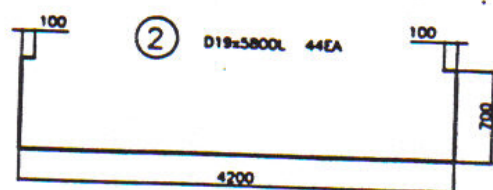
* FOUNDATION ANCHOR



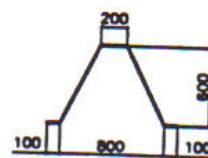
① D19=4200L 44EA



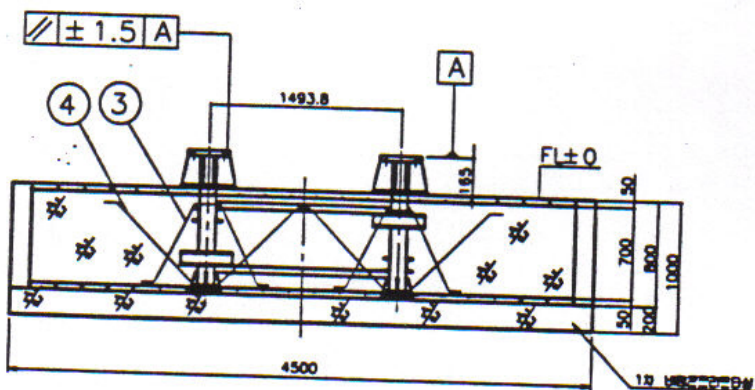
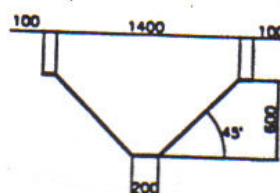
② D19=5800L 44EA



③ D19=1750L 32EA



④ D19=2100L 32EA



NOTE

1. CONCRETE SPECIFIC WEIGHT : 2400KG/M³
2. SOIL PRESSURE B : 15TON/M²
3. FOUNDATION WEIGHT : 48.6 TON
4. CONCRETE GRADE : 210KG/CM²
5. ROUND BAR MATERIAL : SD40