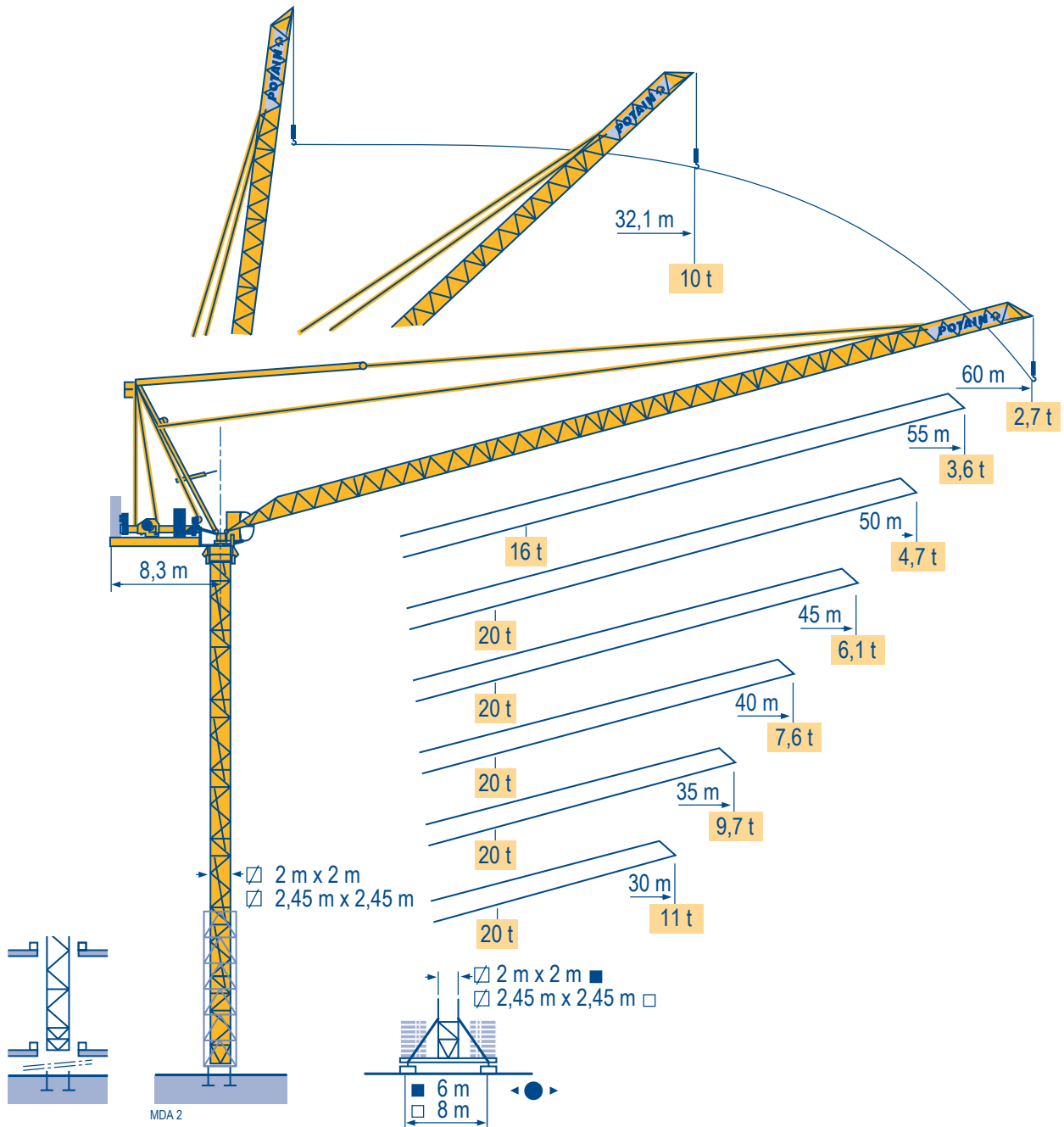


MR 295 H20



Mat / Réactions ☑ 2 m

Maste /
Eckdrücke

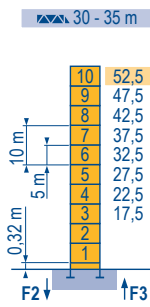
Masts /
Reactions

Mástil /
Reacciones

Torre / Reazioni

Tramo /
Reacções

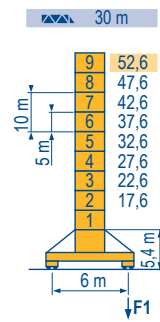
MDA 3



▲▲▲	H (m)	5 m	3,33 m
40 m	50,8	9	1
45 m	49,1	8	2
50 m	47,5	9	-
55 m	44,1	7	2
60 m	42,5	8	-

P 62 A

F2	● 227 t
	■ 302 t
F3	● 169 t
	■ 254 t
▲▲	76 t

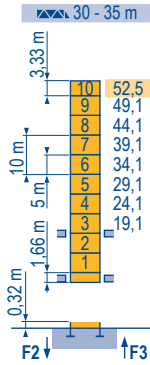


▲▲▲	H (m)	5 m	3,33 m
35 m	47,6	8	-
40 m	44,3	6	2
45 m	41	6	1
50 m	37,6	6	-
55 m	34,3	4	2
60 m	32,6	5	-

V 60 A

F1	● 137 t
	■ 130 t
▲▲	97 t

⊗
H

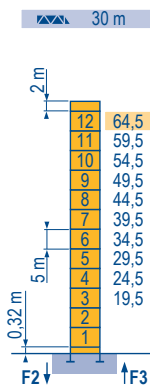


▲▲▲	H (m)	5 m	3,33 m
40 m	50,8	8	2
45 m	49,1	9	-
50 m	47,5	8	1
55 m	42,5	7	1
60 m	39,1	7	-

B 60 A

▲	76 t
---	------

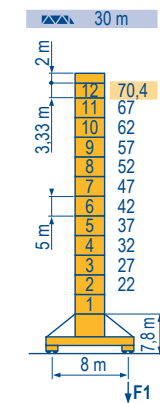
☑ 2,45 m



▲▲▲	H (m)	5 m	3,33 m
35 m	61,1	10	2
40 m	57,8	10	1
45 m	56,1	9	2
50 m	52,8	9	1
55 m	51,1	8	2
60 m	49,5	9	-

P 800 A

F2	● 230 t
	■ 302 t
F3	● 172 t
	■ 254 t
▲▲	97 t

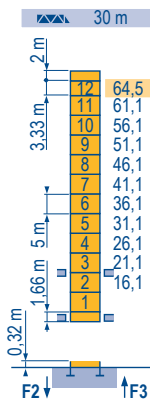


▲▲▲	H (m)	5 m	3,33 m
35 m	67	11	-
40 m	63,7	9	2
45 m	62	10	-
50 m	58,7	8	2
55 m	55,4	8	1
60 m	53,7	7	2

Y 800 A

F1	● 149 t
	■ 196 t
▲	137 t

⊗
H



▲▲▲	H (m)	5 m	3,33 m
35 m	61,1	11	-
40 m	57,8	9	2
45 m	56,1	10	-
50 m	52,8	8	2
55 m	51,1	9	-
60 m	49,5	8	1

B 800 B

▲	76 t
---	------

MR 295 H20

POTAIN

F

Réactions en service

Réactions hors service

▲
A vide sans lest (ni train de transport) avec flèche et hauteur maximum.

D

Reaktionskräfte in Betrieb

Reaktionskräfte außer Betrieb

Ohne Last, Ballast (und Transportachse), mit Maximalausleger und Maximalhöhe.

GB

Reactions in service

Reactions out of service

Without load, ballast (or transport axes), with maximum jib and maximum height.

E

Reacciones en servicio

Reacciones fuera de servicio

Sin carga, sin lastre, (ni tren de transporte), flecha y altura máxima.

I

Reazioni in servizio

Reazioni fuori servizio

A vuoto, senza zavorra (ne assali di trasporto) con braccio massimo e altezza massima.

P

Reacções em serviço

Reacções fora de serviço

Sem carga (nem trem de transporte)- sem lastro com lança e altura máximas.

Mécanismes
Antriebe
Mechanisms
Meccanismi
Mecanismos

MDA 3

MR 295 H20 50 Hz - 60 Hz												ch - PS hp	kW														
	100 LVF 50 Optima	m/min	0	→	36	→	54	→	86	→	94	0	→	18	→	27	→	43	→	47	100	75	1018 m				
	t	10		6		3		1,9	20		12		6		3,8												
	150 LCC 50	m/min	0	→	58	→	68	→	86	→	114	→	138	0	→	29	→	34	→	43	→	57	→	69	150	110	786 m
	t	10		7,5		5		2,5		1,25	20		15		10		5		2,5								
	100 VVF 40	m/min	1 min 40 s										100	75													
	RVF 182 Optima +	tr/min U/min - rpm	0 → 0,8										2 x 12	2 x 9													
		m/min																									
CEI 38		IEC 38		kVA																							
400 V (+6% -10%) 50 Hz				100 LVF : 220 kVA 150 LCC : 270 kVA																							
480 V (+6% -10%) 60 Hz				100 LVF : 220 kVA 150 LCC : 300 kVA																							

F	D	GB	E	I	P
Levage	Heben	Hoisting	Elevación	Sollevamento	Elevação
Relevage	Ausleger-Einziehen	Luffing	Elevación de flecha	Brandeggio	Inclinação da lança
Orientation	Schwenken	Slewing	Orientación	Rotazione	Rotação
Translation	Kranfahren	Travelling	Traslación	Traslazione	Tranlação
Nous consulter	Auf Anfrage	Consult us	Consultarnos	Consultateci	Consultar-nos

Document commercial non contractuel. Pour toute information technique se référer à la notice correspondante. Unverbindliches Vertriebsdokument. Für technische Informationen, siehe die entsprechenden Anweisungen. This commercial document is not legally binding. For any technical information, please refer to the corresponding instructions. Documento comercial no contractuel. Para cualquier información técnica, ver la noticia correspondiente. Documento commerciale non vincolante, per tutte le informazioni tecniche fare riferimento al catalogo istruzioni. Documento comercial não contractual. Para qualquer informação técnica complementar consultar as respectivas instruções.



18, rue de Charbonnières - B.R.173
69132 ECULLY Cedex - France
Tél. : +33 (0) 4 72 18 20 20
Fax. : +33 (0) 4 72 18 20 00
www.manitowoccrane.com

Americas
Tel : +1 888 479 7278
Tel : +1 717 593 2000

Europe - Middle East - Africa
Tel : +33 (0) 4 72 81 50 00
Tel : +44 (0) 191 522 2000

Asia - Pacific
Tel : +65 6264 1188
Fax : +65 6862 4142
www.manitowoccrane.com

MR 295 H20
Réf. 2005 20 MDA 6

Copyright.Reproduction interdite © POTAIN 2005

Réalisation Secloc