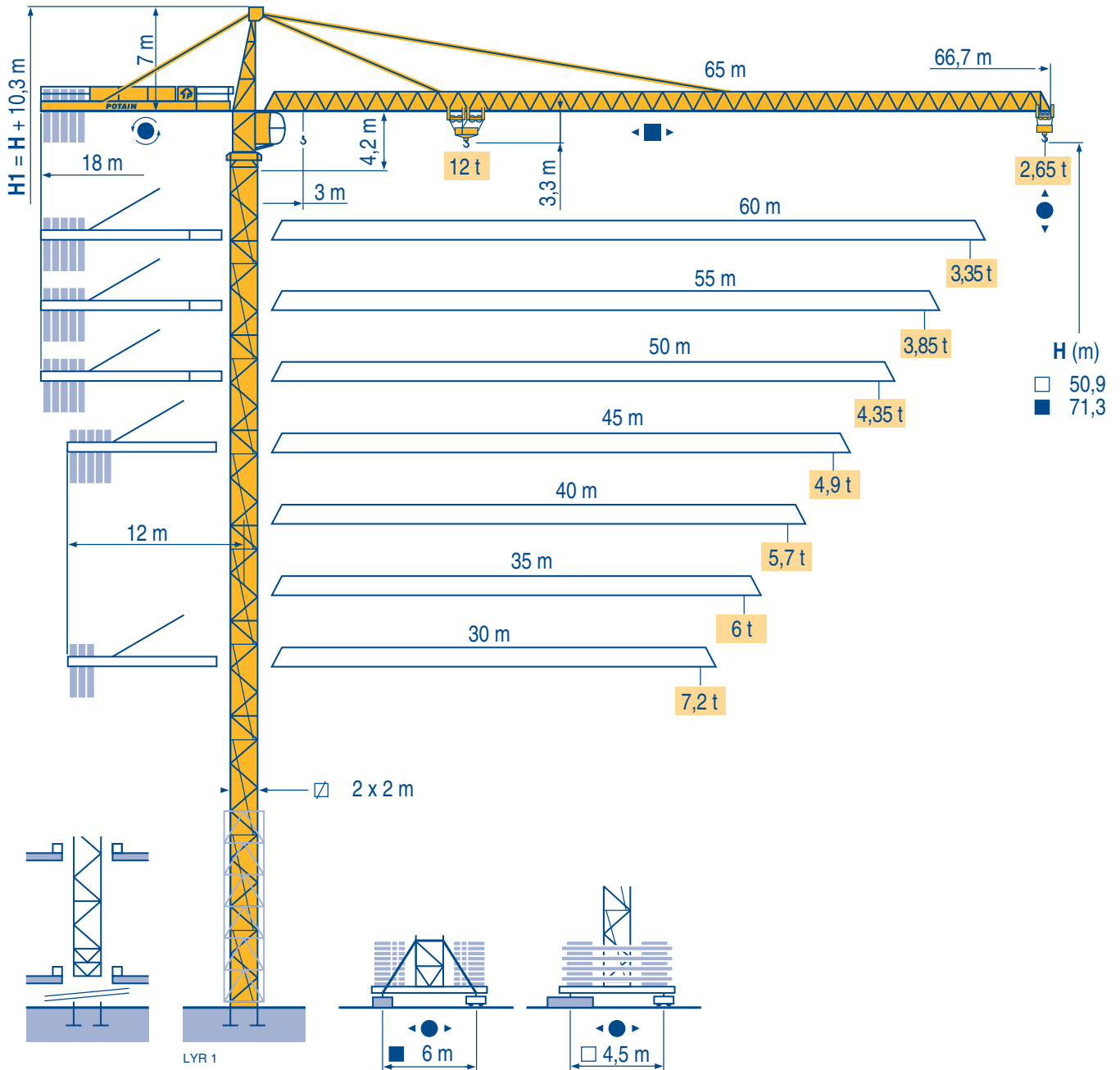


MD 265 B1 J12

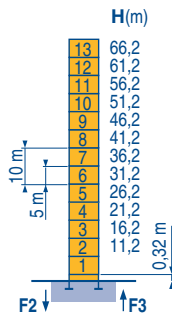


TOPKIT

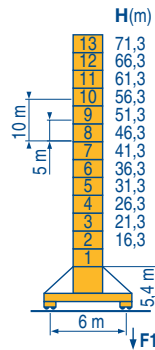
CE FEM 1.001-A3

Mat / Réactions \square 2 m
 Maste / Eckdrücke 30 m \Rightarrow 65 m
 Masts / Reactions
 Mástil / Reacciones
 Torre / Reazioni
 Tramo / Reações

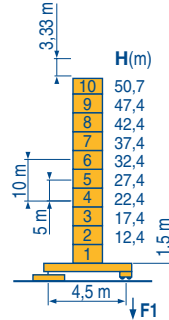
LVR 1



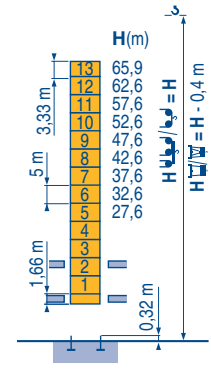
P 61 A	
F2	● 166 t
	■ 224 t
F3	● 114 t
	■ 177 t
	▲ 73 t



V 60 A	
F1	● 114 t
	■ 147 t
	▲ 86 t



ZD 463	
F1	● 96 t
	■ 96 t
	▲ 78 t

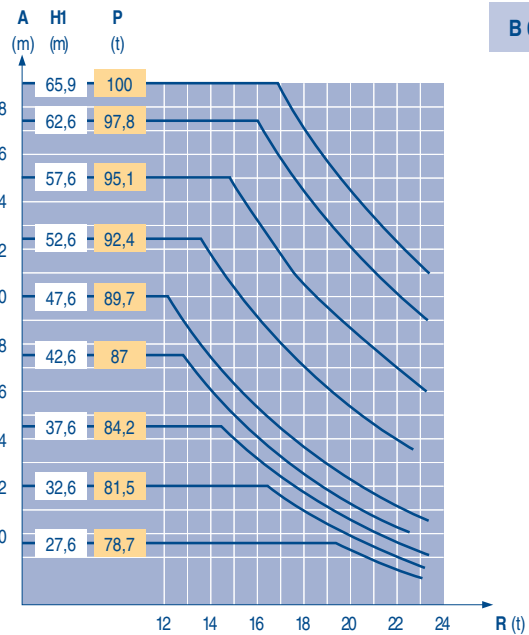
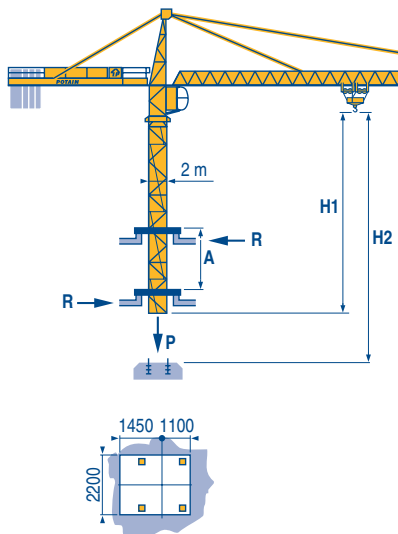


B 60 A	
F1	● 96 t
	■ 96 t
	▲ 78 t



Télescopage sur dalles
 Kletterkrane im Gebäude
 Climbing crane
 Telescopage gruas trepadoras
 Gru in cavedio
 Telescopagem sobre lages

LVR 1



TOPKIT
 MD 265 B1 J12

POTAIN

F	D	GB	E	I	P
● Réactions en service ■ Réactions hors service ▲ A vide sans lest (ni train de transport) avec flèche et hauteur maximum.	● Reaktionskräfte in Betrieb ■ Reaktionskräfte außer Betrieb ▲ Ohne Last, Ballast (und Transportachse), mit Maximalausleger und Maximalhöhe.	● Reactions in service ■ Reactions out of service ▲ Without load, ballast (or transport axes), with maximum jib and maximum height.	● Reacciones en servicio ■ Reacciones fuera de servicio ▲ Sin carga, sin lastre, (ni tren de transporte), flecha y altura máxima.	● Reazioni in servizio ■ Reazioni fuori servizio ▲ A vuoto, senza zavorra (ne assali di trasporto) con braccio massimo e altezza massima.	● Reações em serviço ■ Reações fora de serviço ▲ Sem carga (nem trem de transporte) - sem lastro com lança e altura máximas.
i Nous consulter	i Auf Anfrage	i Consult us	i Consultarnos	i Consultateci	i Consultar-nos

Courbes de charges

Lastkurven

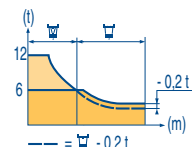
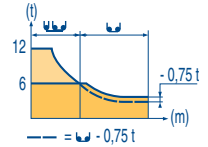
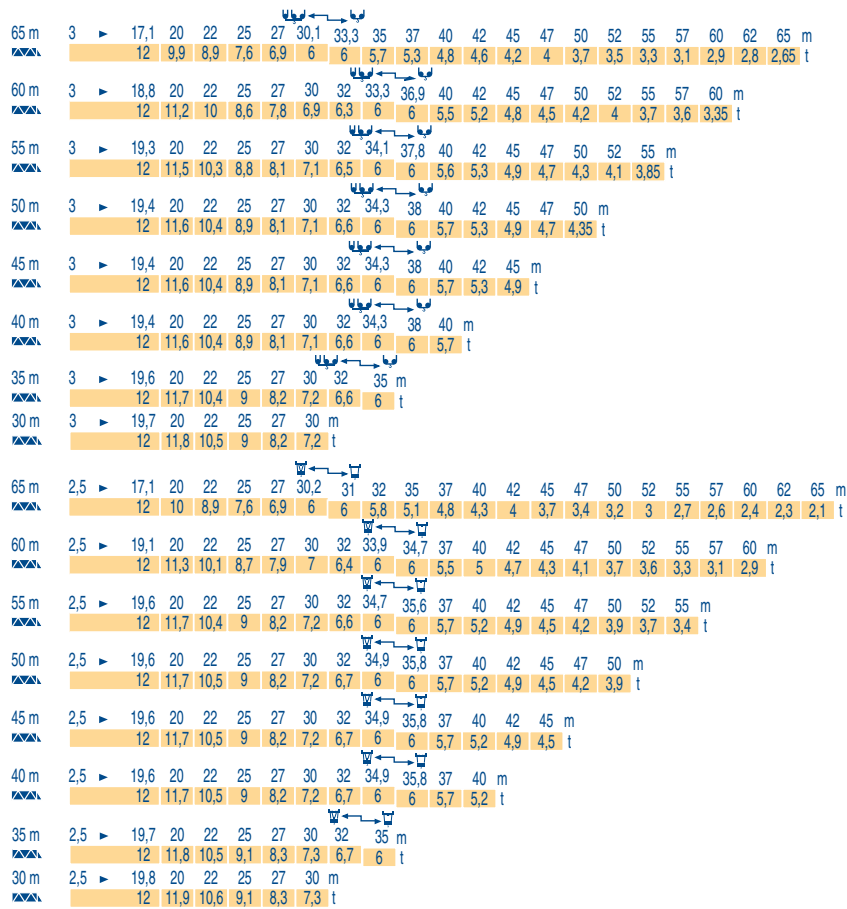
Load diagrams

Curvas de cargas

Curve di carico

Curva de cargas

LVR 1



Lest de contre-flèche

Gegenauslegerballast

Counter-jib ballast

Lastre de contra flecha

Contrappeso

Lastros da contra lança

LVR 1

	4 600 - 4 200 - 3 400 - 2 300 kg		4 200 - 700 kg	
		50 - 75 LVF (kg)	50 - 75 LVF (kg)	150 LCC (kg)
65 m	18 m	19 900	19 600	17 500
60 m	18 m	18 400	18 200	16 800
55 m	18 m	16 000	15 400	14 000
50 m	18 m	13 700	13 300	11 900
45 m	12 m	25 200	24 500	23 800
40 m	12 m	24 100	23 100	21 700
35 m	12 m	20 600	19 600	18 200
30 m	12 m	16 000	15 400	14 000

Lest de base

Grundballast

Base ballast

Lastre de base

Zavorra di base

Lastros da base

LVR 1

2 m	V 60 A	H (m)	71,3	66,3	61,3	56,3	51,3	46,3	41,3	36,3	31,3	26,3	21,3	16,3
			(t)	132	96	72	60	36	36	36	36	36	36	36
2 m	ZD 463	H (m)	50,7	47,4	42,4	37,4	32,4	27,4	22,4	17,4	12,4			
			(t)	75	75	75	75	75	75	75	75	75		

Ancrages

Verankerungen

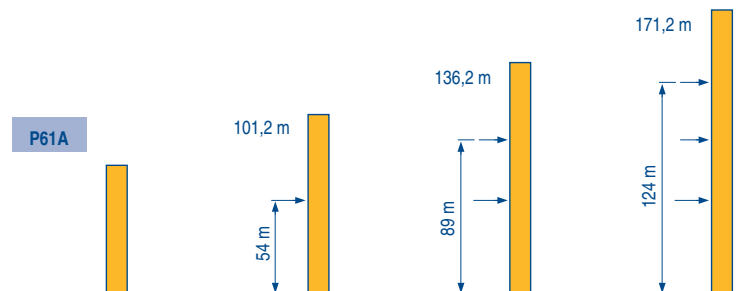
Anchorage

Anclaje

Ancoraggio

Ancoragem

LVR 1



TOPKIT

MD 265 B1 J12

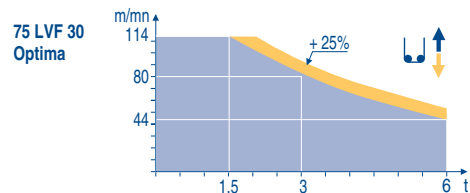
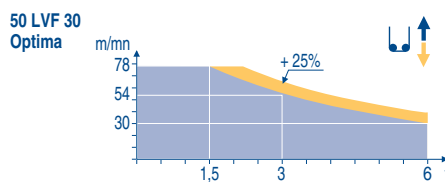


	F	D	GB	E	I	P
A	Distance entre cadres	Abstand zwischen den Rahmen	Distance between collars	Distancia entra marcos	Distanza fra i telai	Distância entre quadros
H1	Hauteur grue	Kranhöhe	Crane height	Altura grúa	Altezza gru	Altura da grua
P	Poids de la grue(en service)	Krangewicht (in Betrieb)	Crane weight (in service)	Peso de la grúa (en servicio)	Peso della gru (in servizio)	Peso da grua (em serviço)
R	Réaction horizontale	Horizontalkräfte	Horizontal reaction	Reaccion horizontal	Reazione orizzontale	Reacção horizontal
	Voir télescopage sur dalles	Siehe Kletterkrane im Gebäude	See climbing crane	Veja grua trepadora	Consultare gru in cavedio	Ver telescopagem sobre lages

Mécanismes
Antriebe
Mechanisms
Meccanismi
Mecanismos

LVR 1

		↑						↑						ch - PS hp	kW	
50 LVF 30 Optima	m/min	2,4 → 9,6 → 30	38 → 54 → 78	1,2 → 4,8 → 15	19 → 27 → 39	50	37	340 m								
	t	6 6 6	4,5 3 1,5	12 12 12	9 6 3											
75 LVF 30 Optima	m/min	3,6 → 14 → 44	56 → 80 → 114	1,8 → 7 → 22	28 → 40 → 57	75	55	570 m								
	t	6 6 6	4,5 3 1,5	12 12 12	9 6 3											
150 LCC 30	m/min	86 → 103 → 129	172 → 206	43 → 52 → 65	86 → 103	150	110	652 m								
	t	6 4,5 3	1,5 0,75	12 9 6	3 1,5											
6 DVF 4	m/min	0 → 50 (12 t) 0 → 100 (6 t) 0 → 120 (3 t)						5,5	4							
RVF 152 Optima	tr/min U/min rpm	0 → 0,7						2 x 5,5	2 x 4							
ZD 463	RT 443 A1 2V	15 - 30						4 x 5	4 x 3,7							
V 60 A	RT 544 A1 2V R ≥ 13 m	13,5 - 27						4 x 7	4 x 5,2							
CEI 38		IEC 38		STANDARD		kVA	PILOT									
400 V (+6% -10%) 50 Hz				50 LVF : 70 kVA 75 LVF : 95 kVA 150 LCC : 170 kVA			50 LVF : 75 kVA 75 LVF : 100 kVA 150 LCC : 175 kVA		2000/14							



F	D	GB	E	I	P
Levage	Heben	Hoisting	Elevación	Sollevamento	Elevação
Distribution	Katzfahren	Trolleying	Distribución	Distributionsione	Distribuição
Orientation	Schwenken	Slewing	Orientación	Rotazione	Rotação
Translation	Kranfahren	Travelling	Traslación	Traslazione	Translação
Conforme aux directives CEE sur le niveau acoustique	Gemäss EWG-Richtlinien für den Schall-Leistungspegel	In compliance with the EEC Instructions on noise level	Conforme con las directivas CEE sobre el nivel acustico	Conforme alle direttive CEE sul livello acustico	Conforme as directivas CEE sobre o nível acústico
Fonction Dialog Pilot possible	Funktion Dialog Pilot möglich	Dialog Pilot function possible	Funcion Dialog Pilot Posible	Possibilità di funzione Dialog Pilot	Função Dialog Pilot possível

Document commercial non contractuel. Pour toute information technique se référer à la notice correspondante

Unverbindliches Vertriebsdokument. Für technische Informationen, siehe die entsprechenden Anweisungen.

This commercial document is not legally binding. For any technical information, please refer to the corresponding instructions.

Documento comercial no contractuel. Para cualquier información técnica, ver la noticia correspondiente.

Documento commerciale non vincolante, per tutte le informazioni tecniche fare riferimento al catalogo istruzioni

Documento comercial não contractual. Para qualquer informação técnica complementar consultar as respectivas instruções



Americas
Tel: +1 920 683 6322
Tel: +1 717 597 8121

Europe - Middle East - Africa
Tel: +(33) 4 72 81 50 00
Tel: +(44) 191 565 6281

Asia - Pacific
Tel: +(65) 6861 7133
Fax: +(65) 6862 4142

www.manitowoccrane.com

18, rue de Charbonnières - B.P.173
69132 ECULLY Cedex - France

Tél. : (33) 4 72 18 20 20
Fax. : (33) 4 72 18 20 00
www.manitowoccrane.com www.potain.com

TOPKIT MD 265 B1 J12
Réf. 2003 48 LVR 1

Copyright.Reproduction interdite © POTAIN 2003