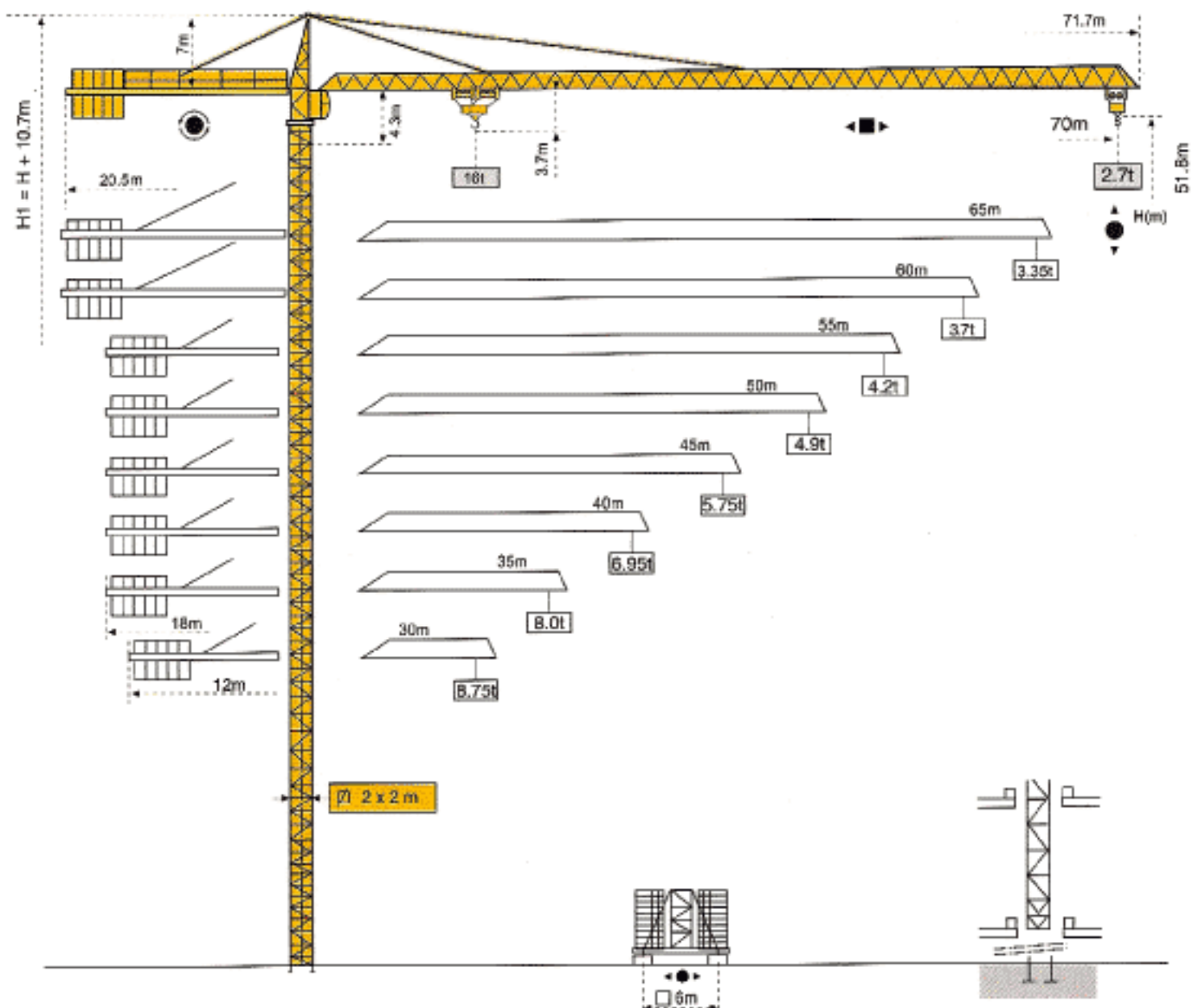


# MC 310 K16



STANDARD **CE** FEM 1.001

**TÜV**  
ISO 9001

**POTAIN**

**Manitowoc**  
Crane Group

A **Manitowoc** Company

# Masts / Reactions

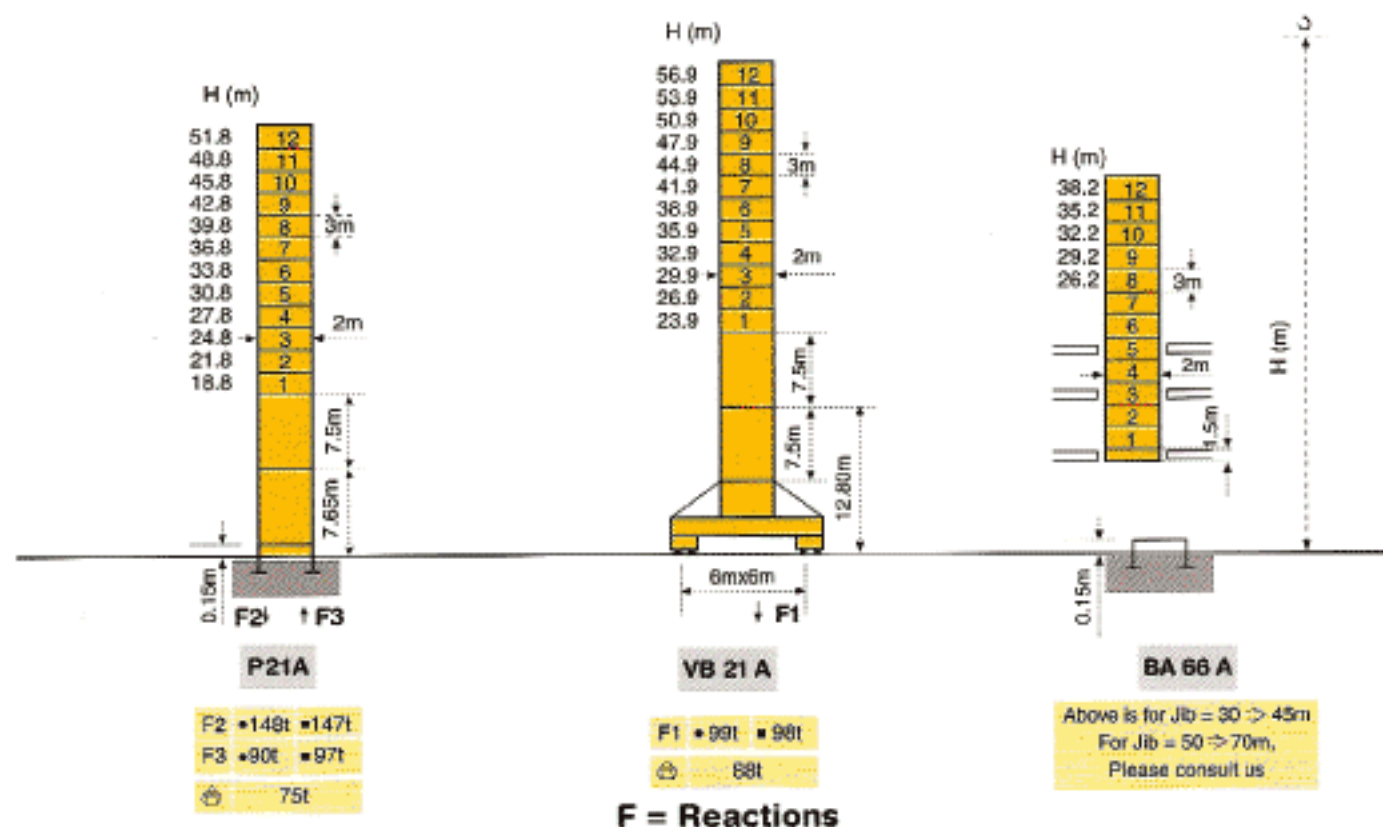
## Masts



2m

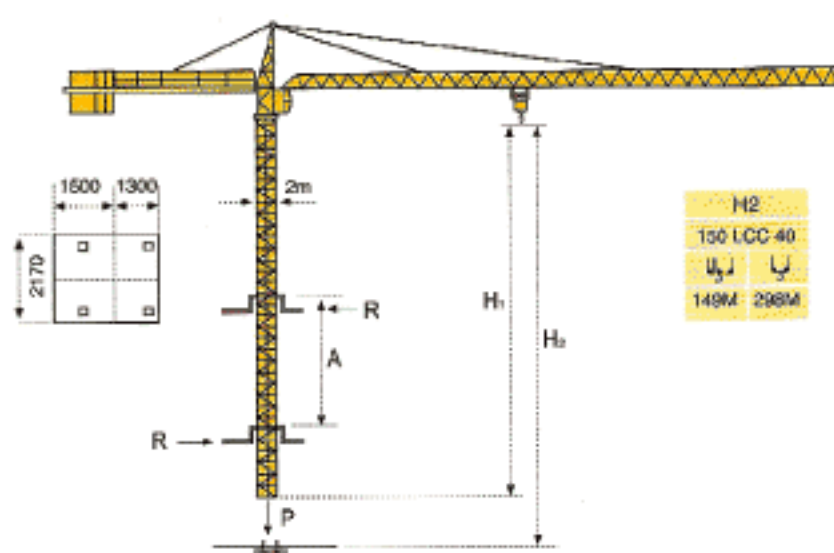
## Jib

30m → 70m



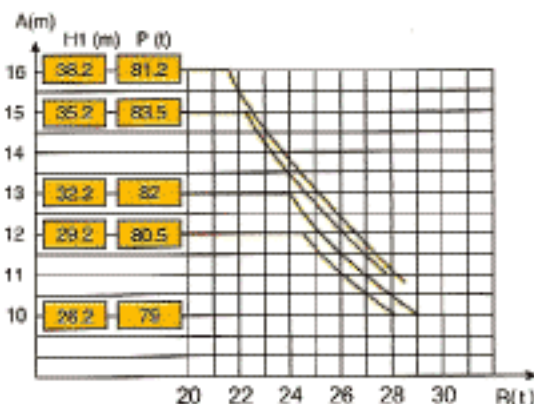
- In service
- Out of service
- ⊗ Without load and ballast with longest jib and maximum height

# Climbing crane

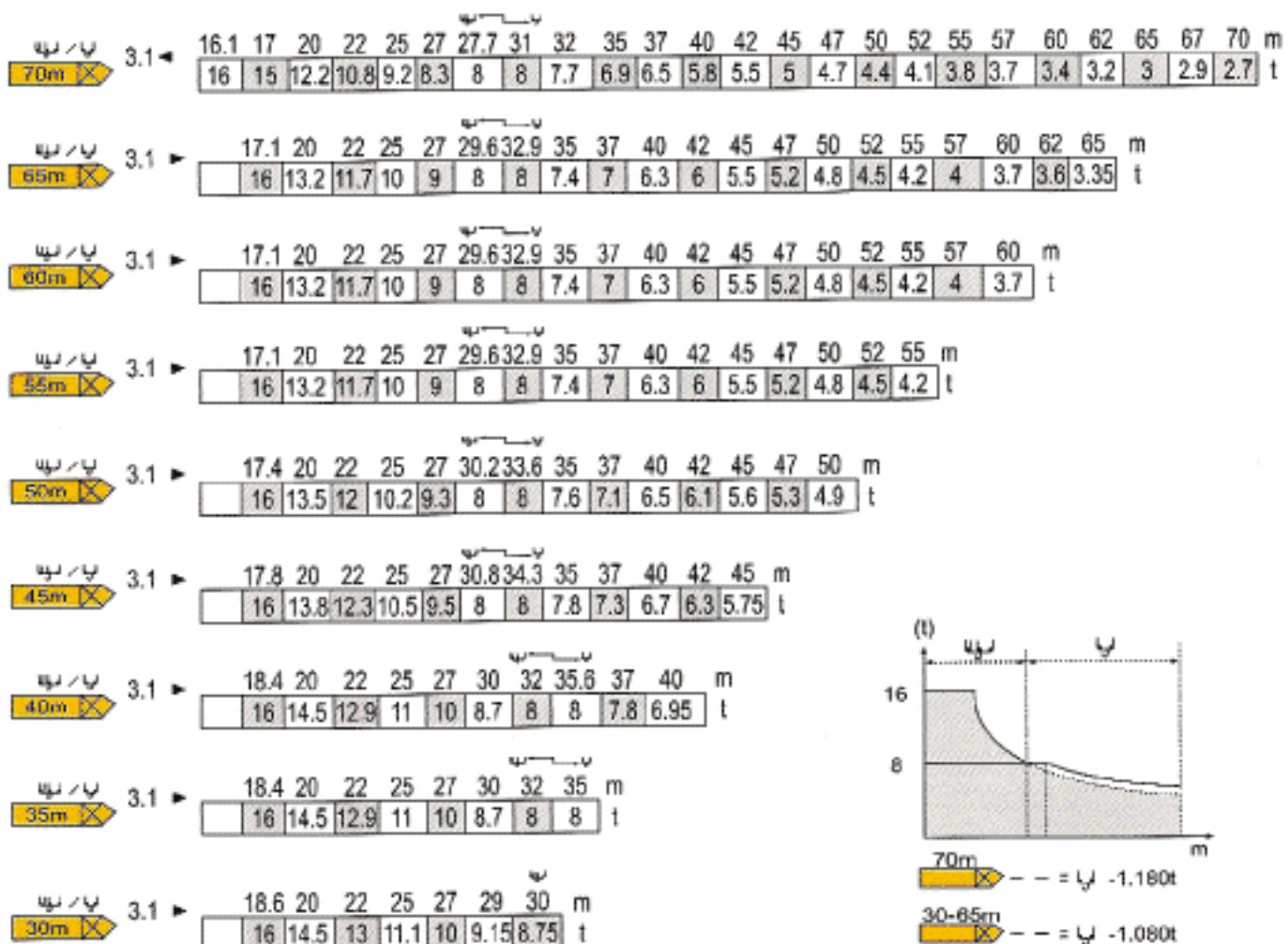


- A Distance between collars  
P Crane weight (in service)  
H1 Crane height  
R Horizontal reaction

BA 66 A

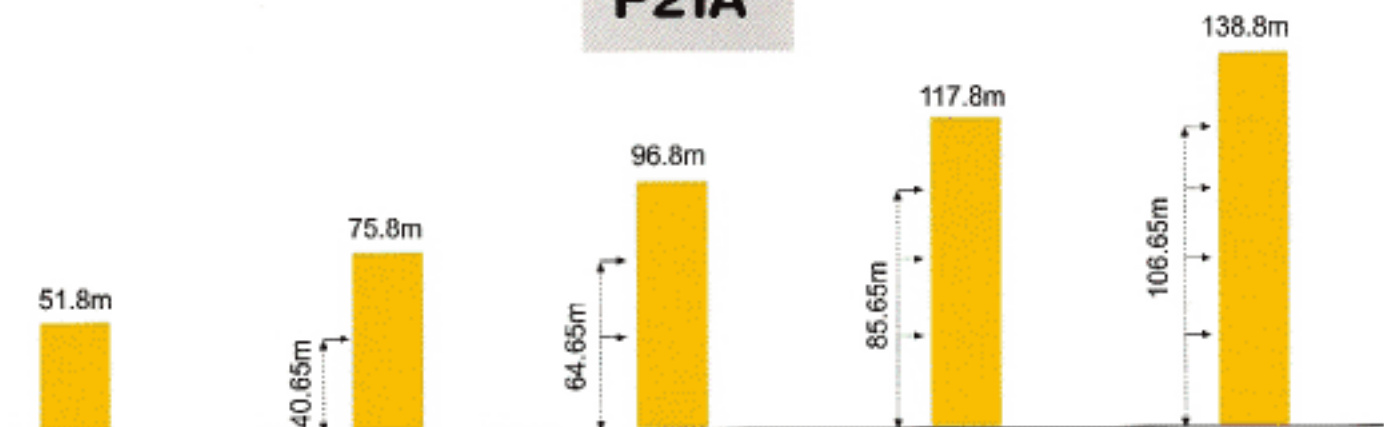


# Load diagrams









# Anchorage

P21A



# Mechanisms

		m/min	t	m/min	t	ch-Ps hp	kW	
Hoisting	 100 LVF 40 Optima	U ↑		U ↓		100	75	1009m
		0 ↓ 44 ↓ 56 ↓ 96 ↓ 116	8  6  3  2	0 ↓ 22 ↓ 28 ↓ 48 ↓ 58	16  12  6  4			
Trolleying	 6 DVF 6	0 ⇒ 42 m/min (16t)				5.5	4	
		0 ⇒ 84 m/min (8t)						
		0 ⇒ 100 m/min (4t)						
Slewing	 RVF 162	0 ⇒ 0.7 tr/min (rpm)				2 x 7.5	2 x 5.5	
Travelling	VB 20A VB 21A  R ≥ 13m RT 544 A1 2V	13.5 ⇒ 27 m/min				4 x 7	4 x 5.2	
CEI 38 	IEC 38	kVA		Generator set				
400V ( +6% - 10% ) 50Hz		150LCC : 175 kVA		*				

\* Please consult us.

Subject to Modification



**GROVE**  
**POTAIN** 

Manitowoc Crane Group Asia Pte Ltd  
 Manitowoc Crane Group

26 Benoi Road  
 Singapore 629 888  
 Tel: 65-6861 7133  
 Fax (Admin/Sales) : 65-6862 4040  
 Fax (Service/Parts) : 65-6862 4142  
 www.manitowoccrane.com

Copyright, © POTAIN 2003

**MC 310 K16**

Ref: 2003.06

