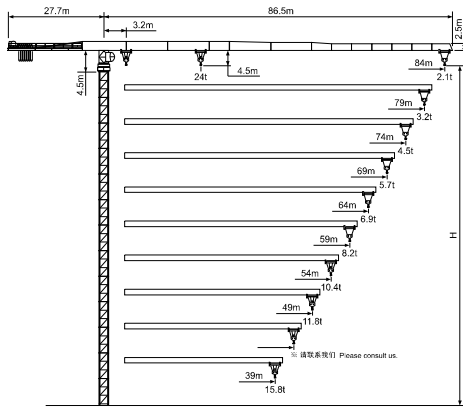
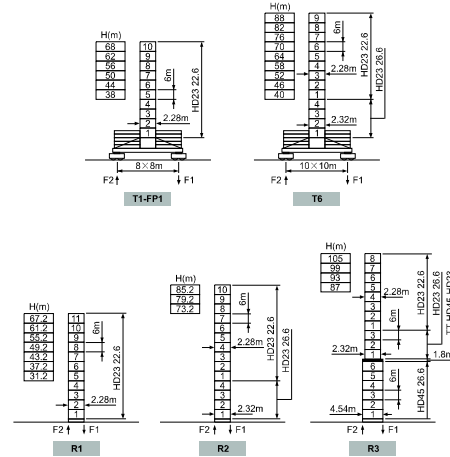


JTT500 N24



塔身 Masts

HD23



※ 请联系我们! Please consult us.
 ● 工作状态 In service F 反力 Reactions ■ 非工作状态 Out of service ◐ 自重 Without load and ballast with longest jib and maximum height

载荷特性 Load diagrams

吊钩高度 (m)	16	18	24	29	34	39	44	49	54	59	64	69	74	79	84
12t -22.91m	1	12	10.8	6.71	7.21	6.31	5.4	15.69	4.1	3.63	3.29	2.89	2.29	2.33	2.1
12t -21.92m	1	12	10	16.04	6.54	6.62	4.73	4	3.42	2.93	2.53	2.10	1.58	1.63	1.4
24t +12.37m	1	13.4	10	16.04	6.54	6.62	4.73	4	3.42	2.93	2.53	2.10	1.58	1.63	1.4
12t -27.59m	1	12	12	10.8	9.09	7.90	6.8	6.04	5.34	4.77	4.28	3.87	3.51	3.2	
12t -26.35m	1	12	12	10.8	8.41	7.31	6.28	5.39	4.63	4.07	3.58	3.17	2.81	2.5	
24t +14.22m	1	16.5	12	10.8	8.41	7.31	6.28	5.39	4.63	4.07	3.58	3.17	2.81	2.5	
12t -32.69m	1	12	12	12	11	9.8	8.57	7.49	6.67	5.99	5.41	4.82	4.3		
12t -31.16m	1	12	12	12	10.4	9.11	7.82	6.8	5.98	5.29	4.71	4.22	3.8		
24t -17.26m	1	20.2	15.8	12.9	10.4	9.11	7.82	6.8	5.98	5.29	4.71	4.22	3.8		
12t -38.88m	1	12	12	12	12	11	10.74	9.8	7.67	6.9	6.28	5.7			
12t -35.16m	1	12	12	12	12	10.6	9.19	8	7.07	6.3	5.69	5.1			
24t -19.37m	1	23.1	17.9	14.4	12	10.6	9.19	8	7.07	6.3	5.69	5.1			
12t -38.76m	1	12	12	12	12	12	10.6	9.43	8.44	7.6	6.9				
12t -37.93m	1	12	12	12	12	11.8	10	8.82	7.83	7	6.3				
24t +20.77m	1	24	19.4	15.1	13.1	11.6	10	8.82	7.84	7	6.3				
12t -42.38m	1	12	12	12	12	12	11.9	10	10.09	8.2					
12t -41.19m	1	12	12	12	12	12	11	9.77	8.69	7.8					
24t +22.44m	1	24	21.2	17.2	14.4	12.7	11	9.77	8.69	7.8					
12t -47.6m	1	12	12	12	12	12	12	11.6	10.4						
12t -46.18m	1	12	12	12	12	12	12	11.2	10						
24t -25.02m	1	24	24	24	24	24	24	24	24	24	24	24	24	24	24
12t -48.29m	1	12	12	12	12	12	12	12	11.8						
24t -26.13m	1	24	24	24	24	24	24	24	24	24	24	24	24	24	24
12t -39m	1	12	12	12	12	12	12	12	12						
24t -26.64m	1	24	24	24	24	24	24	24	24	24	24	24	24	24	24

机构 Mechanisms

起升 Hoisting	100LVP60	吊钩高度 (m)	m/min		t	kW	钢丝绳 Rope length
			0-34	12			
变频 Trolleying	15DVF	0-56m/min	15kW		75kW	520m	>520m※
			回转 Slewing	RCV145			
行走 Traveling	RT443	12.1-24.1m/min	6×3.4/1.7kW				

380V(±5%) 50Hz	※
----------------	---

※ 请联系我们! Please consult us.

内爬与附着 Climbing & Anchorages

