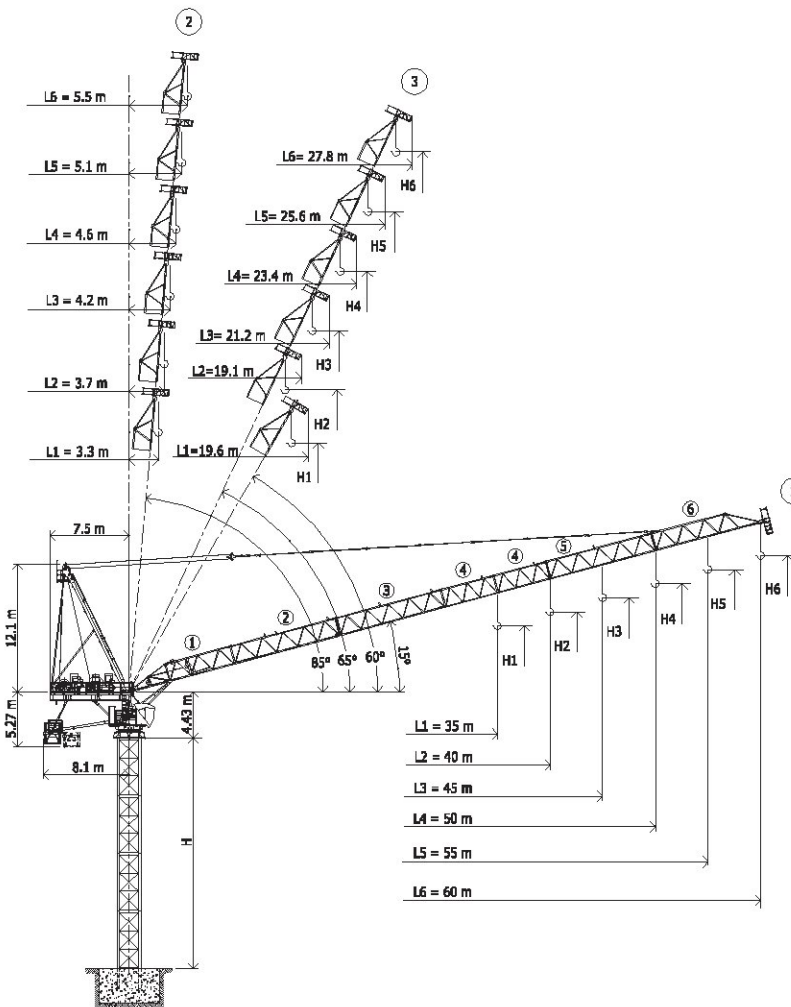


**TEREX | COMEDIL**

- Gru a torre a braccio impennabile
- Luffing Jib Tower Crane • Grue à tour à flèche relevable**
- Turmdrehkran mit Steilstellung-Ausleger
- Grúa torre de pluma abatible



	H		
	①	②	③
H <sub>1</sub>	H + 10.3	H + 34.9	H + 30.2
H <sub>2</sub>	H + 11.7	H + 40.1	H + 36.4
H <sub>3</sub>	H + 13.0	H + 45.3	H + 41.1
H <sub>4</sub>	H + 14.4	H + 50.4	H + 45.7
H <sub>5</sub>	H + 15.7	H + 55.6	H + 50.4
H <sub>6</sub>	H + 17.0	H + 60.7	H + 55.1

- H** Altezza torre **I**
- ① Sbraccio massimo
- ② Sbraccio minimo in servizio
- ③ Sbraccio minimo in fuori servizio
- H** Tower height **GB**
- ① Maximum jib
- ② Minimum jib (in service)
- ③ Minimum jib (out of service)
- H** Hauteur mât **F**
- ① Portée maxi.
- ② Portée min. en service
- ③ Portée min. hors service
- H** Turmhöhe **D**
- ① Max. Ausleger
- ② Mindest. Ausleger in Betrieb
- ③ Mindest. Ausleger außer Betrieb
- H** Altura torre **E**
- ① Pluma maxima
- ② Pluma minima en servicio
- ③ Pluma minima fuera de servicio

L <sub>1</sub>	(35 m) = 1 + 2 + 4 + 6
L <sub>2</sub>	(40 m) = 1 + 2 + 3 + 6
L <sub>3</sub>	(45 m) = 1 + 2 + 3 + 4 + 6
L <sub>4</sub>	(50 m) = 1 + 2 + 3 + 5 + 6
L <sub>5</sub>	(55 m) = 1 + 2 + 3 + 4 + 5 + 6
L <sub>6</sub>	(60 m) = 1 + 2 + 3 + 4 + 4 + 5 + 6

**CE FEM 1.001 A3**

In vigore dal: 01 gennaio 2007. Le specifiche del prodotto ed i prezzi sono soggetti a modifica senza alcun obbligo di preavviso. Le fotografie e/o disegni nel presente documento hanno uno scopo meramente illustrativo. Per il corretto utilizzo di ciascuna attrezzatura, si rimanda allo specifico manuale d'istruzioni. L'inosservanza di quanto previsto nel manuale d'istruzioni nell'utilizzo dell'attrezzatura, così come un comportamento irresponsabile potrebbero cagionare gravi lesioni o il decesso. Le nostre attrezzature sono coperte solo ed esclusivamente dalla garanzia standard scritta prevista per ogni specifico prodotto, con esclusione di qualsivoglia ulteriore garanzia, sia tacita che espressa, da parte di Terex. I prodotti e servizi elencati possono essere marchi di fabbrica, di servizi o ragioni sociali appartenenti a Terex Corporation e/o alle sue affiliate operative sia negli USA che in altri paesi e tutti i diritti s'intendono riservati. "TEREX" è un marchio appartenente a Terex Corporation e registrato sia negli USA che in altri paesi. Copyright © 2007 Terex Corporation.

Effective Date: January 01, 2007. Product specifications and prices are subject to change without notice or obligation. The photographs and/or drawings in this document are for illustrative purposes only. Refer to the appropriate Operator's Manual for instructions on the proper use of this equipment. Failure to follow the appropriate Operator's Manual when using our equipment or to otherwise act irresponsibly may result in serious injury or death. The only warranty applicable to our equipment is the standard written warranty applicable to the particular product and sale and Terex makes no other warranty, express or implied. Products and services listed may be trademarks, service marks or trade-names of Terex Corporation and/or its subsidiaries in the USA and other countries and all rights are reserved. "TEREX" is a registered trademark of Terex Corporation in the USA and many other countries. Copyright © 2007 Terex Corporation.

UTEDOC. REV.000

**CTL 340-24 HD23**

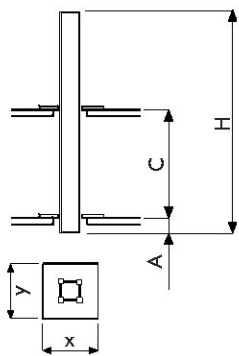
# CTL 340-24

Diagramma di portata **I**      Courbes de charges **F**      Curvas de cargas **E**  
 Load Diagram **GB**      Lastkurven **D**

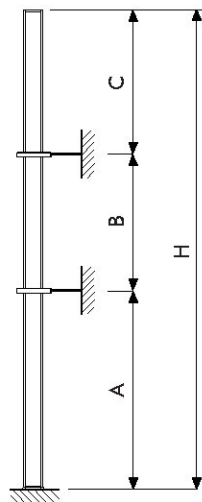
		CTL 340-24										
		10	15	20	25	30	35	40	45	50	55	60
	12 t - 21.30 m	12.00	12.00	12.00	10.18	8.42	7.15	6.21	5.47	4.88	4.40	4.00
	12 t - 24.40 m	12.00	12.00	12.00	11.72	9.70	8.25	7.17	6.32	5.65	5.10	
	18 t - 16.30 m	18.00	18.00	14.57	11.53	9.50	8.06	6.97	6.12	5.45	4.90	
	12 t - 27.40 m	12.00	12.00	12.00	12.00	10.94	9.32	8.10	7.15	6.40		
	18 t - 18.10 m	18.00	18.00	16.26	12.84	10.56	8.93	7.71	6.76	6.00*		
	24 t - 13.70 m	24.00	21.96	16.26	12.84	10.56	8.93	7.71	6.76	6.00		
	12 t - 29.40 m	12.00	12.00	12.00	12.00	11.76	10.02	8.71	7.70			
	18 t - 19.40 m	18.00	18.00	17.47	13.81	11.37	9.62	8.31	7.30*			
	24 t - 14.70 m	24.00	23.58	17.47	13.81	11.37	9.62	8.31	7.30			
	12 t - 30.90 m	12.00	12.00	12.00	12.00	12.00	10.57	9.20				
	18 t - 20.40 m	18.00	18.00	18.00	14.58	12.01	10.17	8.80*				
	24 t - 15.50 m	24.00	24.00	18.44	14.58	12.01	10.17	8.80				
	12 t - 31.00 m	12.00	12.00	12.00	12.00	12.00	10.80					
	18 t - 20.80 m	18.00	18.00	18.00	14.89	12.27	10.40*					
	24 t - 15.80 m	24.00	24.00	18.83	14.89	12.27	10.40					

\* = + 200 kg [ - 50 m - 45 m - 40 m - 35 m] **i**

Altre installazioni **I**      Autres implantations **F**      Otras implantaciones **E**  
 Other configurations **GB**      Aufstellmöglichkeiten **D**



**i**  
 Gru climbing  
 Bottom climbing crane  
 Télécopage sur dalles  
 Kletterkran im Gebäude  
 Grúa trepadora **I**  
**GB**  
**F**  
**D**  
**E**



**i**  
 Gru ancorata  
 Crane tied to the structure  
 Grue ancrée  
 Geankerter Kran  
 Grúa anclada **I**  
**GB**  
**F**  
**D**  
**E**

		HD 23 -22			
		[m]			
		L <sub>1</sub>	L <sub>2-3</sub>	L <sub>4</sub>	L <sub>5-6</sub>
<b>A</b>	min/max	36/48	36/42	36/42	30/36
<b>B</b>	min/max	24/30	24/30	24/30	24/30
<b>C</b>	max	30	30	28	26
<b>H</b>	max	<b>i</b>			

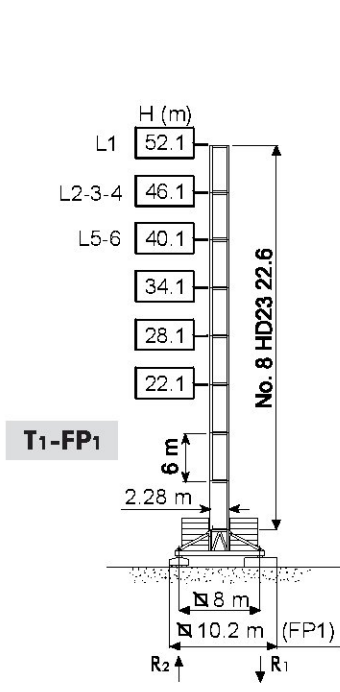
**i** Consultateci **I** Consult us **GB** Nous consulter **F** Auf Anfrage **D** Consultamos **E**



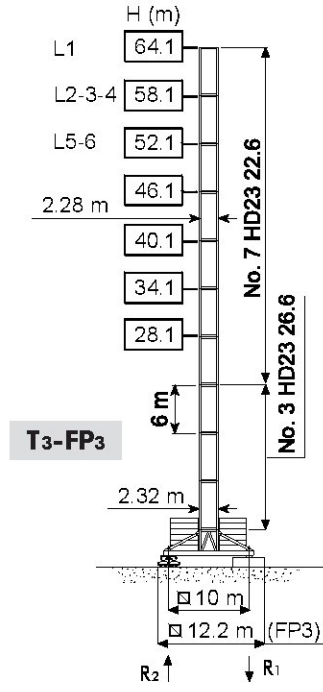
# CTL 340-24

Torre	<b>I</b>	Tour	<b>F</b>	Torre	<b>E</b>
Tower	<b>GB</b>	Turm	<b>D</b>		

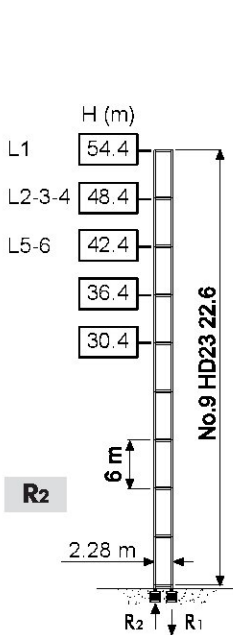
## HD23



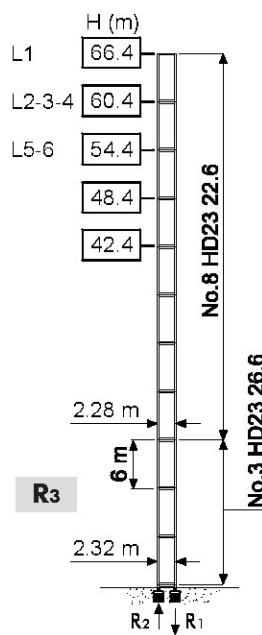
R1	1360 kN ●	1820 kN ◊
R2		
	105 t	



R1	1380 kN ●	1840 kN ◊
R2		
	130 t	



R1	2600 kN ●	4080 kN ◊
R2	1850 kN ●	3480 kN ◊
	90 t	



R1	3000 kN ●	5100 kN ◊
R2	2180 kN ●	4400 kN ◊
	105 t	

H	Altezza torre	<b>I</b>
●	In servizio	
◊	Fuori servizio	
	A vuoto, senza zavorra, braccio max., altezza max.	
H	Tower height	<b>GB</b>
●	In service	
◊	Out of service	
	Without load, without ballast, max. jib and max. height	
H	Hauteur mât	<b>F</b>
●	En service	
◊	Hors service	
	A vide, sans lest, avec flèche et hauteur maximum	
H	Turmhöhe	<b>D</b>
●	In Betrieb	
◊	Außer Betrieb	
	Ohne Last und Ballast, mit Maximalausleger und Maximalhöhe	
H	Altura torre	<b>E</b>
●	En servicio	
◊	Fuera de servicio	
	Sin carga, sin lastre, con pluma y altura máxima	

Meccanismi **I**

Mechanisms **GB**

Mécanismes **F**

Antriebe **D**

Mecanismos **E**

	90 AFC 120 - LFC 67 233 kVA	233 kVA	400 V - 50 Hz / 460 V - 60 Hz	2000/14/CE modificata
	80 AFC 120 - LFC 67 222 kVA	222 kVA		

		m/min	t	kW	
<b>80 AFC 120 (VECTOR)</b>		0 ≈ 31	12	80	640 m
		0 ≈ 38	9		
		0 ≈ 52	6		
		0 ≈ 93	3		
		0 ≈ 109	2		
		0 ≈ 20.7	18		
		0 ≈ 25.3	13.5		
		0 ≈ 34.7	9		
		0 ≈ 62.0	4.5		
		0 ≈ 72.7	3		
		0 ≈ 15.5	24		
		0 ≈ 19.0	18		
		0 ≈ 26.0	12		
		0 ≈ 46.5	6		
		0 ≈ 54.5	4		
<b>90 AFC 120 (VECTOR)</b>		0 ≈ 32	12	90	1030 m
		0 ≈ 41	9		
		0 ≈ 58	6		
		0 ≈ 103	3		
		0 ≈ 130	2.1		
		0 ≈ 21.3	18		
		0 ≈ 27	13.5		
		0 ≈ 39	9		
		0 ≈ 69	4.5		
		0 ≈ 87	3.15		
		0 ≈ 16	24		
		0 ≈ 20	18		
		0 ≈ 29	12		
		0 ≈ 51	6		
		0 ≈ 65	4.2		

	<b>LFC 67 (VECTOR)</b>	1.9 min	67 kW
	<b>SCC 2 2 112L</b>	0 ≈ 0.75 r.p.m.	2 × 15 kW
	<b>TSR 2RG 4M8</b>	0 ≈ 24 m/min	4 × 80 Nm
	<b>i</b>		

	Sollevamento <b>I</b>	Hoisting <b>GB</b>	Levage <b>F</b>	Heben <b>D</b>	Elevación <b>E</b>
	Brandeggio	Luffing	Relevage	Ausleger-Einziehen	Elevación de pluma
	Rotazione	Slewing	Orientation	Schwenken	Orientación
	Traslazione	Travelling	Translation	Schienefahren	Traslación
	Direttiva sul livello acustico	Directive on noise level	Directive sur le niveau acoustique	Richtlinie für den Schall-Leistungspegel	Directiva sobre el nivel acustico
	Consultateci	Consult us	Nous consulter	Auf Anfrage	Consultarnos
	Potenza totale richiesta	Power requirements	Puissance totale nécessaire	Geforderte Stromstärke	Potencia necesaria
	Alimentazione	Power supply	Alimentation	Stromversorgung	Alimentación

**Gru Comedil s.r.l.**

A Terex Company

Via delle Innovazioni 17, 33074 Fontanafredda (PN) - Italy  
Tel. (+39) 0434 567 311 - Telefax (+39) 0434 998631

Internet e-mail: info@comedil.com  
Internet home page: www.comedil.com

**Divisione Automontanti**

Via Alessandrina, 25 - 20095 Cusano Milanino (MI) - Italy  
Tel. (+39) 02 613 16011 - Telefax (+39) 02 613 16034

Internet e-mail: info.CBR@comedil.com

**Bigge Crane and Rigging Co.**

10700 Bigge Avenue  
San Leandro, CA 94577  
Phone: (888) 337-BIGGE or (510) 638-8100  
Fax: (510) 639-4053  
Email: towers@bigge.com  
Web site: www.biggetowercrane.com