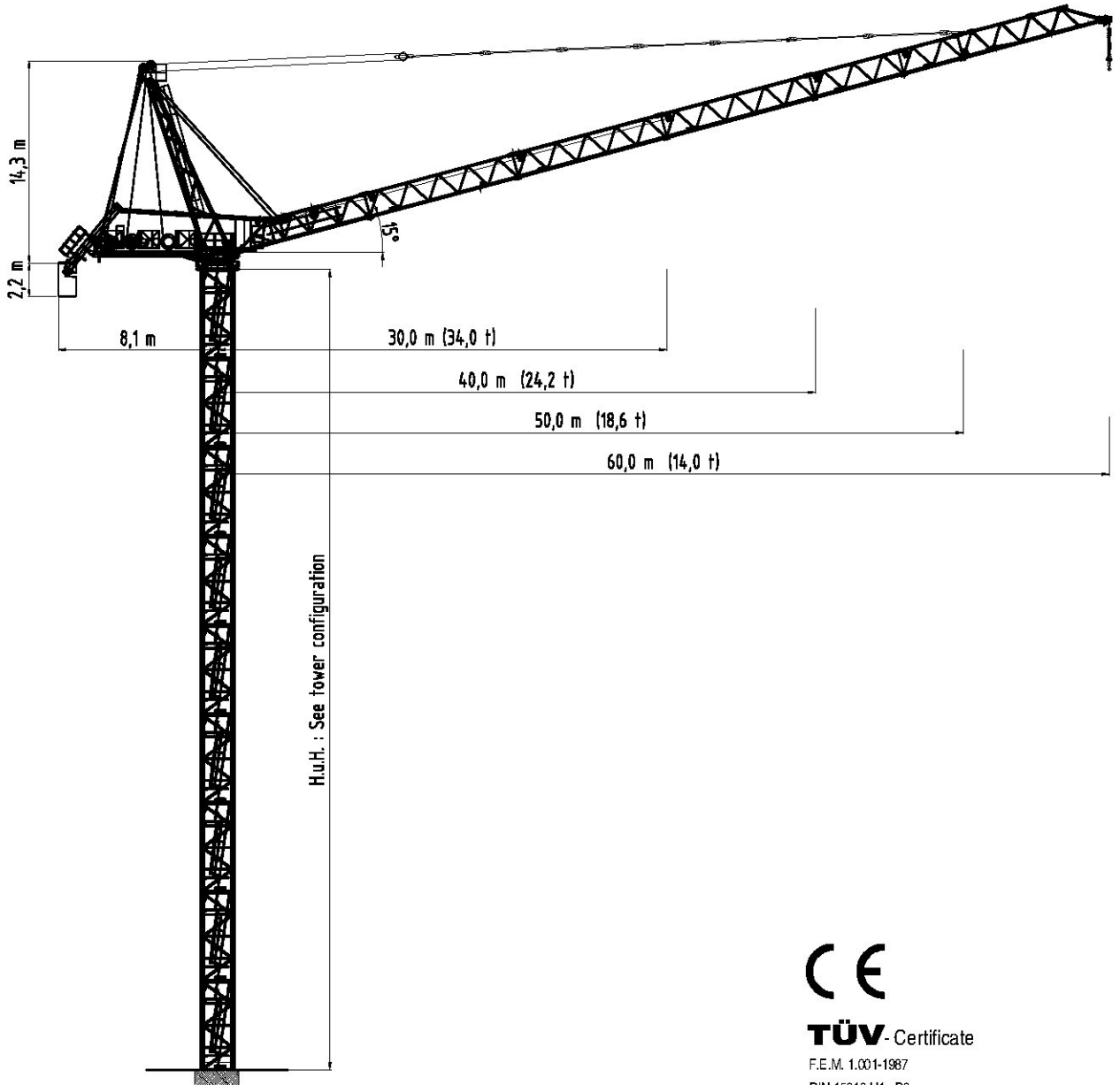


BN 880-30/60 F.I.C

1/2 - Fall



TÜV-Certificate

F.E.M. 1.001-1987

DIN 15018 H1 - B3

Subject to modification without prior notice
 Edition Jan. 2009

Luffing Crane BN 880-50

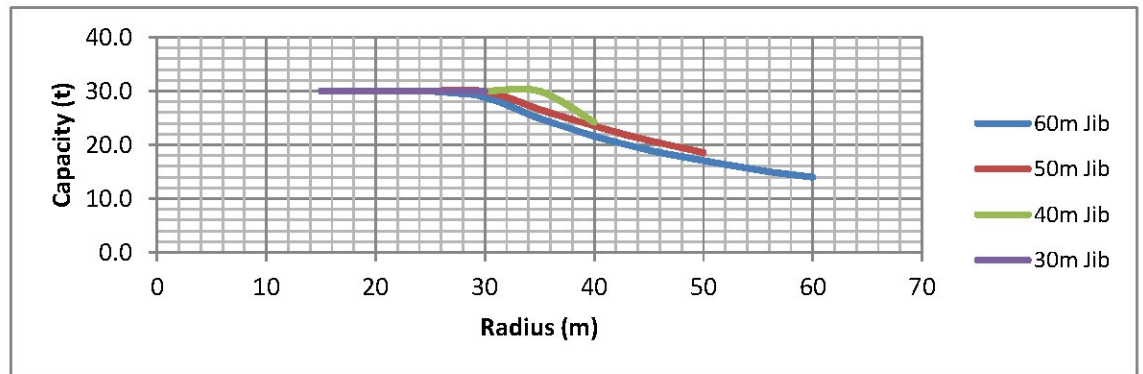
BN 880-30/60 F.I.C

1/2 - Fall

| Radius and Capacity

1-Fall

Jib		max. Capacity		$m \times t$									
m	Fall	t	m	15.0	20.0	25.0	30.0	35.0	40.0	45.0	50.0	55.0	60.0
60.0	1	30.0	28.9	30.0	30.0	30.0	28.9	24.9	21.6	19.0	17.1	15.3	14.0
50.0	1	30.0	31.5	30.0	30.0	30.0	30.0	26.6	23.5	20.8	18.6		
40.0	1	30.0	36.8	30.0	30.0	30.0	30.0	30.0	24.2				
30.0	1	30.0	30.0	30.0	30.0	30.0	30.0						



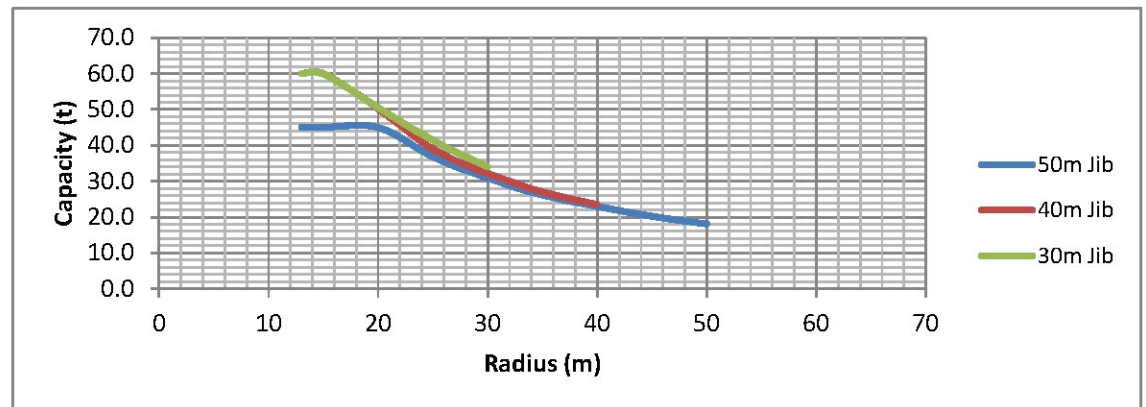
BN 880-30/60 F.I.C

1/2 - Fall

| Radius and Capacity

2-Fall



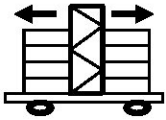
Jib		max. Capacity		$m \times t$									
m	Fall	t	m	15.0	20.0	25.0	30.0	35.0	40.0	45.0	50.0	55.0	60.0
50.0	2	45.0	20.7	45.0	45.0	36.8	30.8	26.1	23.0	20.2	18.1		
40.0	2	60.0	16.3	60.0	50.3	38.9	32.2	27.0	23.5				
30.0	2	60.0	17.3	60.0	50.5	41.3	34.0						



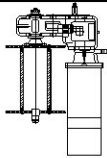
BN 880-30/60 F.I.C

1/2 - Fall

| Speed

Speed	480 V			
	60 Hz			
	Motor	122.0 kW	3 x 9.0 kW	4 x 10.8 kW
	Speed	2.5 m	0.67 rpm	30 m/min

| Power

Hoist Unit		180.0 (320 kW / 400 kVA)
------------	---	--------------------------

| Counterweight

60 m Jib	115.0 t
30 m Jib	95.0 t

BN 880-30/60 F.I.C

1/2 - Fall

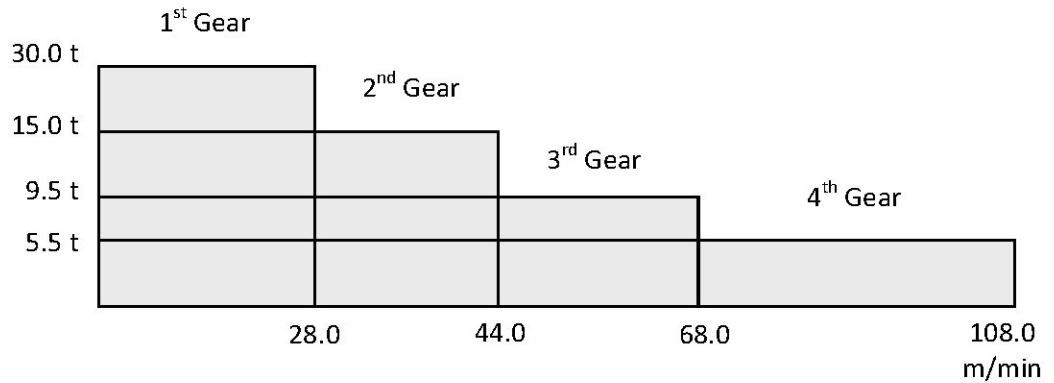
| Hoist Unit (150 S12.5 L650)

Hoist Unit 150 S12.5 L650

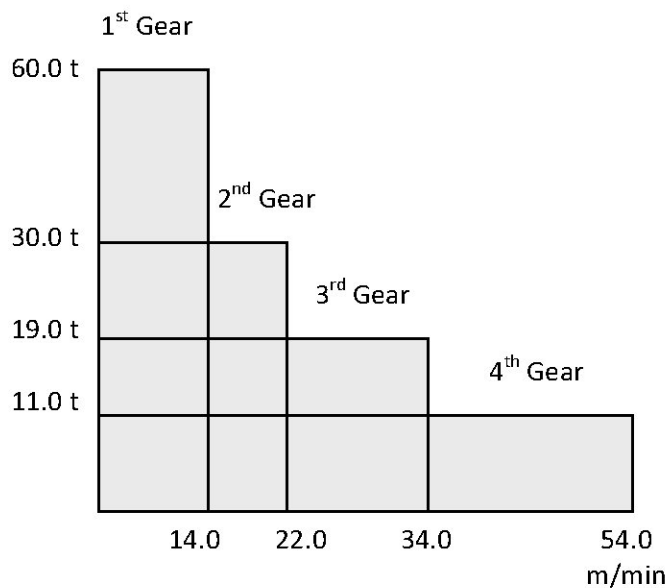
180 kW/60Hz (150 kW/50Hz) AC Slipring motor with 4-step Gearbox (remote control) eddy current brake for precision hoisting with reduction of 1:10.

Equipment: double shoe brake with automatic adjustment and brake lining wear and tear control, control cabinet – contactor controlled, (PLC control by request) separate resistor cabinet, hoist limit switch grooved drum for hoist rope Ø46 mm diameter, on erection frame ready for operation.

1 - Fall / max. Hook height 650.0 m

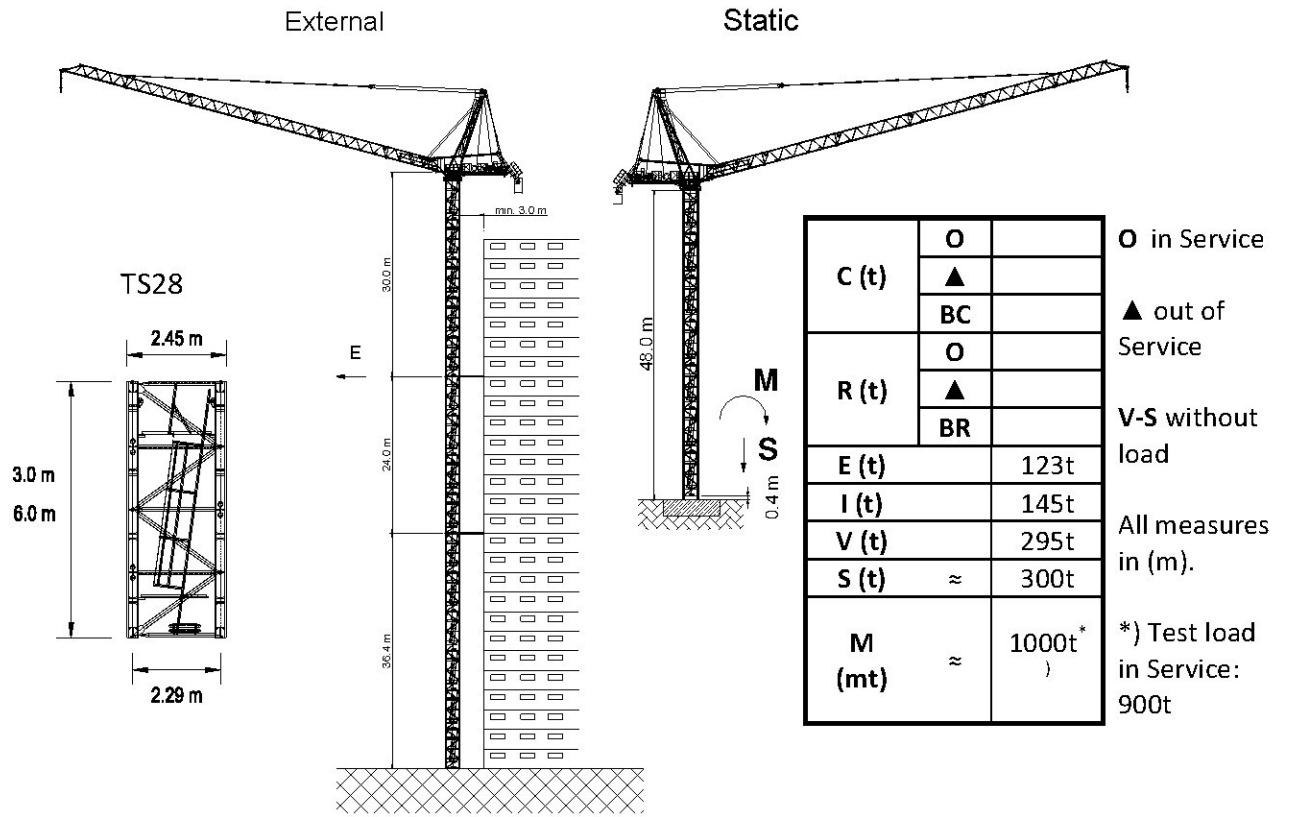


2 - Fall / max. Hook height 325.0 m

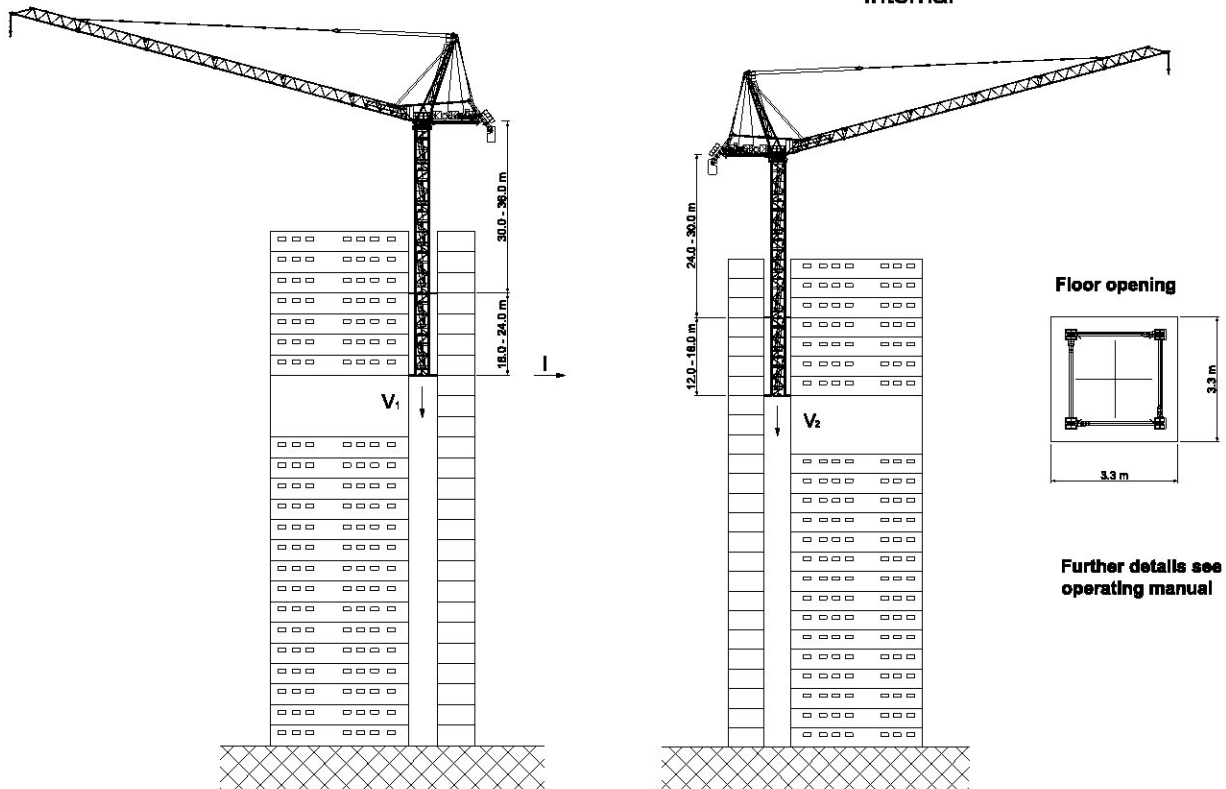


BN 880-30/60 F.I.C

1/2 - Fall



Internal



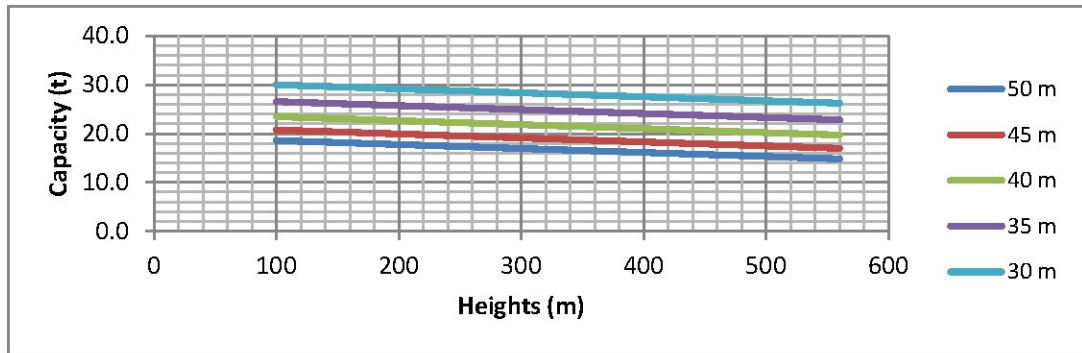
BN 880-30/60 F.I.C

1/2 - Fall

| Lifting Capacity over 100,0m Hook under Height

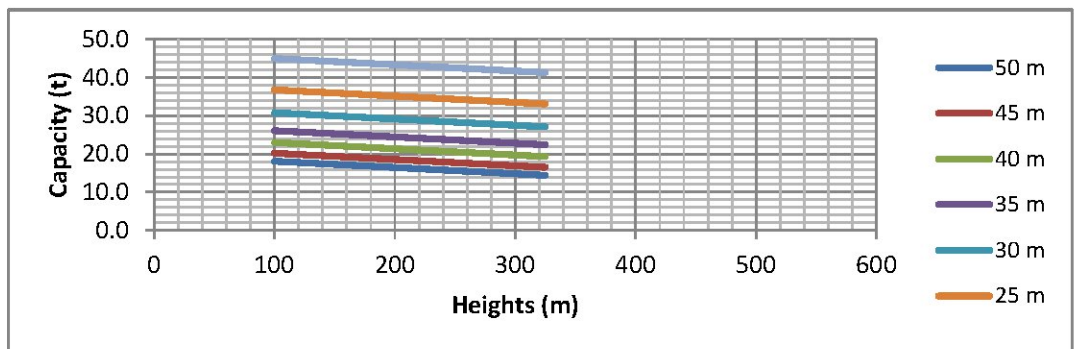
1-Fall / 50.0 m Jib Length

Height Radius	100	200	300	400	500	560
50 m	18.600	17.780	16.960	16.140	15.320	14.828
45 m	20.760	19.940	19.120	18.300	17.480	16.988
40 m	23.470	22.650	21.830	21.010	20.190	19.698
35 m	26.580	25.760	24.940	24.120	23.300	22.808
30 m	30.000	29.180	28.360	27.540	26.720	26.228



2-Fall / 50.0 m Jib Length

Height Radius	100	200	300	325
50 m	18.100	16.460	14.820	14.410
45 m	20.200	18.560	16.920	16.510
40 m	23.000	21.360	19.720	19.310
35 m	26.100	24.460	22.820	22.410
30 m	30.800	29.160	27.520	27.110
25 m	36.800	35.160	33.520	33.110
20 m	45.000	43.360	41.720	41.310



LUFFING CRANE

Nadelauslegerkran / Grues à flèche relevable
Gru con braccio a volata variabile

BN 880-30/60 F.I.C

1/2 - Fall

Luffing Crane BN 880-50