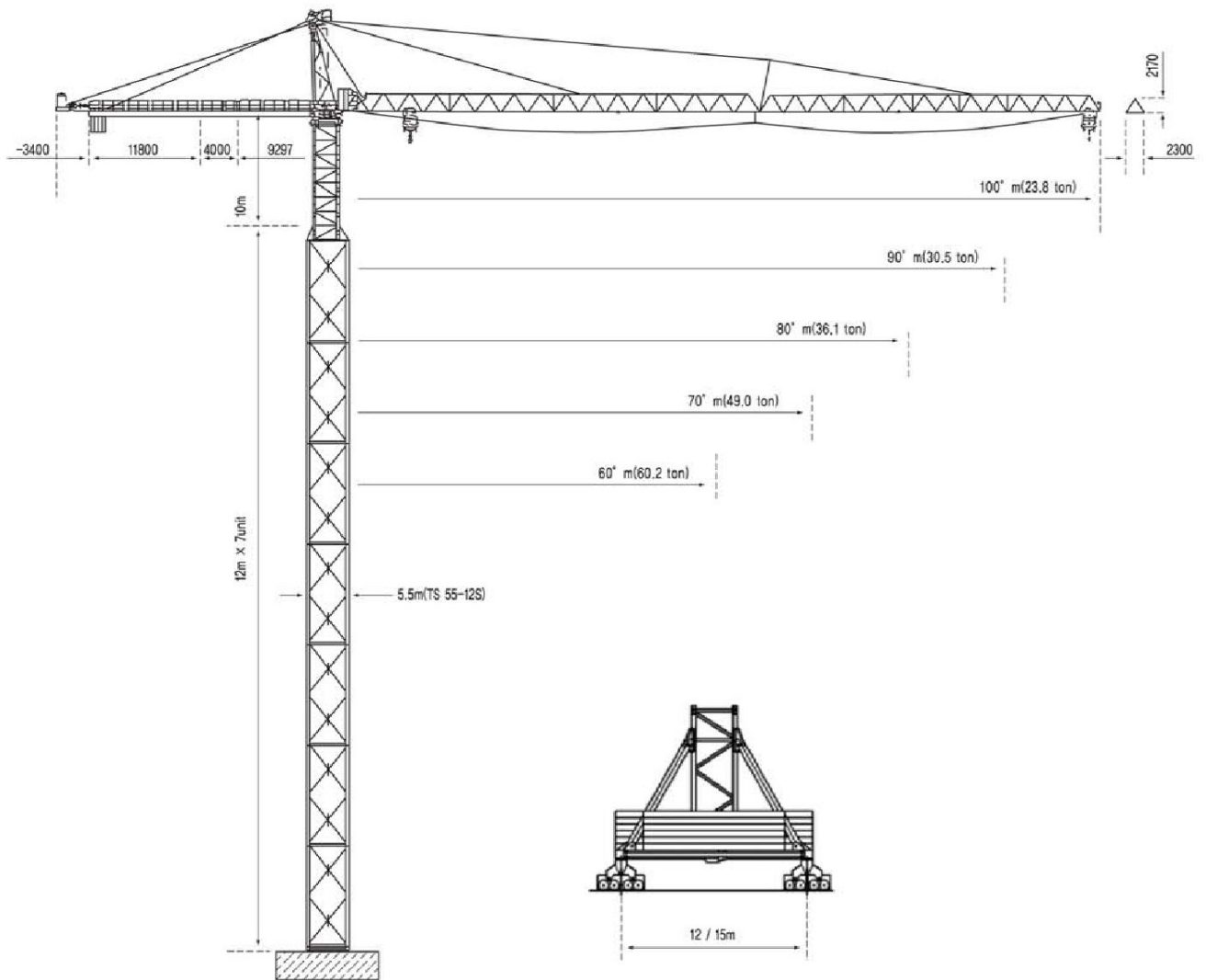


TOWER CRANE

BK 4000-35/100

2/6 fall



Subject to modification without prior notice
Edition April 2010



Tuv_Certificate

F.E.M. 1.001-1987
DIN 15018H1-B3

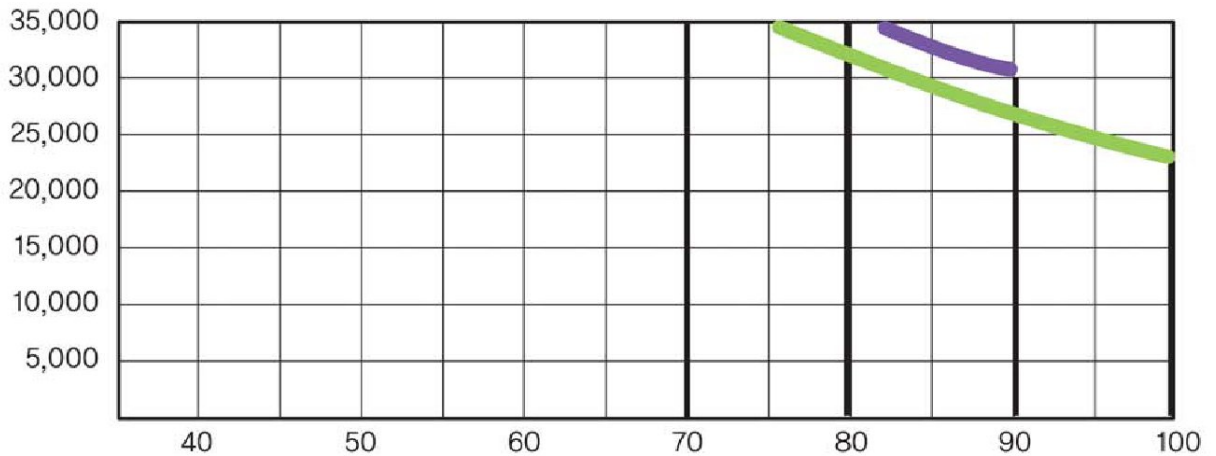
TOWER CRANE

BK 4000-35/100

2/6 fall

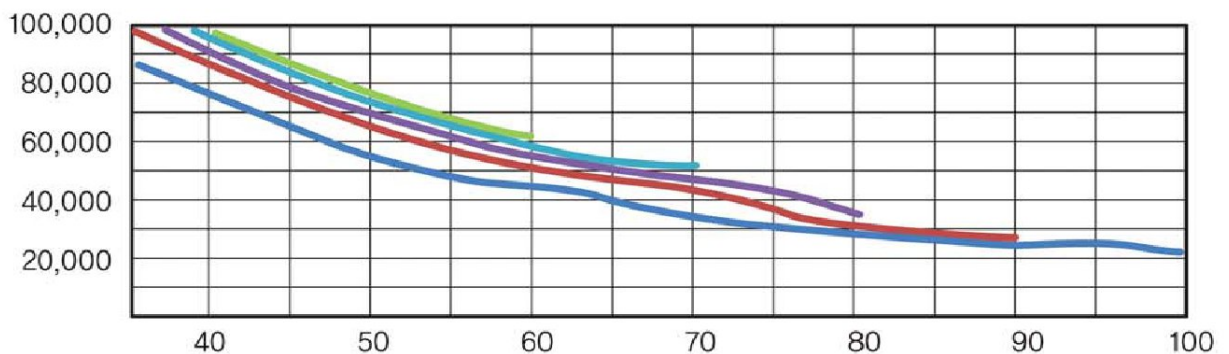
2-Fall

jib [m]	Max. Capacity		[m] × [m]									
	[t]	[m]	55	60	65	70	75	80	85	90	95	100
100	35.0t	75.0	35.0	35.0	35.0	35.0	35.0	30.8	28.6	26.1	24.9	23.8
90	35.0t	80.0	35.0	35.0	35.0	35.0	35.0	35.0	32.8	30.5		
80	35.0t	80.0	35.0	35.0	35.0	35.0	35.0	35.0				
70	35.0t	70.0	35.0	35.0	35.0	35.0						
60	35.0t	60.0	35.0	35.0								



6-Fall

jib [m]	Max. Capacity		[m] × [m]									
	[t]	[m]	35	60	65	70	75	80	85	90	95	100
100	100.0t	30.0	87.2	46.0	42.2	37.2	35.0	29.9	27.7	25.2	24.0	22.9
90	100.0t	35.0	100.0	53.8	48.1	46.1	40.3	33.4	31.9	29.5		
80	100.0t	35.4	100.0	55.7	54.3	50.2	45.9	36.1				
70	100.0t	36.8	100.0	57.4	55.2	52.0						
60	100.0t	38.0	100.0	60.2								

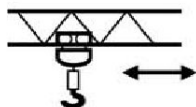

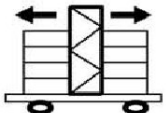


TOWER CRANE

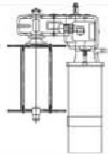
BK 4000-35/100

2/6 fall

| Speed

Speed	480 V			
	60 Hz			
	Moto	35kw	6×13,0kw	22kw
	Speed	0-62.0m/min	6.57rpm	24.0m/min

| Power

Hoist Unit		340 (408kw / 241 kva)
------------	---	-----------------------

| Counterweight

All Lengths	60 ° t
-------------	--------

| Hoist unit 340 S12.5 L400

Hoist Unit 340 S12.5 L780

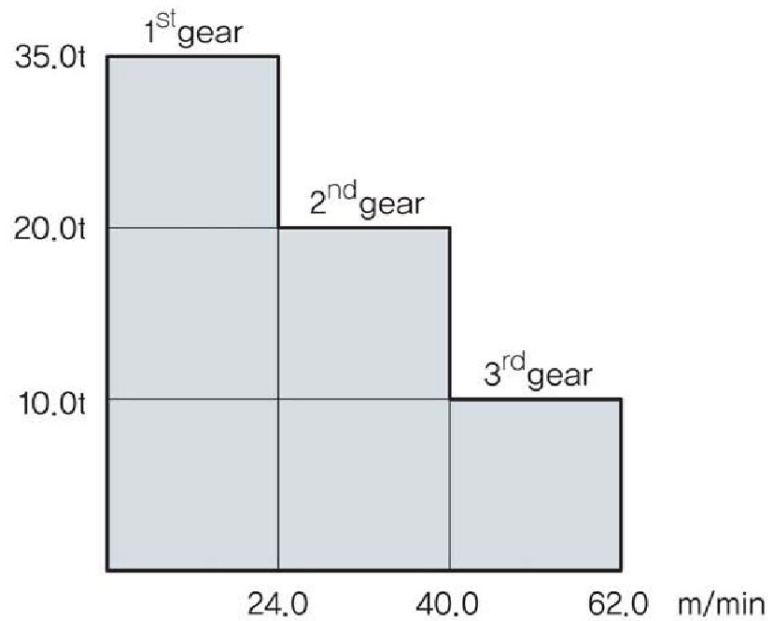
340 kW AC Slipring motor with 3-step gearbox (remote control) eddy current brake for precision hoisting with reduction of 1:10.

Equipment: double shoe brake with automatic adjustment and brake lining wear and tear control, control cabinet – contactor controlled, (PLC control by request) separate resistor cabinet, hoist limit switch grooved drum for hoist rope $\varnothing 34mm$ diameter, on erection frame ready for operation



Max. Hook height

2-Fall / Max. Hook height = 130.0m



6-Fall / Max. Hook height = 130.0m

