



ISO 9001 : 2000  
ISO 14001 : 2004  
KSA 9001 : 2001



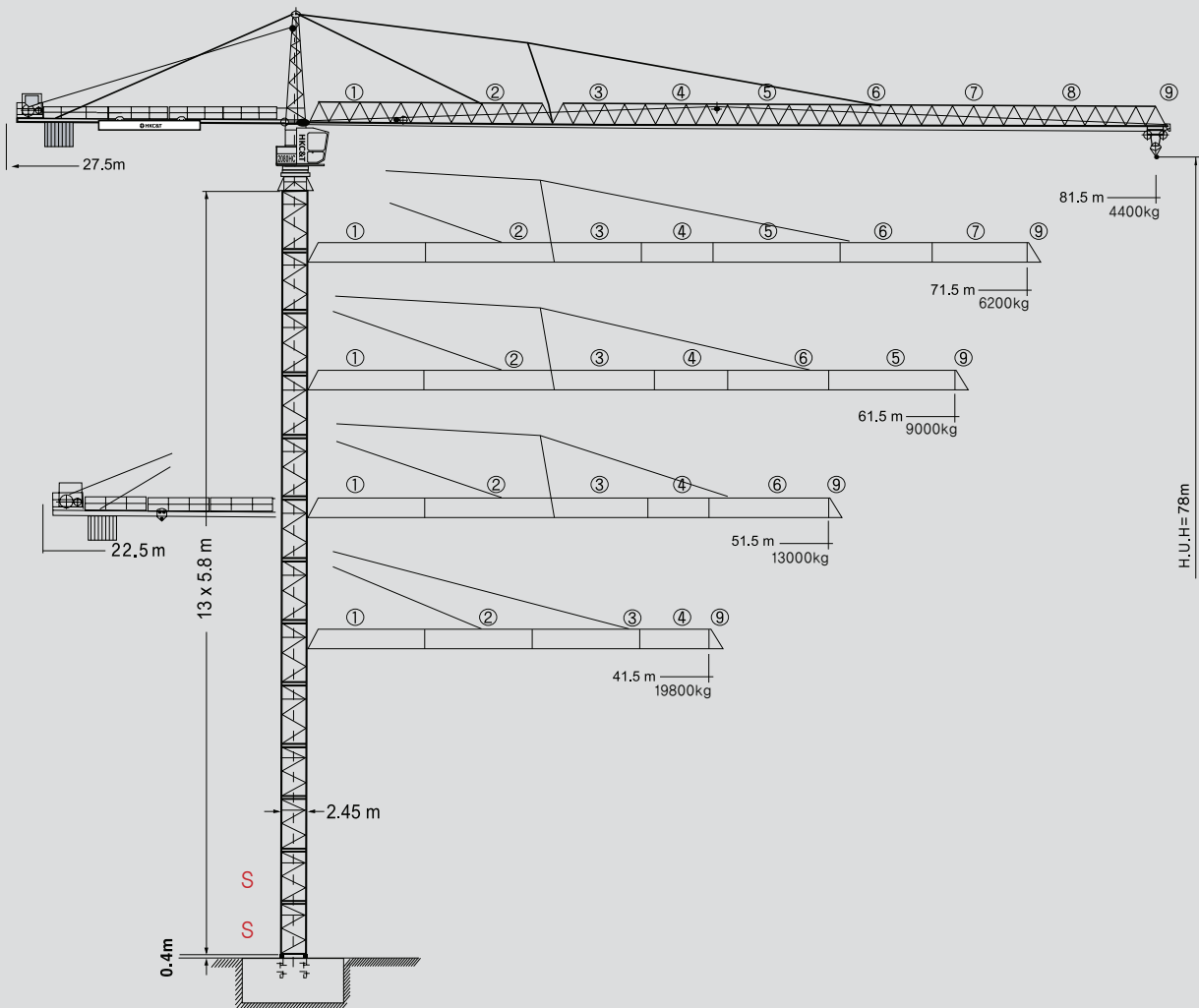
HanKook Crane & Tech

HanKook Crane & Tech

HanKook Crane & Tech

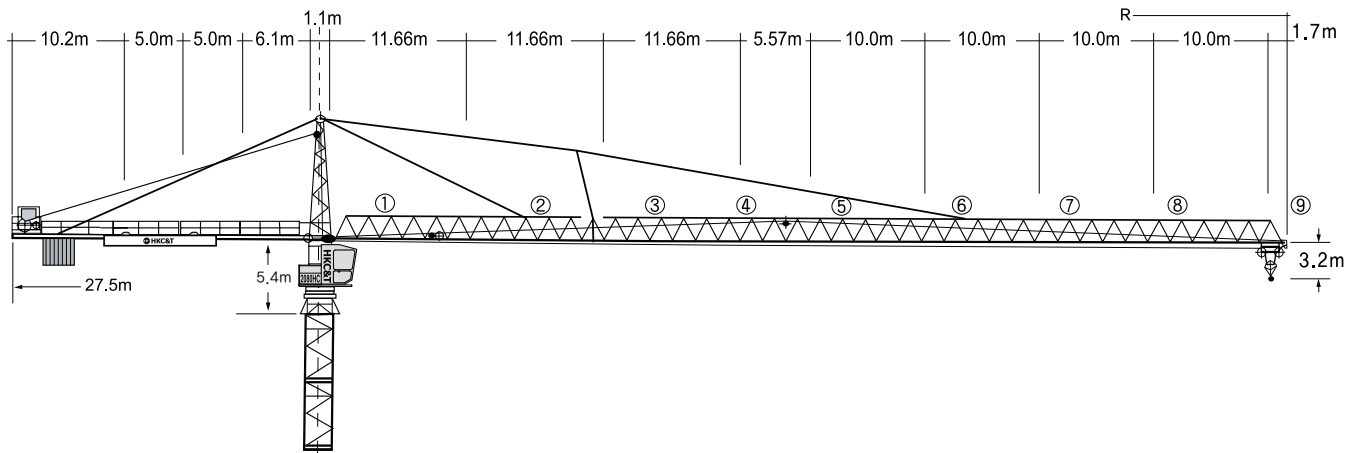
HanKook Crane & Tech

# 2080HC 20 TOWER CRANE



# HANKOOK CRANE & TECH

# 2080HC 20 TOWER CRANE



## Hoisting height

Number of tower section	Hoisting height	
	m	m
0	2.6	10.7
1	S 8.4	S 16.5
2	S 14.2	S 22.3
3	20.0	28.1
4	25.8	33.9
5	31.6	39.7
6	37.4	45.5
7	43.2	51.3
8	49.0	57.1
9	54.8	62.9
10	60.6	68.7
11	66.4	74.5
12	72.2*	80.3*
13	78.0*	-

--	--

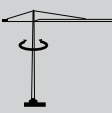
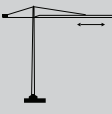
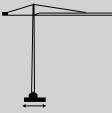
S = Tower section reinforced  
 \* = Lower guide section after erection

# Technical data

## Radius and capacity (Hoist 90kW)

Length of jib Radius(m)	MAX Capacity m/kg	Radius and capacity													
		21,0	25,0	29,0	33,0	37,0	41,5	47,0	51,5	57,0	61,5	67,0	71,5	77,0	81,5
81,5(R=83,7)	4,0-23,5 20000	20000	18650	15820	13670	11980	10480	9030	8070	7110	6450	5760	5280	4770	4400
71,5(R=73,7)	4,0-26,5 20000	20000	20000	18080	15660	13760	12060	10430	9350	8260	7520	6740	6200		
61,5(R=63,7)	4,0-30,6 20000	20000	20000	20000	18420	16220	14260	12360	11120	9860	9000				
51,5(R=53,7)	4,0-35,0 20000	20000	20000	20000	20000	18840	16590	14730	13000						
41,5(R=43,7)	4,0-37,5 20000	20000	20000	20000	20000	20000	19800								

## Speeds

	0,6 sl./min	4X6,3 kW
	10,0/21,0/65,0/125,0 m/min	5,5 kW
	25,0m/min	4X7,5 kW




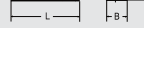


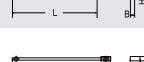

※Total motor output

151(131)kW

Hoist gear		Gear	kg	m/min
90kW Elmag, WSB		1	20000	1,5/22,0
		2	7300	2,7/49,0
		3	2200	6,67/98,0
65kW Elmag WSB		1	20000	0,7/7,4
		2	11000	1,6/26,4
		3	4500	3,3/50,0
		1	12000	1,4/14,8
		2	5350	3,2/52,9
		3	2000	6,7/100,0



# 2080HC 20 Packing List

Item	Quantity	Description	This list cannot be used for the calculation of the smallest transport volume.	Length m	Width m	Height m	Unit weight kg	Total weight kg
1	1	Slewing platform cpl.		6,82	2,90	3,25	15637	15637
2	1	Operator cabin		4,10	2,08	2,45	970	970
3	1	Tower head		9,40	1,78	1,91	4950	4950
4	1	Counter-jib head		10,30	2,42	1,05	3867	3867
5	1	Counter-jib heel section		6,34	1,93	1,05	2350	2350
6	2	Intermediate counter-jib section		5,22	1,76	1,05	2085	4170
7	1	Jib heel section		12,03	1,74	2,30	① 3120	3120
8	1	Intermediate jib section (②, ③, ④, ⑤, ⑥, ⑦, ⑧)		12,02	1,74	1,98	② 3730	3730
	6,00			1,74	1,98	④ 1420	1420	
	12,02			1,74	1,96	③ 2690	2690	
	10,40			1,74	1,96	⑤ 2020	2020	
	10,40			1,74	1,96	⑥ 2360	2360	
	10,40			1,74	1,96	⑦ 1700	1700	
1	1	Jib head		1,86	1,74	1,96	370	370
10	1	Trolley and hook		2,40	2,14	1,40	1177 1000	2177
11	1	Hoist gear frame		2,56	2,28	1,64	5400	5400
12	1	Jib gantry I		8,20	0,48	1,41	780	780
13	13	Tower section		6,28	2,45	2,45	6400	83200
14	1	Guide section cpl., split		12,39	2,75	1,58	9070	9070
15	1	Hydraulic unit, supporting and climbing cross members		2,10	1,10	1,00	1100	1100
16	1	Crate with small parts, ropes		2,00	1,00	1,00	1000	1000
<b>Undercarriage</b>								
17	4	Pivot for wheel box		1,60	0,72	1,48	1470	5880
18	4	Rail bogie with drive		1,45	0,82	0,72	760	3040
19	4	Rail bogie without drive		1,30	0,40	0,72	760	3040
20	1	Support arm long		7,32	0,92	0,93	2330	2330
21	2	Support arm short		4,45	0,77	0,77	800	1600
22	4	Border support		9,30	0,14	0,14	510	2040
23	4	Support strut		6,98	0,26	0,34	1140	4560
24	1	Undercarriage tower section		6,61	2,44	2,44	7930	7930



Head Office : 176 Eunam-ri, Chopyeong-myeon, Jincheon-gun, Chungbuk, Korea (365-852) TEL,+82-43-838-3311 FAX,+82-43-838-3361  
 Seoul Office : 197-28, 13F E&C Venture Dream Tower VI, Guro-dong Guro-Gu, Seoul, Korea TEL,+82-2-830-0040 FAX,+82-2-830-0065  
 Viet Nam : Road 25B, Nhon Trach 2 Industrial Park, Nhon Trach District, Dong Nai Province TEL,+84-61-356-9500 FAX,+84-61-356-9501  
 Gulf Branch : P.O.Box 18379, JAFZ Dubai, U,A,E TEL,+971-4-8815727 FAX,+971-4-8815728  
 Qatar Office : P.O.Box 55654, Doha, Qatar TEL,+974-466-1326 FAX,+974-465-0049