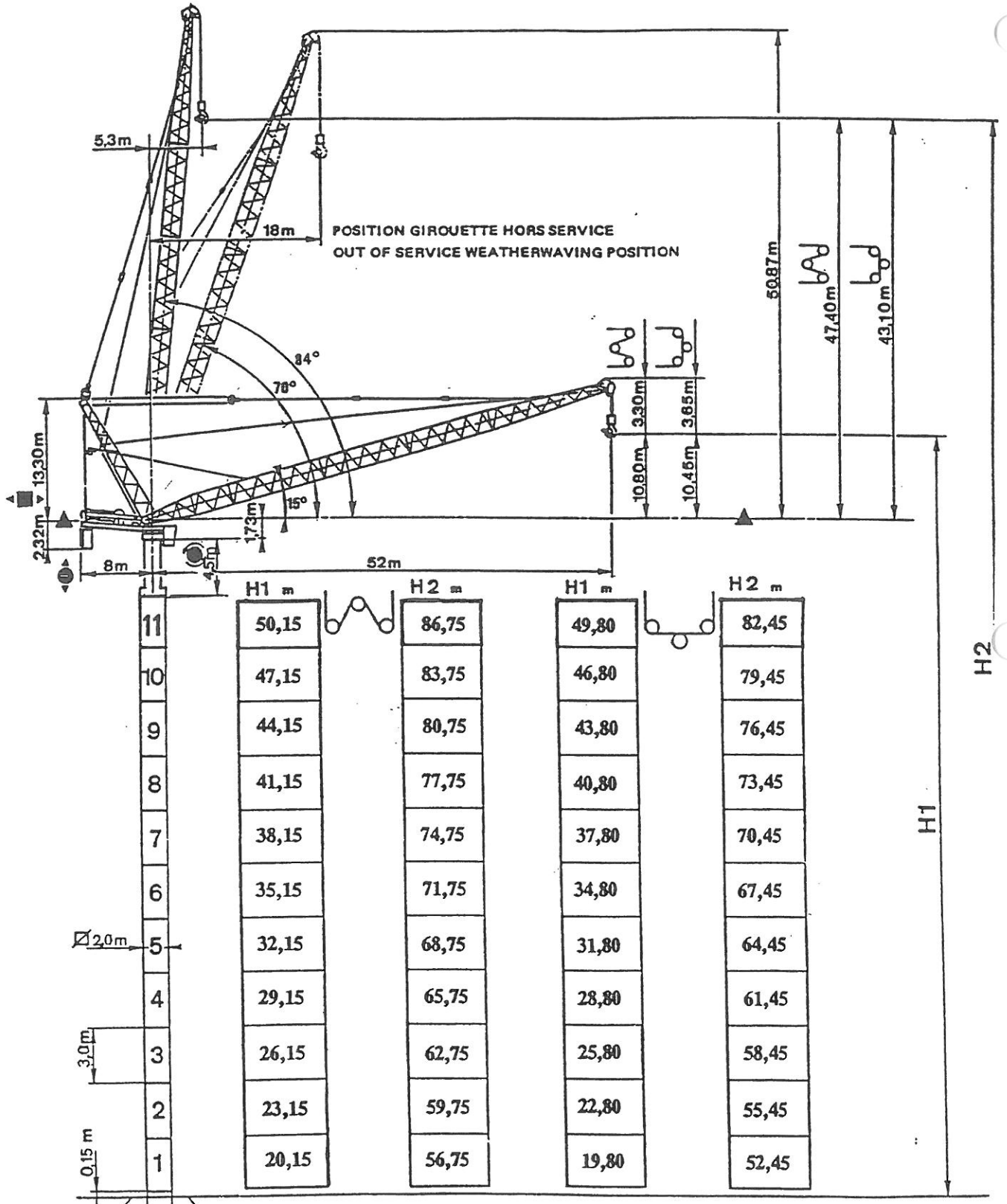


MR 300

POTAIN 

DA.7.005.04 1/4



2A.7.005.04 2/4

F2 ↑ F3

F = Réactions-Eckdrücke-Reactions-Reacciones-

F2	● 156 t	■ 223 t
F3	● 98 t	■ 171 t

- REACTIONS EN SERVICE
IN SERVICE REACTIONS
- REACTIONS EN GIROUILLE
WEATHERWAVING REACTIONS

	H1 m	H2 m	H1 m	H2 m
11	50,15	86,75	49,80	82,45
10	47,15	83,75	46,80	79,45
9	44,15	80,75	43,80	76,45
8	41,15	77,75	40,80	73,45
7	38,15	74,75	37,80	70,45
6	35,15	71,75	34,80	67,45
5	32,15	68,75	31,80	64,45
4	29,15	65,75	28,80	61,45
3	26,15	62,75	25,80	58,45
2	23,15	59,75	22,80	55,45
1	20,15	56,75	19,80	52,45