

FAVELLE FAVCO

the Cranemakers



M760D TOWER CRANE

FOR OVER 30 YEARS, AUSTRALIAN MADE FAVELLE FAVCO CRANES HAVE BEEN AT THE LEADING EDGE OF HIGH RISE CONSTRUCTION AROUND THE WORLD.

FIRST IN AUSTRALIA, THEN AT THE WORLD TRADE CENTRE IN NEW YORK IN 1967, TO SINGAPORE, TAIWAN AND THE UK IN 1990, FAVELLE FAVCO CRANES HAVE GUARANTEED ONE VITAL EQUATION: POWER + SPEED + RELIABILITY + PERFORMANCE.

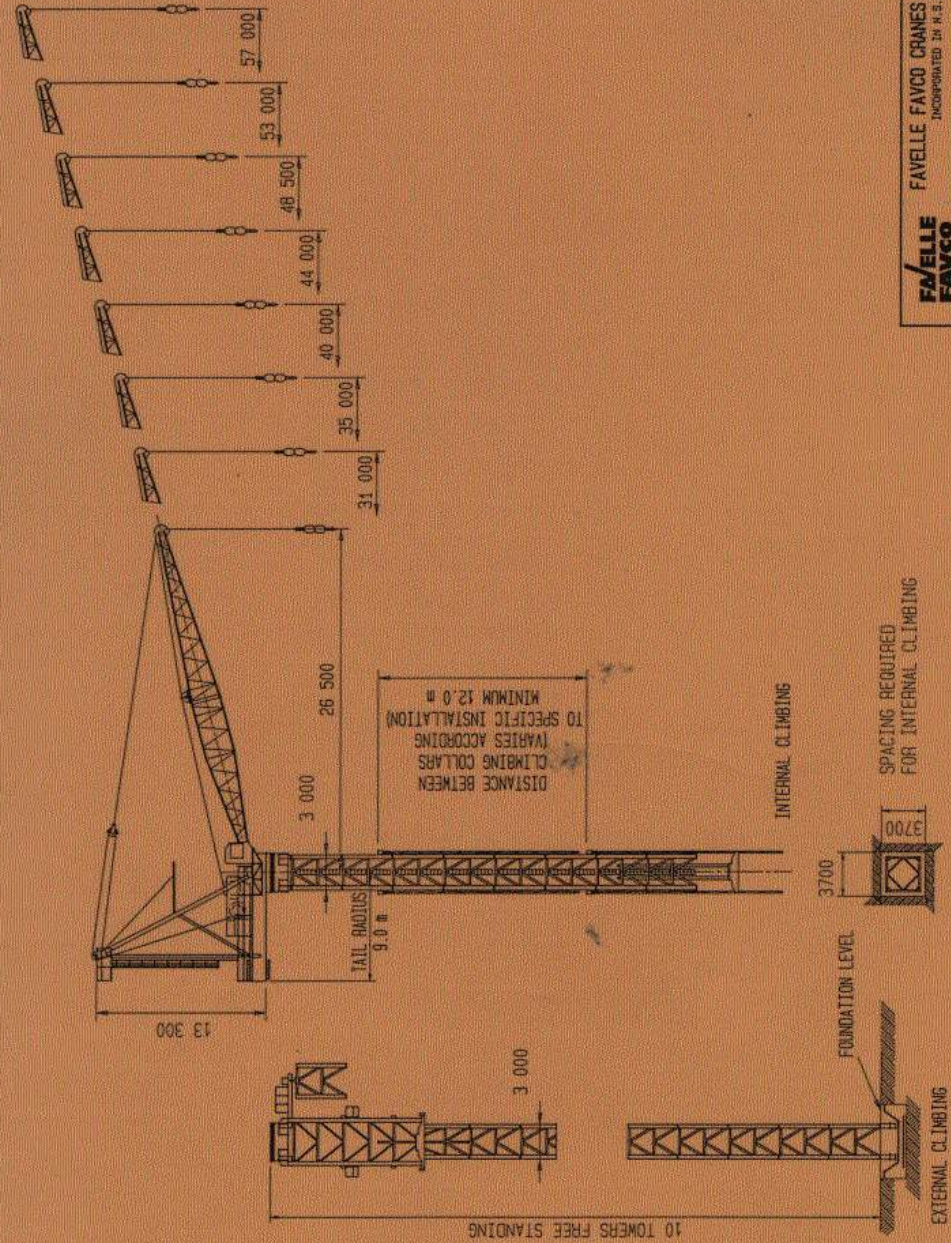
FAVELLE FAVCO CRANES ARE DESIGNED AND MANUFACTURED TO EXACTING SPECIFICATIONS TO PROVIDE DURABILITY, RELIABILITY, HIGH PERFORMANCE, AND SAFETY WHICH IS SECOND TO NONE.

THEY COMBINE ADVANCED TECHNOLOGY WITH STATE OF THE ART COMPUTER DESIGN AND OVER 30 YEARS OF INTERNATIONAL EXPERIENCE.

WHEN AUSTRALIAN AND INTERNATIONAL PROJECTS CALL FOR A CRANE WHICH CAN HANDLE A MONTHLY LIFT CAPACITY WELL BEYOND CONVENTIONAL LIMITS, THEY CONSULT FAVELLE FAVCO.

THE SUCCESS OF FAVELLE FAVCO CRANES HAS ALWAYS BEEN PERFORMANCE CAPABILITY, WHICH IS FAR BEYOND EUROPEAN AND JAPANESE COMPETITORS.

THE ESSENCE OF A FAVELLE FAVCO CRANE'S SUPERIORITY, IS ITS POWER PLANT.



FAVELLE FAVCO
FAVELLE FAVCO CRANES, PTY. LTD.
INCORPORATED IN N.S.W.

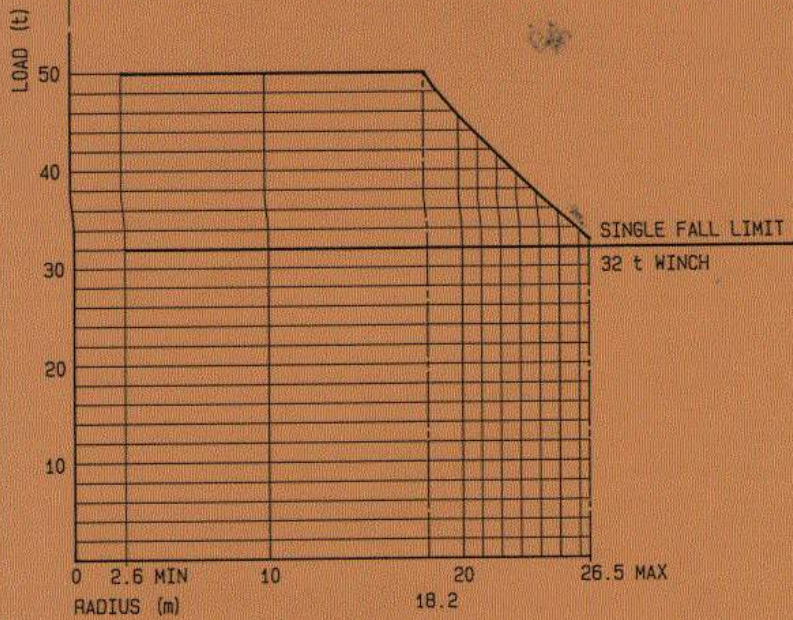
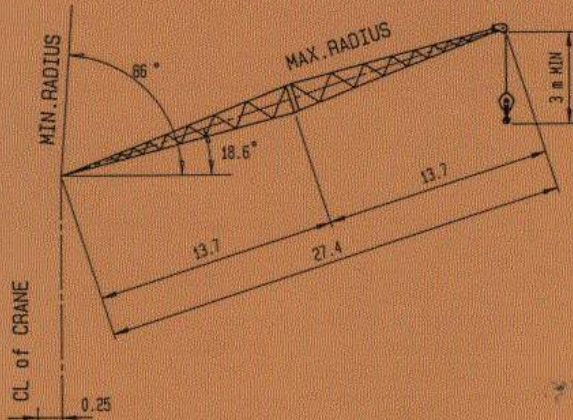
M760D TOWER CRANE

760-0018

**FAELLE
FAVCO**

LOAD CHART M760D

BOOM LENGTH 27.4 m

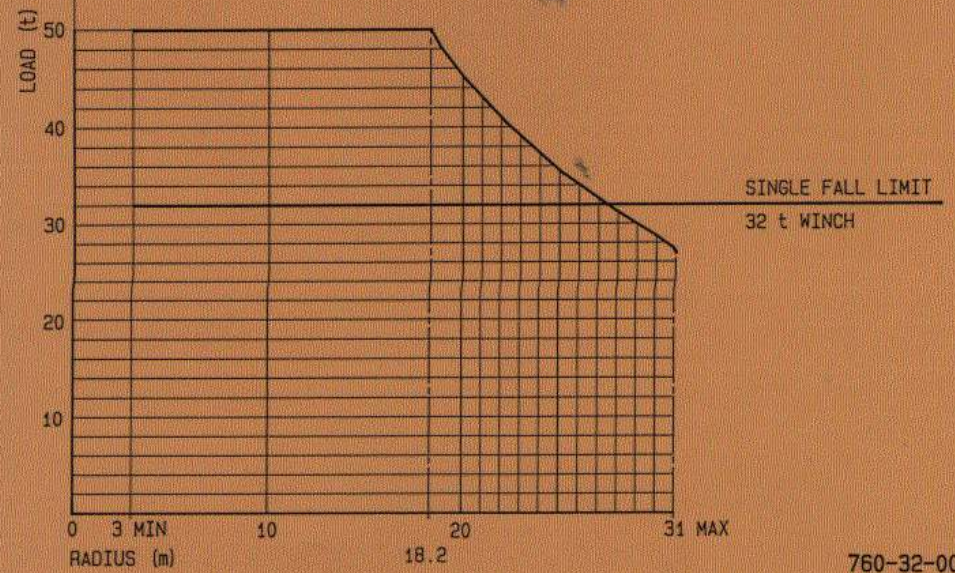
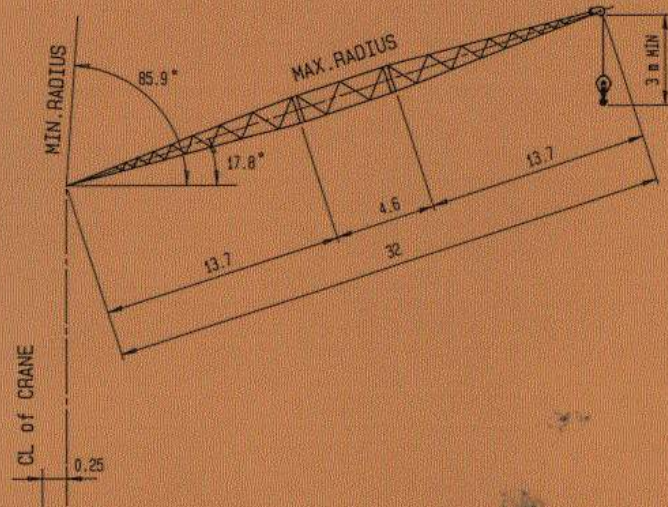


760-27-000C

**FAELLE
FAVCO**

LOAD CHART M760D

BOOM LENGTH 32 m

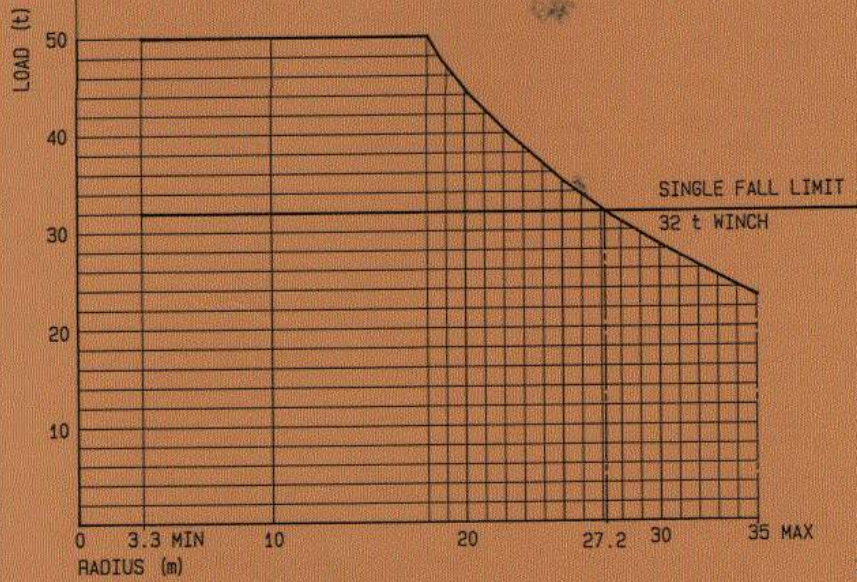
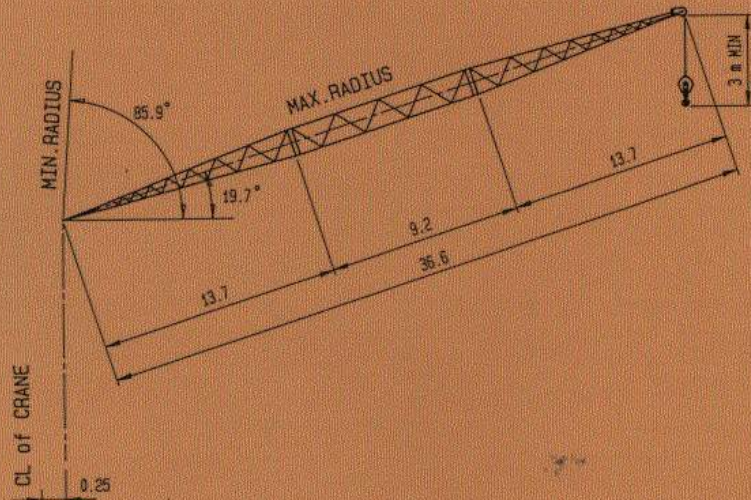


760-32-000C

**FAELLE
FAVCO**

LOAD CHART M760D

BOOM LENGTH 36.6 m

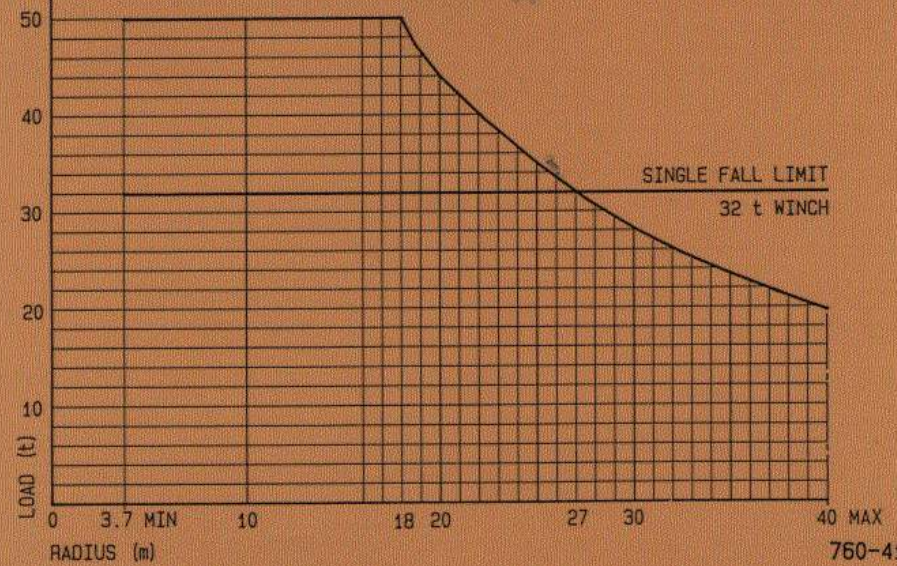
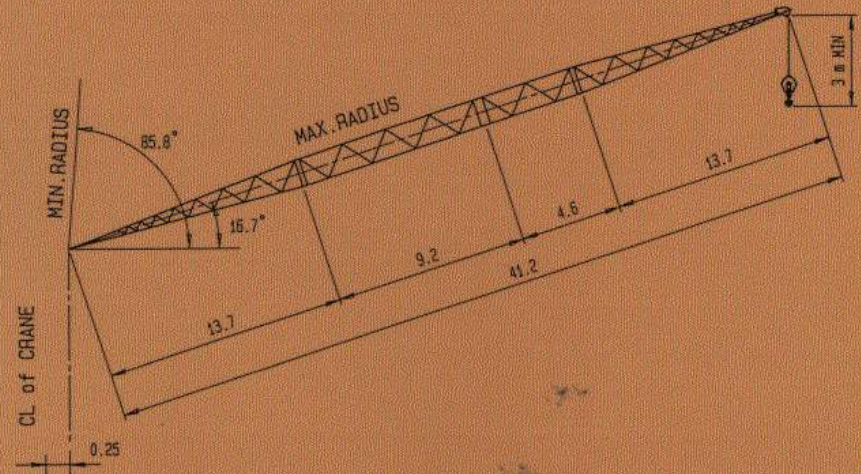


760-37-000C

**FAELLE
FAVCO**

LOAD CHART M760D

BOOM LENGTH 41.2 m

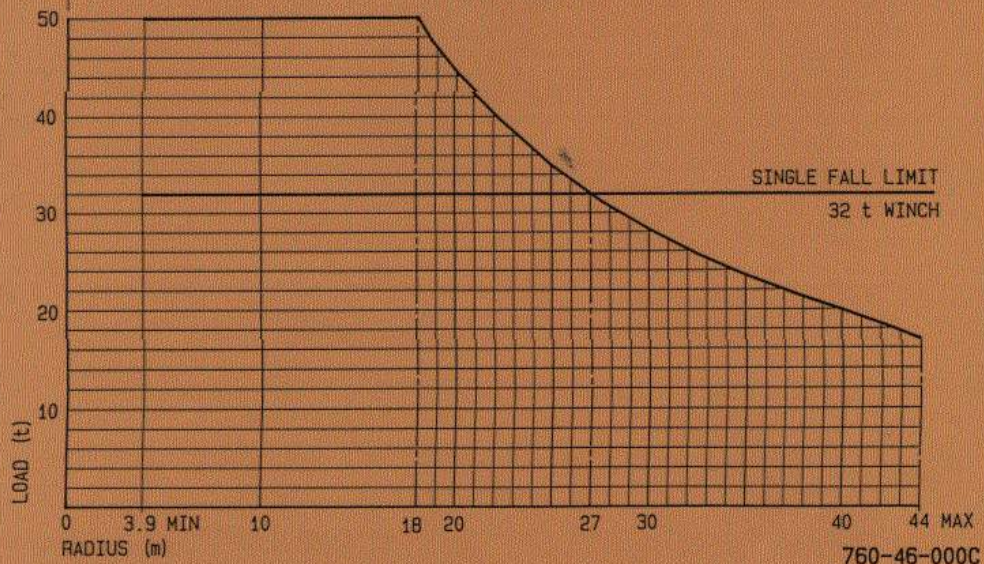
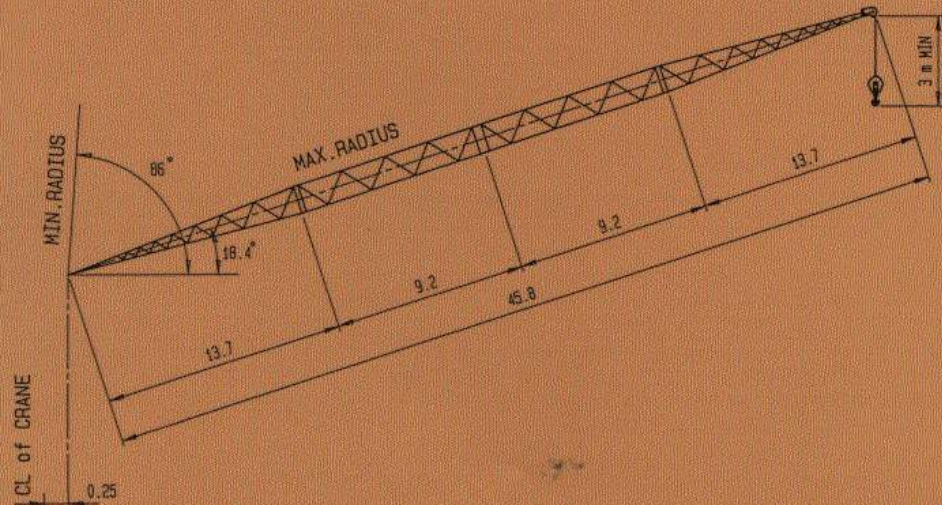


760-41-000C

**FAELLE
FAVCO**

LOAD CHART M760D

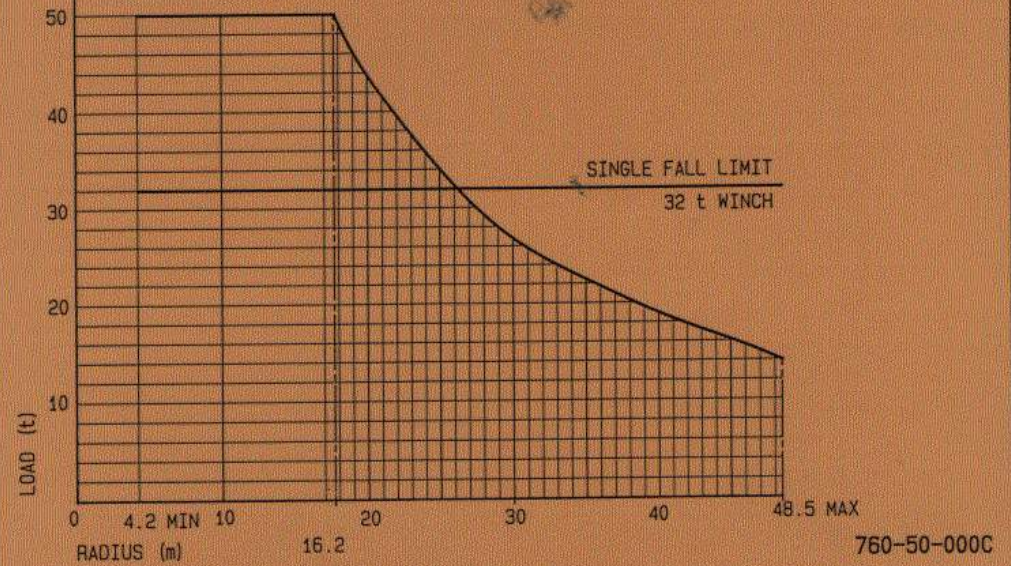
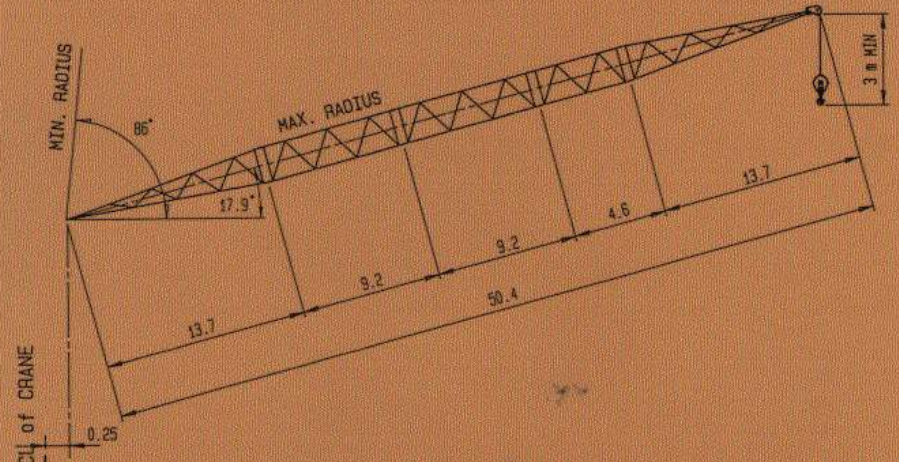
BOOM LENGTH 45.8 m



**FAELLE
FAVCO**

LOAD CHART M760D

BOOM LENGTH 50.4 m

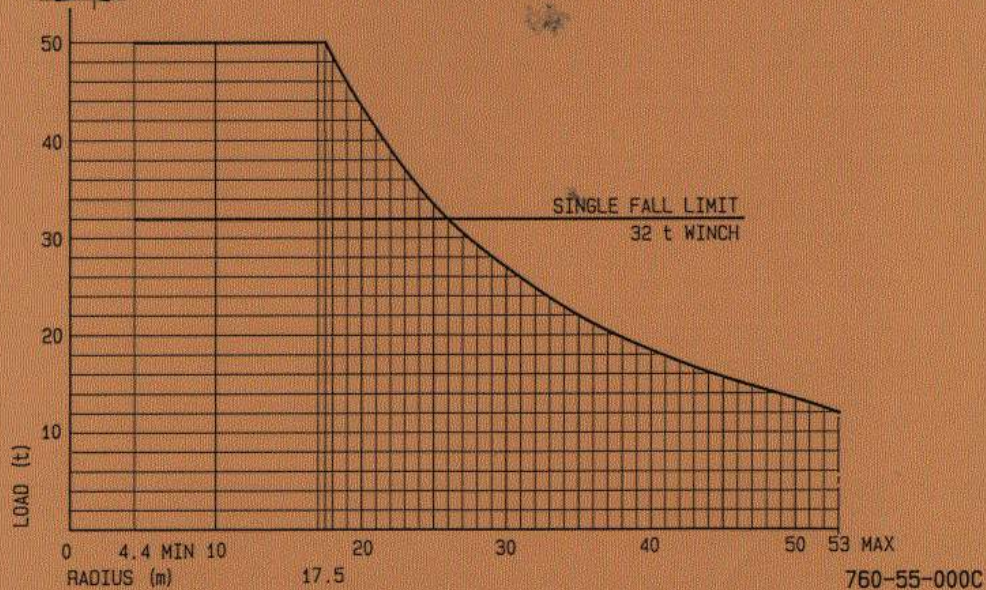
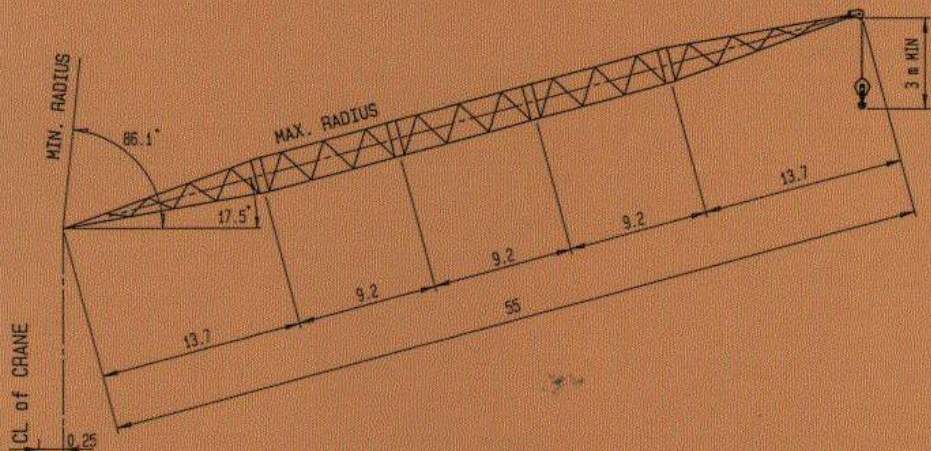


60TCW



LOAD CHART M760D

BOOM LENGTH 55 m



760-55-000C



LOAD CHART M760D

LOAD CHART M760D 27.4 m BOOM

RADIUS (m)	2.6	12.0	18.0	20.0	25.0	26.5
BOOM ANGLE	86.0	65.6	50.1	45.0	26.9	18.6
RATED LOAD (t)	50.0	50.0	50.0	45.5	35.7	33.3

LOAD CHART M760D 32.0 m BOOM

RADIUS (m)	3.0	12.0	18.0	20.0	25.0	30.0	31.0
BOOM ANGLE	85.9	69.3	56.8	52.8	40.3	23.0	17.8
RATED LOAD (t)	50.0	50.0	50.0	45.2	35.5	28.7	27.0

LOAD CHART M760D 36.6 m BOOM

RADIUS (m)	3.3	12.0	18.0	20.0	25.0	30.0	35.0
BOOM ANGLE	85.9	72.0	61.7	58.1	48.3	36.6	19.7
RATED LOAD (t)	50.0	50.0	50.0	44.5	35.2	28.5	23.7



LOAD CHART M760D

LOAD CHART M760D 41.2 m BOOM

RADIUS (m)	3.7	12.0	18.0	20.0	25.0	30.0	35.0	40.0
BOOM ANGLE	85.8	74.1	65.1	62.0	53.8	44.5	33.4	16.7
RATED LOAD (t)	50.0	50.0	50.0	44.0	35.0	28.2	23.5	19.7

LOAD CHART M760D 45.8 m BOOM

RADIUS (m)	3.9	12.0	18.0	20.0	25.0	30.0	35.0	40.0	44.0
BOOM ANGLE	86.0	75.7	68.5	65.0	57.9	50.1	41.3	30.6	18.4
RATED LOAD (t)	50.0	50.0	50.0	44.5	35.0	28.3	23.5	20.0	17.5

TAB-M760D-002



LOAD CHART M760D

LOAD CHART M760D 50.4 m BOOM

RADIUS (m)	4.2	17.7	20.0	25.0	30.0	35.0	40.0	45.0	48.5
BOOM ANGLE	86.0	70.3	67.5	61.1	54.4	47.0	38.6	28.2	17.9
RATED LOAD (t)	50.0	50.0	43.7	34.0	27.3	22.5	19.0	16.2	14.5

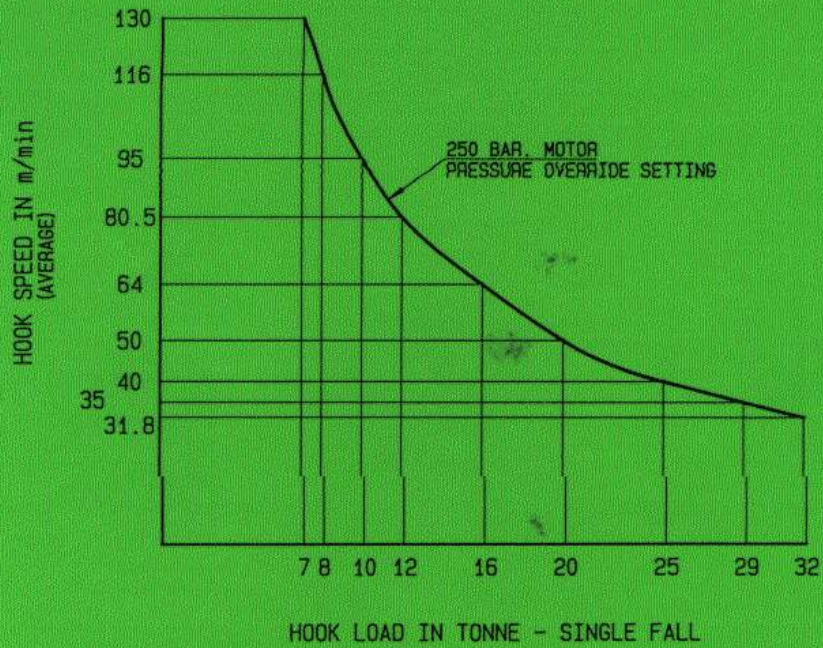
LOAD CHART M760D 55.0 m BOOM

RADIUS (m)	4.4	17.5	20.0	25.0	30.0	35.0	40.0	45.0	50.0	53.0
BOOM ANGLE	86.1	72.2	69.4	63.8	57.8	51.3	44.3	36.2	26.0	17.5
RATED LOAD (t)	50.0	50.0	43.5	33.5	27.0	22.0	18.5	15.7	13.5	12.5

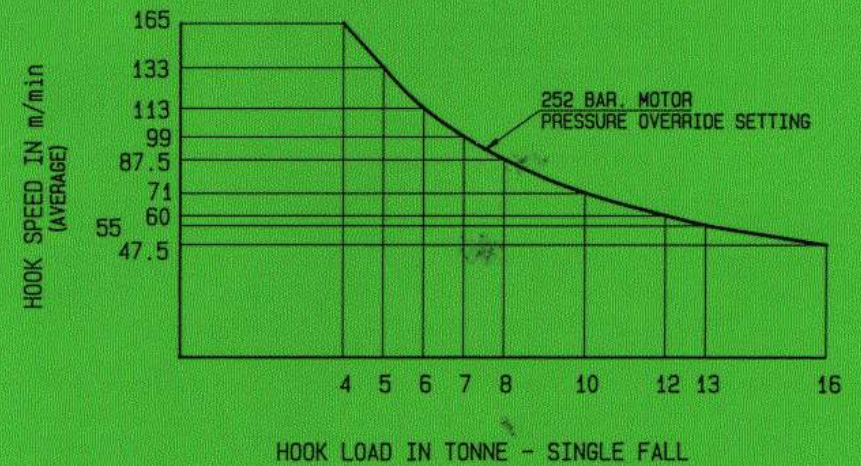
TAB-M760D-001



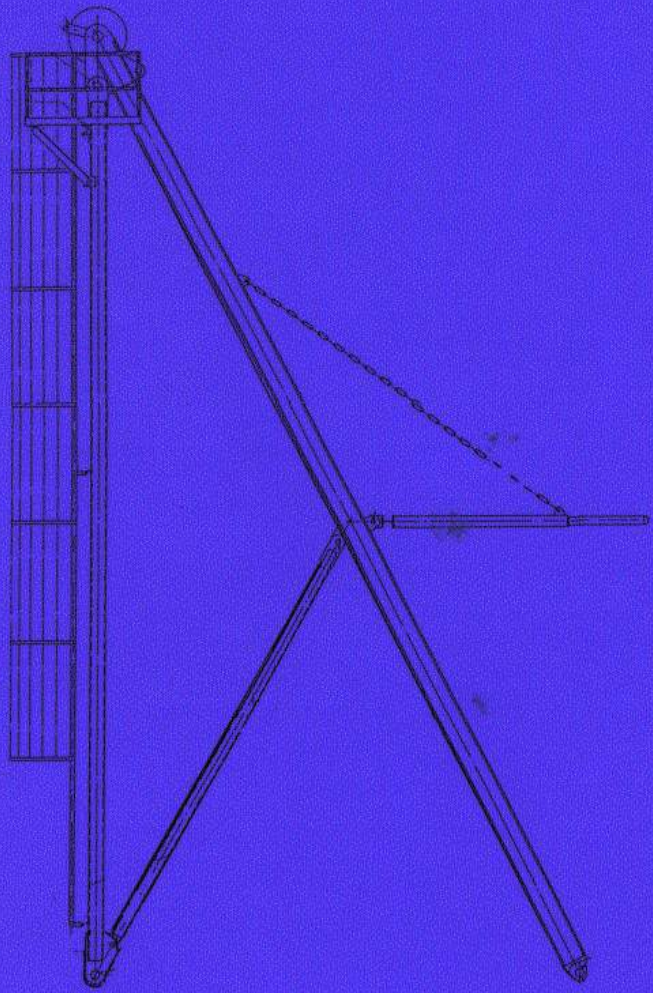
HOIST WINCH PERFORMANCE CURVE
TYPE: 760.400.32.A



OPTIONAL
HOIST WINCH PERFORMANCE CURVE
TYPE: 760.300.16.A



**FAELLE
FAVCO**



M760D MAST ASSEMBLY