

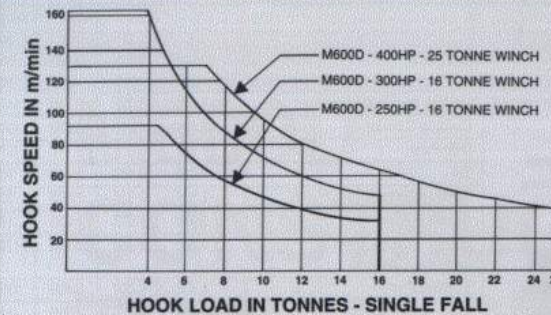
Radius & Capacity

Max. Radius (m)	Min. Radius (m)	Max. Radius (m)	Radius & Capacity (Tonne)																				
			(25 Tonne & 16 Tonne Winches & 2-Fall)																				
		50 Tonne (m)	10.0 (m)	15.0 (m)	20.0 (m)	25.0 (m)	30.0 (m)	32.5 (m)	35.0 (m)	37.5 (m)	40.0 (m)	42.5 (m)	45.0 (m)	47.5 (m)	50.0 (m)	52.5 (m)	55.0 (m)	57.5 (m)	60.0 (m)	62.5 (m)	65.0 (m)	67.5 (m)	70.0 (m)
70.0	6.2	-	25.0	21.3	17.8	15.8	13.8	12.9	12.2	11.5	10.8	10.1	9.4	8.5	7.8	7.3	6.6	5.9	5.2	4.6	4.0	3.5	3.0
65.0	6.0	-	29.7	25.5	21.7	19.1	16.5	15.4	14.4	13.5	12.6	11.7	10.8	9.9	9.0	8.3	7.5	6.9	6.1	5.5	4.8		
60.0	5.3	-	36.0	30.2	26.0	22.3	18.9	17.6	15.9	14.8	13.6	12.5	11.7	10.7	9.9	9.1	8.5	7.8	7.1				
55.0	5.0	-	42.0	35.3	29.4	24.1	20.2	18.3	16.7	15.3	14.1	13.0	12.0	11.1	10.3	9.4	8.8						
52.5	4.4	8.5	46.2	39.2	32.7	26.7	21.6	19.2	17.5	15.9	14.7	13.4	12.5	11.7	11.0	9.7							
47.5	4.2	13.8	50.0	46.9	34.9	27.8	22.1	19.7	17.9	16.3	15.1	13.9	12.9	12.3									
42.5	3.9	15.0	50.0	50.0	37.0	28.9	22.7	20.3	18.4	16.7	15.4	14.5											
40.0	3.7	15.5	50.0	50.0	38.0	29.5	23.1	20.7	18.8	17.2	15.8												
35.0	3.3	16.0	50.0	50.0	38.9	30.2	23.4	21.1	19.4														

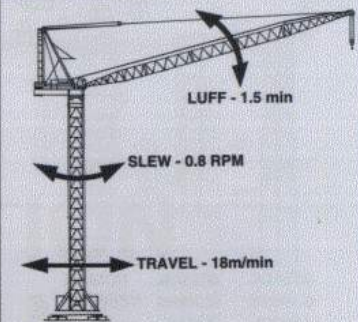
Speeds

(Alternative Speed Configurations Available on Request)

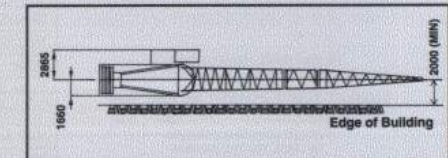
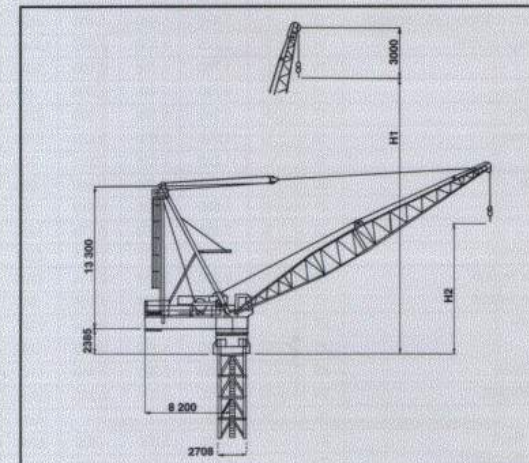
M600D HOIST SPEED CURVES



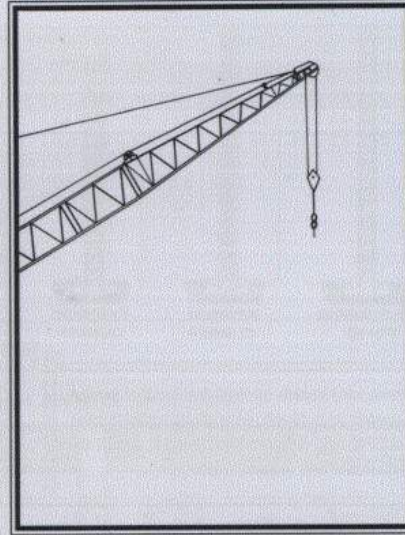
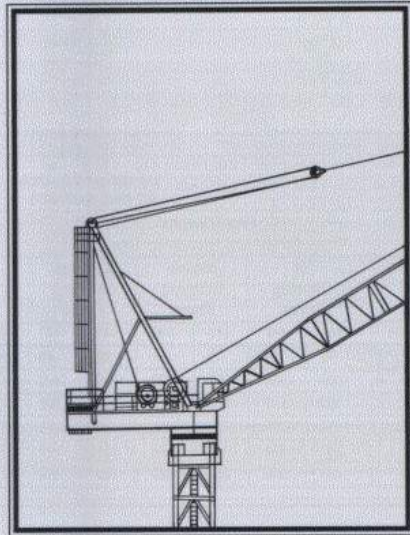
MOTION SPEEDS



Dimensions



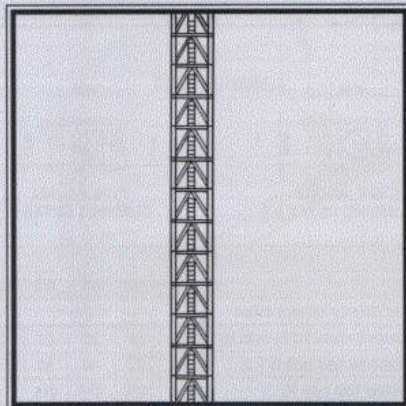
Max. Radius (m)	Boom Length (m)	Hook Height	
		H1 (m)	H2 (m)
70.0	73.4	73.2	19.7
65.0	68.8	68.6	18.6
60.0	64.2	64.0	17.5
55.0	59.6	59.4	16.3
52.5	55.0	54.8	15.2
47.5	50.4	50.2	14.1
42.5	45.8	45.6	12.1
40.0	41.2	41.0	11.5
35.0	36.6	36.4	9.5



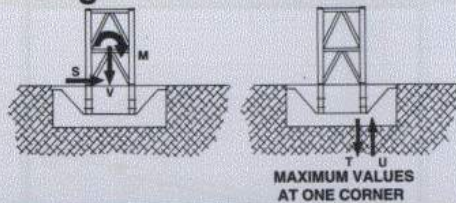
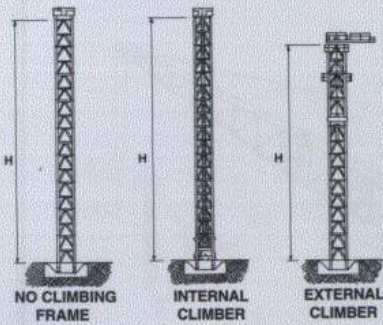
M600D CONSTRUCTION TOWER CRANE

Technical Data Sheet

**FVELLE
FAVCO**
THE CRANEMAKERS



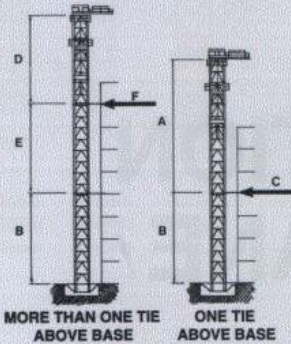
Crane on Base – Free Standing



Free-Standing Tower Height and Foundation Reactions							
	No Climbing Frame		Internal Climbing Frame		External Climbing Frame		
Tower	441	442	441	442	441	442	Units
H	40	48	40	48	36	44	(m)
M	1000	1300	1000	1260	1040	1320	(mT)
V	180	190	200	210	195	205	(T)
S	30	30	30	30	30	35	(T)
T	340	430	340	425	355	440	(T)
U	250	340	250	320	260	340	(T)

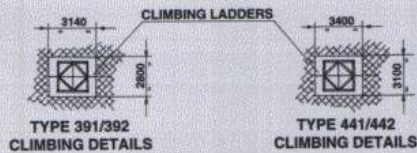
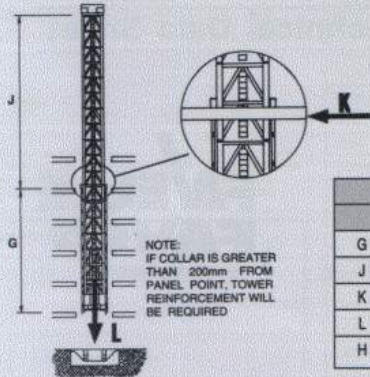
In-service wind speeds up to 20 m/s & out-of-service wind speeds up to 42 m/s. Alternatives available upon request. For long (>55m) booms, heights shown are only attainable with extra counterweight.

External Climbing

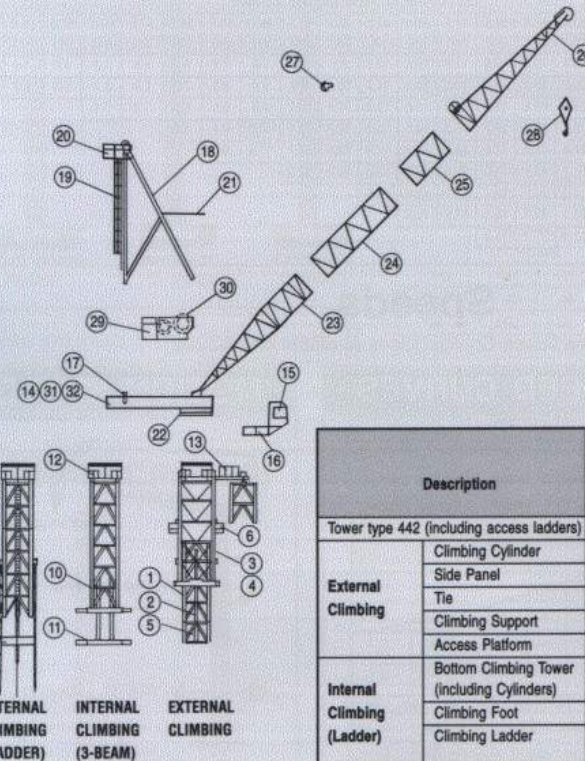


External Climbing			Tower		Units
			441	442	
Only one tie above base					
A	Max. height above first tie		32	36	(m)
B	Min. height base to first tie (with A)		28	32	(m)
C	Max. horizontal tie load (with A + B)		80	81	(T)
More than one tie above base					
D	Max. height above top tie		36	36	(m)
E	Min. distance between top two ties (with D)		24	28	(m)
F	Max. horizontal tie load (with D + E)		80	80	(T)

Internal Ladder Climbing



Internal Ladder Climbing						
	Tower	391	392	441	442	Units
G	Minimum distance between collars	14.0 m				
J	Max. distance above top tie (with G)	24	28	32	32	(m)
K	Max. horizontal load (with G + J)	65	70	80	80	(T)
L	Total vertical load (with H)	195	200	215	215	(T)
H	Max. free-standing height	28	32	40	40	(m)



For more details, please contact us at
Malaysia:
FAVELLE FAVCO CRANES (M) SDN. BHD.
 9, Ground Floor, Jalan SS15/4, 47500 Subang Jaya
 Selangor Darul Ehsan, Malaysia
 Tel: (603) 734-0612/734-0635
 Fax: (603) 734-0610

Singapore:
FAVELLE FAVCO CRANES PTE LTD
 15C, Pender Road
 Singapore 2280
 Tel: (65) 2680095
 Fax: (65) 2652646

Australia:
FAVELLE FAVCO CRANES PTY LTD
 28, Yarrunga Street, Preston
 N.S.W. 2170, Sydney, Australia
 Tel: (612) 6082000
 Fax: (612) 6070022

Distributed By:

Description	Item	Qty.	L Length (m)	B Width (m)	H Height (m)	Weight per Item (kg)	
Tower type 442 (including access ladders)	1	-	4.000	2.720	2.710	4400	
External Climbing	Climbing Cylinder	2	2	5.030	0.292	0.292	1500
	Side Panel	3	2	11.520	0.370	2.740	4973
	Tie	4	2	7.020	0.168	3.410	907
	Climbing Support	5	2	2.650	0.335	0.800	332
	Access Platform	6	1	3.550	1.073	1.235	199
Internal Climbing (Ladder)	Bottom Climbing Tower (including Cylinders)	7	1	4.000	2.700	2.700	14765
	Climbing Foot	8	1	2.708	0.350	0.880	1359
Internal Climbing (3-Beam)	Climbing Ladder	9	As Req.	0.210	0.170	7.985	525
	Bottom Climbing Tower	10	1	2.090	2.700	4.575	8509
Internal Climbing (3-Beam)	Climbing Beams	11	1	0.450	2.700	0.802	1630
	Slew Mount	12	1	3.410	3.310	1.820	5470
Monorail Beam & Trolley (ext. climbing)	13	1	7.430	1.680	1.400	1695	
Machinery Deck (unsplit)	14	1	9.875	3.330	1.592	13045	
Cabin	15	1	1.700	1.100	2.100	1200	
Cabin Support	16	1	3.790	1.440	1.500	396	
Counterweights	17	9	2.140	0.160	1.800	5380	
Mast & Sheaves	18	1	14.000	0.800	3.220	5765	
Mast Ladder	19	1	11.220	0.975	0.800	305	
Mast Platform	20	1	2.475	1.450	0.940	208	
Boom Buffer	21	1	3.590	0.220	2.810	288	
Slew Ring	22	1	3.100	3.100	0.175	1950	
Bottom Jib Section	23	1	13.700	3.040	2.414	2504	
Jib Extension Section	24	1	9.200	2.414	2.414	1804	
Jib Extension Section	25	1	4.600	2.414	2.414	944	
Top Jib Section	26	1	13.700	2.414	2.414	2907	
Bridle	27	1	0.750	1.170	0.890	785	
2-Fall Hook Block	28	1	0.890	0.332	1.940	1141	
Powerpack/Winches	29	1	4.250	2.600	2.250	13459	
Hoist Rope	30	1	565	-	-	4343	
Split Deck - Front	31	1	3.560	3.330	1.592	6000	
Split Deck - Back	32	1	6.590	3.330	1.189	8900	

* Subject to change without notice