

FAVELLE FAVCO

the Cranemakers

FOR OVER 30 YEARS, AUSTRALIAN MADE FAVELLE FAVCO CRANES HAVE BEEN AT THE LEADING EDGE OF HIGH RISE CONSTRUCTION AROUND THE WORLD.

FIRST IN AUSTRALIA, THEN AT THE WORLD TRADE CENTRE IN NEW YORK IN 1967, TO SINGAPORE, TAIWAN AND THE UK IN 1990, FAVELLE FAVCO CRANES HAVE GUARANTEED ONE VITAL EQUATION: POWER + SPEED + RELIABILITY = PERFORMANCE.

FAVELLE FAVCO CRANES ARE DESIGNED AND MANUFACTURED TO EXACTING SPECIFICATIONS TO PROVIDE DURABILITY, RELIABILITY, HIGH PERFORMANCE, AND SAFETY WHICH IS SECOND TO NONE.

THEY COMBINE ADVANCED TECHNOLOGY WITH STATE OF THE ART COMPUTER DESIGN AND OVER 30 YEARS OF INTERNATIONAL EXPERIENCE.

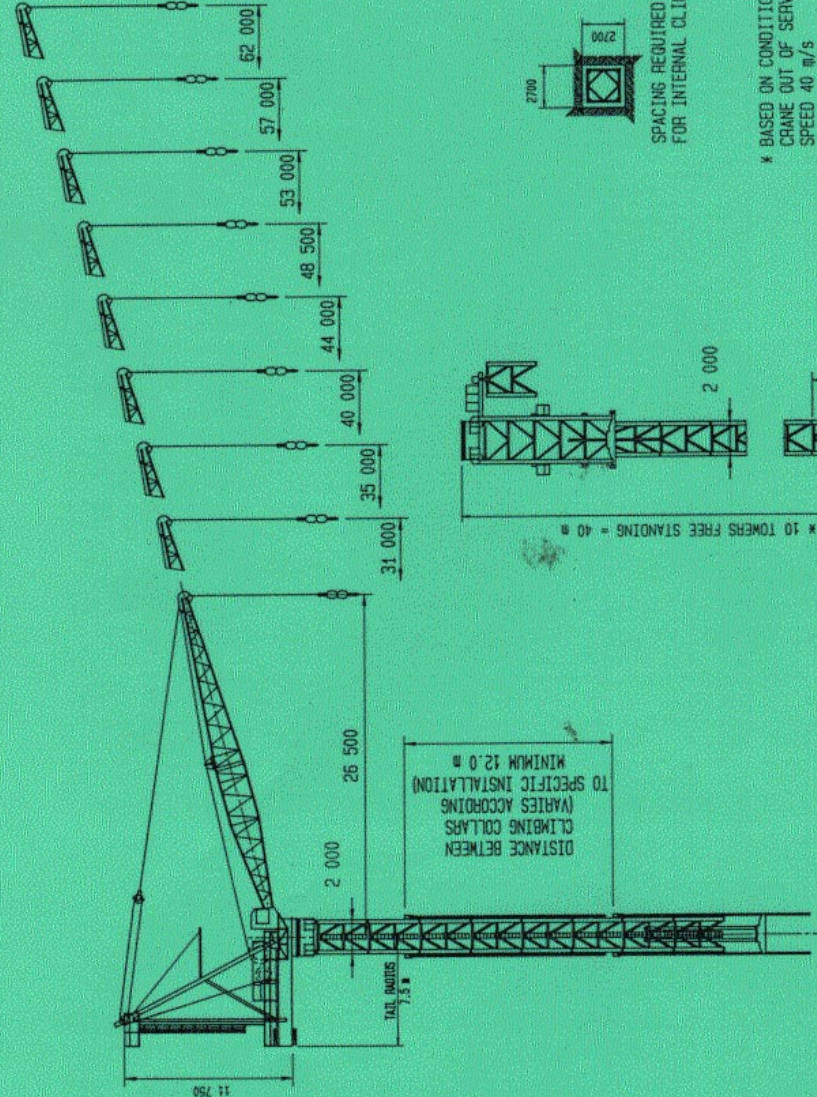
WHEN AUSTRALIAN AND INTERNATIONAL PROJECTS CALL FOR A CRANE WHICH CAN MANAGE A MONTHLY LIFT CAPACITY WELL BEYOND CONVENTIONAL LIMITS, THEY CONSULT FAVELLE FAVCO.

THE SUCCESS OF FAVELLE FAVCO CRANES HAS ALWAYS BEEN PERFORMANCE CAPABILITY, WHICH IS FAR BEYOND EUROPEAN AND JAPANESE COMPETITORS.

THE ESSENCE OF A FAVELLE FAVCO CRANE'S SUPERIORITY, IS ITS POWER PLANT.



M380D TOWER CRANE



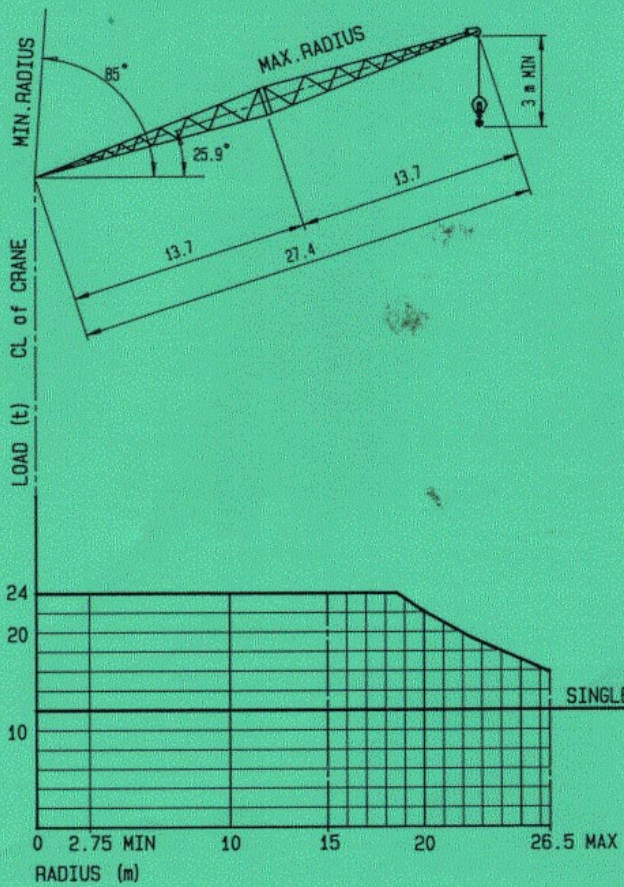
FAVELLE FAVCO
INCORPORATED IN N.S.W.

M380D TOWER CRANE

389-0014



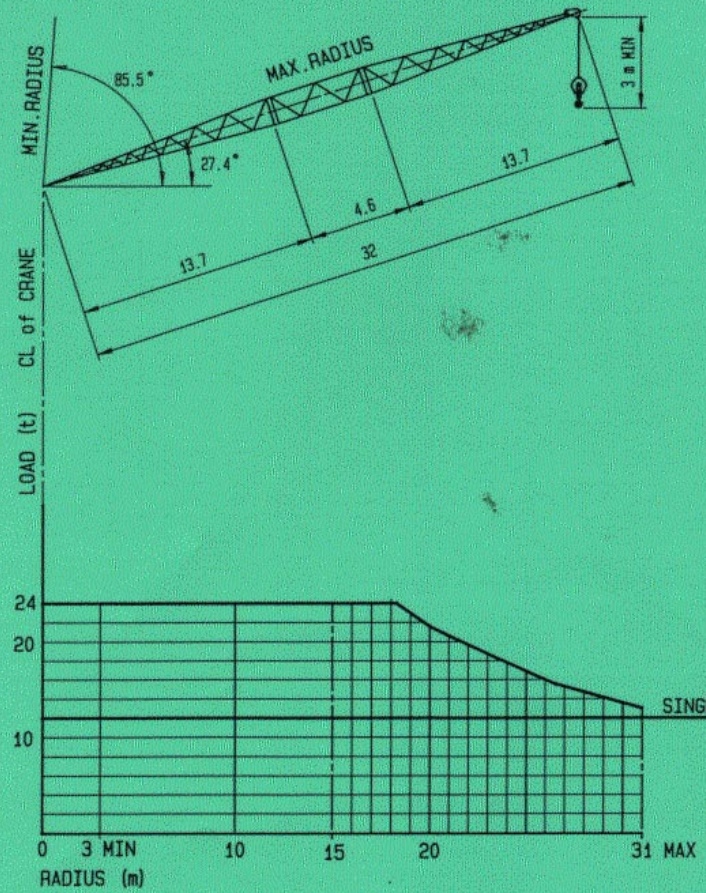
LOAD CHART M380D
BOOM LENGTH 27.4 m



380-27-000D



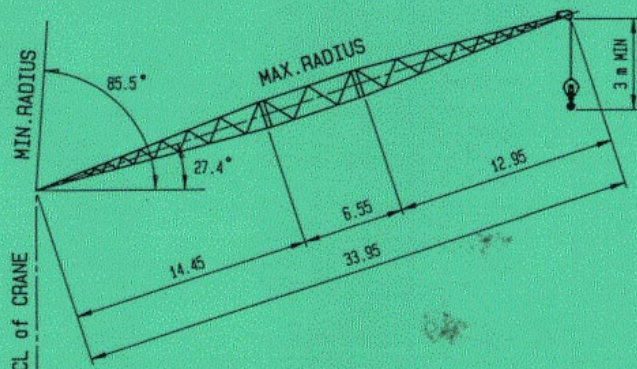
LOAD CHART M380D
BOOM LENGTH 32 m



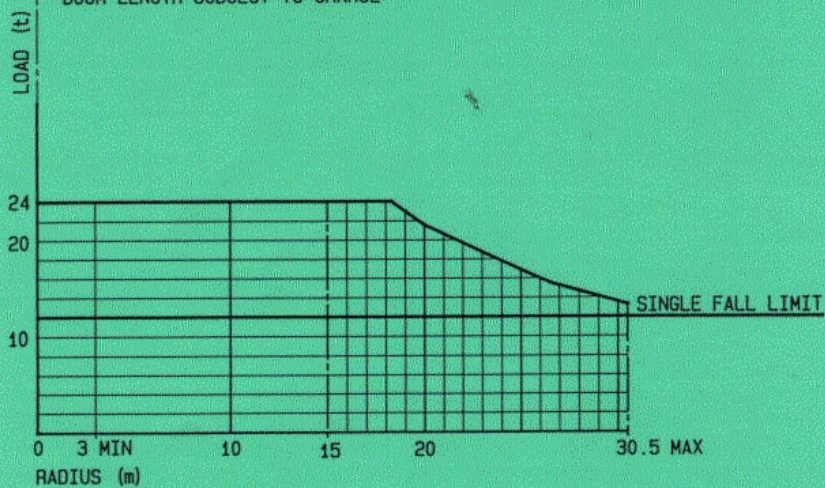
380-32-000B



LOAD CHART M380D
BOOM LENGTH 33.95 m



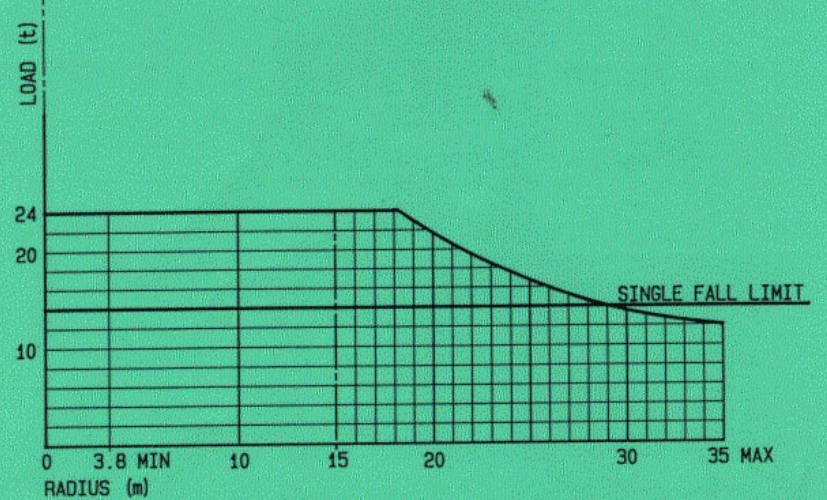
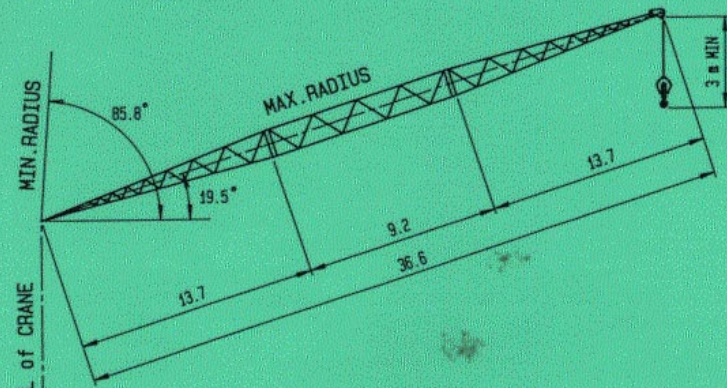
BOOM LENGTH SUBJECT TO CHANGE



380-34-000C



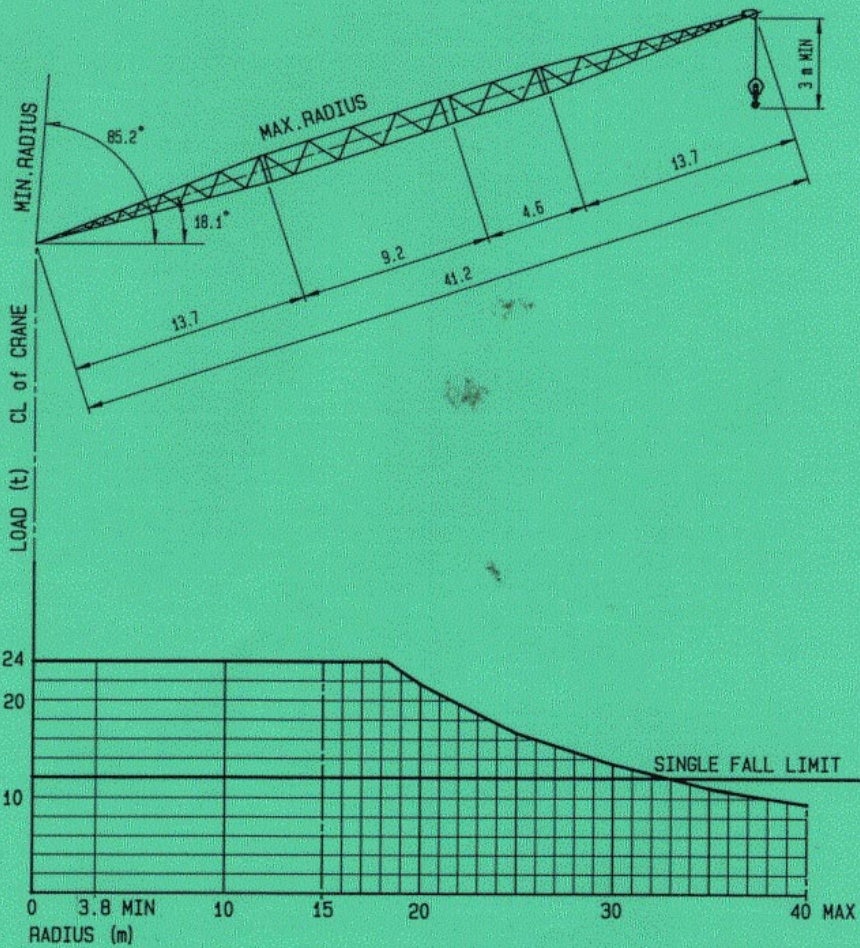
LOAD CHART M380D
BOOM LENGTH 36.6 m



380-37-000B



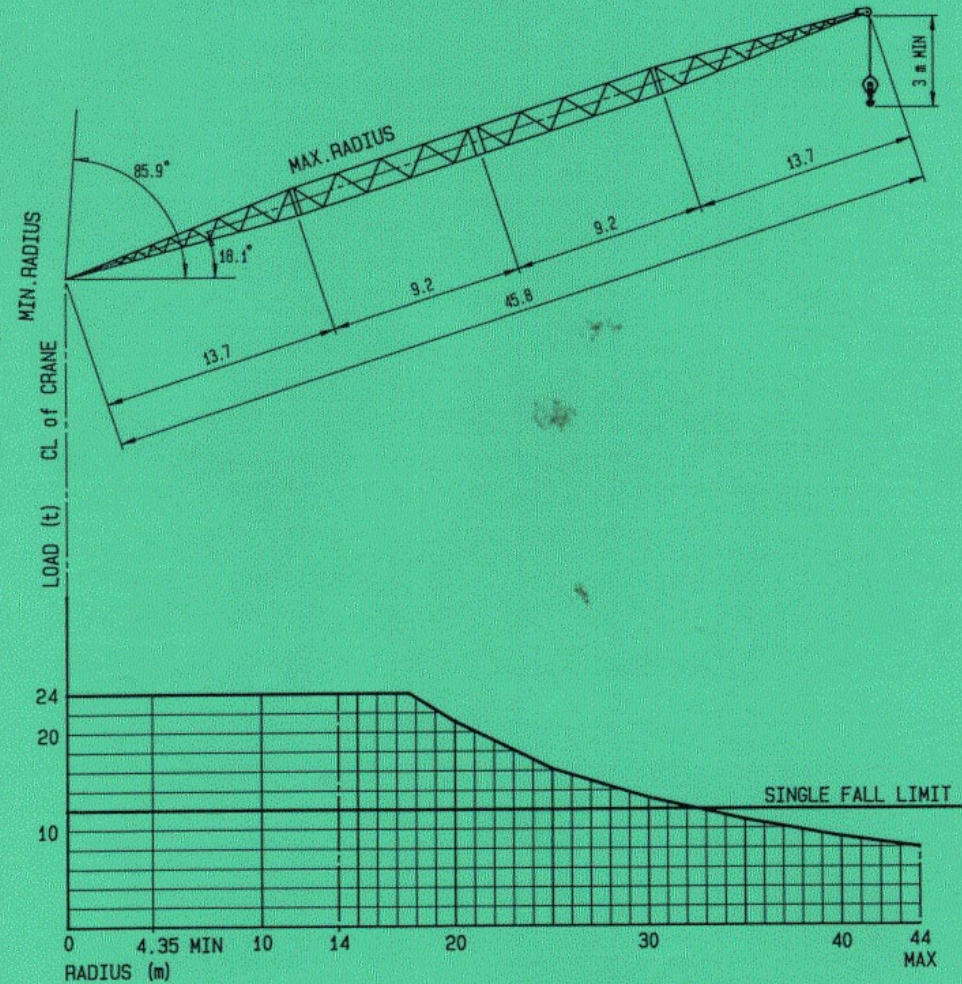
LOAD CHART M380D
BOOM LENGTH 41.2 m



380-41-000D



LOAD CHART M380D
BOOM LENGTH 45.8 m

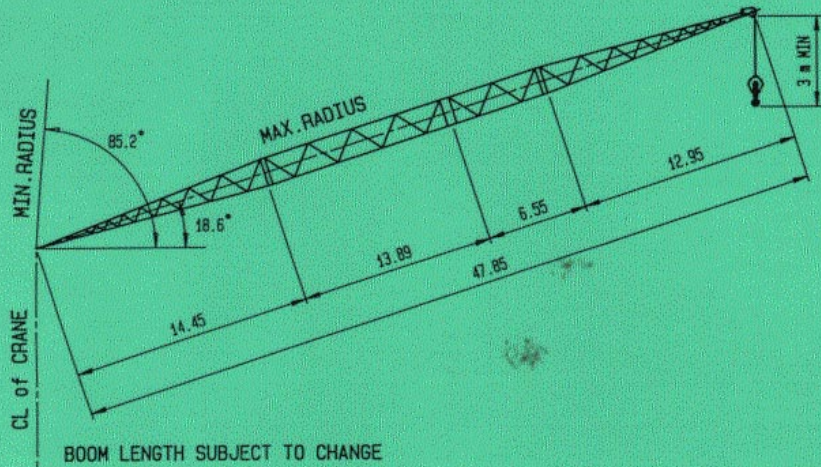


380-46-000B

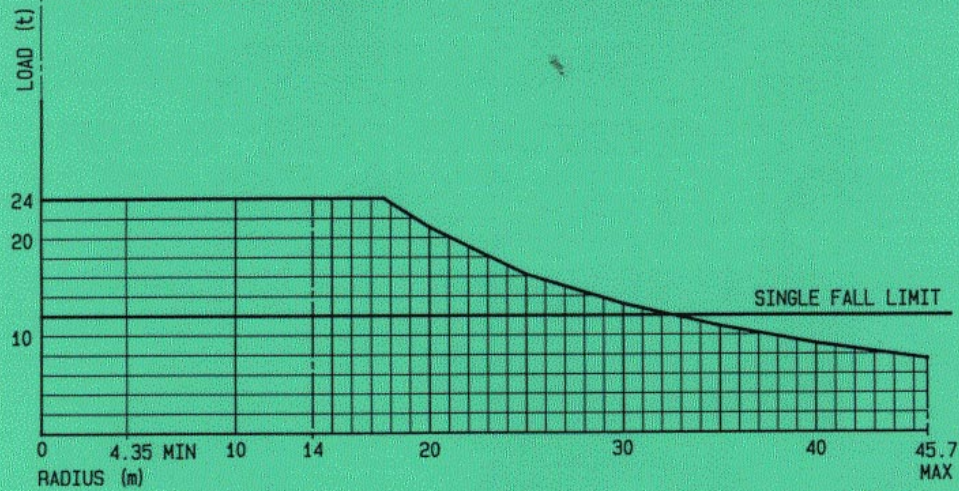


LOAD CHART M380D

BOOM LENGTH 47.85m



BOOM LENGTH SUBJECT TO CHANGE

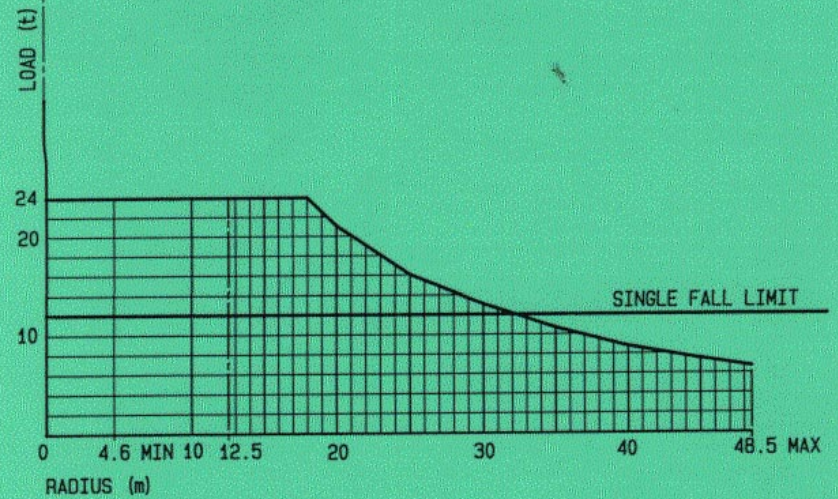
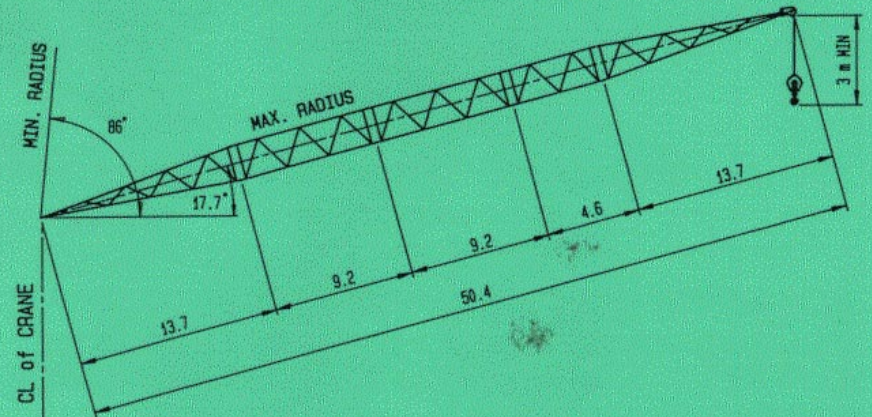


380-48-000C



LOAD CHART M380D

BOOM LENGTH 50.4m

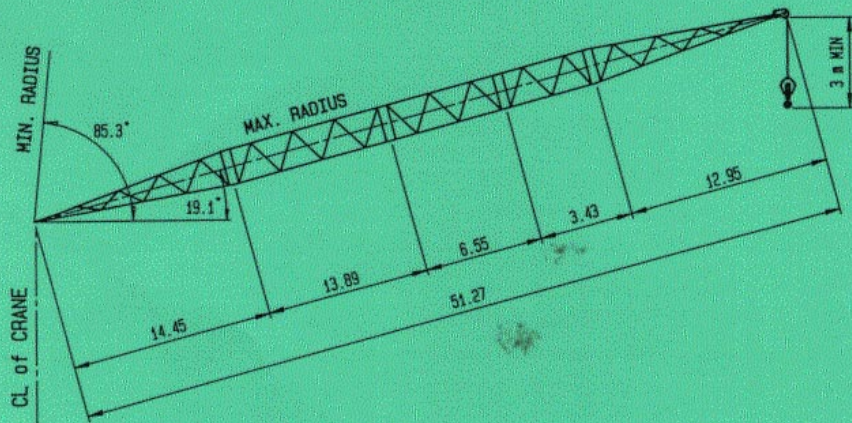


380-50-000B

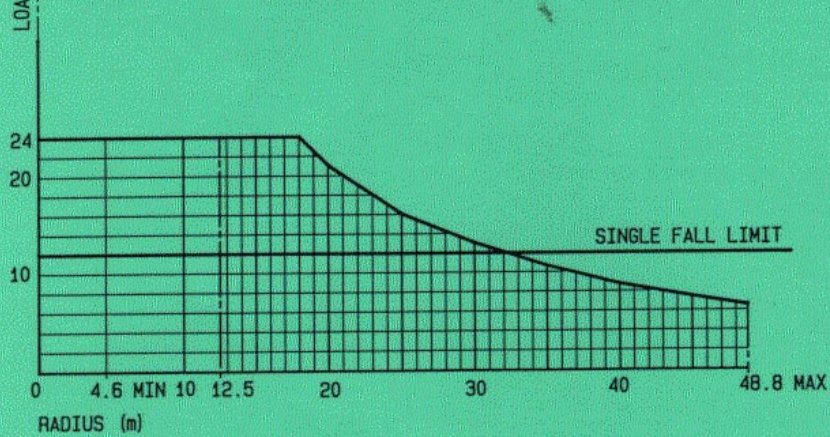


LOAD CHART M380D

BOOM LENGTH 51.27m



BOOM LENGTH SUBJECT TO CHANGE

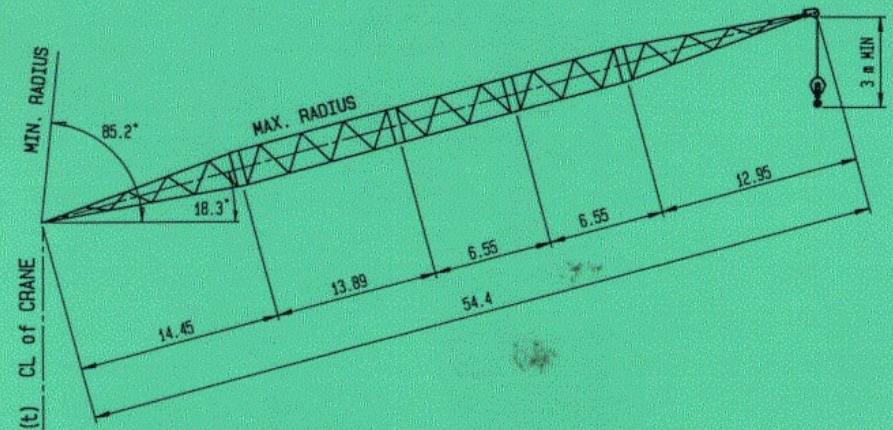


380-51-000C

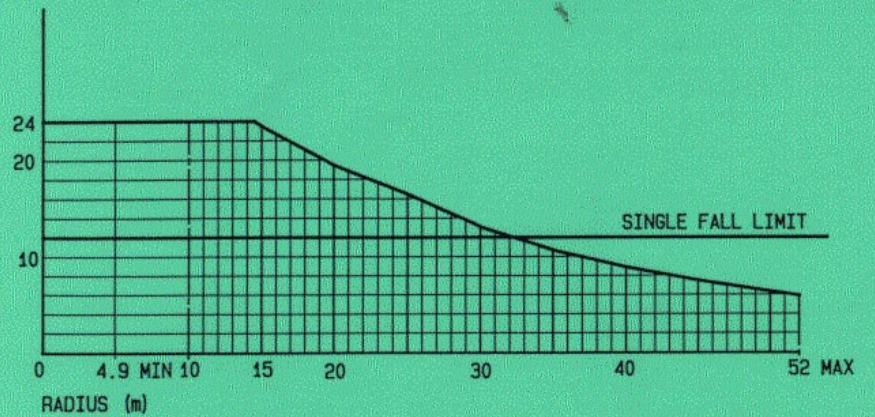


LOAD CHART M380D

BOOM LENGTH 54.4m



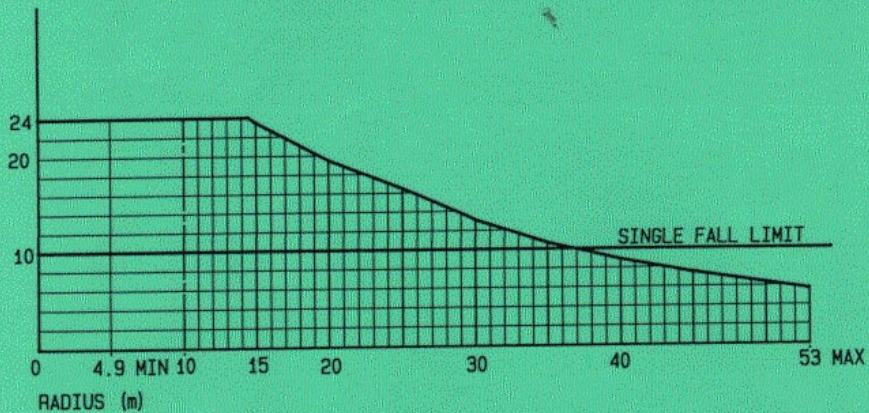
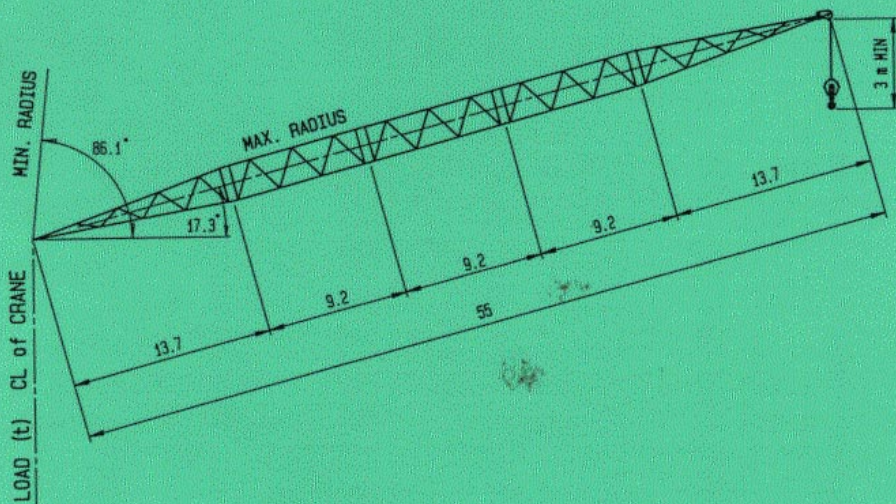
BOOM LENGTH SUBJECT TO CHANGE



380-54-000C



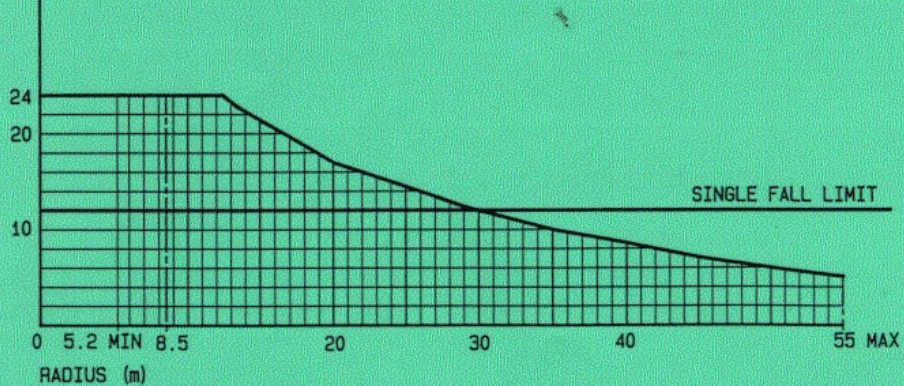
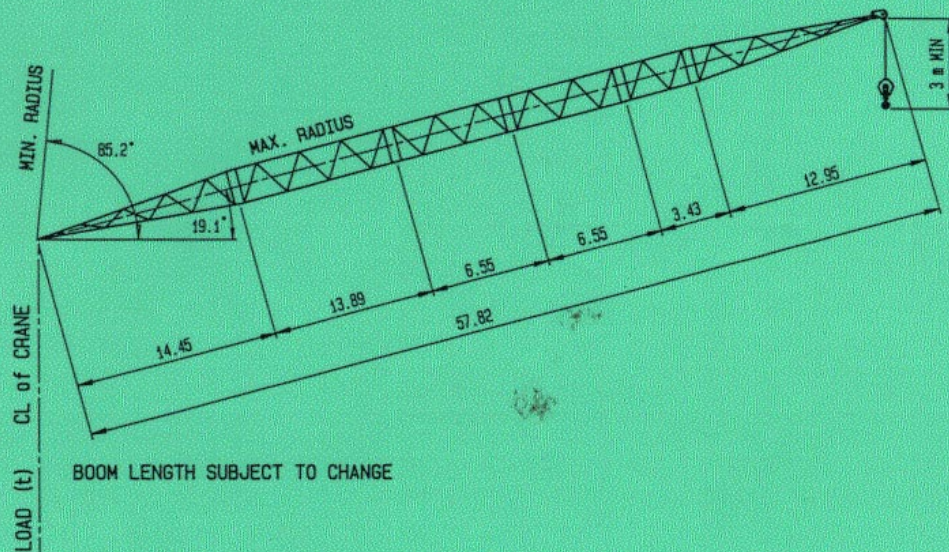
LOAD CHART M380D
BOOM LENGTH 55m



380-55-000B



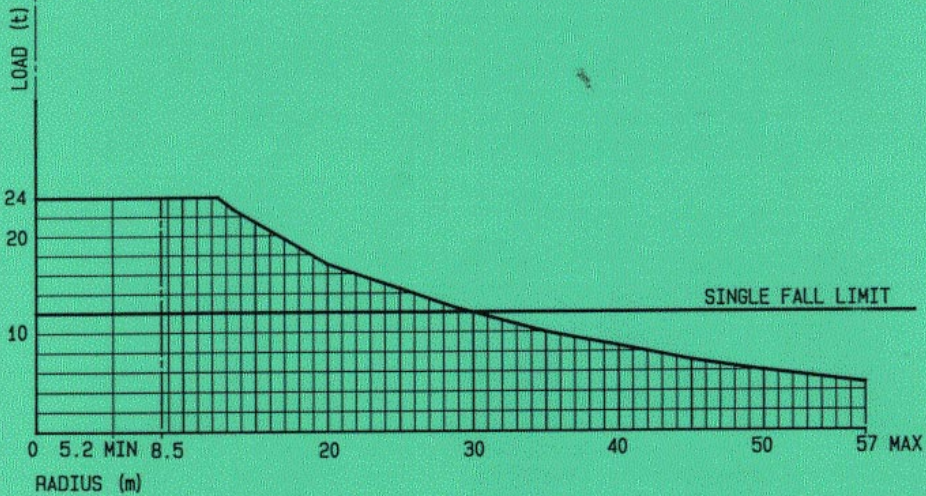
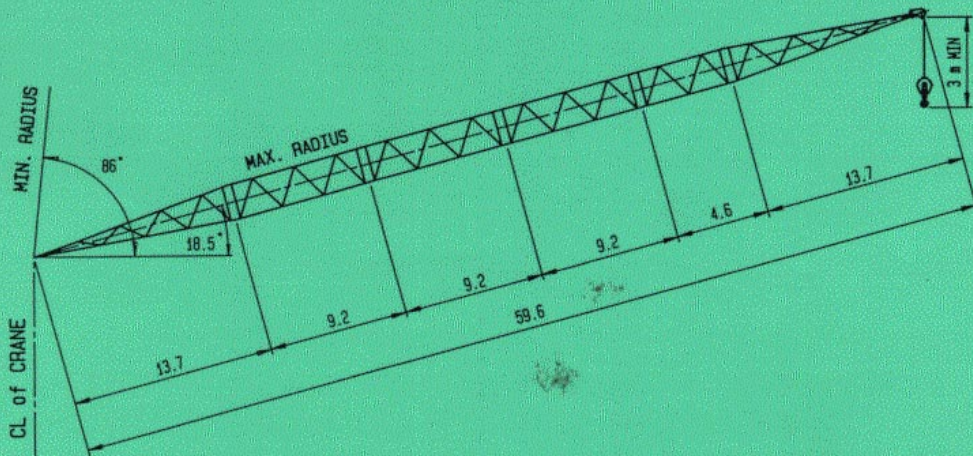
LOAD CHART M380D
BOOM LENGTH 57.82m



380-58-000C

**FAELLE
FAVCO**

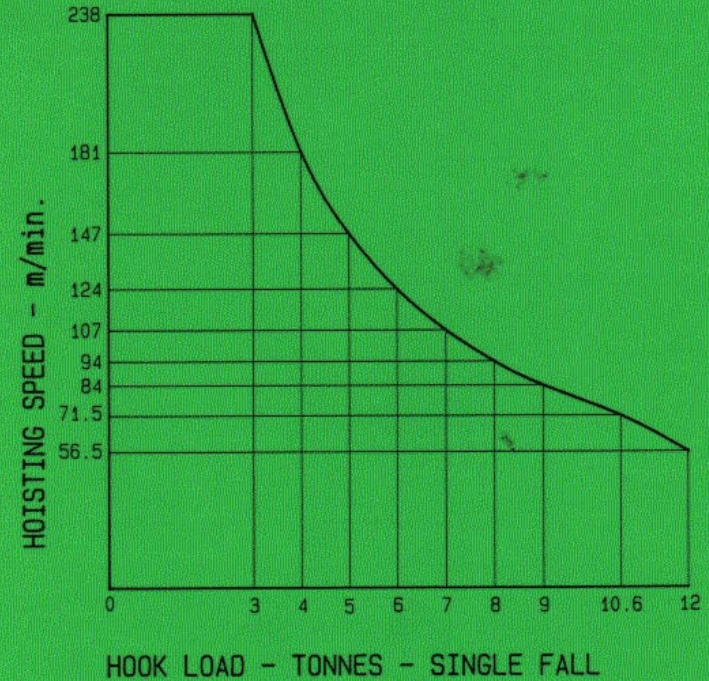
LOAD CHART M380D
BOOM LENGTH 59.6m



380-60-000B

**FAELLE
FAVCO**

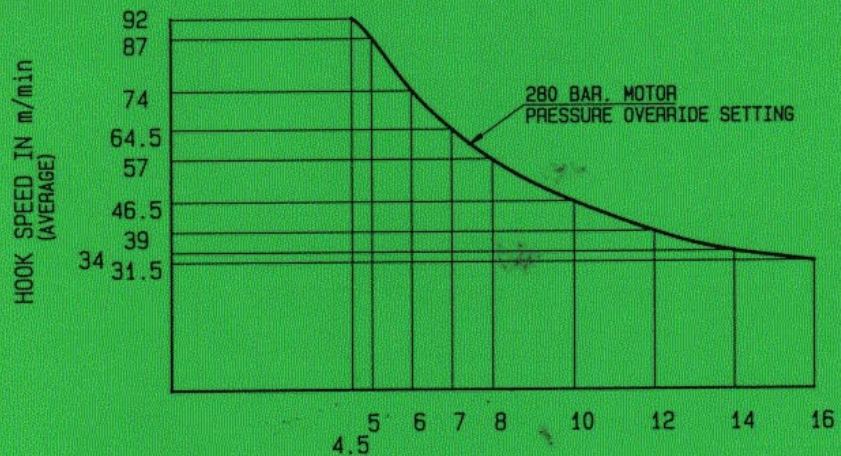
WINCH
HIGH SPEED 12 TONNE



SUITS M310, M380, M440 12 t HS



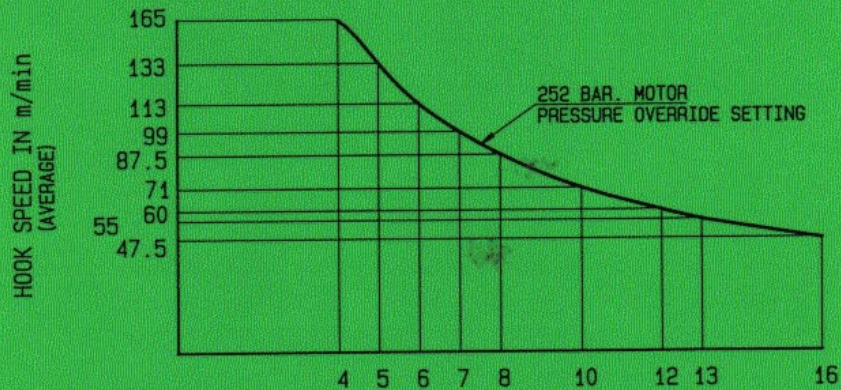
OPTIONAL
HOIST WINCH PERFORMANCE CURVE
TYPE: 380.250.16.A



HOOK LOAD IN TONNE - SINGLE FALL

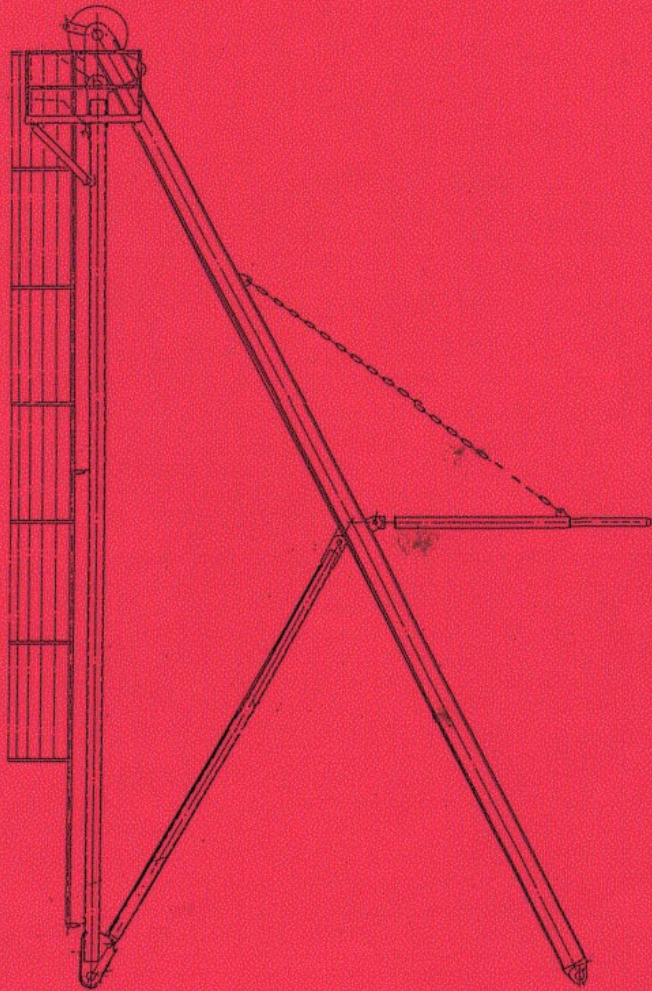


OPTIONAL
HOIST WINCH PERFORMANCE CURVE
TYPE: 380.300.16.A



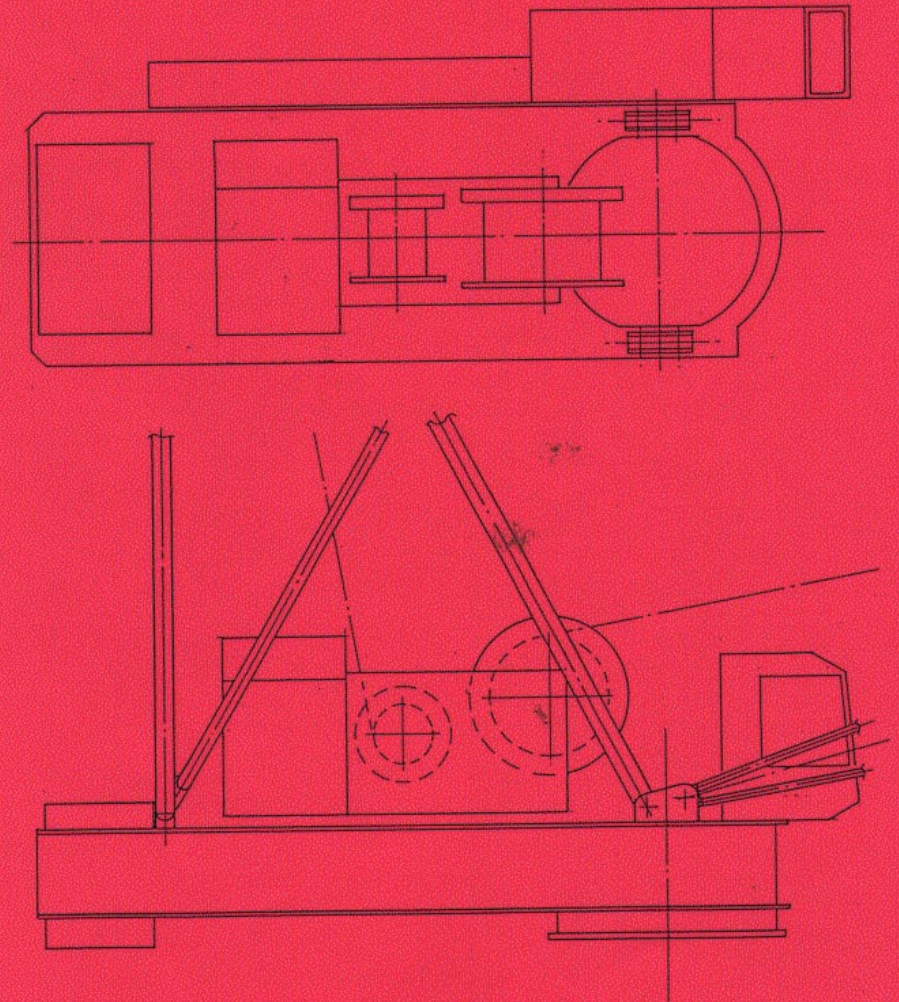
HOOK LOAD IN TONNE - SINGLE FALL

**FAELLE
FAVCO**



MAST ASSEMBLY

**FAELLE
FAVCO**



MACHINERY DECK LAYOUT