

FAVELLE FAVCO

the Cranemakers

FOR OVER 30 YEARS, AUSTRALIAN MADE FAVELLE FAVCO CRANES HAVE BEEN AT THE LEADING EDGE OF HIGH RISE CONSTRUCTION AROUND THE WORLD.

FIRST IN AUSTRALIA, THEN AT THE WORLD TRADE CENTRE IN NEW YORK IN 1967, TO SINGAPORE, TAIWAN AND THE UK IN 1990, FAVELLE FAVCO CRANES HAVE GUARANTEED ONE VITAL EQUATION: POWER + SPEED + RELIABILITY = PERFORMANCE.

FAVELLE FAVCO CRANES ARE DESIGNED AND MANUFACTURED TO EXACTING SPECIFICATIONS TO PROVIDE DURABILITY, RELIABILITY, HIGH PERFORMANCE, AND SAFETY WHICH IS SECOND TO NONE.

THEY COMBINE ADVANCED TECHNOLOGY WITH STATE OF THE ART COMPUTER DESIGN AND OVER 30 YEARS OF INTERNATIONAL EXPERIENCE.

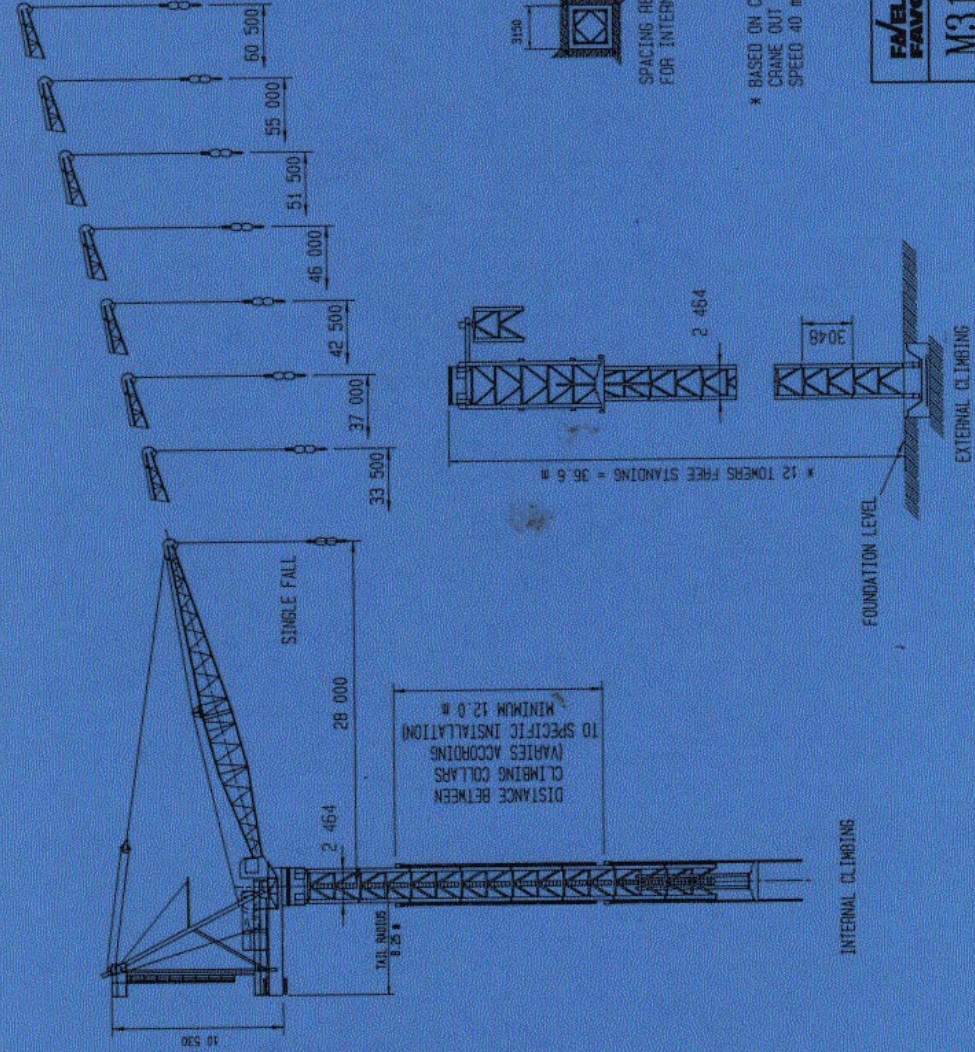
WHEN AUSTRALIAN AND INTERNATIONAL PROJECTS CALL FOR A CRANE WHICH CAN MANAGE A MONTHLY LIFT CAPACITY WELL BEYOND CONVENTIONAL LIMITS, THEY CONSULT FAVELLE FAVCO.

THE SUCCESS OF FAVELLE FAVCO CRANES HAS ALWAYS BEEN PERFORMANCE CAPABILITY, WHICH IS FAR BEYOND EUROPEAN AND JAPANESE COMPETITORS.

THE ESSENCE OF A FAVELLE FAVCO CRANE'S SUPERIORITY, IS ITS POWER PLANT.



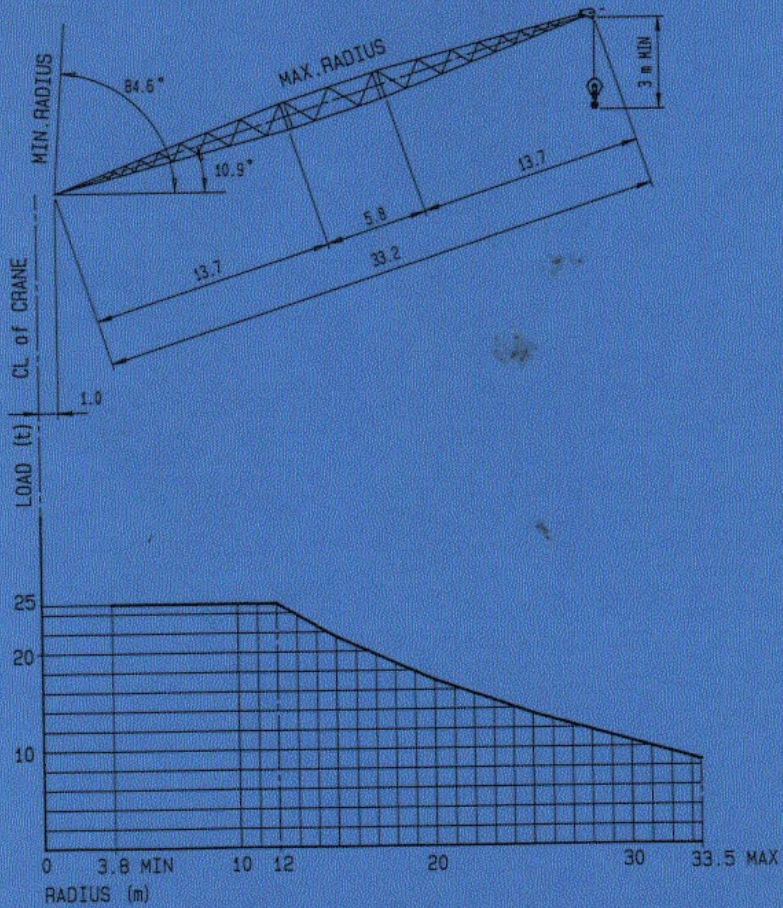
M310D TOWER CRANE



FAVELLE FAVCO CRANES PTY. LTD.
INCORPORATED IN U.S.A.
M310D TOWER CRANE
DWF. NO. - 310-000A



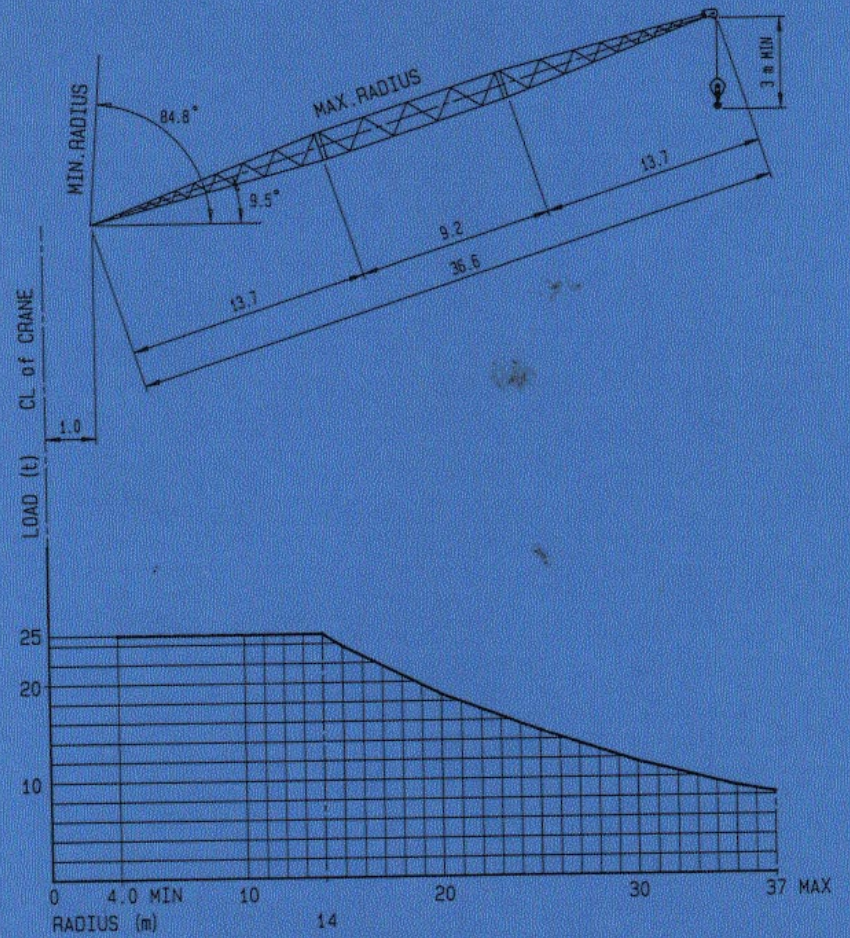
LOAD CHART M310D
BOOM LENGTH 33.2 m



310-33-000B



LOAD CHART M310D
BOOM LENGTH 36.6 m

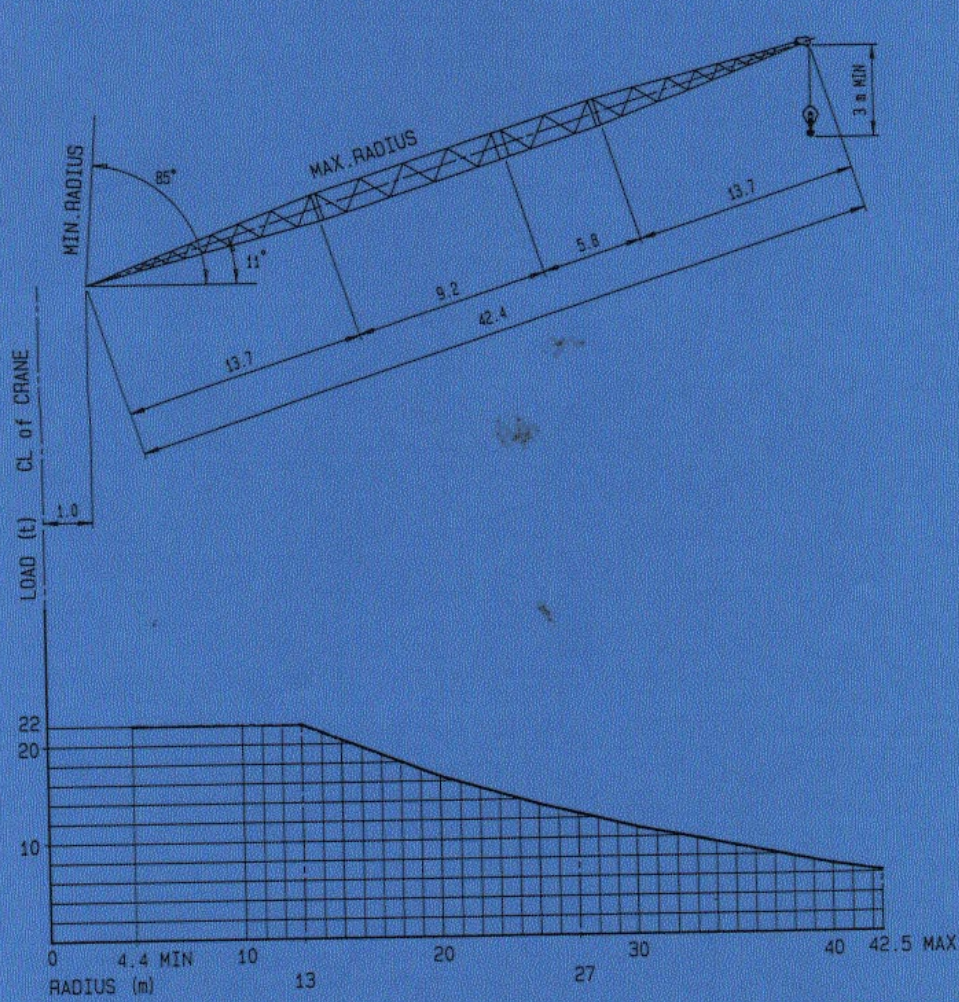


310-37-000B

**FVELLE
FAVCO**

LOAD CHART M310D

BOOM LENGTH 42.4 m

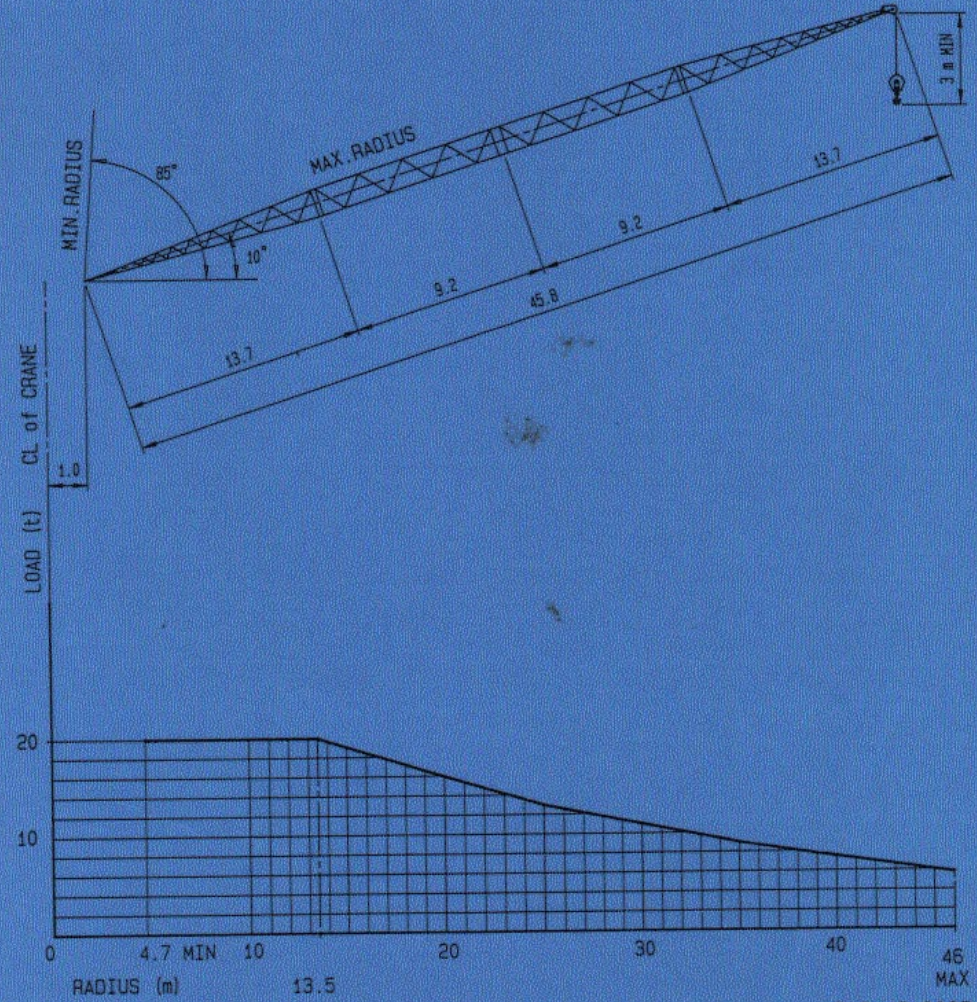


310-42-000B

**FVELLE
FAVCO**

LOAD CHART M310D

BOOM LENGTH 45.8 m

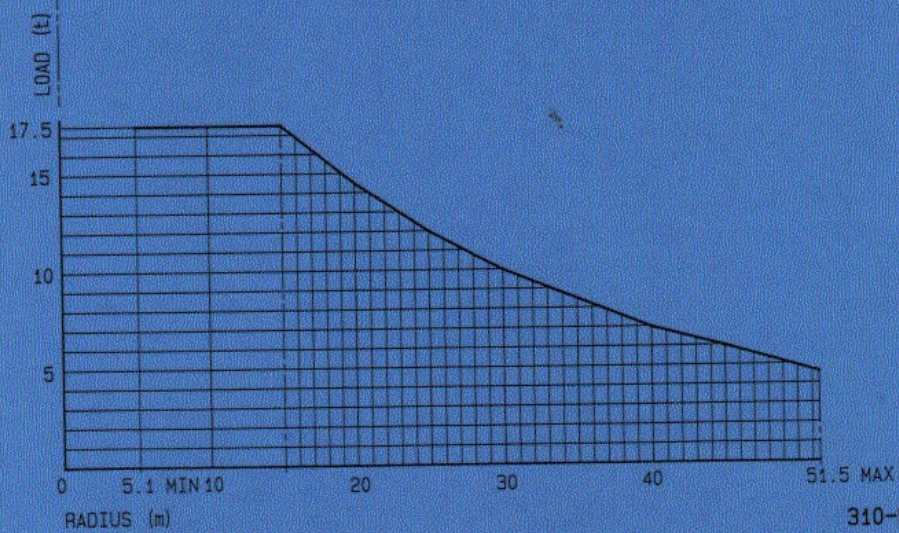
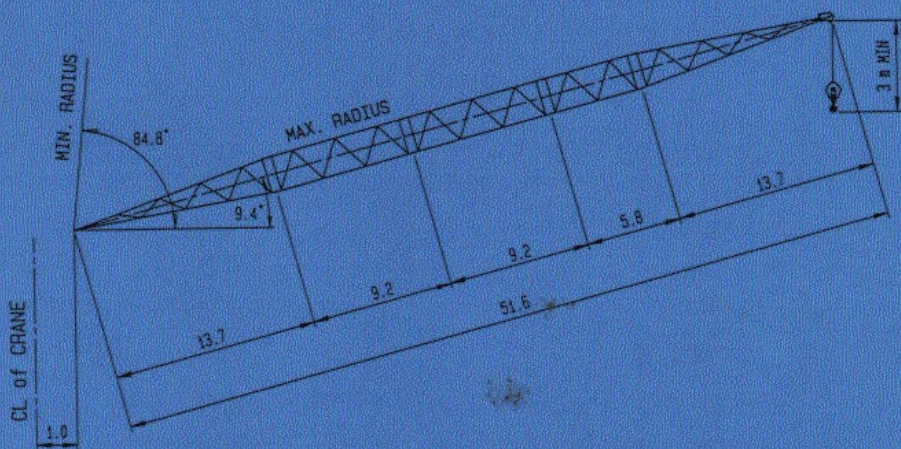


310-46-000B



LOAD CHART M310D

BOOM LENGTH 51.6 m

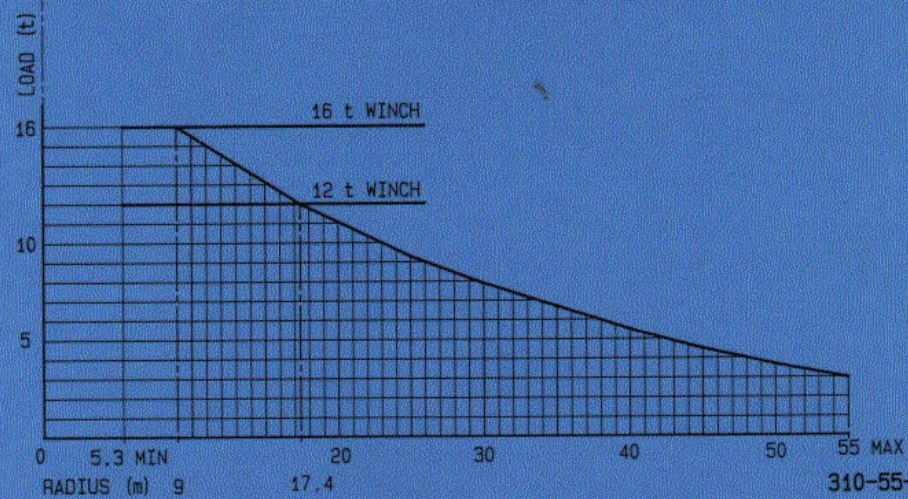
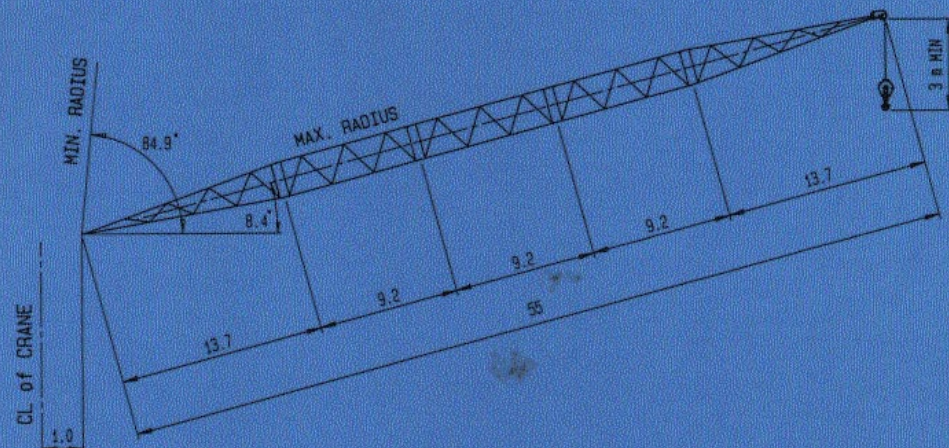


310-52-000B



LOAD CHART M310D

BOOM LENGTH 55 m

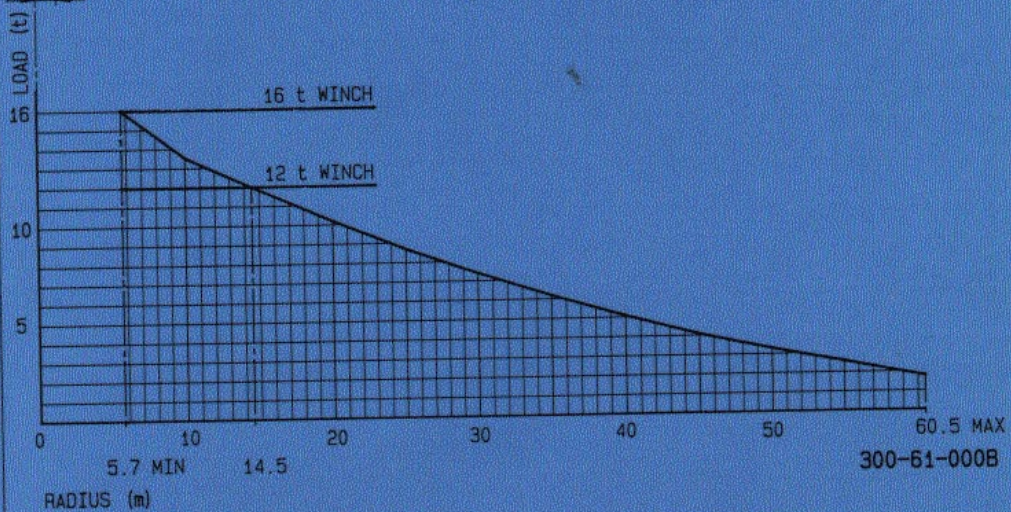
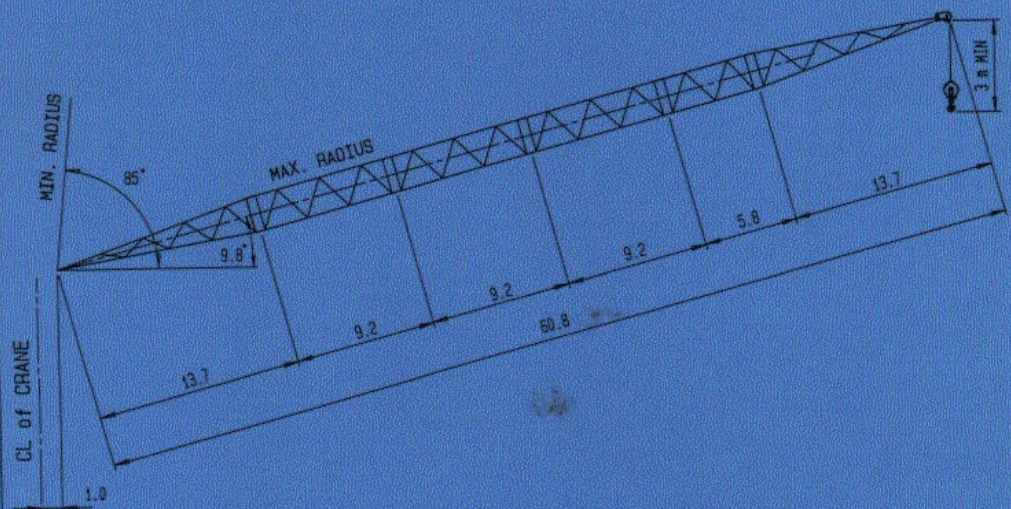


310-55-000B

**FAELLE
FAVCO**

LOAD CHART M310D

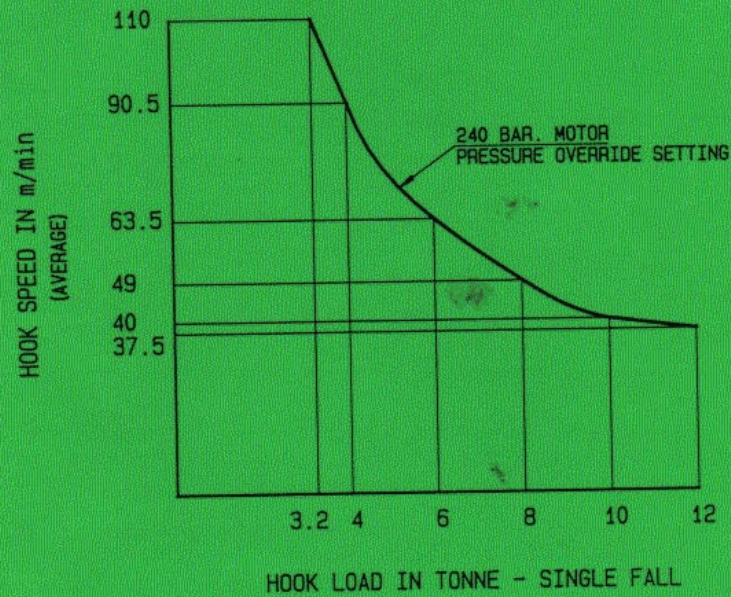
BOOM LENGTH 60.8 m



**FAELLE
FAVCO**

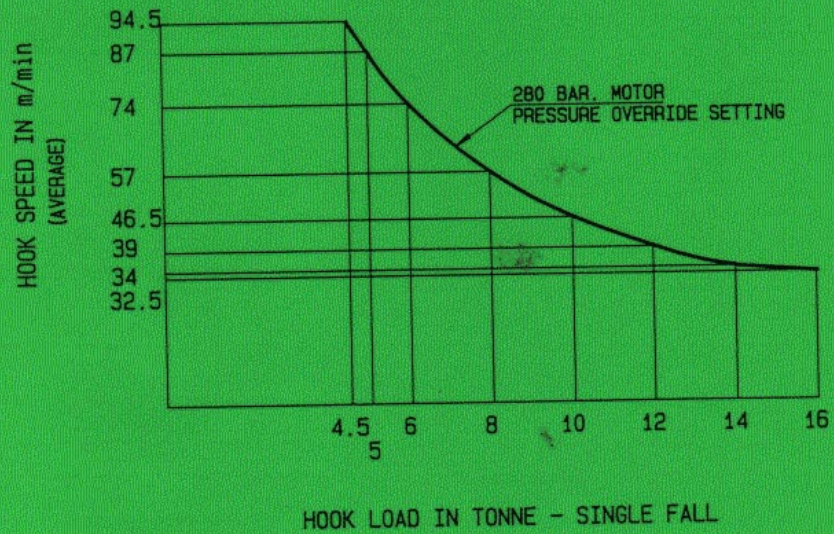
HOIST WINCH PERFORMANCE CURVE

TYPE: 310.250.12.A

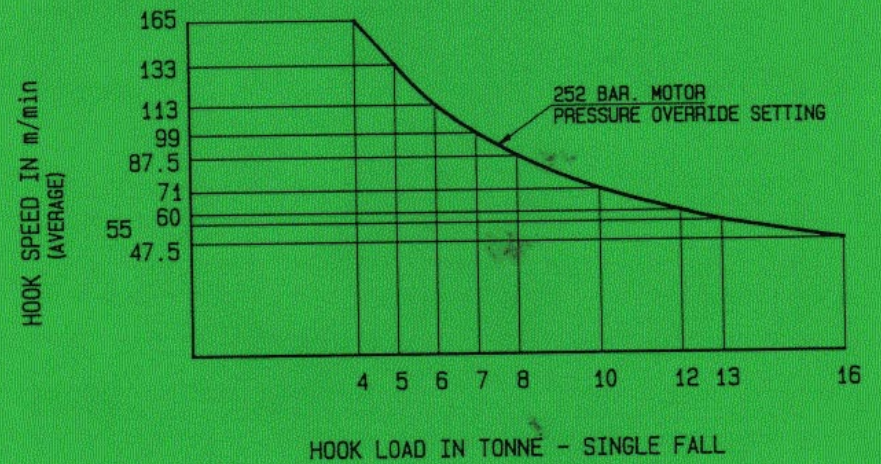




OPTIONAL
HOIST WINCH PERFORMANCE CURVE
TYPE: 310.250.16.A



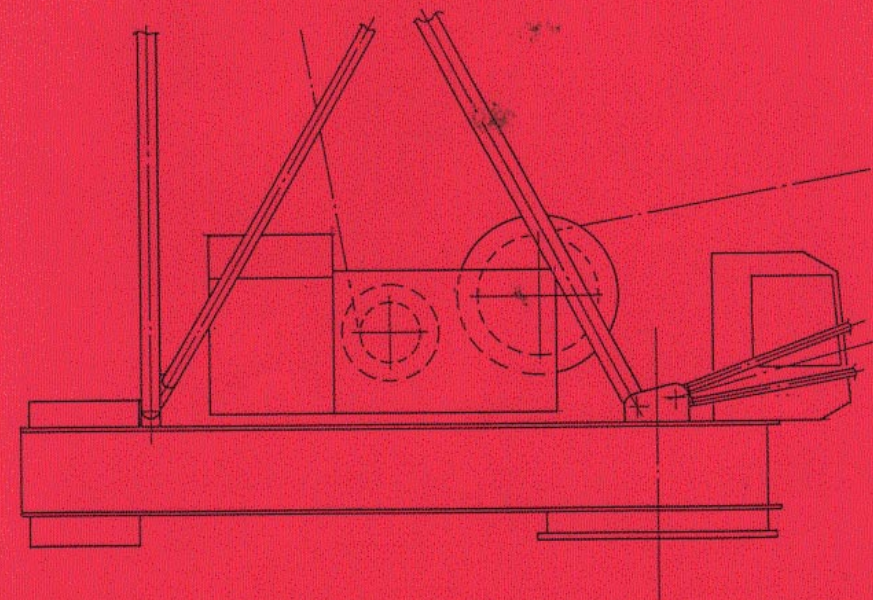
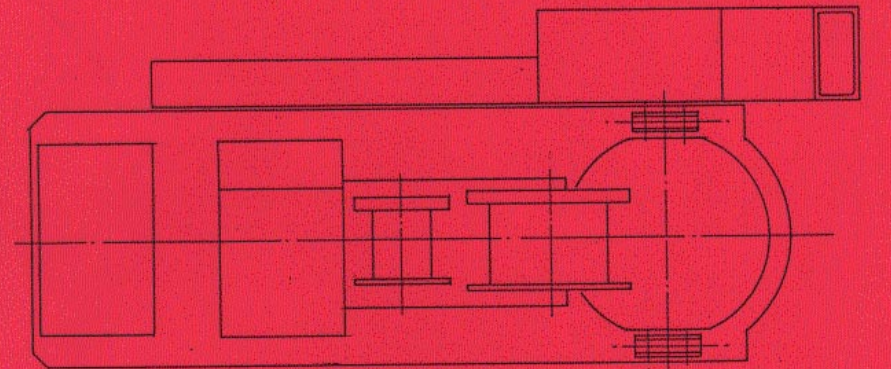
OPTIONAL
HOIST WINCH PERFORMANCE CURVE
TYPE: 310.300.16.A



**M310D COMPONENT
LIST & WEIGHTS**

DESCRIPTION	QTY	SKETCH	L LENGTH (m)	B WIDTH (m)	H HEIGHT (m)	WEIGHT PER ITEM kg	
TOWER (including ladders)			3.048	2.464	2.464	2400	
CLIMBING CYLINDER	2		4.915	0.229	0.229	1500	
EXTERNAL CLING. CONSIST OF:	SIDE PANEL	2		8.550	0.304	2.625	1900
	TIE	2		6.910	0.168	3.410	417
	CLIMBING LEG	2		2.615	0.335	0.800	148
INTERNAL CLING. CONSIST OF:	BOTTOM CLIMBING TOWER	1		4.000	2.464	2.464	7190
	TOP CLIMBING TOWER	1		4.000	2.464	2.464	5170
	CLIMBING FOOT	1		2.464	0.350	0.710	1040
SLEW MOUNT	1		3.110	2.660	1.450	3400	
MONORAIL BEAM & TROLLEY	1		7.430	1.680	1.400	1330	
M/C DECK FRONT	1		3.110	3.040	1.650	5500	
M/C DECK BACK	1		6.400	3.040	1.650	3800	
CABIN	1		1.700	1.100	2.100	1200	
FIXED COUNTERWEIGHTS	7		3.600	0.180	1.000	5100	
MAST & SHEAVES	1		11.300	3.000	6.250	3300	
LADDER & PLATFORM	1		10.200	0.900	0.800	700	
SLEW RING	1		2.660	2.660	0.184	1176	
BOTTOM JIB SECT.	1		13.700	2.740	2.380	2480	
JIB EXTENSION SECT.	1		9.200	2.380	2.380	1296	
JIB EXTENSION SECT.	1		5.800	2.380	2.380	854	
JIB EXTENSION SECT.	1		3.400	2.380	2.380	542	
TOP JIB SECT.	1		14.280	2.380	2.380	1450	
SINGLE FALL HOOK	1		2.300	0.250	0.250	400	
POWER PACK/WIN. INCL. LUFF ROPE	1		3.500	1.450	1.900	7020	
HOIST ROPE DIA 32	1		240			1050	

ALL WEIGHTS SUBJECT TO ALTERATION DUE TO PRODUCT DEVELOPMENT



MACHINERY DECK LAYOUT

