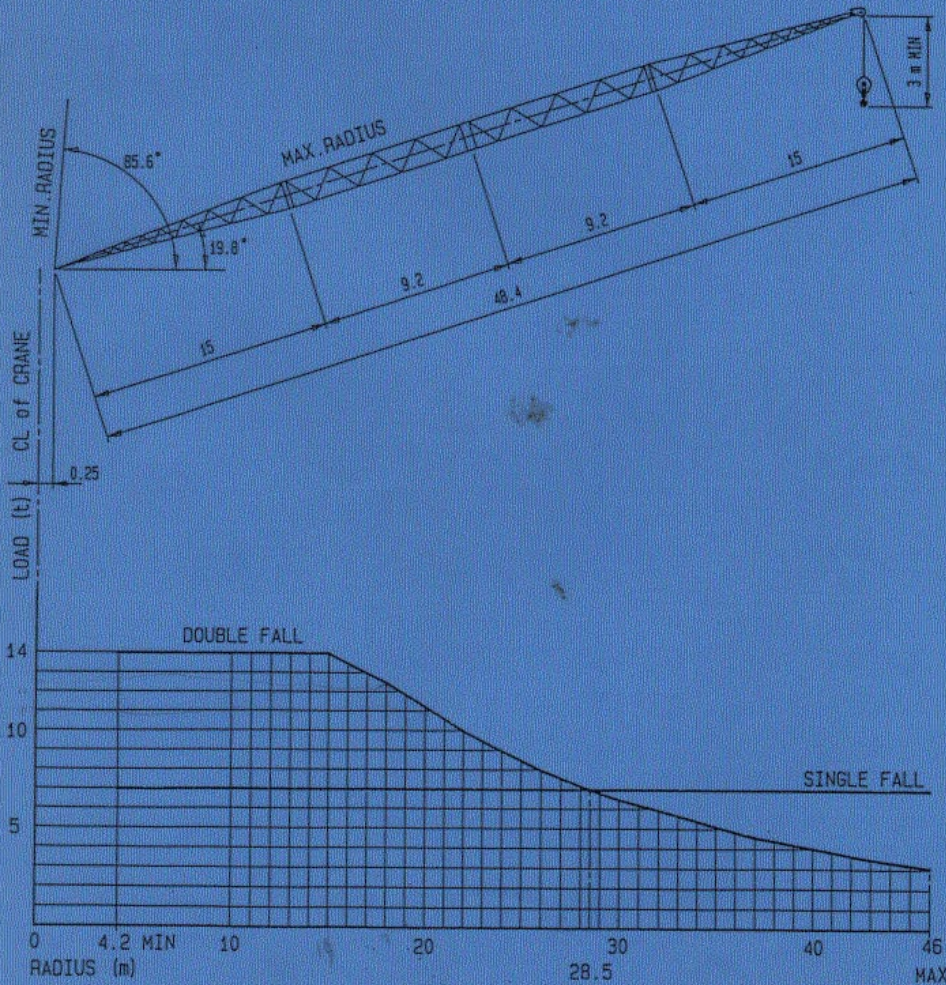


**FVELLE
FAVCO**

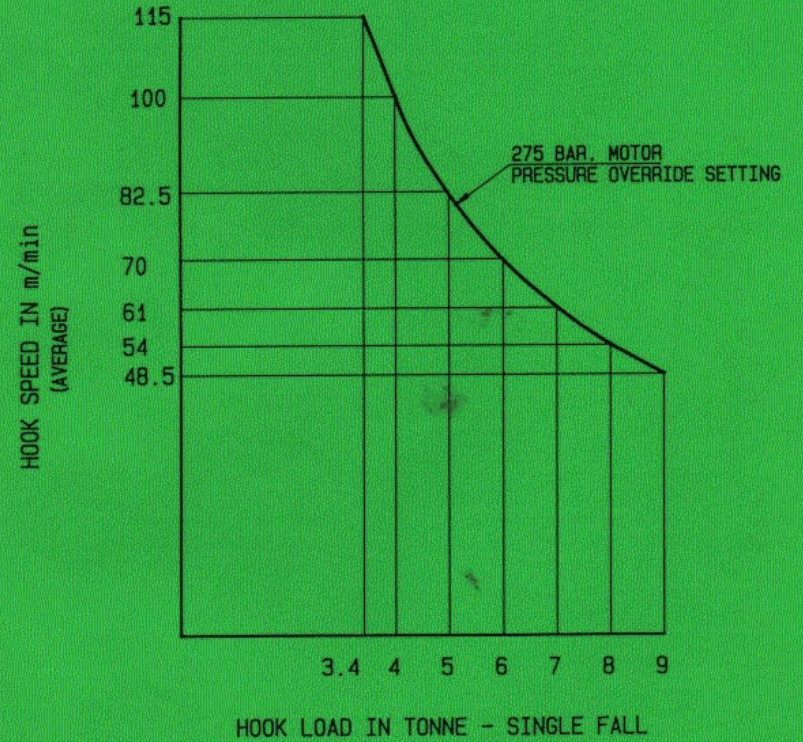
LOAD CHART M220D
BOOM LENGTH 48.4 m



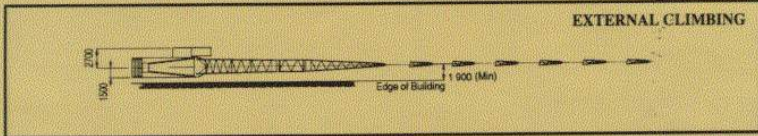
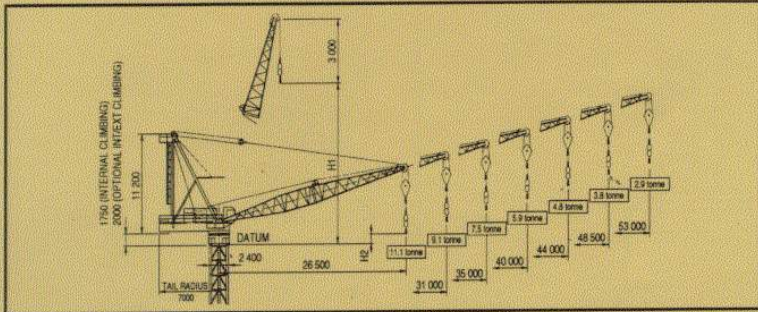
220-48-162A

**FVELLE
FAVCO**

HOIST WINCH PERFORMANCE CURVE
TYPE: 220.150.9.A

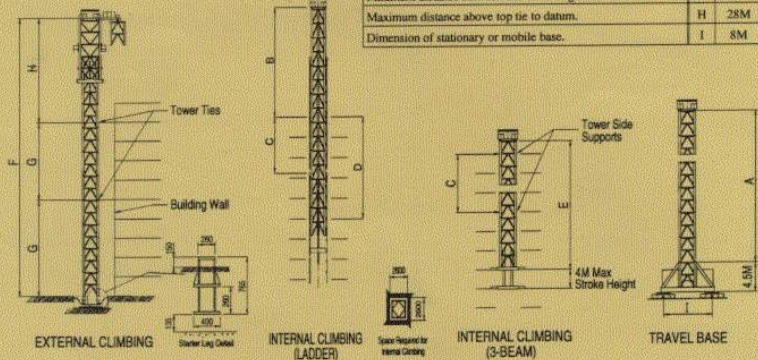


Dimensions



Tower dimensions applicable for in-service wind speeds up to 20 m/s & out-of-service wind speeds up to 42 m/s, tower type 225.
Alternate tower height configurations available upon request.

General Dimensions	225 Tower
Maximum freestanding height between travel base/ground to datum.	A 32M
Maximum distance above top collar to datum.	B 32M
Minimum distance between climbing collars.	C 12M
Maximum distance between climbing collars.	D 28M
Maximum distance from base to datum.	E 36M
Maximum freestanding height - external climbing (excluding ties)	F 28M
Minimum distance between ties or tie to ground.	G 12M
Maximum distance above top tie to datum.	H 28M
Dimension of stationary or mobile base.	I 8M



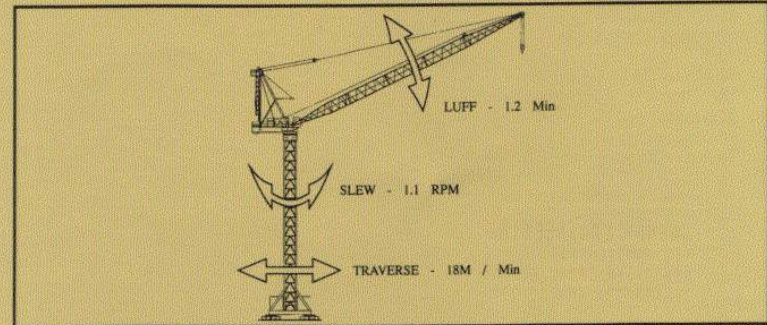
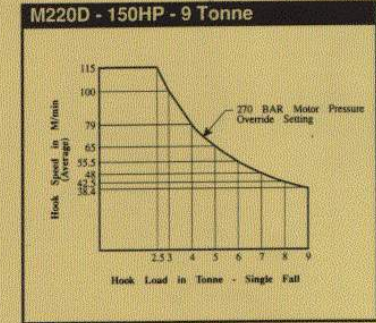
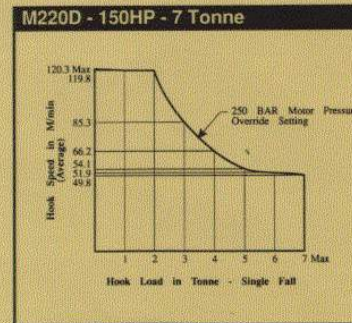
Radius & Capacity

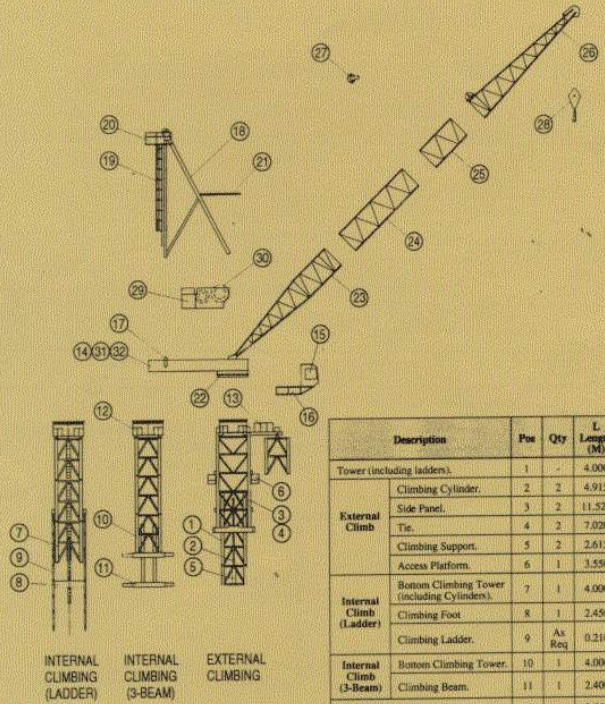
Boom Length (M)	Min Radius (M)	Max Radius (M)	Internal Climbing		Radius & Capacity (Tonne)																
			H1 (M)	H2 (M)	(7 Tonne & 9 Tonne Winches & 2-Fall Hook)																
55.0	4.7	-	55.2	17.1	14.3	14.3	14.3	14.3	12.2	10.6	9.3	8.2	7.2	6.4	5.7	5.1	4.6	4.1	3.7	3.3	3.0
50.4	4.2	16.5	50.6	15.7	18.0	18.0	17.2	14.5	12.5	10.9	9.5	8.4	7.5	6.7	6.0	5.4	4.9	4.4	4.0		
45.8	3.9	17.0	46.0	15.0	18.0	18.0	17.4	14.8	12.8	11.1	9.8	8.7	7.8	7.0	6.3	5.7	5.1				
41.2	3.7	17.2	41.4	12.4	18.0	18.0	17.7	15.1	13.0	11.4	10.1	8.9	8.0	7.2	6.5	5.9					
36.6	3.3	17.5	36.9	12.8	18.0	18.0	18.0	15.4	13.3	11.7	10.4	9.3	8.3	7.5							
32.0	3.0	17.7	32.3	10.3	18.0	18.0	18.0	15.6	13.6	12.0	10.6	9.5									
27.4	2.7	17.7	26.5	9.3	18.0	18.0	18.0	15.6	13.6	12.0											

Capacities shown within the shaded area at left, are indicative of a 9-Tonne winch. 7-Tonne winch capacities for the same range equal 14-Tonne.

Speeds

(Alternate Speed Configurations Available on Request)





Description	Pos	Qty	L Length (M)	B Width (M)	H Height (M)	Weight per Item (kg)	
Tower (including ladders)	1	-	4.000	2.400	2.400	3280	
External Climb	Climbing Cylinder	2	2	4.915	0.229	0.229	1100
	Side Panel	3	2	11.520	0.310	2.450	2667
	Tie	4	2	7.020	0.168	3.200	544
	Climbing Support	5	2	2.615	0.335	0.800	148
	Access Platform	6	1	3.550	1.073	1.235	199
Internal Climb (Ladder)	Bottom Climbing Tower (including Cylinders)	7	1	4.000	2.400	2.400	7750
	Climbing Foot	8	1	2.450	0.350	0.700	1025
Internal Climb (3-Beam)	Climbing Ladder	9	As Req	0.210	0.170	7.985	525
	Bottom Climbing Tower	10	1	4.000	2.400	2.400	5000
Internal Climb (3-Beam)	Climbing Beam	11	1	2.400	0.802	0.450	1330
	Slew Mount	12	1	2.550	2.550	2.000	4000
Monorail Beam & Trolley	13	1	7.430	1.680	1.400	1695	
M/C Deck	14	1	8.810	3.000	1.150	8000	
Cabin	15	1	1.380	1.100	2.100	1200	
Cabin Support	16	1	4.000	1.335	1.325	330	
Counterweights	17	8	2.000	1.000	0.160	2500	
Mast & Sheaves	18	1	11.900	2.500	0.840	2500	
Mast Ladder	19	1	8.000	0.812	0.843	178	
Mast Platform	20	1	2.235	1.285	1.175	295	
Boom Buffer	21	1	3.142	0.215	2.100	257	
Slew Ring	22	1	2.235	2.235	0.142	851	
Bottom Jib Section	23	1	9.500	2.400	2.100	1101	
Jib Extension Section	24	1	9.400	2.150	2.150	1430	
Jib Extension Section	25	1	4.800	2.150	2.150	715	
Top Jib Section	26	1	9.400	2.150	2.150	1124	
Bridge	27	1	0.805	0.501	0.704	210	
2-Fall Hook	28	1	0.900	0.420	1.800	350	
Powerpack Winches	29	1	3.100	1.750	1.950	5000	
Hoist Rope	30	1	300	-	-	700	
Split Deck-Front	31	1	3.630	3.000	1.150	4500	
Split Deck-Back	32	1	4.350	3.000	1.150	3500	



FAVELLE FAVCO CRANES PTY LTD
A.C.N. 003 689 478 (Incorporated in N.S.W.)

Head Office
28 Yarrunga Street, Prestons
P.O. Box 456, Liverpool N.S.W. 2170, Australia
Telephone: 61-2-608-2000 Fax: 61-2-607-0022

Distributed By:
BACKAM ENGINEERING
196, JAMSIL-DONG,
SONGPA-KU, SEOUL, KOREA
TEL 4207791 FAX 4207790