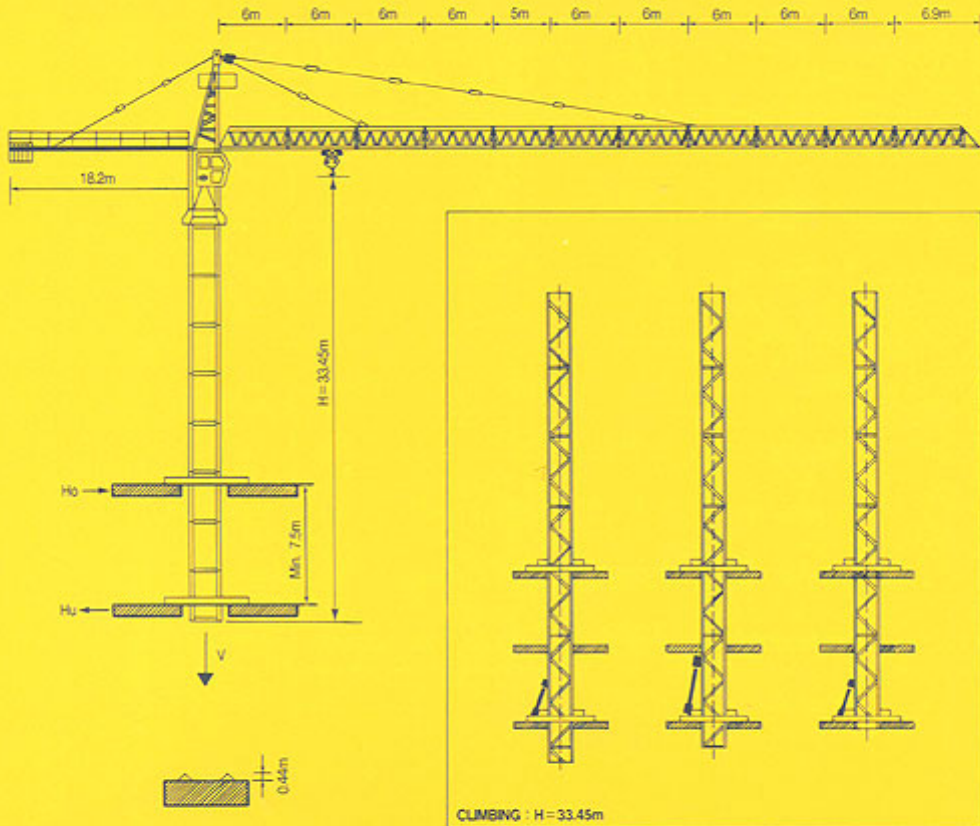




# CLIMBING



CLIMBING : H = 33.45m

POWER SOURCE		WINCH TYPE		THREE PHASE CURRENT		
70Kw		AWLR 506		380V-60Hz		
Winch	m/min	t	Hp	Kw		
AWLR 506		0 → 33	6	50	37	430m max
		0 → 44	4.6			
		0 → 57	3.5			
		0 → 84	2.4			
		0 → 16.5	12			>430 Consult us
		0 → 22	9.2			
		0 → 28.5	7			
		0 → 42	4.8			
TROLLEY		C3V	0-22-44-88m/min	6/5Kgm	6Kw	
SLEWING		GVP	0.8R.P.m	2 × 7.5Kgm	2 × 5.5Kgm	
TRAVELLING		TR-TC	0-12-24m/min	4 × 5.4Kgm	4 × 4Kw	

# KTC6512

## PACKING LIST

ITEM	QUANTITY	DESCRIPTION	LENGTH (M)	WIDTH (M)	HEIGHT (M)	UNIT WEIGHT(KG)	TOTAL WEIGHT(KG)
1	1	BASIC MAST	7.5	2.28	2.28		3590
2	2	MAST(A)	3.75	2.28	2.28	1780	3560
3	11	MAST(B)	3.75	2.28	2.28	1710	18810
4	1	TELESCOPIC CAGE	9	2.84	2.58		4480
5	1	SLEWING UNIT	1.4	2.28	2.28		5670
6	1	CABIN MAST	3.9	1.48	1.48		2410
7	1	CABIN	2	1.23	1.64		300
8	1	TOWER HEAD	6.785	1.48	1.35		2325
9	1	COUNTER-JIB(A)	8.67	1.35	0.54		2040
10	1	COUNTER-JIB(B)	8.47	1.35	0.54		2080
11	1	JIB SECTION(1)	6	1.44	1.405		765
12	8	JIB SECTION(2~9)	6	1.44	1.405		6646
13	1	JIB SECTION(5A)	5	1.44	1.405		631
14	1	JIB SECTION(10)	6.09	1.44	1.405		557
15	1	JIB END	1.405	0.45	1.44		100
16	1	TROLLEY	5.1	1.619	1.8		627
17	1	HOIST WINCH	1.62	1.58	1.39		1940