

**K-68
K-110
K-160
K-250D
K-80L
K-300L
K-500L**

KRØLL GIANT CRANES

*-the Worldwide Giant
in Tower Cranes*

The Cranes of Tomorrow for Today's Work

KRØLL GIANT CRANES A/S has underlined its position as one of the world's leading manufacturers of cranes by extending the product line to range from K-68 to K-25.000.

The new generation of medium capacity tower and luffing cranes consists of K-68, K-110, K-160, K-250D, K-80L, K-300L and K-500L ranging from a 68 tm capacity tower cranes to a 500 tm capacity luffing crane. All cranes can be supplied fitted as freestanding, travelling or climbing cranes.

In both design and construction the new KGC-crane are achievements of modern technology and engineering.

The crane control system is PLC-based (Programmable Logical Controller) to secure optimum reliability and safety, and faults are easily located on a control display in the cabin. All security devices are double-checked.

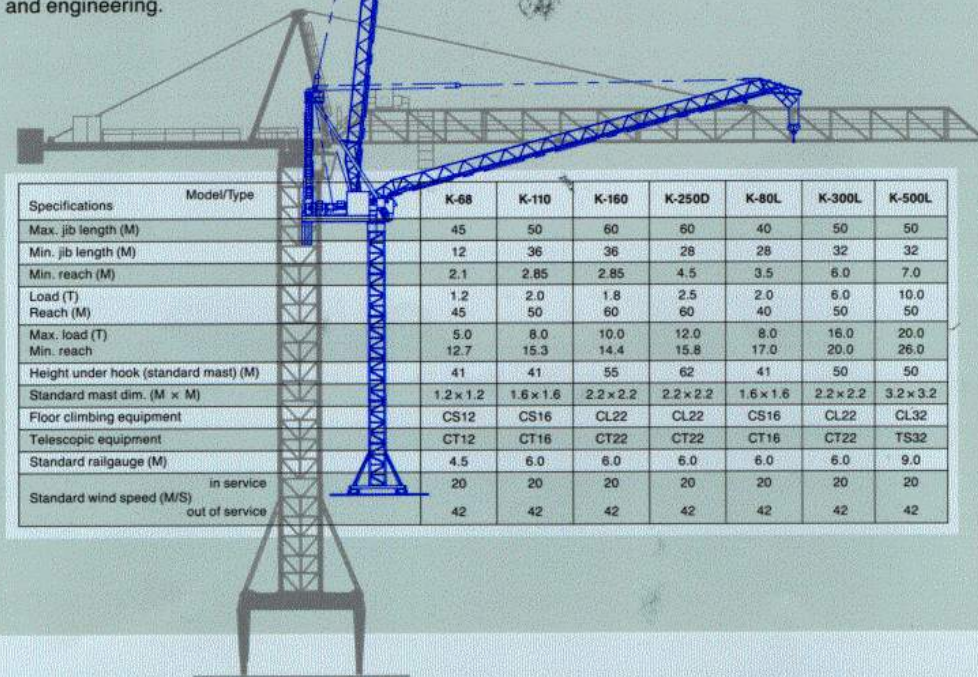
All crane motions are equipped with stepless controlled speed regulations.

A KGC-crane is of course fitted with safety equipment according to statutory regulations and has as standard indication instruments for load, moment, trolley position, hook position and wind speed.

The cabin is designed to give the operator optimum survey of the site and high comfort under all climatic conditions.

Please state your requirements and we will provide you with the right answer to your needs.

- ① KGC-crane on site near Copenhagen.
- ② KGC-crane at work in Denmark.
- ③ D.C. hoist winch on K-160 from the new Generation.
- ④ Modern crane cabin.
- ⑤ The trolley and hook on K-160.
- ⑥ K-160 on site.



Specifications	Model/Type	K-68	K-110	K-160	K-250D	K-80L	K-300L	K-500L
Max. jib length (M)		45	50	60	60	40	50	50
Min. jib length (M)		12	36	36	28	28	32	32
Min. reach (M)		2.1	2.85	2.85	4.5	3.5	6.0	7.0
Load (T)		1.2	2.0	1.8	2.5	2.0	6.0	10.0
Reach (M)		45	50	60	60	40	50	50
Max. load (T)		5.0	8.0	10.0	12.0	8.0	16.0	20.0
Min. reach		12.7	15.3	14.4	15.8	17.0	20.0	26.0
Height under hook (standard mast) (M)		41	41	55	62	41	50	50
Standard mast dim. (M x M)		1.2 x 1.2	1.6 x 1.6	2.2 x 2.2	2.2 x 2.2	1.6 x 1.6	2.2 x 2.2	3.2 x 3.2
Floor climbing equipment		CS12	CS16	CL22	CL22	CS16	CL22	CL32
Telescopic equipment		CT12	CT16	CT22	CT22	CT16	CT22	TS32
Standard railgauge (M)		4.5	6.0	6.0	6.0	6.0	6.0	9.0
Standard wind speed (M/S)	in service	20	20	20	20	20	20	20
	out of service	42	42	42	42	42	42	42

