

KH310

EVERDIGM Tower Crane

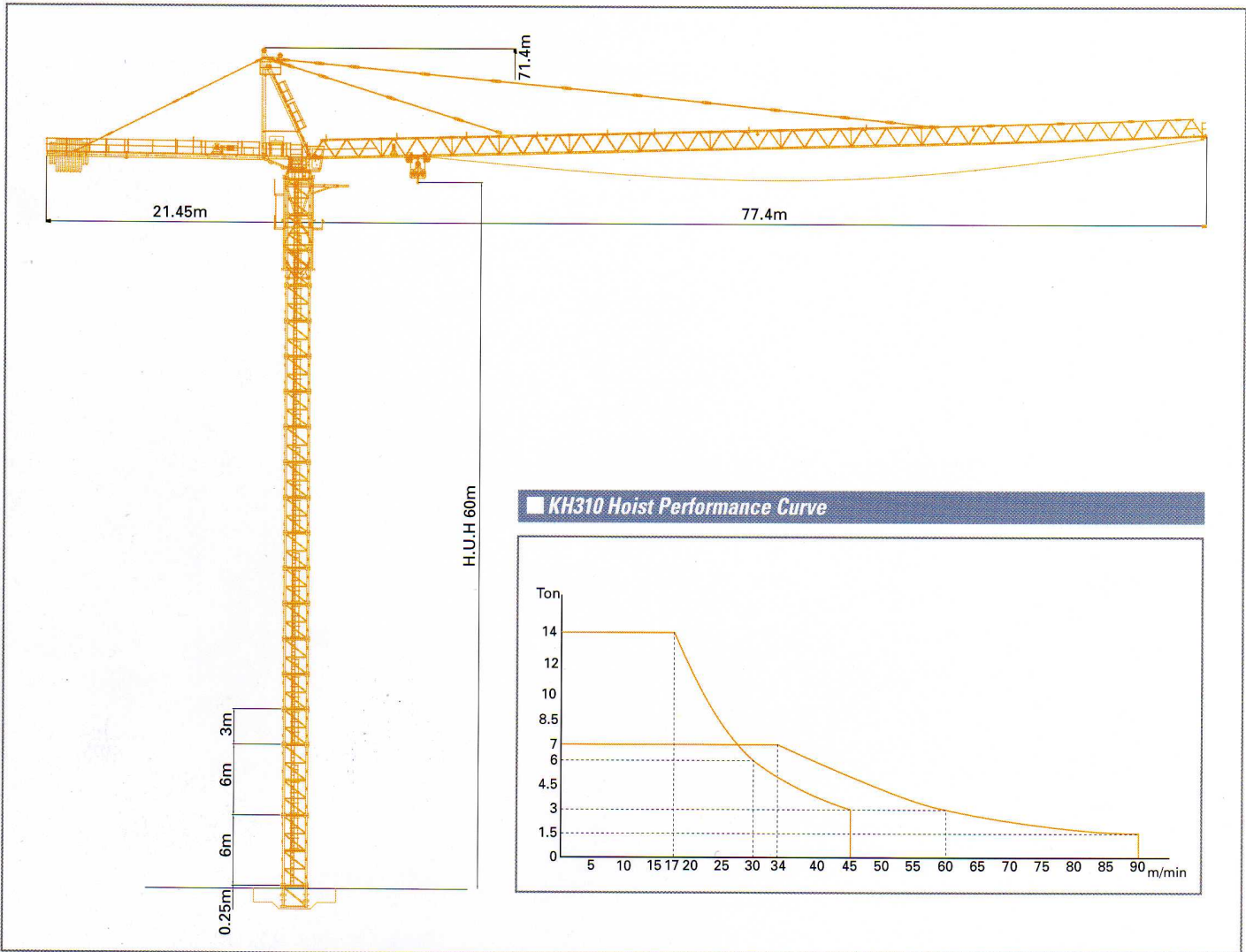
- Maximum Mast Height : 252M
- Maximum Load : 14 Ton
- Maximum Working Radius : 75 m
- Free Standing H.U.H : 60 m



EVERDIGM

[주]에버다임

KH310 Assembly



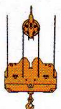
KH 310 Technical Data

Hoist Winch 45kW - AC - Stepless

2 line parts reeve	0 - 1500 kg	0 - 90 m/min
	1500 - 3000 kg	0 - 60 m/min
	3000 - 7000 kg	0 - 34 m/min

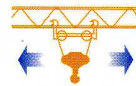


4 line parts reeve	0 - 3000 kg	0 - 45 m/min
	3000 - 6000 kg	0 - 30 m/min
	6000 - 14000 kg	0 - 17 m/min



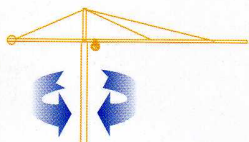
Trolley Winch 6.6kW - AC - Stepless

Speed	0 - 6000 kg	0 - 70 m/min
	6000 - 14000 kg	0 - 35 m/min



Slewing Machinery - 4 Drive Units - Stepless

Speed (4 x 4kw - AC)	0 - 0.67 rpm
----------------------	--------------



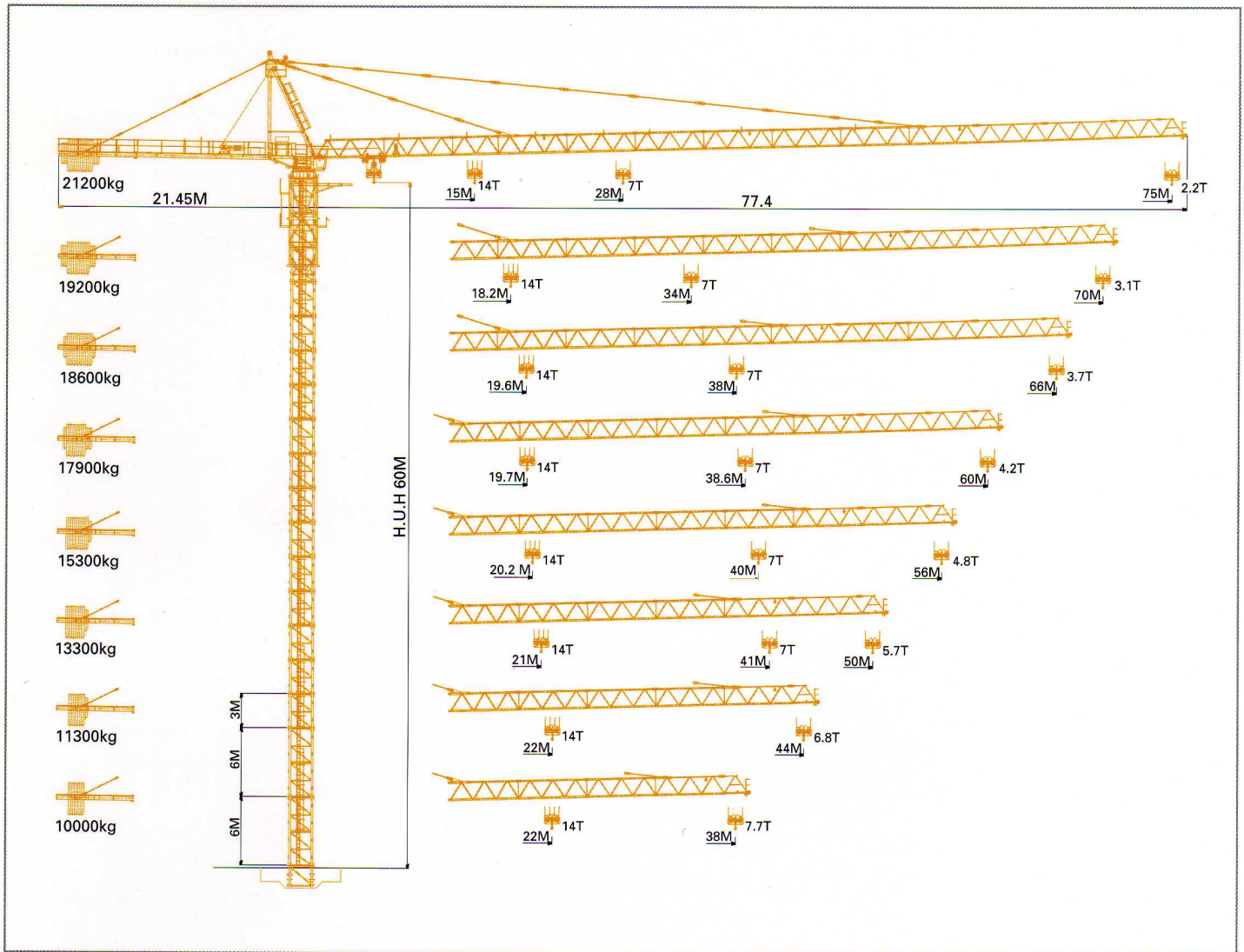
Electrical Information

Power supply	3ph x 380V , 50/60Hz (Standard)
	3ph x 440V , 50/60Hz (Option)



Control circuit	24Vdc - 48Vac
Power consumption	100KVA
Power cable	60SQ x 4core (2PNCT) (50SQ x 4core (PNCT))

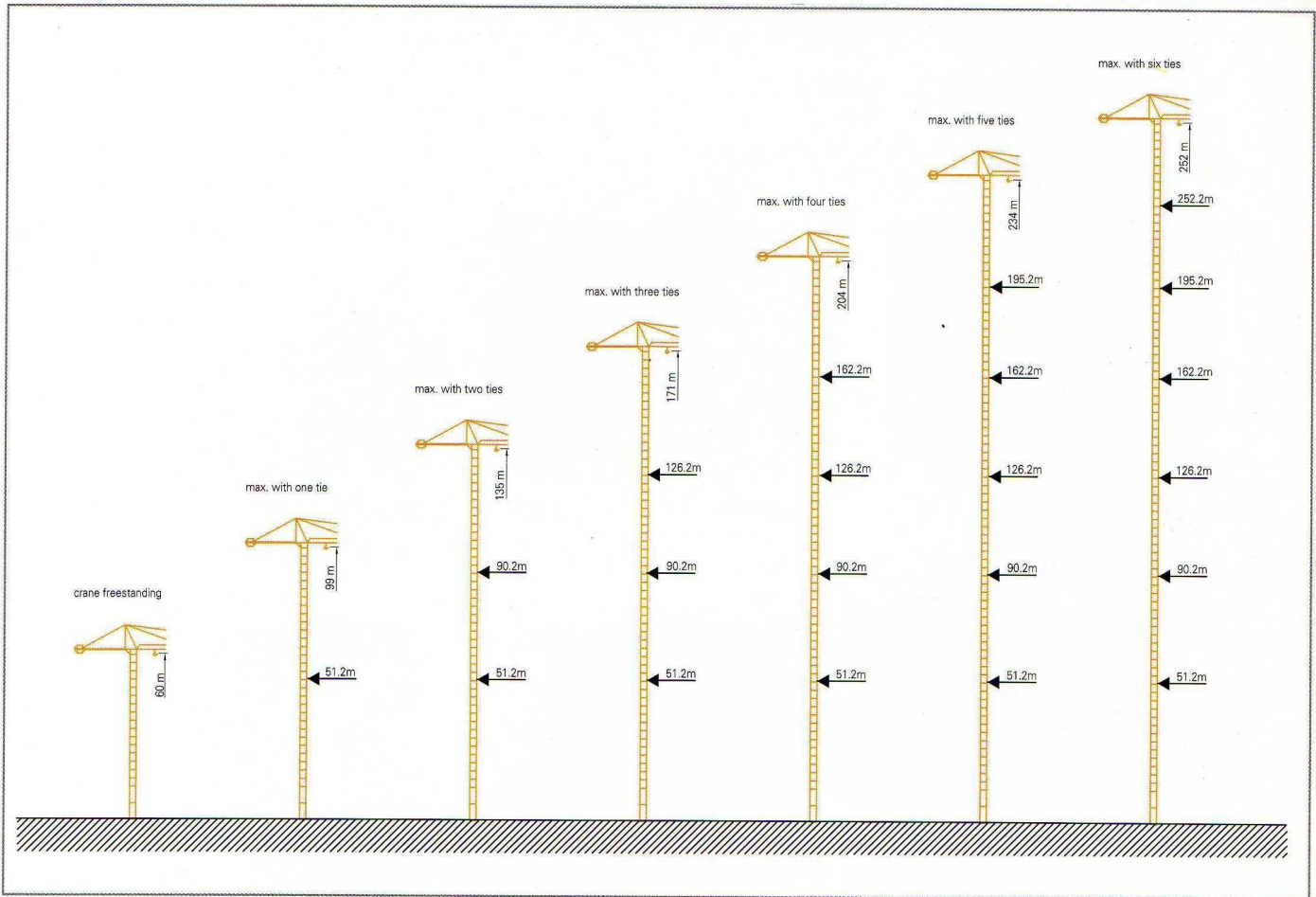
KH310 JIB Combination



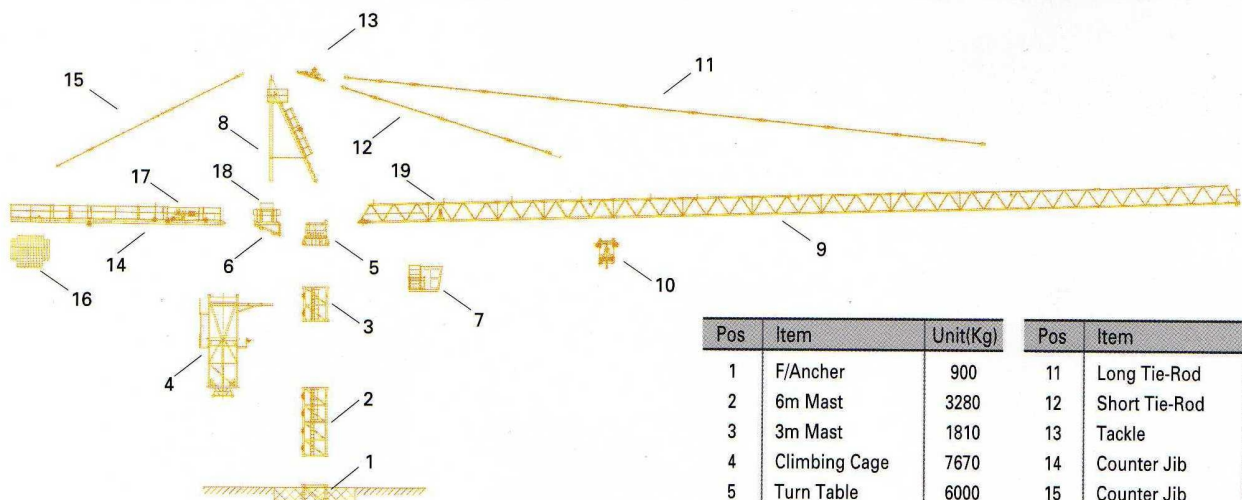
KH 310 Load Capacity

JIB Length	Max Capacity (ton)											
	14ton	20M	25M	30M	38M	44M	50M	56M	60M	66M	70M	75M
75M	15m	10.0	7.7	6.7	5.1	4.3	3.7	3.2	2.9	2.6	2.4	2.2
70M	18m	12.5	9.7	7.8	6.4	5.4	4.6	4.1	3.7	3.3	3.1	
66M	19m	13.8	10.7	8.6	7.0	5.9	5.1	4.5	4.1	3.7		
60M	20m	14.0	10.8	8.7	6.8	6.0	5.2	4.6	4.2			
56M	21m	14.0	11.4	9.2	7.1	6.3	5.5	4.8				
50M	21m	14.0	11.8	9.6	7.3	6.6	5.7					
44M	22m	14.0	12.3	10.0	7.5	6.8						
38M	22m	14.0	12.4	10.1	7.7							

KH310 Tie Schedule



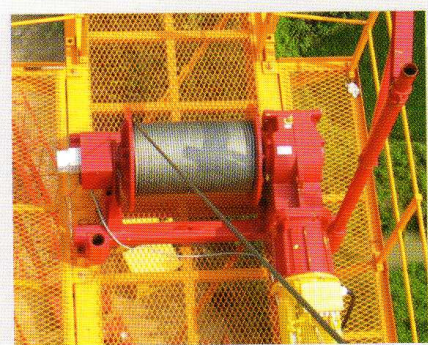
KH 310 Approx. Erection Weight



Pos	Item	Unit(Kg)	Pos	Item	Unit(Kg)
1	F/Ancher	900	11	Long Tie-Rod	2100
2	6m Mast	3280	12	Short Tie-Rod	770
3	3m Mast	1810	13	Tackle	630
4	Climbing Cage	7670	14	Counter Jib	4090
5	Turn Table	6000	15	Counter Jib	770
6	Panel Frame	1615		Tie-rod	
7	Cabin & Platform	1100	16	Counter Weight	21200
8	Top Tower	2880	17	Hoist Winch	1610
9	Jib	9620	18	Electric Panel	350
10	Trolley & Hook	990	19	Trolley Winch	320

에버다임 타워크레인 KH310

작업의 품격을 한단계 높여주는 에버다임 타워크레인 KH 310은 KROLL의 최정상 품질과 기술력을 바탕으로 동급 최대의 CAPACITY와 높이 그리고 편안한 운전실등 최첨단 시스템 적용으로 최상의 상태에서 편안한 작업이 가능합니다.



● 중량 비례 속도제어에 의한 HOIST WINCH 성능의 극대화 및 상용 전원 사용



● 편리하고 안전한 웨이트 고정 - 주변 GUARD 설치



● 스테인레스 판넬 채택 - 부식 방지, 외관 수려



● 싱글 트롤리 적용, 편리한 와이어 줄 수 교체 방식



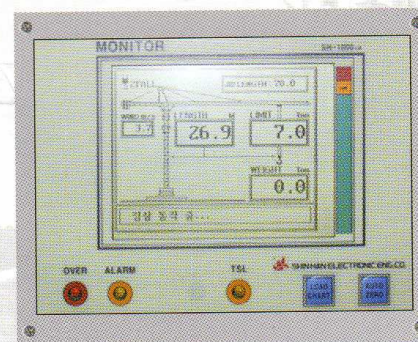
● 강력하고 흔들림이 없는 선회동작



● 전동작 최첨단 INVERTER SYSTEM 에 의한 정속, 미세제어



● 운전자의 편의성을 고려한 넓고 DELUXE 한 최고급 운전실



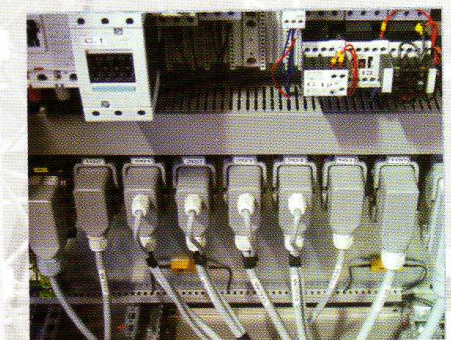
● LCD 모니터를 통한 중앙집중형 MONITORING SYSTEM



● 슬립링 전원 공급 시스템 적용



● 자동 점멸 항공장애등 및 실시간 풍속 계측 시스템 적용



● 외부 연결 커넥터의 판넬 내부 삽입

JIB Radius (M)	75M		70M		66M		60M		56M		50M		44M		38M	
	D	S	D	S	D	S	D	S	D	S	D	S	D	S	D	S
15	14,000	7,000	14,000	7,000	14,000	7,000	14,000	7,000	14,000	7,000	14,000	7,000	14,000	7,000	14,000	7,000
16	13,000	7,000	14,000	7,000	14,000	7,000	14,000	7,000	14,000	7,000	14,000	7,000	14,000	7,000	14,000	7,000
17	12,120	7,000	14,000	7,000	14,000	7,000	14,000	7,000	14,000	7,000	14,000	7,000	14,000	7,000	14,000	7,000
18	11,330	7,000	14,000	7,000	14,000	7,000	14,000	7,000	14,000	7,000	14,000	7,000	14,000	7,000	14,000	7,000
19	10,640	7,000	13,290	7,000	14,000	7,000	14,000	7,000	14,000	7,000	14,000	7,000	14,000	7,000	14,000	7,000
20	10,020	7,000	12,530	7,000	13,790	7,000	13,960	7,000	14,000	7,000	14,000	7,000	14,000	7,000	14,000	7,000
21	9,460	7,000	11,840	7,000	13,040	7,000	13,200	7,000	13,880	7,000	14,000	7,000	14,000	7,000	14,000	7,000
22	8,950	7,000	11,220	7,000	12,360	7,000	12,520	7,000	13,160	7,000	13,699	7,000	14,000	7,000	14,000	7,000
23	8,490	7,000	10,660	7,000	11,750	7,000	11,890	7,000	12,510	7,000	13,023	7,000	13,510	7,000	13,550	7,000
24	8,070	7,000	10,140	7,000	11,180	7,000	11,330	7,000	11,910	7,000	12,406	7,000	12,890	7,000	12,940	7,000
25	7,680	7,000	9,670	7,000	10,670	7,000	10,800	7,000	11,370	7,000	11,840	7,000	12,270	7,000	12,350	7,000
26	7,330	7,000	9,240	7,000	10,200	7,000	10,320	7,000	10,860	7,000	11,320	7,000	11,740	7,000	11,840	7,000
27	7,050	7,000	8,840	7,000	9,760	7,000	9,880	7,000	10,400	7,000	10,839	7,000	11,220	7,000	11,340	7,000
28	6,800	7,000	8,470	7,000	9,350	7,000	9,470	7,000	9,970	7,000	10,394	7,000	10,760	7,000	10,910	7,000
29	6,610	6,910	8,120	7,000	8,980	7,000	9,090	7,000	9,570	7,000	9,980	7,000	10,310	7,000	10,470	7,000
30	6,350	6,650	7,800	7,000	8,630	7,000	8,740	7,000	9,200	7,000	9,590	7,000	9,920	7,000	10,090	7,000
31	6,110	6,410	7,500	7,000	8,300	7,000	8,410	7,000	8,860	7,000	9,230	7,000	9,530	7,000	9,710	7,000
32	5,880	6,180	7,230	7,000	8,000	7,000	8,100	7,000	8,530	7,000	8,900	7,000	9,180	7,000	9,380	7,000
33	5,670	5,970	7,030	7,000	7,710	7,000	7,810	7,000	8,230	7,000	8,580	7,000	8,840	7,000	9,050	7,000
34	5,460	5,760	6,850	7,000	7,440	7,000	7,540	7,000	7,950	7,000	8,290	7,000	8,540	7,000	8,750	7,000
35	5,270	5,570	6,680	6,980	7,210	7,000	7,290	7,000	7,680	7,000	8,010	7,000	8,230	7,000	8,460	7,000
36	5,100	5,400	6,460	6,760	7,050	7,000	7,100	7,000	7,420	7,000	7,750	7,000	7,960	7,000	8,200	7,000
37	4,930	5,230	6,250	6,550	6,900	7,000	6,950	7,000	7,240	7,000	7,500	7,000	7,700	7,000	7,960	7,000
38	4,770	5,070	6,060	6,360	6,700	7,000	6,790	7,000	7,060	7,000	7,260	7,000	7,450	7,000	7,700	7,000
39	4,620	4,920	5,870	6,170	6,500	6,800	6,590	6,890	6,890	7,000	7,100	7,000	7,180	7,000		
40	4,470	4,770	5,700	6,000	6,310	6,610	6,390	6,690	6,720	7,000	6,950	7,000	7,000	7,000		
41	4,340	4,640	5,530	5,830	6,130	6,430	6,210	6,510	6,550	6,850	6,800	7,000	6,850	7,000		
42	4,210	4,510	5,370	5,670	5,950	6,250	6,030	6,330	6,360	6,660	6,640	6,940	6,700	7,000		
43	4,080	4,380	5,220	5,520	5,790	6,090	5,870	6,170	6,190	6,490	6,460	6,760	6,600	6,900		
44	3,970	4,270	5,080	5,380	5,630	5,930	5,710	6,010	6,020	6,320	6,280	6,580	6,500	6,800		
45	3,850	4,150	4,940	5,240	5,480	5,780	5,560	5,860	5,850	6,150	6,120	6,420				
46	3,750	4,050	4,810	5,110	5,340	5,640	5,410	5,710	5,710	6,010	5,960	6,260				
47	3,640	3,940	4,680	4,980	5,200	5,500	5,270	5,570	5,570	5,870	5,810	6,110				
48	3,550	3,850	4,560	4,860	5,070	5,370	5,140	5,440	5,430	5,730	5,670	5,970				
49	3,450	3,750	4,450	4,750	4,940	5,240	5,010	5,310	5,290	5,590	5,530	5,830				
50	3,360	3,660	4,340	4,640	4,820	5,120	4,890	5,190	5,170	5,470	5,400	5,700				
51	3,270	3,570	4,230	4,530	4,710	5,010	4,770	5,070	5,040	5,340						
52	3,190	3,490	4,130	4,430	4,600	4,900	4,660	4,960	4,920	5,220						
53	3,110	3,410	4,030	4,330	4,490	4,790	4,550	4,850	4,810	5,110						
54	3,030	3,330	3,930	4,230	4,390	4,690	4,450	4,750	4,700	5,000						
55	2,960	3,260	3,840	4,140	4,290	4,590	4,350	4,650	4,600	4,900						
56	2,890	3,190	3,760	4,060	4,190	4,490	4,250	4,550	4,500	4,800						
57	2,820	3,120	3,670	3,970	4,100	4,400	4,160	4,460								
58	2,750	3,050	3,590	3,890	4,010	4,310	4,070	4,370								
59	2,690	2,990	3,510	3,810	3,920	4,220	3,980	4,280								
60	2,630	2,930	3,430	3,730	3,840	4,140	3,900	4,200								
61	2,570	2,870	3,360	3,660	3,760	4,060										
62	2,510	2,810	3,290	3,590	3,680	3,980										
63	2,450	2,750	3,220	3,520	3,610	3,910										
64	2,400	2,700	3,150	3,450	3,530	3,830										
65	2,340	2,640	3,090	3,390	3,460	3,760										
66	2,290	2,590	3,030	3,330	3,400	3,700										
67	2,240	2,540	2,970	3,270												
68	2,200	2,500	2,910	3,210												
69	2,150	2,450	2,850	3,150												
70	2,100	2,400	2,800	3,100												
71	2,060	2,360														
72	2,020	2,320														
73	1,980	2,280														
74	1,930	2,230														
75	1,900	2,200														

★ 상기 제원은 성능개선을 위해서 예고없이 변경될수 있습니다.



www.everdigm.com

본사 및 공장 :
충북 진천군 진천읍 장관리 332-3
TEL : (043) 530-3490-7 FAX : (043) 530-3489

Sales & Marketing :
Room #1203, Woolim Lion's Valley II
680 Gasan-Dong, Geumcheon-Gu, Seoul, Korea
Tel : +82-2-801-0750 Fax : +82-2-801-0799

서울 사무소 :
서울 금천구 가산동 680우림 라이온스밸리 II 1203호
TEL : (02) 801-0750 FAX : (02) 801-0799

Factory & Head Office :
332-3, Janggwan-ri, Jincheon-eub, Jincheon-gun,
Chungcheongbuk-do, Korea
TEL : +82-43-530-3490-7 FAX : +82-43-530-3489

ETC KH310 0704