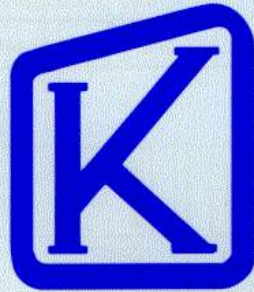
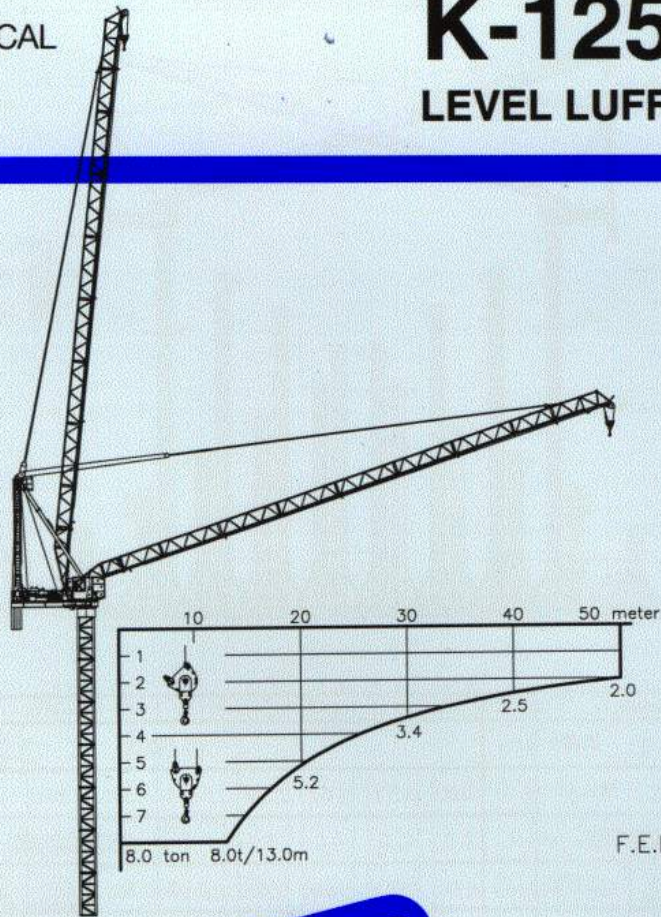


TECHNICAL  
DATA

# K-125L

## LEVEL LUFFER



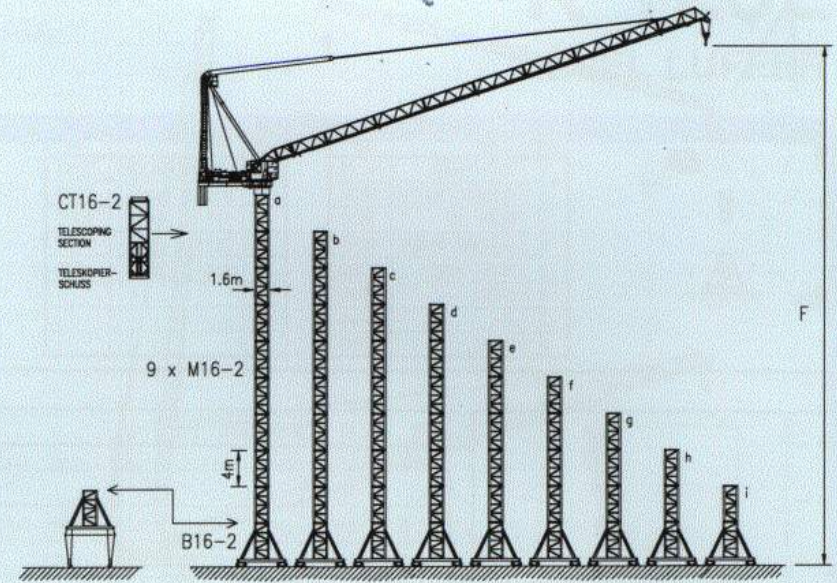
### KRØLL CRANES A/S

Nordkranvej 2 · DK-3540 Lyngø · Denmark · Phone: +45 48 18 74 00 · Fax: +45 48 18 88 07

A member of the Muhibbah Engineering Group



### K-125L ON RAILS / AUF SCHIENEN



HOOK HEIGHT / HAKENHÖHE	F	m	a	b	c	d	e	f	g	h	i
RAIL GAUGE SPURWEITE	6										
BALLAST	t	100	77	57	38	30	30	30	30	30	30
PARKING FOUNDATIONS PARKIERUNGSFUNDAMENTE *x4	t	0	0	0	0	0	0	0	0	0	0
CORNER PRESSURE ECKDRUCK	IN SERVICE IM BETRIEB	kN	780	700	660	620	590	560	530	510	500
	OUT OF SERVICE AUSSER BETRIEB	kN	1130	980	830	700	580	470	380	290	220

⚡	3 x 400 V - 50 Hz	CONTROL VOLTAGE / STEUER SPANNUNG
	3 x 440 V - 60 Hz	24 VDC - 220 VAC

	1 x 5 kW	0 - 0.7 RPM
--	----------	-------------

	HOIST WINCH / HUBWERK	56 kW
	POWER CONSUMPTION / STROMVERBRAUCH	150 kW 160 Amps
POWER CABLE HAUPTKABEL	0-100 m	4G70
	100-175 m	4G70
	175-250 m	4G85

	16°-84°	56 kW	STEPLESS STUFENLOS 1:10 min
		4 x 3 kW	25 m/min

	0-2000 kg	0 - 120 m/min
	0-4000 kg	0 - 70 m/min
	0-4000 kg	0 - 60 m/min
	0-8000 kg	0 - 35 m/min

HOIST ROPE HUB-SEIL	ø18 mm - FILL FACTOR 0.65 - 1770 MPa BREAKING STRESS 56 kW HOIST WINCH 350 m >350 m *	BRUCHSPANNUNG
LUFFING WIRE EINZIELSEIL	ø18 mm - FILL FACTOR 0.65 - 1770 MPa BREAKING STRESS	

\* CONSULT KRØLL - NEHMEN SIE MIT KRØLL KONTAKT AUF

