

사 양 서  

---

  
(Specification)

JTC1470  
타워크레인

1. 품 명 : T형 타워크레인
2. 모 델 : JTC1470
3. 규 격

구 분		사 양
용 량	RATED LOAD	Max. capacity : 14TON 70M Jib end : 3.05TON Load chart 1매 - 별첨 #A 참조
	RADIUS	MAX. : 70M
	양 정	Static Type Max. 242.4M(H.U.H) Free Standing Max. 59.4(H.U.H)
권 상 (HOISTING)	제어방식	인버터 (제작사 : Telemecanique, 프랑스)
	SPEED(단별)	5단 : 7-21-35-60-80M/MIN(2FALL) 5단 : 3-10-17-30-40M/MIN(4FALL)
	WIRE ROPE	Φ16, 19X7
	MOTOR	48KW X 4P (제작사 : Leroy somer, 프랑스)
	WINCH	EC3401MN I=1/45.78
횡 행 (TROLLEY)	제어방식	인버터 (제작사 : Telemecanique, 프랑스)
	SPEED(단별)	3단 : 13-40-65M/MIN
	WIRE ROPE	Φ9, 6X25(FI)
	MOTOR	7.5KW X 4P
	WINCH	I=1/49
선 회 (SLEWING)	제어방식	EC(Eddy Current) 제어방식
	SPEED(단별)	3단 : 0.26-0.48-0.7RPM
	MOTOR	4KW X 4P X 3개
	REDUCER	I=1/159.4
상 승 (CLIMBING)	SPEED	690MM/MIN
	MOTOR	11KW X 4P X 380V X 60HZ
	HYD. CYLINDER	Φ160XΦ120X1880ST
전 기	공급 전압	AC380V
	제어 전압	AC48V
	동력 케이블 사양	2PNCTx50sq(60sq)x4Cx600V

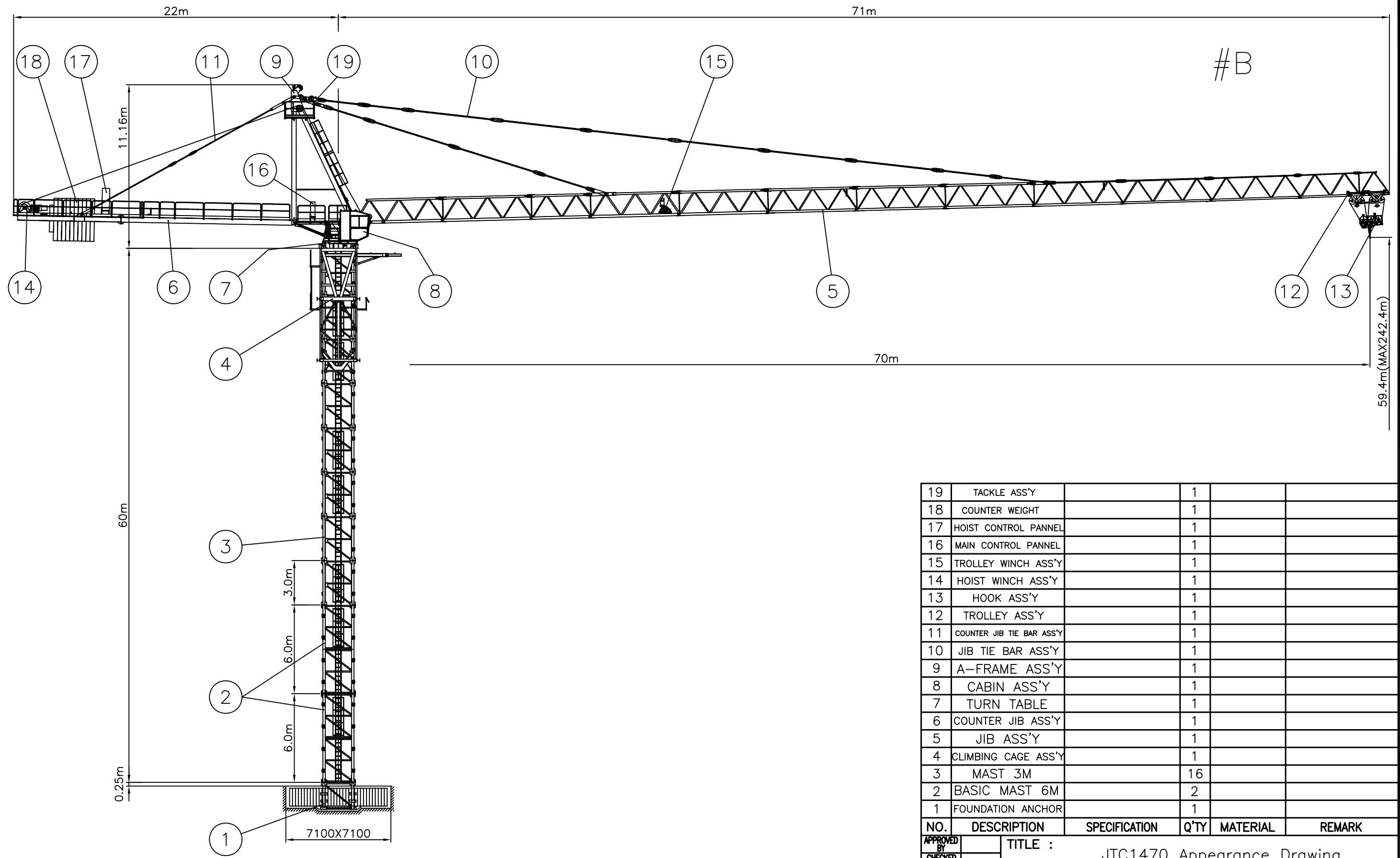
#### 4. 구성품 리스트

※ 외 관 도 - 별첨 #3 참조

- 1) Foundation anchor (기초 양카) - 1EA
- 2) Basic mast (베이직 마스트, 6m) - 2EA
- 3) Mast (마스트, 3m) - 16EA
- 4) Climbing cage ass'y (Including hyd. power pack) - 1SET --> 마스트 상승장치
- 5) Jib ass'y (No1~13, End jib, Including trolley wintch with limit box) - 1SET
- 6) Counterjib ass'y (Including counter weight : AW-2022kg 10EA,  
BW-1296kg 1EA & hoist wintch with limit box) - 1SET
- 7) Turn table ass'y w/o slip ring (좌,우회전 각방향 2회전으로 제한됨) - 1SET  
(Including slewing limit box)
- 8) Cabin ass'y (Including aircon & heater & auto moment indicator) - 1SET
- 9) A-frame ass'y (Including 항공장애등)- 1SET
- 10) Jib Tie bar ass'y - 1SET
- 11) Counter jib Tie bar ass'y - 1SET
- 12) Trolley ass'y -1SET
- 13) Hook ass'y - 1SET
- 14) Hoist winch ass'y - 1SET
- 15) Trolley winch ass'y - 1SET
- 16) Main electric cable (메인 입력 전선, 60sqx4c) - 100M
- 17) Hex. bolt with flat washer & nut & rubber cap(M45x440) - 152SETS  
--> For joining masts (마스트 조립용)
- 18) Wire rope set - 1SET  
Hoist rope :  $\Phi 16 \times 500M$   
Trolley rope :  $\Phi 9 \times 99M, \Phi 9 \times 127M$   
Safety rope :  $\Phi 8 \times 70M$
- 19) Standard supply list (표준지급품)
  - ① Socket wedge 5/8" (로프 고정장치) - 1EA
  - ② Socket wedge 3/8" (로프 고정장치) - 1EA
  - ③ Anti-twist device (로프 꼬임방지 장치) - 1EA
  - ④ Grease gun with grease (그리스건) - 1SET-
  - ⑤ Load flag panel - 8EA
  - ⑥ Hook for mast lifting- 1EA



MARK	REVISIONS	REASONABLE REVISIONS	DATE	NAME	SIGN
▲					



19	TACKLE ASS'Y		1		
18	COUNTER WEIGHT		1		
17	HOIST CONTROL PANNEL		1		
16	MAIN CONTROL PANNEL		1		
15	TROLLEY WINCH ASS'Y		1		
14	HOIST WINCH ASS'Y		1		
13	HOOK ASS'Y		1		
12	TROLLEY ASS'Y		1		
11	COUNTER JIB TIE BAR ASS'Y		1		
10	JIB TIE BAR ASS'Y		1		
9	A-FRAME ASS'Y		1		
8	CABIN ASS'Y		1		
7	TURN TABLE		1		
6	COUNTER JIB ASS'Y		1		
5	JIB ASS'Y		1		
4	CLIMBING CAGE ASS'Y		1		
3	MAST 3M		16		
2	BASIC MAST 6M		2		
1	FOUNDATION ANCHOR		1		

NO.	DESCRIPTION	SPECIFICATION	Q'TY	MATERIAL	REMARK
APPROVED BY	TITLE : JTC1470 Appearance Drawing				
CHECKED BY	SCALE	1/170	FORMAT	A2	DRAWING NO.
DESIGNED BY	DATE	10.06.10	3RD ANGLE PROJECTION		ITEM NO.
DRAWN BY	CUSTOMER			PART NO.	
JUNJIN HEAVY INDUSTRY CO., LTD					

"본도면은 전진중공업(주)의 중요한 재산으로 사전협의나 통보없이 무단복제시 형사상 책임을 다한다."