

TOPKIT H30 / 30C 60HZ

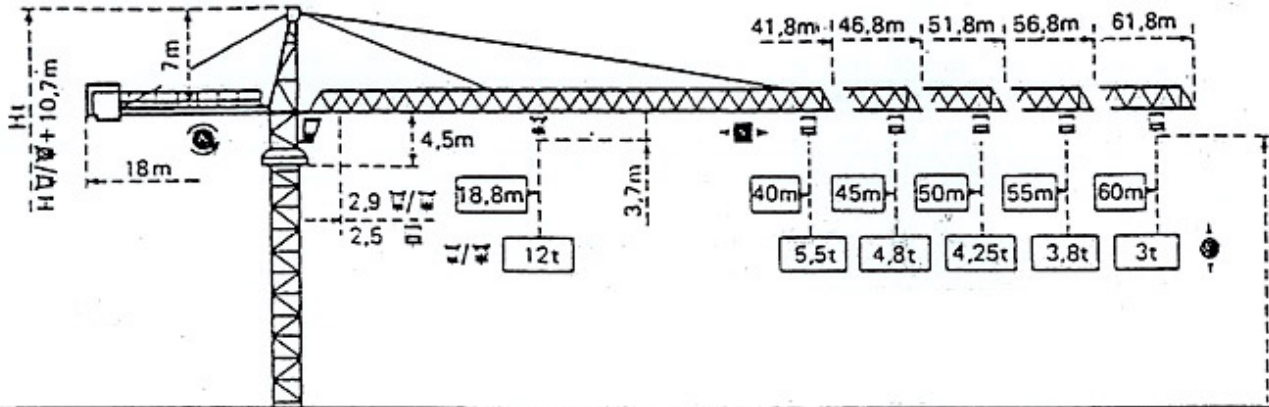
POTAIN 

DATA TECHNIQUE

POTAIN

TOPKIT H30/30C

Cotes Abmessungen Dimensions Dimensiones



Mature Mast Mast Mástil

2m x 2m

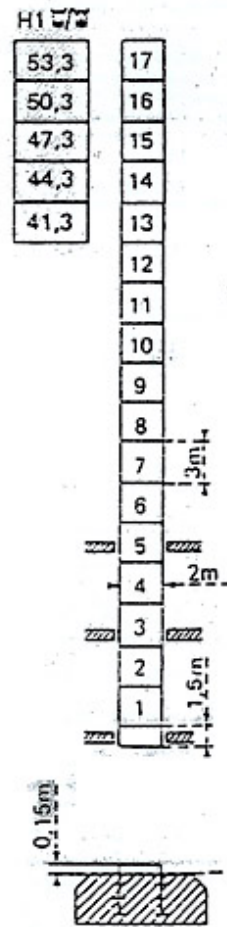
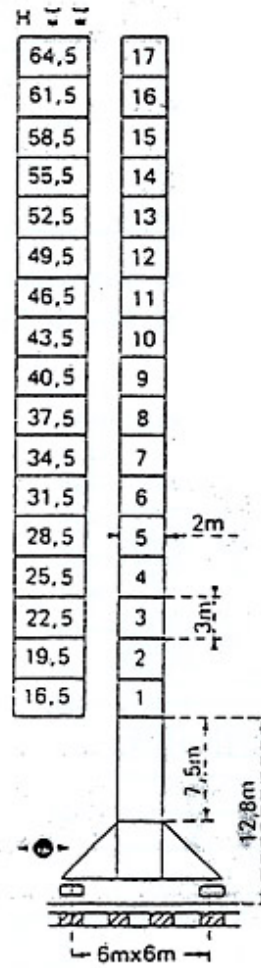
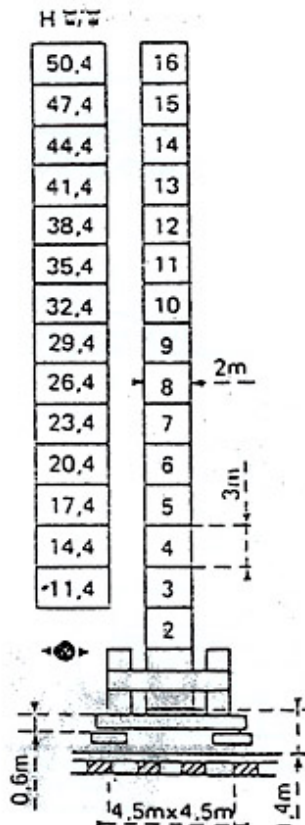
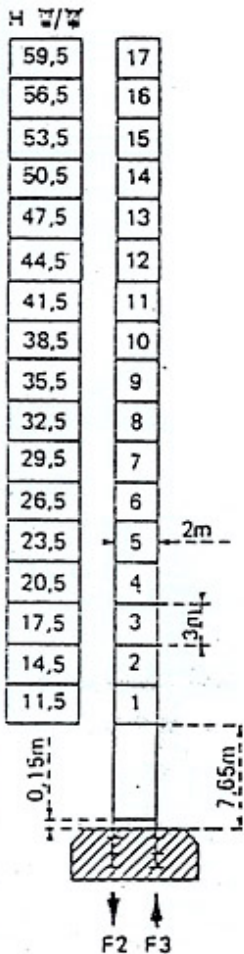
PA 682

ZD 686

VB 682

BA65A

$$H_{\square} = H_{\square/\square} + 1m$$



F2	• 129t	■ 158t
F3	• 84t	■ 119t
	• 51t	

F = Réactions Eckdrücke Reactions Reacciones

F1	• 89t	■ 105t
	• 67t	

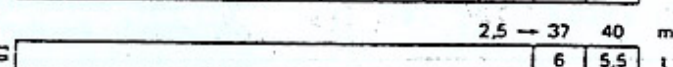
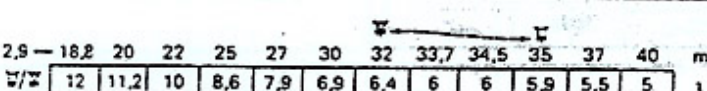
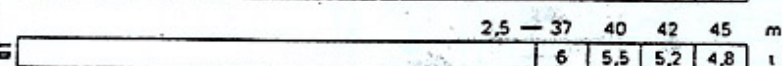
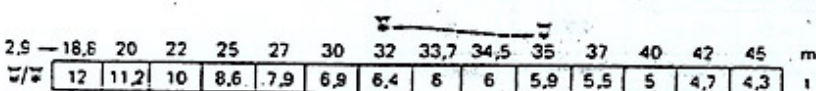
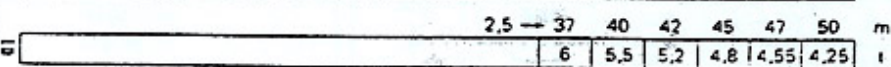
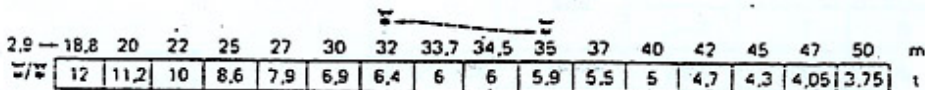
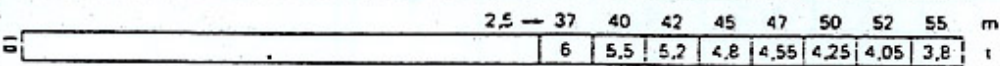
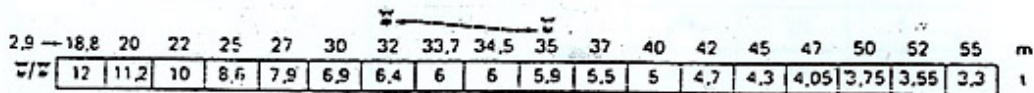
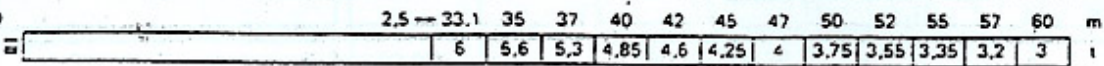
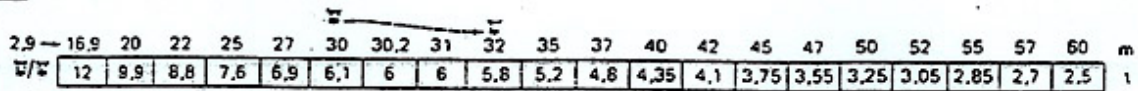
F1	• 86t	■ 106t
	• 74t	

Voir ci-contre
Siehe nebenstehend
See opposite
Ver página opuesta

Courbes de charges Lastkurven Load diagrams Curvas de cargas



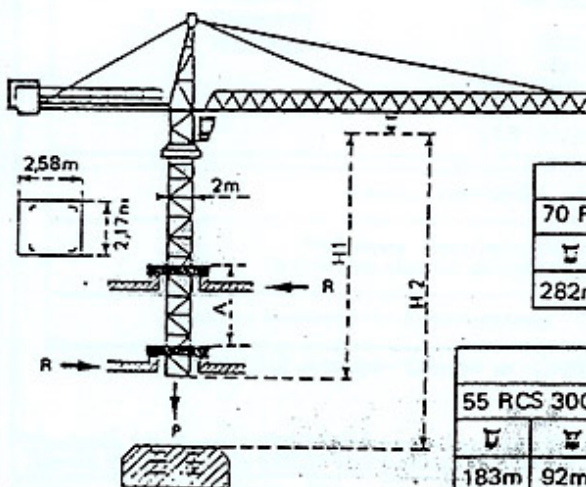
Fleche Ausleger Jib Flecha



- Chariot standard 2/4 brins (En cas d'utilisation \bar{w} deduire 0,2 t aux charges \bar{w}).
- Chariot optionnel 2 brins uniquement.
- Standardlaufkatze 2/4 Stränge. (Bei Einsatz von \bar{w} ist 0,2 t der Lasten von \bar{w} abzuziehen.)
- Laufkatze in Sonderausführung mit nur 2 Strängen.
- Standard trolley 2/4 fall (When using \bar{w} subtract 0,2 t from the loads \bar{w}).
- Optional trolley 2 fall only.
- Carro standard 2/4 ramales. (En caso de utilización \bar{w} quitar 0,2 t de las cargas \bar{w}).
- Carro opcional en 2 ramales solamente.

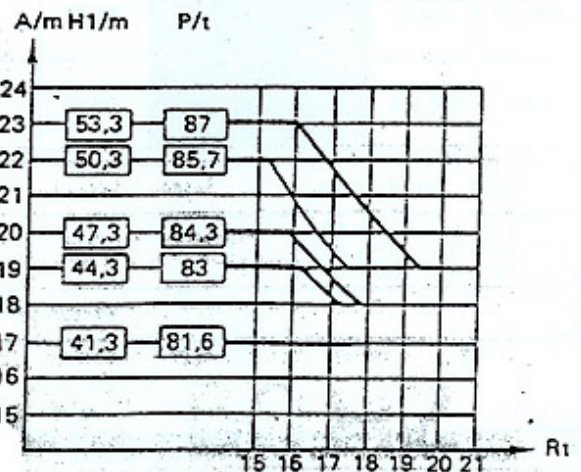
Télescopage sur dalles - Ketterkrane im Gebäude Climbing crane - Telecopage gruas trepadoras

BA65A





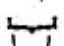





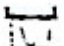




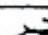




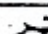
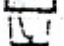

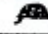
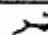







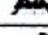

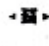

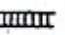


H2	
70 RCS 30C	
\bar{w}	\bar{w}
282m	141m

H2			
55 RCS 30C	33 PC 30C		
\bar{w}	\bar{w}	\bar{w}	\bar{w}
183m	92m	204m	102m



- A Distance entre cadres / Abstand zwischen den Rahmen / Distance between collars / Distancia entre marcos
- H1 Hauteur grue / Kranhöhe / Crane height / Altura grúa
- P Poids de la grue (En service) / Krangewicht (In Betrieb) / Crane weight (In service) / Peso de la grúa (En servicio)
- R Réaction horizontale / Horizontalkräfte / Horizontal reaction / Reacción horizontal

- En service / In Betrieb / In service / En servicio
- Hors service / Ausser Betrieb / Out of service / Fuera de servicio
- ⊕ A vide sans lest avec flèche et hauteur maximum. / Ohne Last und Ballast mit Maximalausleger und Maximalhöhe. / Without load and ballast with longest jib and maximum height. / Sin cargas, sin lastre con flecha y altura máximas.

				m/min	t		ch-PS hp	kW				
Levage Heben Hoisting Elevación	33 PC 30C 	  		4,25	6	408m >408m	39,6	29,8				
				23	6							
				46	3							
		  		2,12	12							
				11,5	12							
				23	6							
	55 RCS 30C 	 	 	0-40,5	6	365m >365m	66	48,6				
				0-81	3							
		 	 	0-20,2	12							
				0-40,5	6							
		70 RCS 30C 	 	 	0-48				6	565 m >565 m	84	61,2
					0-96				3			
 	 		0-24	12								
			0-48	6								
Distribution - Katzfahren Trolleying - Distribución		6 03V 4	12-48-96			7,2	5,3					
Orientation - Schwenken Slewing - Orientación		OMD 55	0-0,7 u/min U/min-rpm			2 x 9,6	2 x 7					
Translation Kranfahren Travelling Traslación	ZD 686 	RT 443 A1 2V	18-36			4 x 6	4 x 4,4					
	VB 682 	RT 443 A1 2V	18-36			4 x 6	4 x 4,4					
	R ≥13m 	TCV 649 ARC H ≤43,5m	12-60			4 x 8,2	4 x 6					
Réseau - Netzström - Mains supply - Red						456V ± 5% - 60Hz						
Puissance électrique nécessaire - Anschlusswert Necessary electric power - Potencia eléctrica necesaria						33 PC : 72 KVA 55 RCS : 96 KVA 70 RCS : 126 KVA						
Groupe électrogène - Stromaggregat - Generator set - Grupo electrogeno						.						

* Nous consulter - Auf Anfrage - Consult us - Consultarnos

Conforme à la directive CEE 84/534 sur le niveau acoustique - In compliance with the EEC 84/534 Instruction on noise level
 Gemäss EWG-Richtlinie 84/534 über Schall-Leistungspegel - Conforme con la directiva CEE 84/534 sobre el nivel acustico

NF E52081 - 82

POTAIN

18, rue de Charbonnières, B.P. 173-F 69132 ECULLY Cedex
 Tél. 72.20.20.20 - Télex 330 179 - Télex. Export 375 213 -
 Fax 72 20 20 00

POTAIN GmbH 6082 MÖRFELDEN WALLDORF
 Nordendstr. 79-87 - Postfach 420
 Tél. 06 105 704,0 - Télex 4.1857 45

TOPKIT H30/30C: 60 HZ