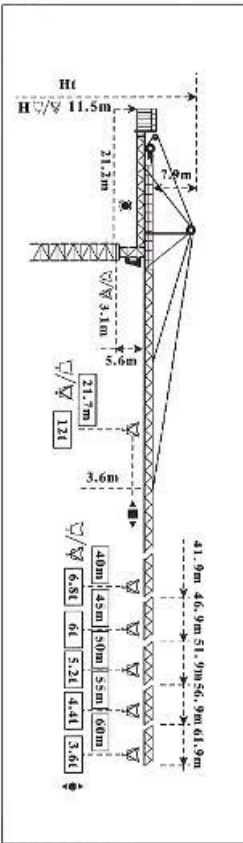


H3/36B(6036)

This type is on the basis of importing design drawings, manufacturing technology and test standard from POTAIN. The max.moment is 295tm.
It can be used as either a traveling, stationary or central ballast machine.
When it's used as a stationary machine, it can anchored to the building with the max. Height 159.7m. So it can meet the requests of skyscrapers.



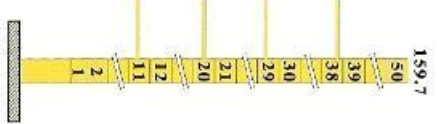
Mast: 2m X 2m

PA654

| H | V |
|------|----|
| 51.7 | 14 |
| 48.7 | 13 |
| 45.7 | 12 |
| 42.7 | 11 |
| 39.7 | 10 |
| 36.7 | 9 |
| 33.7 | 8 |
| 30.7 | 7 |
| 27.7 | 6 |
| 24.7 | 5 |
| 21.7 | 4 |
| 18.7 | 3 |
| 15.7 | 2 |
| 12.7 | 1 |

VA654

| H | V |
|------|----|
| 56.6 | 14 |
| 53.6 | 13 |
| 50.6 | 12 |
| 47.6 | 11 |
| 44.6 | 10 |
| 41.6 | 9 |
| 38.6 | 8 |
| 35.6 | 7 |
| 32.6 | 6 |
| 29.6 | 5 |
| 26.6 | 4 |
| 23.6 | 3 |
| 20.6 | 2 |
| 17.6 | 1 |



F2

| | |
|-------|------|
| 135t | 140t |
| 88t | 94t |
| 77.5t | |

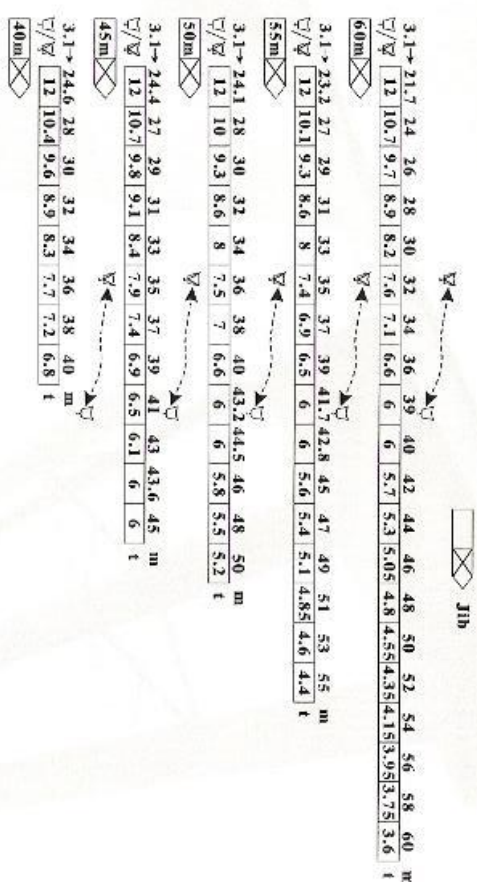
F1

| | |
|-----|-----|
| 85t | 95t |
| 93t | |

F Reactions

| | |
|--|--|
| <input checked="" type="checkbox"/> In service | <input checked="" type="checkbox"/> Without load and ballast with |
| <input checked="" type="checkbox"/> Out of service | <input checked="" type="checkbox"/> Longest jib and maximum height |

Load diagrams



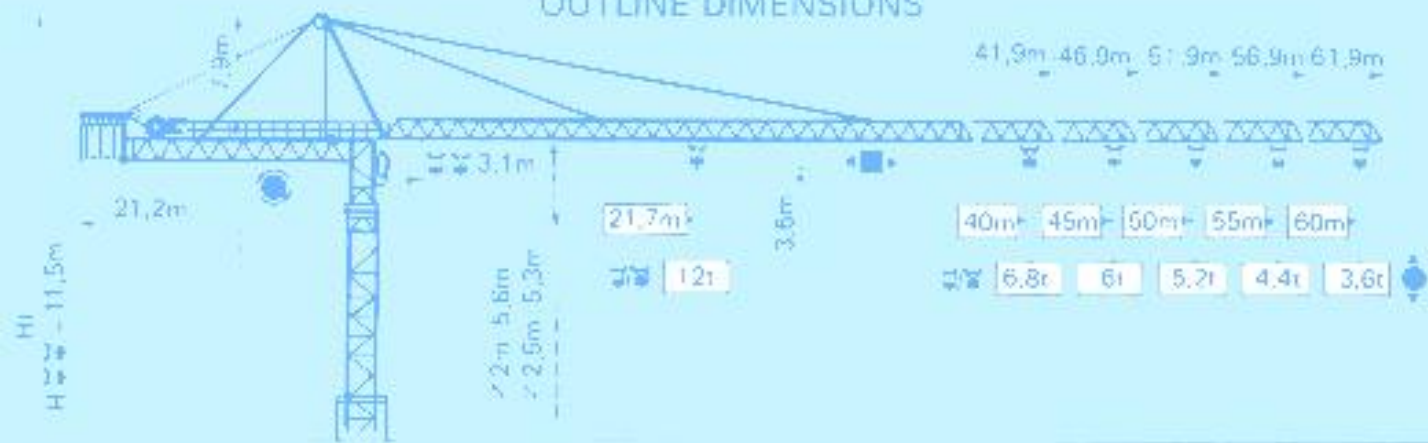
Mechanisms specification

| | | | | | | | | |
|--------------------------|----------|--|--|--|-----------------------|---|-------|-------|
| Hoisting | FORCS30 | | | | M/min | t | | KW |
| | | | | | 0→40 | 6 | 365m | 51.5 |
| Trolleying | 6DPC4 | | | | 0→7.5 | | 70m | 4.4 |
| | | | | | 0→30 | | +115m | |
| Slewing | OMD85 | | | | 0.8r.p.m | | | 2x9 |
| | | | | | | | | |
| Traveling | Standard | | | | 12.5~25 | | | 4x3.7 |
| | | | | | | | | |
| Climbering | | | | | 0.5 | | | 10 |
| | | | | | | | | |
| Mains Supply | | | | | ~380V/50HZ/~440V/60HZ | | | |
| Necessary electric power | | | | | 150KVA | | | |

Consult us



OUTLINE DIMENSIONS



Mast
 $\varnothing 2\text{m} \times 2\text{m}$

PA 654

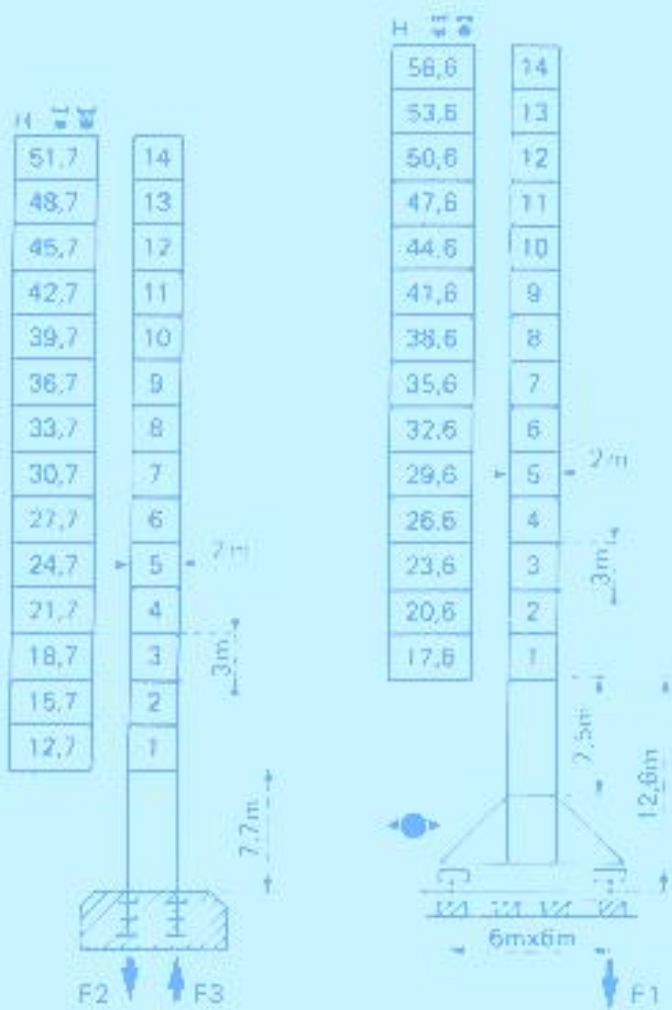
VA 654

Mast
 $\varnothing 2.5\text{m} \times 2.5\text{m}$

PA 856

XA 857

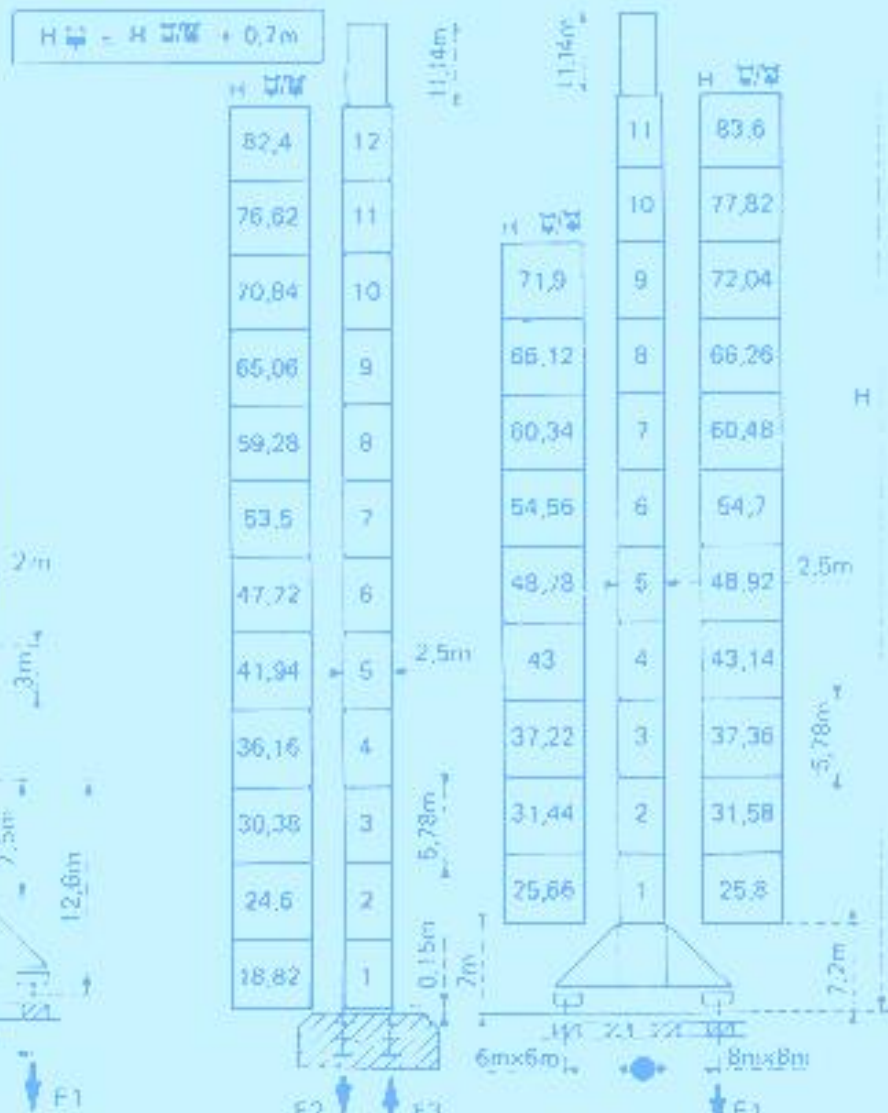
YA 858



F—固定反力或轮压 Reactions

| | | |
|----|---------|---------|
| F2 | ● 135 t | ■ 140 t |
| F3 | ● 86 t | ■ 94 t |
| | 77.5 t | |

| | | |
|----|--------|--------|
| F1 | ● 85 t | ■ 95 t |
| | 93 t | |



XA 857

| | | |
|----|---------|---------|
| F1 | ● 113 t | ■ 116 t |
| | 102.9 t | |

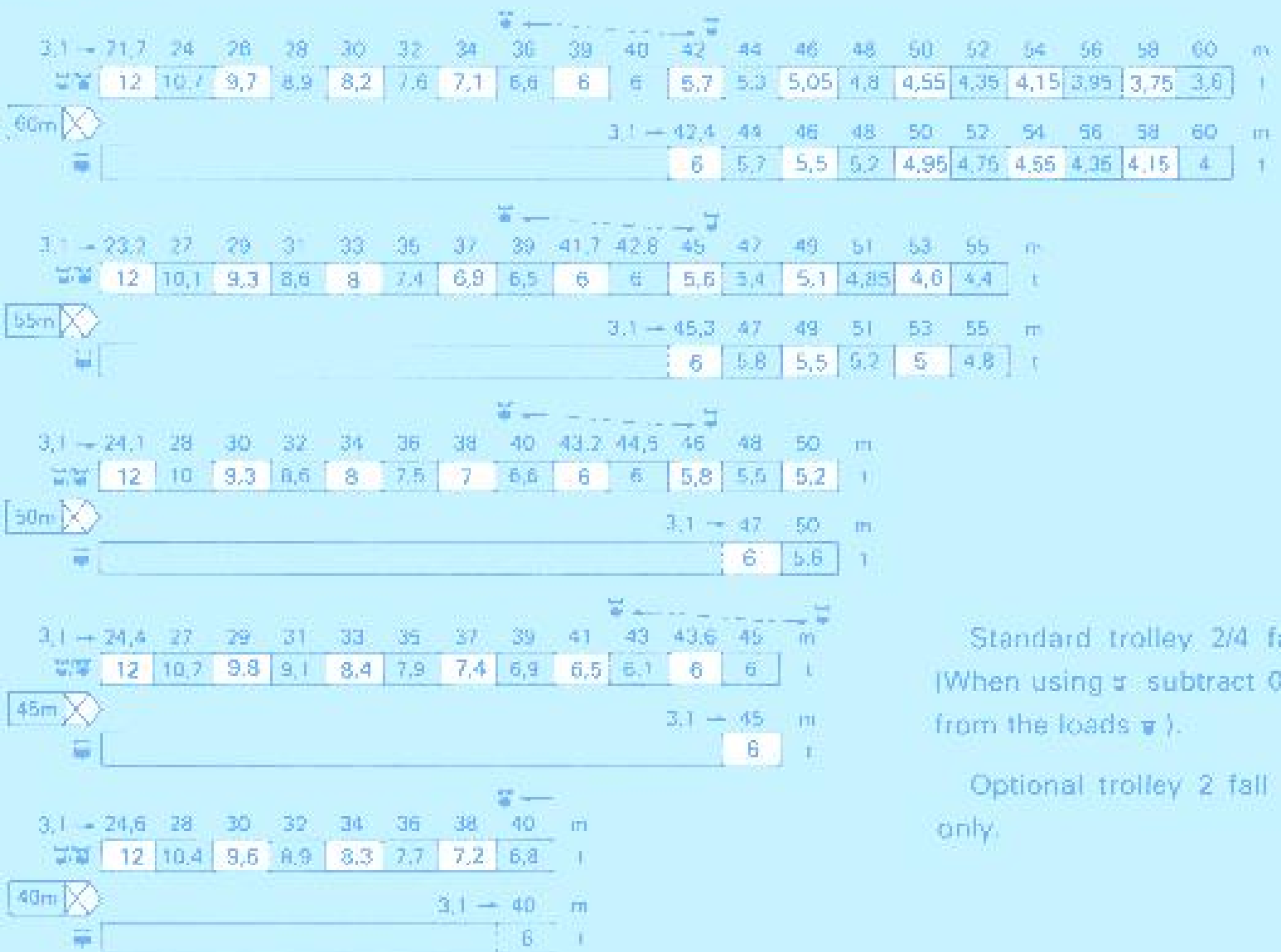
YA 858

| | | |
|----|---------|---------|
| F1 | ● 103 t | ■ 121 t |
| | 114.9 t | |

| | | |
|----|---------|---------|
| F2 | ● 165 t | ■ 213 t |
| F3 | ● 98 t | ■ 157 t |
| | 97.9 t | |

Load diagram

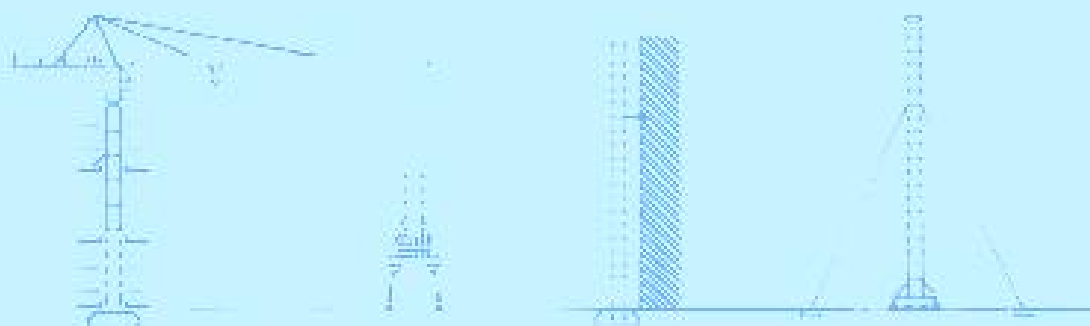
 Jib



Standard trolley 2/4 fall
(When using π subtract 0,2t
from the loads \otimes).

Optional trolley 2 fall
only.

Special mounting possibilities



Consult us