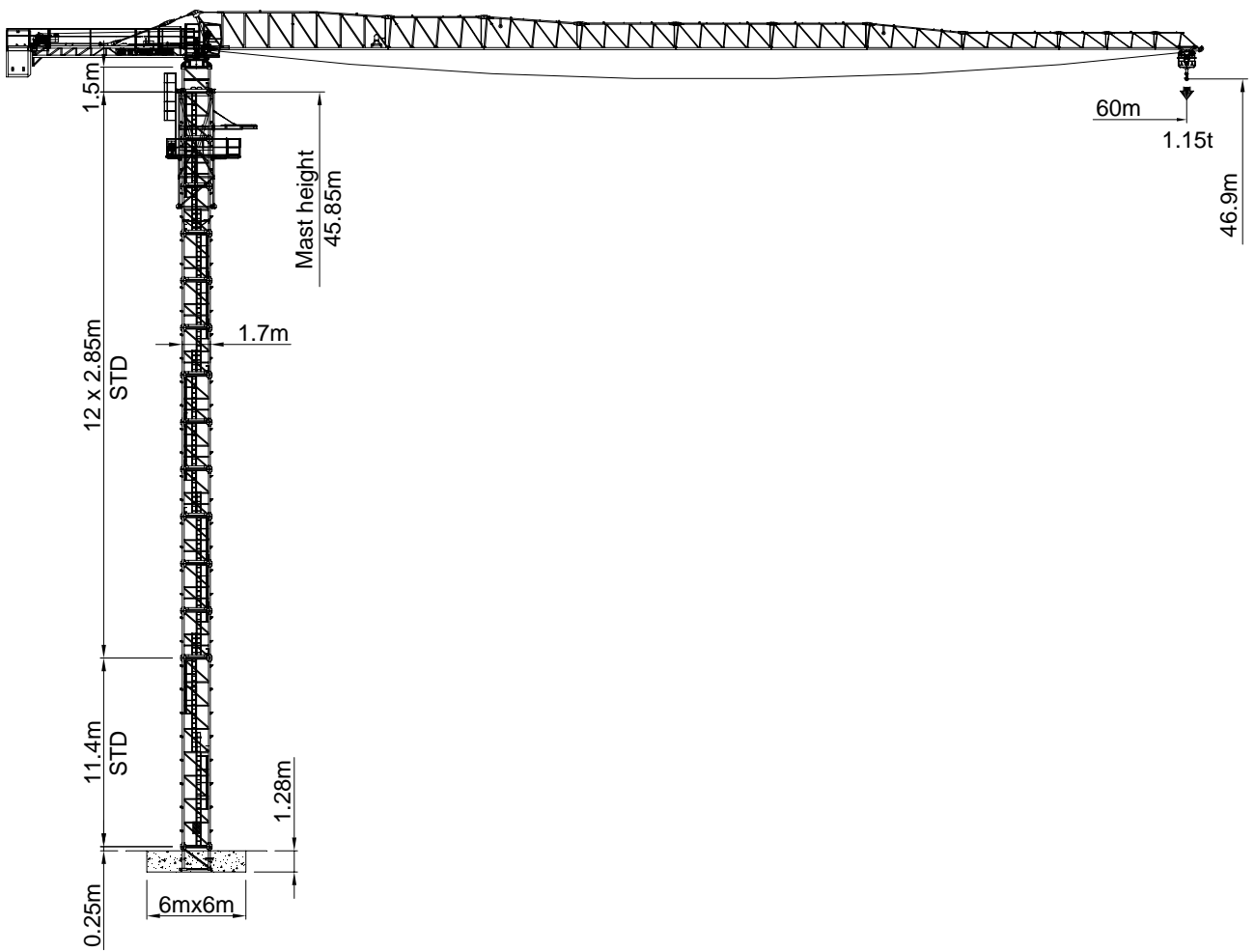


ED100F-8

Flat top crane

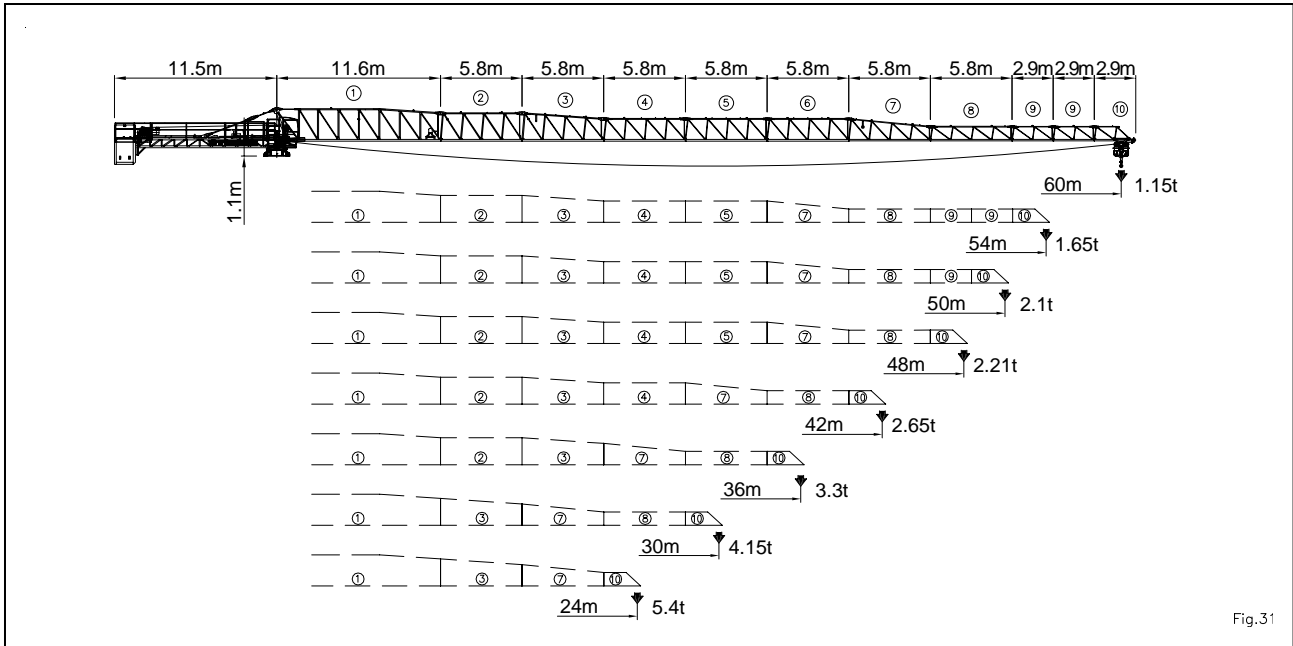


Concrete foundation
max HUH 46.9m

Fig.30

*HUH : Height under hook

Jib combination



Height

12	45.85	46.90
11	43.00	44.05
10	40.15	41.20
9	37.30	38.35
8	34.45	35.50
7	31.60	32.65
6	28.75	29.80
5	25.90	26.95
4	23.05	24.10
3	20.20	21.25
2	17.35	18.40
1	14.50	15.55
0	11.65	12.70
2.85m Mast	Mast height(m)	Hoisting height(m)


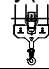
Fig.32

Concrete foundation



Counter weight

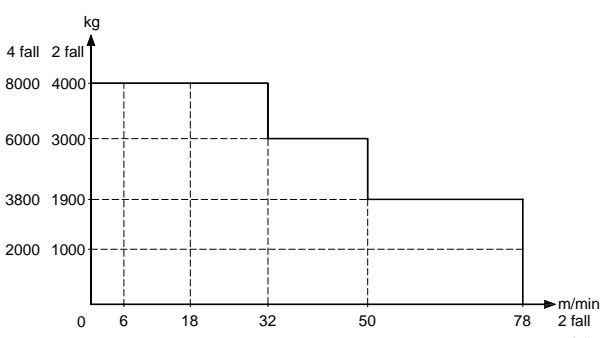
60m jib	15,260kg	Aw : 4 Bw : 4	
54m jib	15,260kg	Aw : 4 Bw : 4	
50m jib	15,260kg	Aw : 4 Bw : 4	
48m jib	13,576kg	Aw : 4 Bw : 3	
42m jib	11,445kg	Aw : 3 Bw : 3	
36m jib	9,314kg	Aw : 2 Bw : 3	
30m jib	7,183kg	Aw : 1 Bw : 3	
24m jib	6,393kg	Aw : 3 Bw : 0	


Radius and capacity

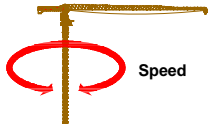
Jib length m	Max capacity (m/kg)  		Radius & Hoisting capacity											
			m / kg	12	16	20	24	30	36	42	48	50	54	60
60	1.6 – 22.0 4,000	1.6 – 12.3 8,000	4 fall	8,000	5,935	4,597	3,719	2,852	2,280	1,874	1,571	1,487	1,337	1,150
			2 fall	4,000	4,000	4,000	3,719	2,852	2,280	1,874	1,571	1,487	1,337	1,150
54	1.6 – 26.0 4,000	1.6 – 14.3 8,000	4 fall	8,000	7,027	5,462	4,435	3,421	2,753	2,278	1,924	1,825	1,650	
			2 fall	4,000	4,000	4,000	4,000	3,421	2,753	2,278	1,924	1,825	1,650	
50	1.6 – 29.3 4,000	1.6 – 15.8 8,000	4 fall	8,000	7,913	6,164	5,017	3,884	3,136	2,606	2,210	2,100		
			2 fall	4,000	4,000	4,000	4,000	3,884	3,136	2,606	2,210	2,100		
48	1.6 – 29.4 4,000	1.6 – 15.8 8,000	4 fall	8,000	7,912	6,163	5,016	3,883	3,136	2,605	2,210			
			2 fall	4,000	4,000	4,000	4,000	3,883	3,136	2,605	2,210			
42	1.6 – 30.0 4,000	1.6 – 16.1 8,000	4 fall	8,000	8,000	6,259	5,095	3,946	3,188	2,650				
			2 fall	4,000	4,000	4,000	4,000	3,946	3,188	2,650				
36	1.6 – 31.1 4,000	1.6 – 16.5 8,000	4 fall	8,000	8,000	6,464	5,265	4,081	3,300					
			2 fall	4,000	4,000	4,000	4,000	4,000	3,300					
30	1.6 – 30.0 4,000	1.6 – 16.8 8,000	4 fall	8,000	8,000	6,569	5,352	4,150						
			2 fall	4,000	4,000	4,000	4,000	4,000						
24	1.6 – 24.0 4,000	1.6 – 16.9 8,000	4 fall	8,000	8,000	6,627	5,400							
			2 fall	4,000	4,000	4,000	4,000							

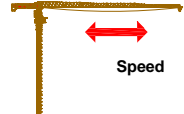
Driving performance

Hoist winch 30kW - AC- 5Step			
	2 Part Line	1Step	0 ~ 4,000kg 6m/min
		2Step	0 ~ 4,000kg 18m/min
		3Step	0 ~ 4,000kg 32m/min
		4Step	0 ~ 3,000kg 50m/min
		5Step	0 ~ 1,900kg 78m/min
	4 Part Line	1Step	0 ~ 8,000kg 3m/min
		2Step	0 ~ 8,000kg 9m/min
		3Step	0 ~ 8,000kg 16m/min
		4Step	0 ~ 6,000kg 25m/min
		5Step	0 ~ 3,800kg 39m/min



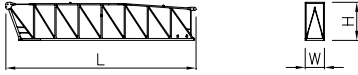











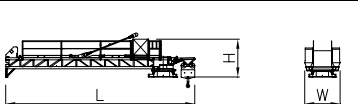
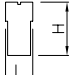

Electrical information	
Power supply 	3ph x 380V, 50/60Hz
Control circuit	24Vac , 12Vac
Power consumption	70kVA
Power cable	PNCT x 35SQ x 4Core

Slewing machinery- 2Drive units-AC-3Step	
	2x4kW – AC 0.27 / 0.5 / 0.72rpm

Trolley winch 5.5kW - AC - 3Step	
	5.5kW – AC 15 / 40 / 64 m/min

Packing list

Upper part

Description	Q'ty	Sketch	Demension(m)			Weight(kg)		
			L	W	H	Unit	Total	
Jib single Element	No. 1	1		11.960	1.200	2.380	2,143	-
	No. 2	1		6.110	1.200	2.070	773	-
	No. 3	1		6.100	1.200	2.070	741	-
	No. 4	1		6.070	1.200	1.660	574	-
	No. 5	1		6.030	1.200	1.640	501	-
	No. 6	1		6.030	1.200	1.640	501	-
	No. 7	1		6.015	1.200	1.620	437	-
	No. 8	1		5.985	1.200	1.070	378	-
	No. 9	2		2.985	1.200	1.070	184	368
	No. 10	1		2.860	1.200	1.070	188	-
Operating cabin & Platform ass'y	1		2.553	1.752	2.170	595	-	
End counter jib	1		2.585	2.190	1.350	550	-	
Counter jib ass'y, Tie rod, Hoist winch, Handrail etc.	1		11.900	2.230	2.550	6,885	-	
Counter weight block	4		Aw	1.430	265	2.800	2,131	8,524
	4		Bw	1.430	210	2.800	1,684	6,736

Packing list (...Continued)

Climbing equipment

Description	Q'ty	Sketch	Demension(m)			Weight(kg)	
			L	W	H	Unit	Total
Climbing cage ass'y	1		7.160	2.350	2.160	6,205	-

Mast

Connection frame	1		1.500	1.700	1.700	655	-
2.85m Mast section	-		2.850	1.896	1.896	898	-
11.4m Mast section	-		11.400	1.896	1.896	3,592	-
Foundation anchor	1		1.960	2.400	2.400	608	-

Tie schedule

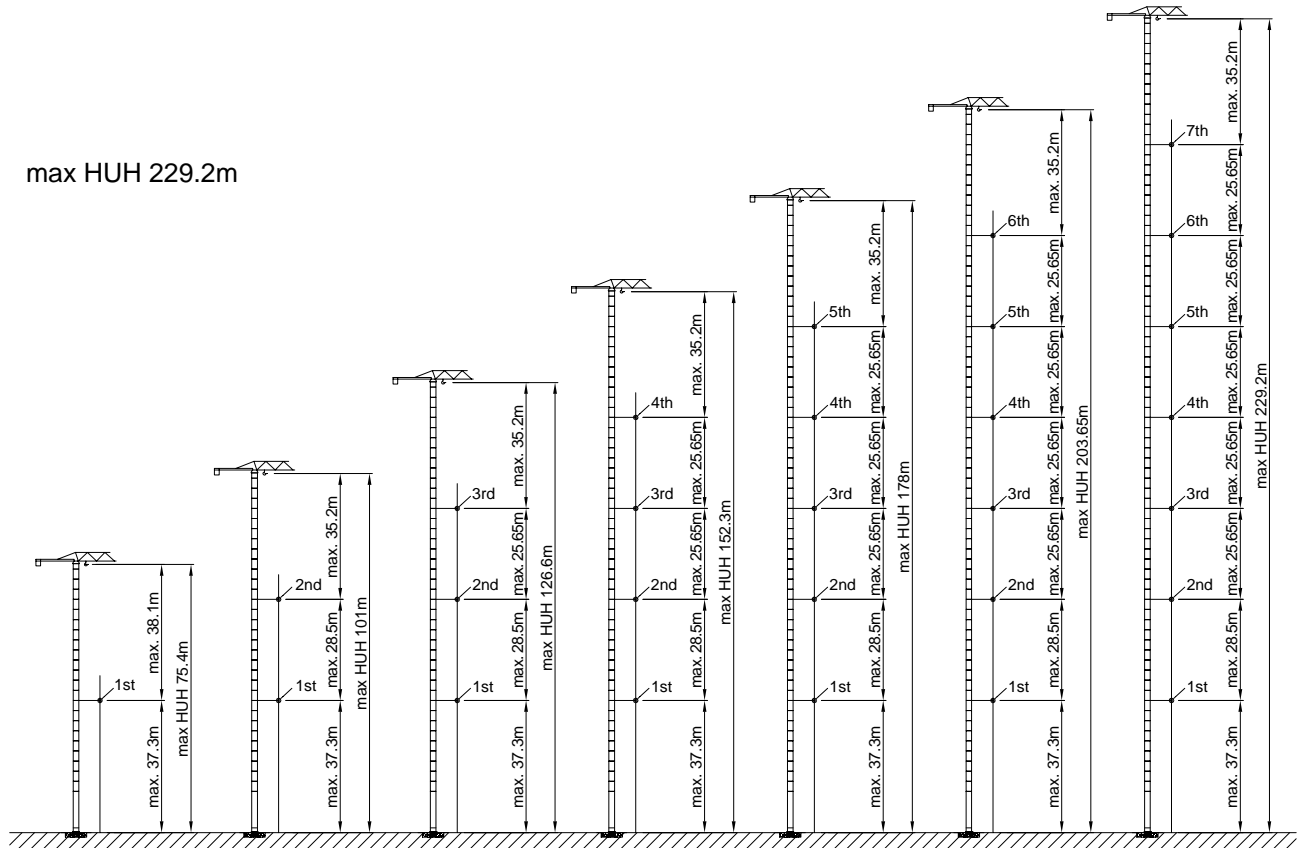


Fig.33