

Diagramma di portata
Load Diagram



Courbes de charges
Lastkurven



Curvas de cargas



		CTL 400/A-24															
		20	22	24	26	28	30	32	34	36	38	40	45	50	55	60	
12 t	- 25.7 m	12	12	12	11.84	10.99	10.23	9.56	8.98	8.45	7.99	7.57	6.68	5.97	5.38	4.9	
12 t	- 32.9 m	12	12	12	12	12	12	12	11.59*	10.9*	10.27*	9.71*	8.53*	7.6*			
18 t	- 23.1 m	18	18	17.26	15.89	14.72	13.7	12.81	12.02	11.33	10.7	10.14	8.95	8			
12 t	- 36.3 m	12	12	12	12	12	12	12	12	12	11.43*	10.85*					
18 t	- 25.3 m	18	18	18	17.53	16.24	15.12	14.14	13.28	12.51	11.82	11.24					
24 t	- 18.9 m	22.66	20.52	18.74	17.23	15.94	14.73	13.75	12.89	12.12	11.43	10.85					
12 t	- 30 m	12	12	12	12	12	12										
18 t	- 26.1 m	18	18	18	18	16.75	15.64										
24 t	- 19.4 m	23.29	21.09	19.25	17.7	16.36	15.25										

* = + 400 kg [0.5 - 30 m - 40 m - 50 m]

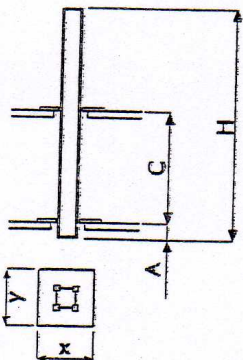
Altre installazioni
Other configurations



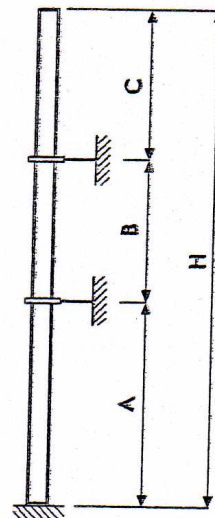
Autres implantations
Aufstellmöglichkeiten



Otras implantaciones



Gru climbing
Bottom climbing crane
Telescopage sur dalles
Kletterkran im Gebäude
Telescopage grúa trepadora



Gru ancorata
Crane tied to the structure
Grue ancrée
Geankerter Kran
Grúa anclada



HD 23 20.0														
[m]														
	L ₁	L ₂	L ₂₋₃	L ₃	L ₄	L ₅	L ₆	L ₇	L ₈	L ₉	L ₁₀	L ₁₁	L ₁₂	
C _{min}	10	12		14		16		18						
H _{max}	36	48	36	30	54	48	42	36	54	48	42	60	54	48
A _{min}	2													
x	2.95													
y	2.42													

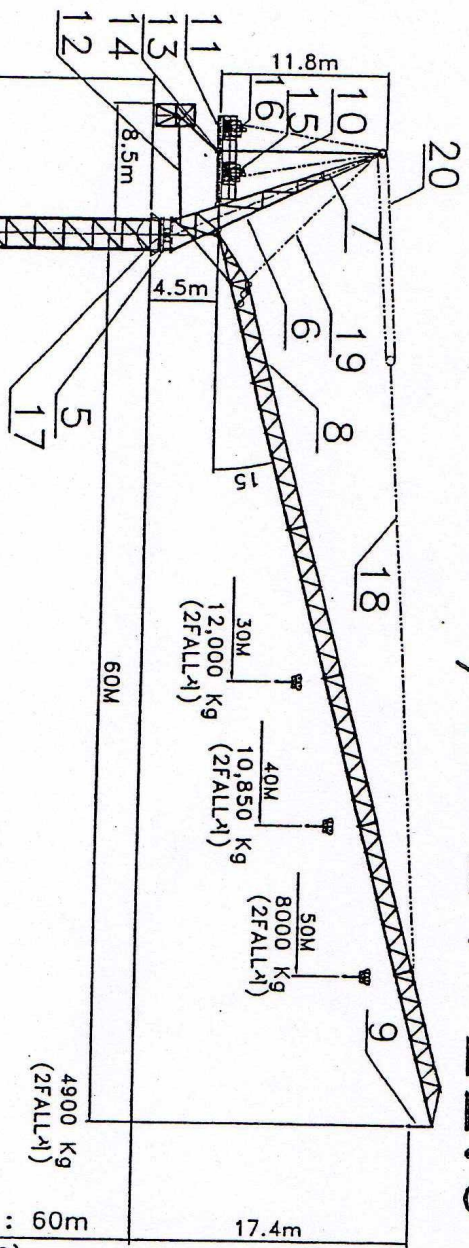
HD 23 20.0							HD 23 20.0			
[m]										
	L ₁	L ₂	L ₃	L ₄	L ₅	L ₆	L ₇	L ₈	L ₉	L ₁₀
A _{min/max}	30/54	30/48	30/42	30/66	30/66	30/60	30/54			
B _{min/max}	24/36	24/36	24/30	24/36	24/36	24/36	24/30			
C _{max}	34	30	26	34	30	30	26			
H _{max}	⊙									

HD 23 20.0															
[m]															
	L ₁	L ₂	L ₂₋₃	L ₃	L ₄	L ₅	L ₆	L ₇	L ₈	L ₉	L ₁₀	L ₁₁	L ₁₂	L ₁₃	L ₁₄
C _{min}	10	12		14		16		18		20		22		24	
H _{max}	36	48	36	30	54	48	42	36	54	48	42	60	54	48	60
A _{min}	2														
x	3														
y	2.47														

CTL 400/A-24-22.6 풍조립도

품명 LIST

NO.	품명	수량	중량(kg)	비고
1	ANCHOR (HD23 22)	1SET	452	
2	MAST (HD23x22.6 @4823x10)	1SET	48,230	
3	TELESCOPIC CAGE	1EA	14,500	
4	HYD CYLINDER SET	1EA	14,500	
5	TURN TABLE	1SET	9,500	
6	CAT HEAD LOWER	1SET	6,000	
7	CAT HEAD UPPER	1SET	2,250	
8	JIB (60M)	1SET	10,500	
9	HOOK (2FALL)	1SET	430	
	(3FALL)		650	
	(4FALL)		860	
10	C/JIB TIE BAR	1SET	165	
11	C/JIB	1SET	1,700	
12	LEVERAGES	1SET	1,693	
13	MOBILE BALLAST CAGE	1SET	190	
14	BALLAST BLOCK	1SET	595	
15	HOIST UNIT AC:126 Kw D.C: 83.5 Kw	1SET	6,670	
16	LUFFING UNIT AC:103Kw D.C:63.7Kw	1SET	4,410	
17	SLEWING UNIT 2 x 14.6 Kw	2SET	7,180	
18	JIB TIE BAR	1SET	4,790	
19	HOIST ROPE Ø20	1SET		
20	LUFFING ROPE Ø18	1SET		
21	FOUNDATION PLAN (8.5*8.5*1.7m)	1SET	294,780	



max. MAST HEIGHT : 60m
(FREE STANDING)

* 기본 사양 *

구분	전동기(KW)	FALL	권선중량(Ton)	속도(m/min)	비고
권선장치	126 KW	2	0.6~12	0 ~ 116.0	D.C 83.5 Kw ratio : 1/35.8
신뢰장치	14.6KWx2	4	1.9~18	0 ~ 77.0	ratio : 1/35.8
			1.2~24	0 ~ 58.0	ratio : 1/170.5x12/145
LUFFING	103KW				2.1min (15~84) D.C 63.7 Kw ratio : 1/37.6
WIRE ROPE 사양	258.2xW				
MAIN CABLE		HOIST (Ø20)			
MAIN 리프팅 용량		LUFFING (Ø18)			
		1ø x 250 mm ² x 3EA (H07 RNF)			
		450A			

형식번호 :
TOWER CRANE CTL400/A-24-22.6 (표정사)



	OUT OF SERVICE max. JIB POSITION
L4 = JIB 60m	70° ~22m
L3 = JIB 50m	74° ~15m
L2 = JIB 40m	70° ~15m
L1 = JIB 30m	63° ~15m

075-BC7-004-

NO	DESCRIPTION	SIZE	MATL	QTY	REMARKS
TITLE: CTL400/A-24-22.6 풍조립도					
DWG DSD CHD CHD AFD SCALE PROJECTION					
REV	DATE	CAUSED	DATE	DWG NO. CTL400/A-24	

**Meccanismi
Mechanisms**



**Mécanismes
Antriebe**



Mecanismos



258 * KVA	400 - 460 V / 50 - 60 Hz	2000/14/CE
-----------	--------------------------	------------

* Gru senza traslazione / Crane without travelling equipment / Grue sans translation / Krane ohne Schienenfahren / Grúa sin traslación

		m/min	l	kW	
 110 AWL 120 LLC D1 110 AWL 120 LLC D2		0 ⇄ 40	12	110	630 m (LLC D1) 1140 m (LLC D2)
		0 ⇄ 55	8.6		
		0 ⇄ 75	6		
		0 ⇄ 102	4.2		
		0 ⇄ 116	0.6		
		0 ⇄ 27	18		
		0 ⇄ 37	12.9		
		0 ⇄ 50	9		
		0 ⇄ 68	6.3		
		0 ⇄ 77	0.9		
		0 ⇄ 20	24		
		0 ⇄ 27.5	17.2		
		0 ⇄ 37.5	12		
		0 ⇄ 51	8.4		
		0 ⇄ 58	1.2		

	LWL 9000/D2	2.1 min	90 kW
	SCC 2 2 T32	0 ⇄ 0.65 r.p.m.	2 × 14 kW
	TSR 2 RG 4 M 8	12 ⇄ 24 m/min	4 × 80 Nm

	Sollevamento		Hoisting		Heben		Elevación	
	Brandeggio		Luffing		Ausleger-Einziehen		Elevación de pluma	
	Rotazione		Slewing		Schwenken		Orientación	
	Traslazione		Travelling		Schienerfahren		Traslación	
	Direttiva sul livello acustico		Directive on noise level		Richtlinie für den Schall-Leistungspegel		Directiva sobre el nivel acustico	
	Consultarci		Consult us		Auf Anfrage		Consultarnos	
	Potenza totale richiesta		Power requirements		Geforderte Stromstärke		Potencia necesaria	
	Alimentazione		Power supply		Stromversorgung		Alimentación	

Grú Comedil s.r.l.

A Terex Company



Divisione Automontanti

Via S. Egidio 42/A, 33074 Fontanafredda (PN) - Italy
Tel. (+39) 0434 567 311 - Telefax (+39) 0434 998331

Via Alessandrina, 25 - 20095 Cusano Milanino (MI) - Italy
Tel. (+39) 02 613 16011 - Telefax (+39) 02 613 16034

Internet e-mail: info@comedil.com
Internet home page: www.comedil.com

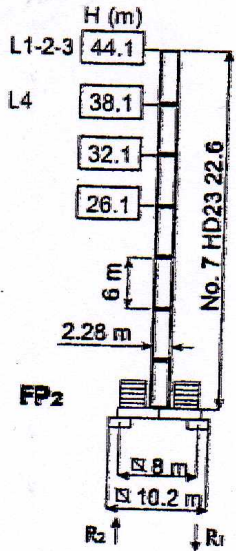
Internet e-mail: info.CBR@comedil.com

Torre **I**
Tower **GB**

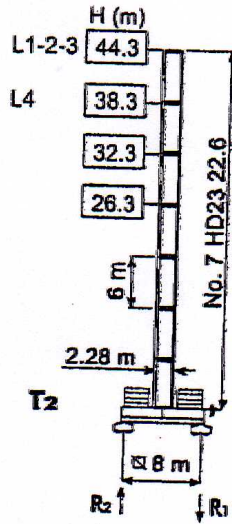
Tour **F**
Turm **D**

Torre **E**

HD23

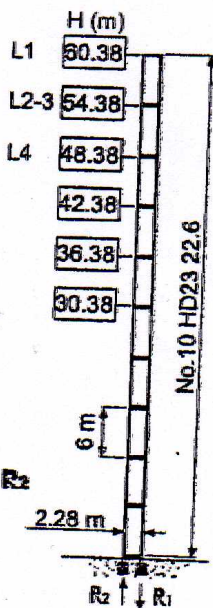


R1	1100 kN ●	1180 kN ◊
R2		
	94 t	

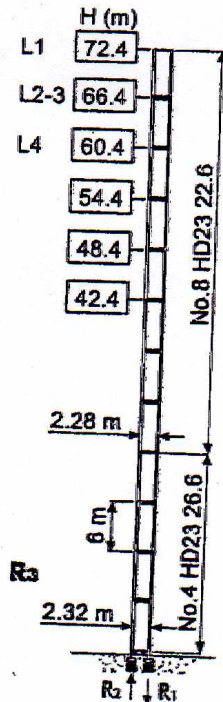


R1	1140 kN ●	1190 kN ◊
R2		
	108 t	

- H Altezza torre **I**
- In servizio
- ◊ Fuori servizio
- A vuoto, senza zavorra, braccio max., altezza max.
- H Tower height **GB**
- In service
- ◊ Out of service
- Without load, without ballast, max. jib and max. height
- H Hauteur mât **F**
- En service
- ◊ Hors service
- A vide, sans lest, avec flèche et hauteur maximum
- H Turmhöhe **D**
- In Betrieb
- ◊ Außer Betrieb
- Ohne Last und Ballast, mit Maximalausleger und Maximalhöhe
- H Altura torre **E**
- En servicio
- ◊ Fuera de servicio
- Sin carga, sin lastre, con pluma y altura máxima



R1	2330 kN ●	3730 kN ◊
R2	1670 kN ●	3130 kN ◊
	68 t	



R1	2700 kN ●	5680 kN ◊
R2	1850 kN ●	4970 kN ◊
	112 t	

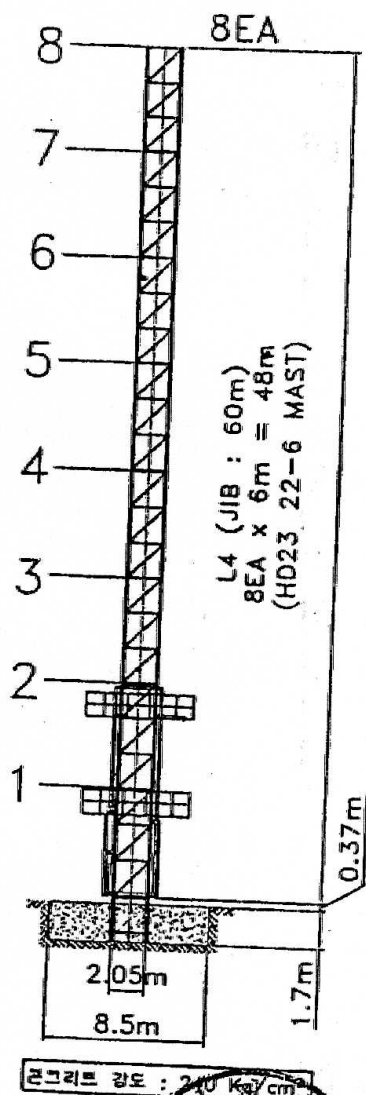
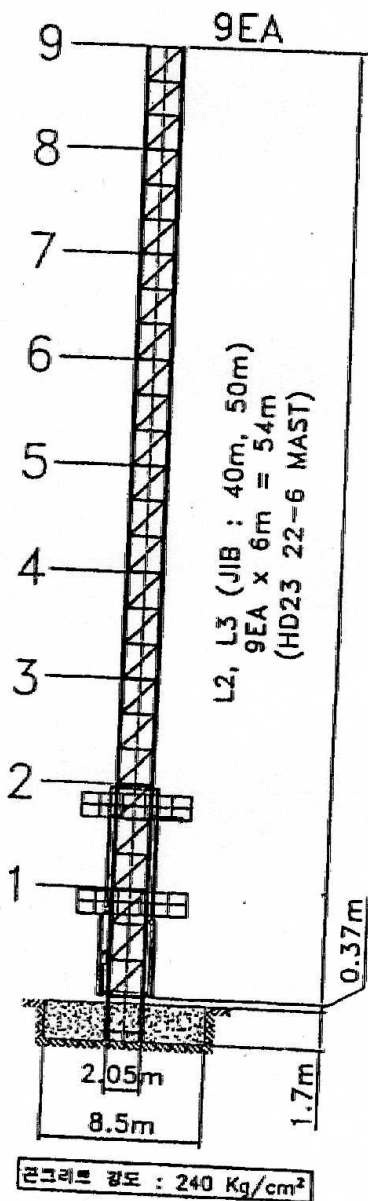
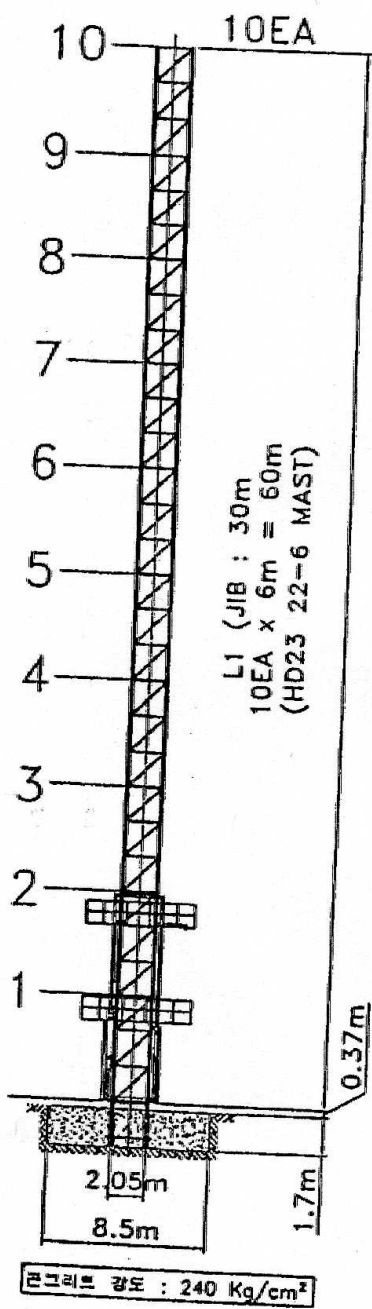
**** CTL400/A-24-22.6 MAST 설치도 ****

JIB 30m

JIB 40m, 50m

JIB 60m

MAST TYPE : HD23 22.6

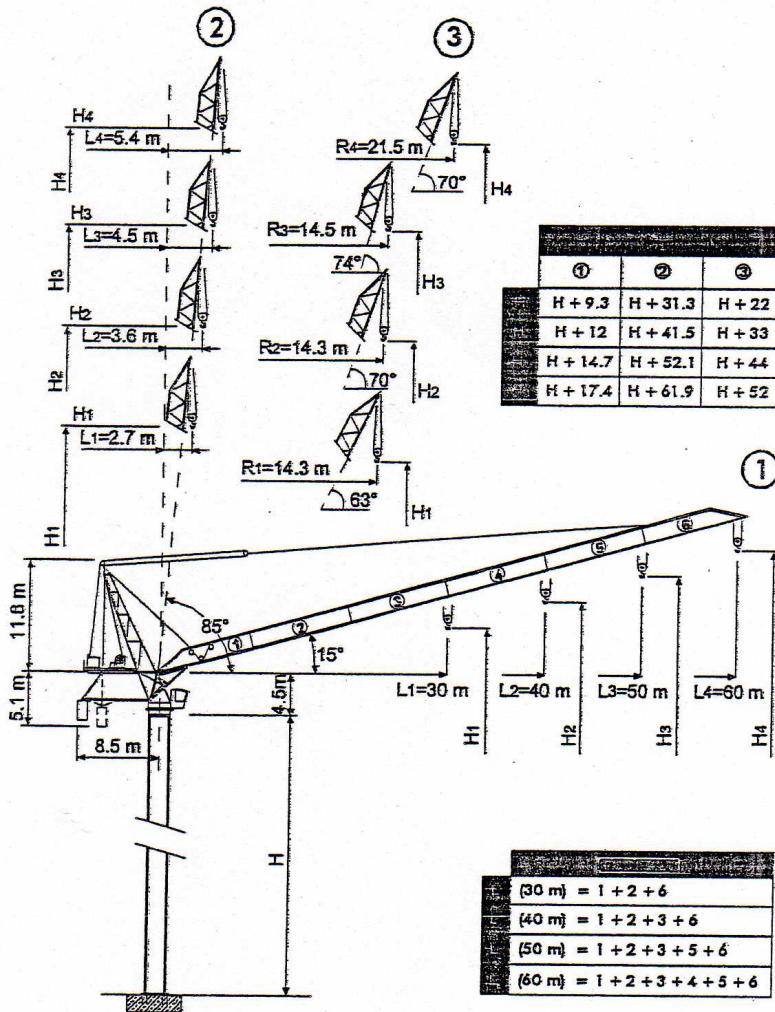


075-BC7-0047



TEREX | COMEDIL

- Gru a torre a braccio impennabile
- Luffing Jib Tower Crane • Grue à tour à flèche relevable
- Turmdrehkran mit Steilstellung-Ausleger
- Grúa torre de pluma abatible



- H Altezza torre
- R Raggio min. braccio in fuori servizio
- ① Sbraccio massimo
- ② Sbraccio minimo in servizio
- ③ Sbraccio minimo in fuori servizio

- H Tower height
- R Min. jib parking radius (out-of-service)
- ① Maximum jib
- ② Minimum jib (in service)
- ③ Minimum jib (out of service)

- H Hauteur mât
- R Rayon flèche min. hors service
- ① Portée maxi.
- ② Portée min. en service
- ③ Portée min. hors service

- H Turmhöhe
- R Mindest. Auslegerradius außer Betrieb
- ① Max. Ausleger
- ② Mindest. Ausleger in Betrieb
- ③ Mindest. Ausleger außer Betrieb

- H Altura torre
- R Radio pluma mínimo fuera de servicio
- ① Pluma máxima
- ② Pluma mínima en servicio
- ③ Pluma mínima fuera de servicio

CE FEM 1.001 A3

THE ULTIMATE CRANE™

CTL 400/A-24 HD23

Dati illustrativi non impegnativi
Con riserva di modifiche senza preavviso

Specifications and data not binding
Subject to modification without notice

Données techniques seulement indicatives
Modifications réservées sans préavis

Angaben und Beschreibung unverbindlich
Änderungen vorbehalten ohne weitere Mitteilung

Dibujos y datos sin compromiso
Modificaciones reservadas sin preaviso

TEREX RELEASE