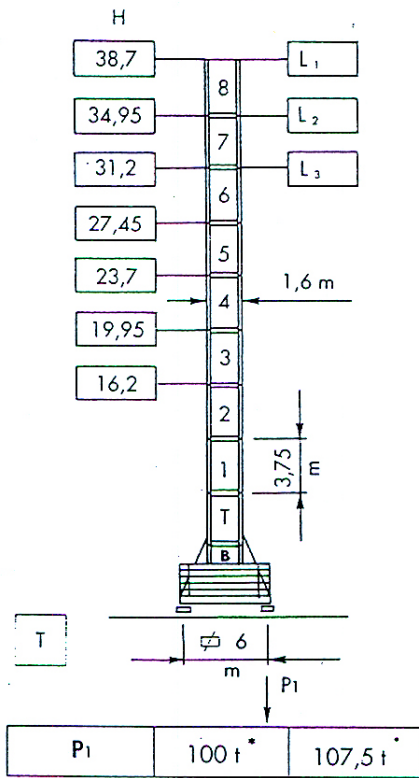


CTL 200K 25-120

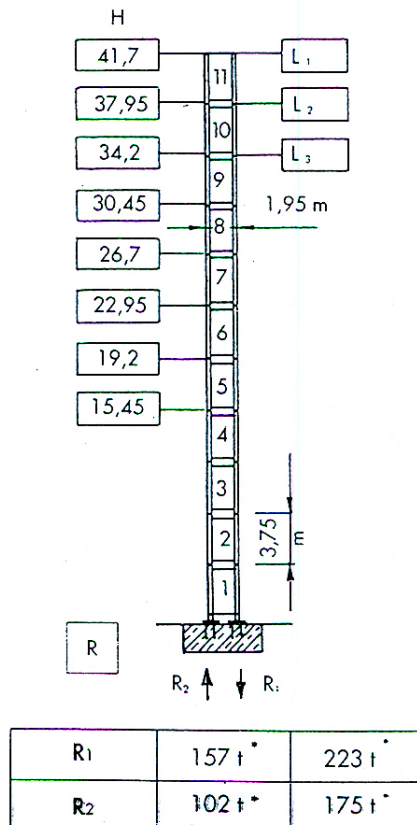
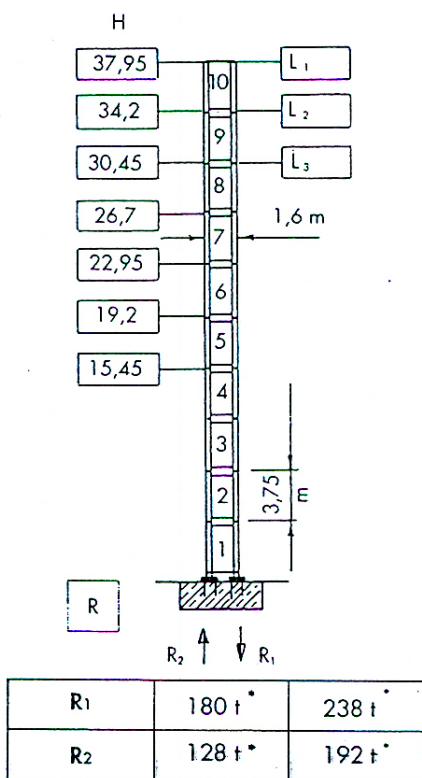
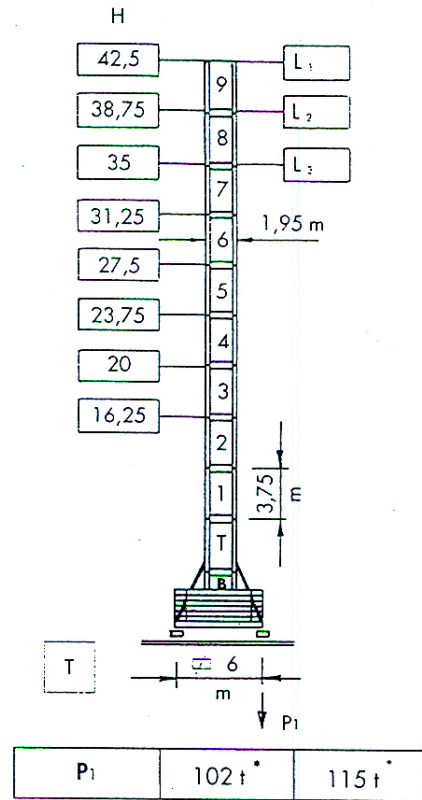


COMEDIL

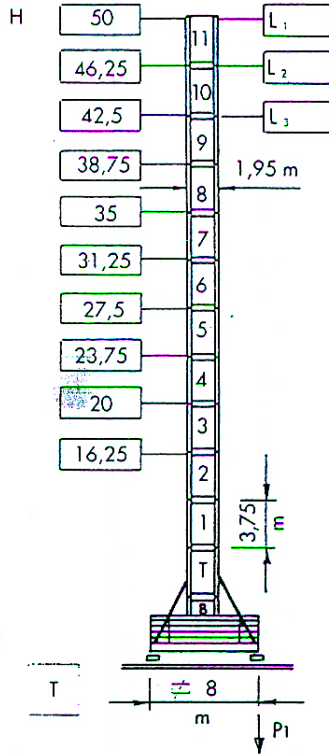
H16



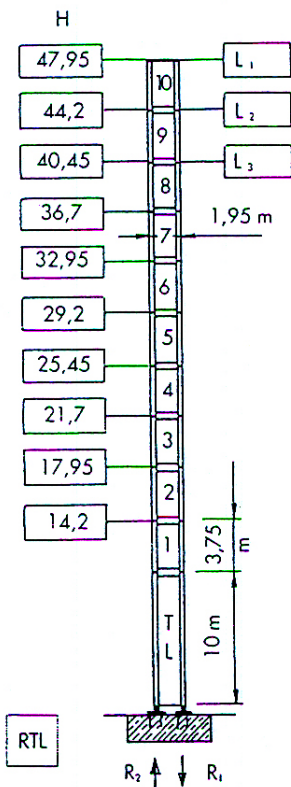
H20



H20

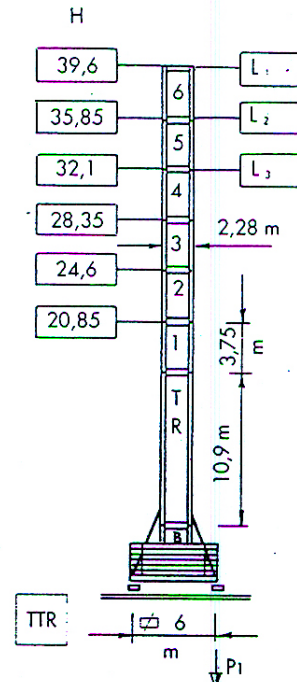


P ₁	90 t*	112 t*
----------------	-------	--------

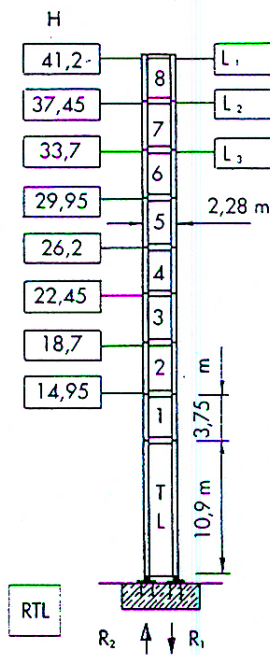


R ₁	166 t*	270 t*
R ₂	110 t*	220 t*

S23



P ₁	99,6 t*	106 t*
----------------	---------	--------







R ₁	129,2 t*	181 t*
R ₂	79,7 t*	138 t*




Necessary power supply Puissance totale necessaire
* kVA 130
* kVA 180

Winches Trevils
AWL-R 6000 + AWL-R 6006
AWL-R 6000 + AWL-R 9006

Three-phase current Courant triphase
400 / 440 V - 50/60 Hz

* Crane without travelling system - Grue sans translation

Hoist winches - Levage		m/min	t	HP	kW	
AWL-R 6006		0 → 37	6	58	43	580 m max > 580 m consult us consultez-nous
		0 → 47	4,6			
		0 → 61	3,4			
		0 → 80	2,5			
		0 → 90	1			
		0 → 18,5	12			
		0 → 23,5	9,2			
		0 → 30,5	6,8			
		0 → 40	5			
		0 → 45	2			
AWL-R 9006		0 → 55	6	87	64	580 m max > 580 m consult us consultez-nous
		0 → 73	4,4			
		0 → 96	3,2			
		0 → 130	2,3			
		0 → 140	1,2			
		0 → 27,5	12			
		0 → 36,5	8,8			
		0 → 48	6,4			
		0 → 65	4,6			
		0 → 70	2,4			

Luffing - Relevage		AWL-R 6000	2,5 min	64 HP	47 kW
Slewing - Orientation		DCU	0 - 0,8 r.p.m.	2 x 11 HP	2 x 8 kW
Travelling - Translation		TR	0 - 24 m / min	4 x 4 HP	4 x 3 kW



Gru Comedil srl

Via S. Egidio 42/A - 33074 Fontanafredda (Pn) - Italy
Tel. 0434/997580 - Telefax 0434/998631 - Telex 450256 Grucom I

Casagrande Group

In accordance with C.E.E. standards 87/405 for the acoustic level.
Conforme aux normes C.E.E. standards 87/405 sur le norme acoustique.

AGENTE/DEALER