

产品介绍 Products Introduction

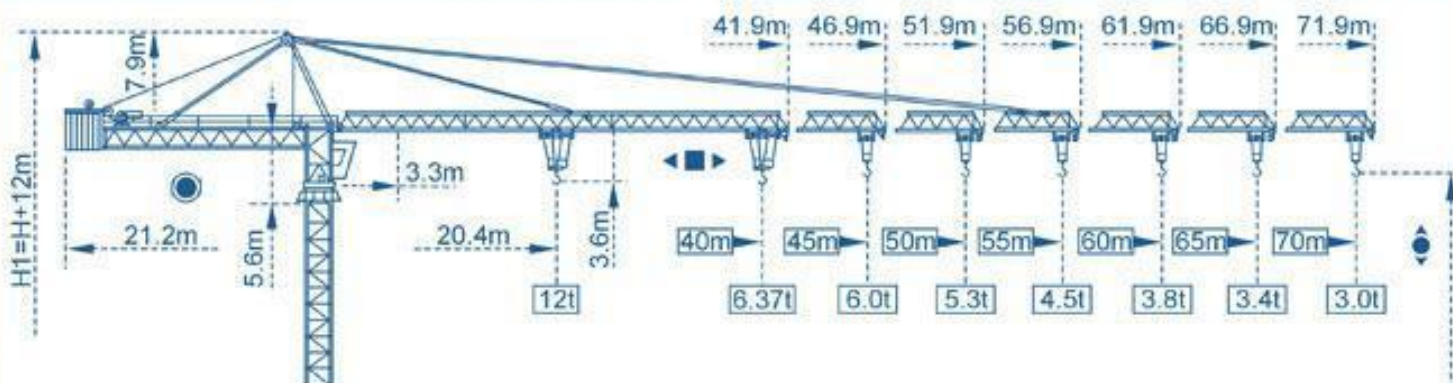
SCM-C7030塔式起重机，是我公司自行设计上回转，自升塔式起重机，最大起重量12t。各种机构采用本公司先进技术，性能优越，构造合理，就位准确。

该机具有轨道行走式，固定附着式，内爬式三种使用类型。

SCM-C7030 tower crane is a kind of self-telescoping crane slewing from the top which is designed and manufactured by SCM. The maximum hoisting capacity is 12t, All the mechanisms of the C7030 adopted advanced technology with reasonable structures, superior performance and exact positioning.

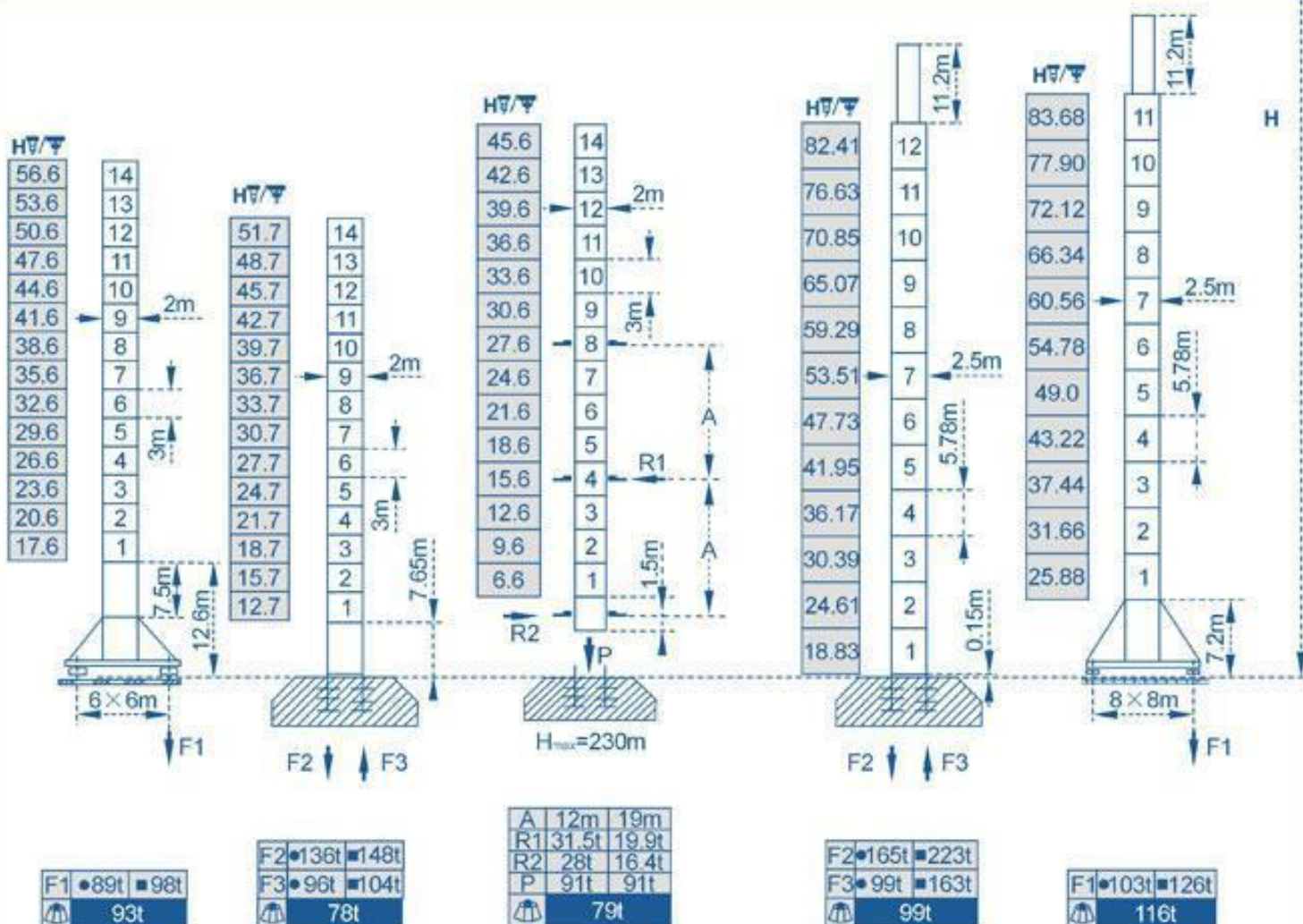
SCM-C7030 can be rail-travelling, stationary (or anchorage type) and inner-climbing type.

外形尺寸 Outline Dimensions



塔身截面 Mast $\varnothing 2 \times 2\text{m}$

$\varnothing 2.5 \times 2.5\text{m}$



● 工作状态 in service ■ 非工作状态 out of service
 自重 Without load and ballast with longest jib and maximum height

F=固定反力或轮压 Reactions