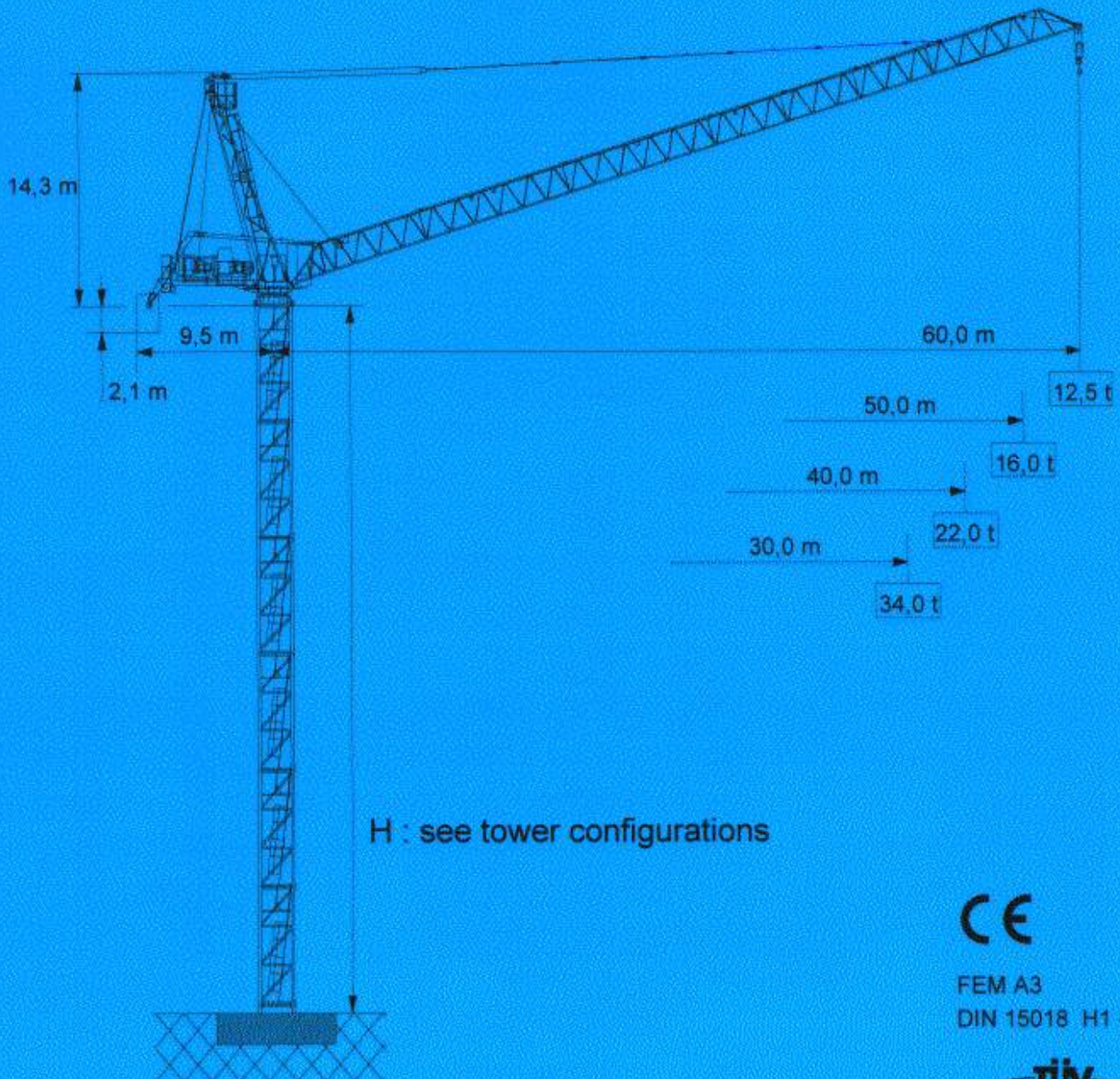


LUFFING CRANE BN 805 - 50

2/4- fall



CE

FEM A3
DIN 15018 H1 - B3

tüv
CERT

DIN EN ISO 9001








Edition 09.96 Subject to modification

805_504K_PM4




BN 805-50

2/4-fall

Radius and capacity

Jib		max. Capacity		m x t										
m	Rope fall	t	m	22	24	26	28	30	35	40	45	50	55	60
60,0		25,0	31,4	25,0	25,0	25,0	25,0	25,0	22,3	19,4	17,1	15,2	13,7	12,5
50,0		40,0	21,7	39,4	36,0	33,0	30,5	28,3	23,9	20,6	18,1	16,0		
		25,0	33,6	25,0	25,0	25,0	25,0	25,0	23,9	20,6	18,1	16,0		
40,0		50,0	18,6	42,0	38,3	35,1	32,5	30,1	25,5	22,0				
		25,0	35,6	25,0	25,0	25,0	25,0	25,0	25,0	22,0				
30,0		50,0	20,8	47,2	43,1	39,6	36,6	34,0						
		25,0	30,0	25,0	25,0	25,0	25,0	25,0						

Speeds

380 V 60 Hz			
Motor	122,4 KW	3 x 5,2 KW	4 x 9,0 KW
Speeds	t = 2,5 min	0,67 rpm	v = 30,0 m/min

Power required - top crane

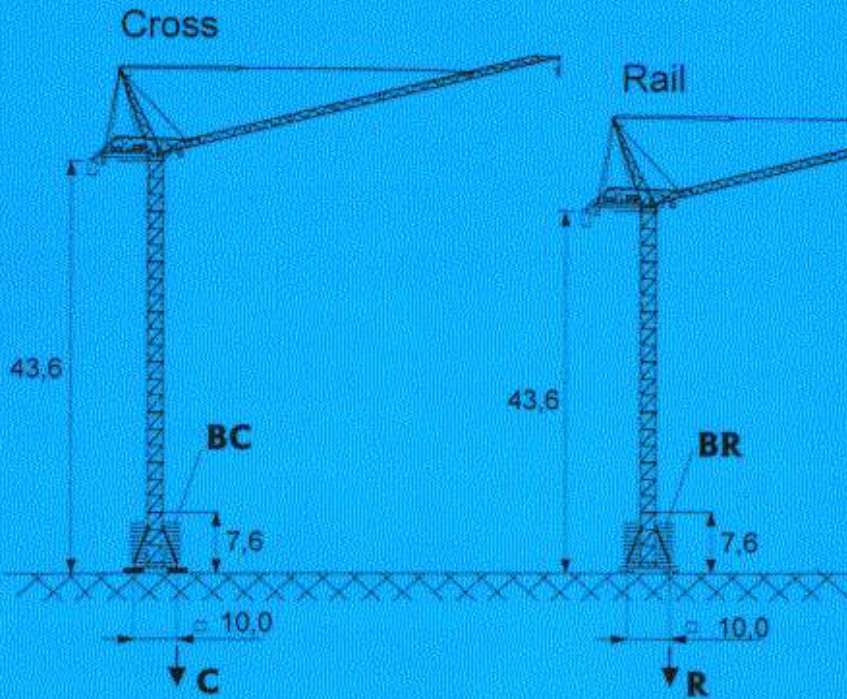
380 V	Hoist unit (KW)		
60 Hz	180,0		
KW-kVA	320-400		

Counterweight

	Hoist unit (KW)		
Jib	180,0		
all lengths	80,0 t		

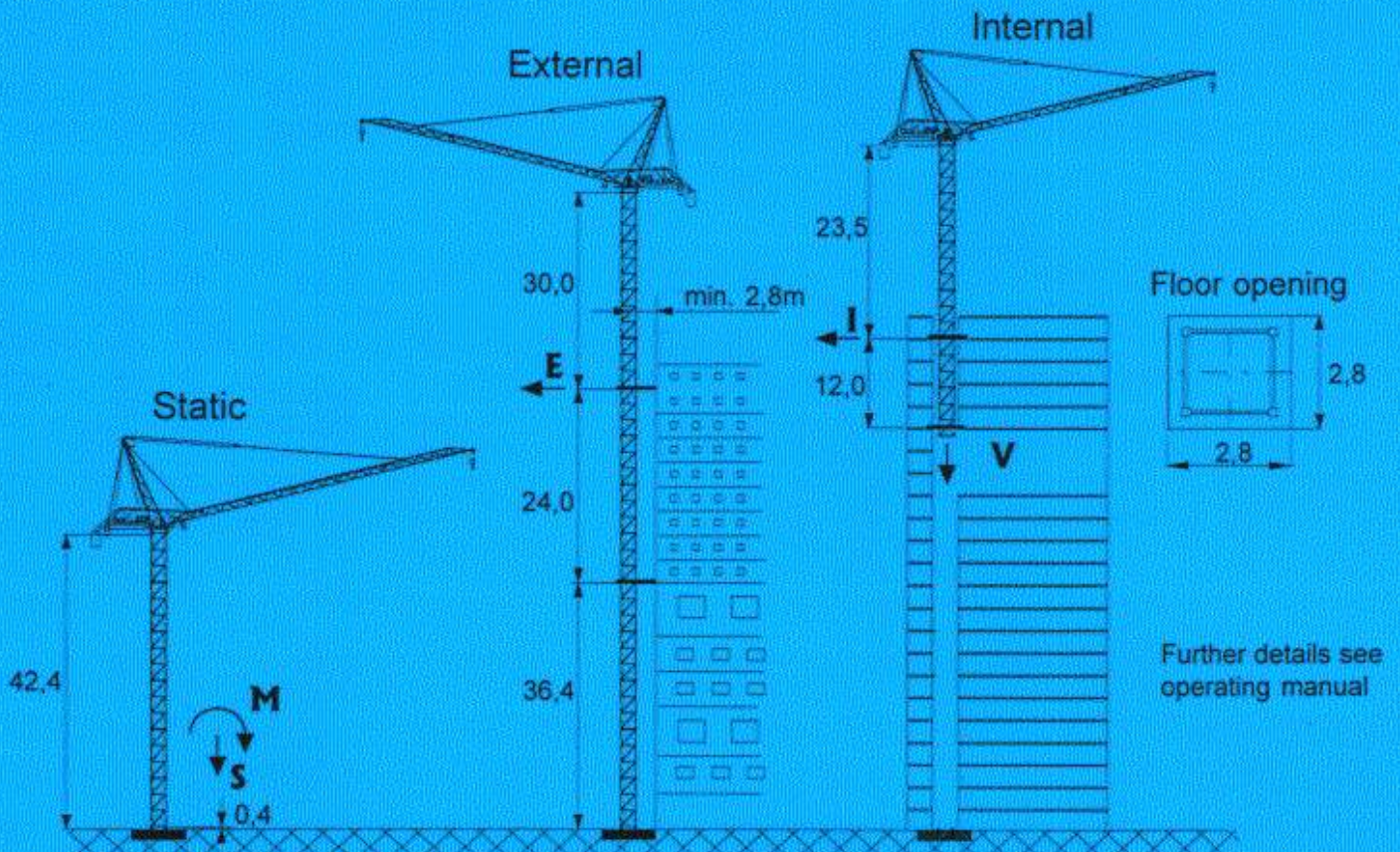
BN 805

TOWER TG 24



$C(t)$	○
	▲
	BC
$R(t)$	○
	▲
	BR
$E(t)$	
$I(t)$	
$V(t)$	
$S(t)$	
$M(mt)$	

○ in service
▲ out of service
V-S without load
all measures in m

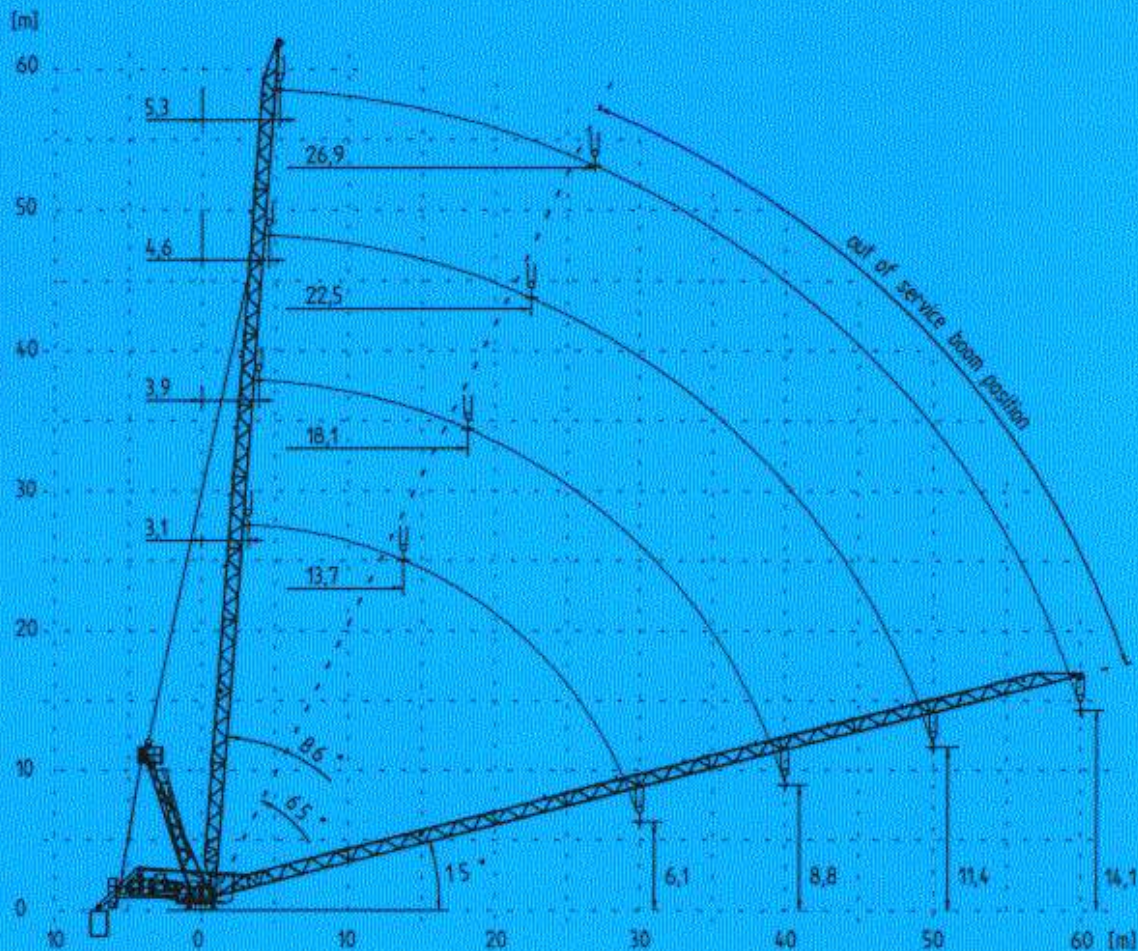


Edition 09.96 Subject to modification

Further details see operating manual

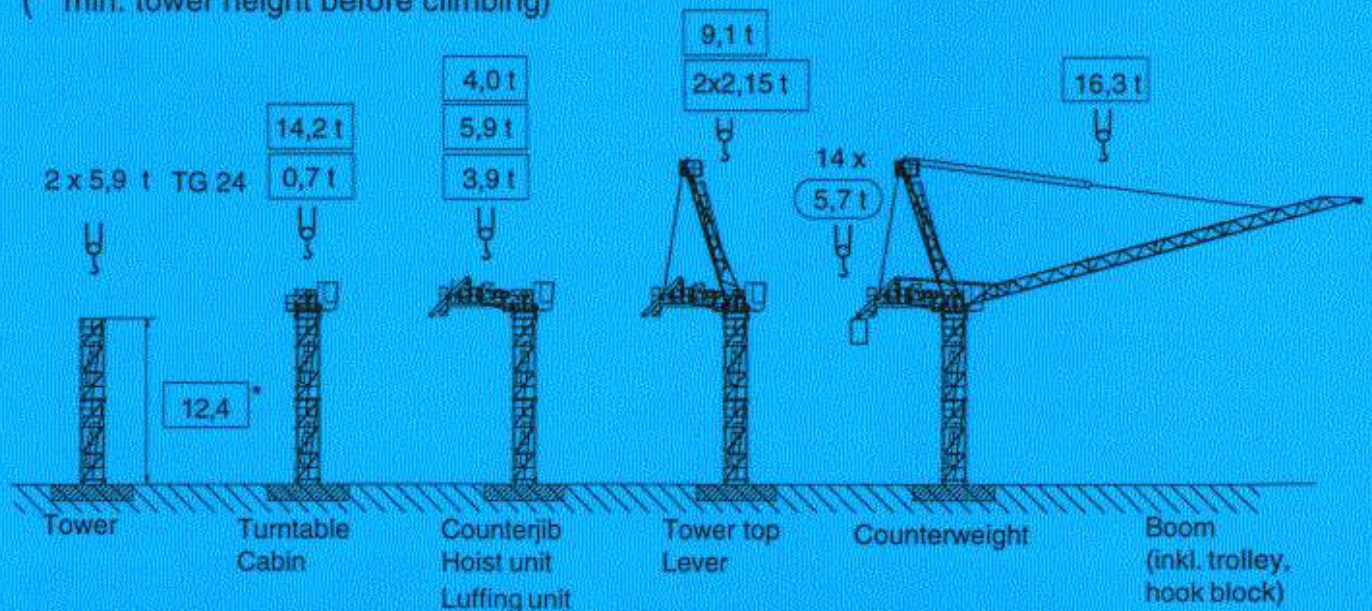
BN 805

Boom positions



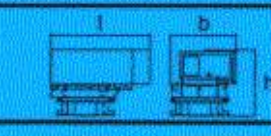
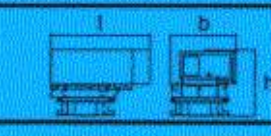







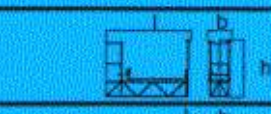




Erection steps & app. weights (boom length 60,0 m)

(* min. tower height before climbing)



Crane transport

Upper part of crane

Nb.	Description		Dimensions m			Weight per piece t
			l	b	h	
1	Turntable + KDA + Switch board + Cabin		3,91	2,58	3,00	14,2
1	Counter jib + Hoist unit 180KW WB + Luffing unit + Platform + Railing		8,10	4,35	2,45	13,8
1	Counter jib + Railing + Platform		7,20	3,45	2,45	3,95
2	Ballast lever		5,10	1,20	0,85	2,15
1	Hoist unit 180 KW WB + Hoist rope		5,10	2,40	1,90	5,90
14	Counterweight BG		1,20	0,30	2,10	5,70
1	Tower top		13,75	2,80	2,15	9,10
1	Boom section AS		9,55	1,95	1,77	3,20
1	Boom section AS		10,53	1,92	1,77	3,15
1	Boom section AS		10,47	1,92	1,84	2,75
3	Boom section AS		10,53	1,92	1,77	2,40
1	Maintenance trolley		2,10	0,41	1,00	0,20
1	Hook block 4-fall		1,80	0,50	2,95	1,70
1	Tower section TG 24		6,04	2,32	2,34	5,90
1	Climbing unit KE 24		11,17	3,10	3,25	15,00