

LUFFING CRANE BN-555

Tower TG 23

CE

FEM

A3

Max. load moment

6400 kNm

Max. lifting capacity

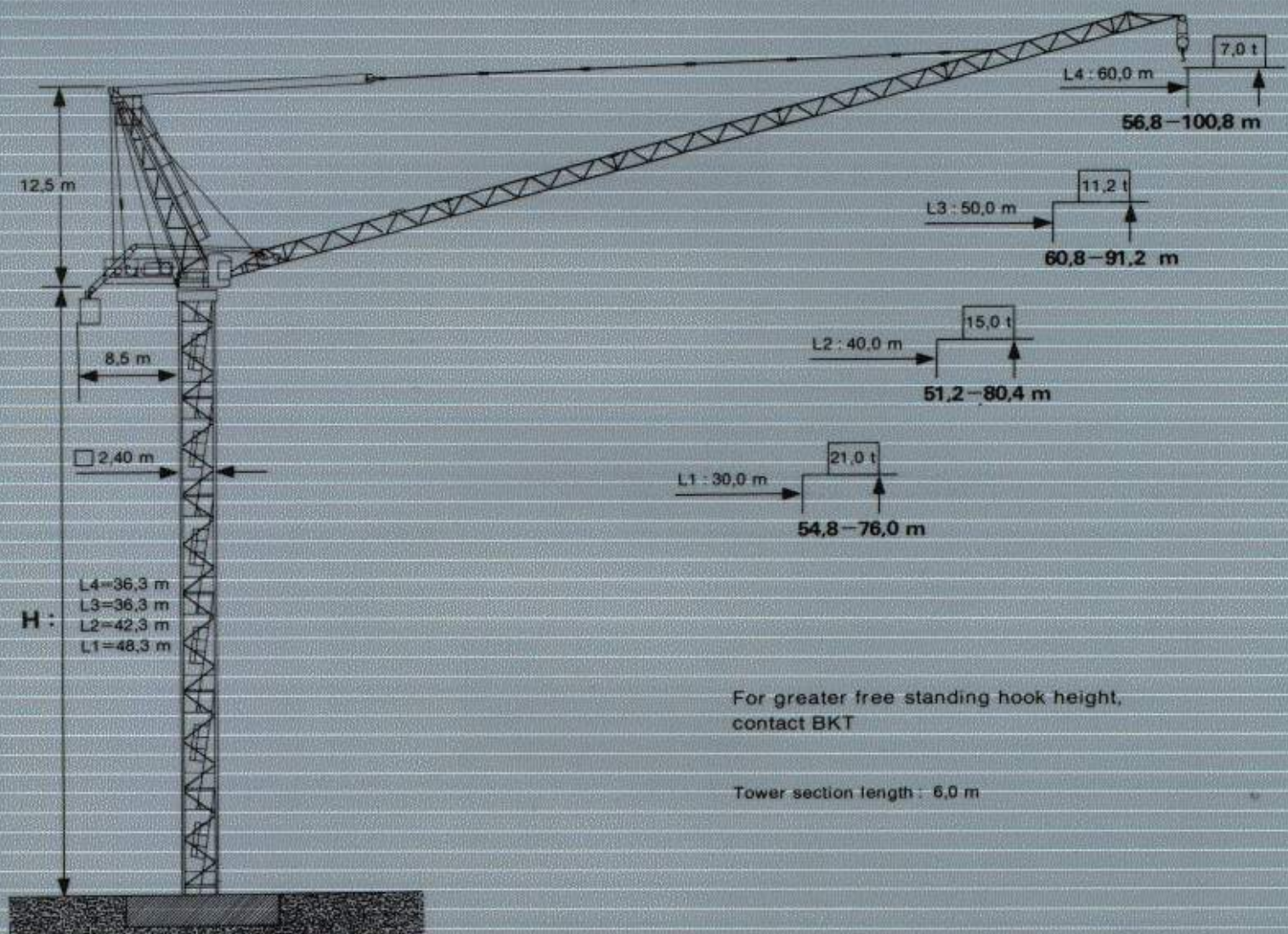
32.0 t

Max. radius

60.0 m

Frequency

60Hz



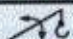





Technical data

BN-555

Radius and capacity

Jib Length	Max. capacity		Radius (m) and capacity (t)												
	t	m	20,0	22,0	24,0	26,0	28,0	30,0	35,0	40,0	45,0	50,0	55,0	60,0	
L4 60,0 m	16,0	5,7-27,5					15,68	14,60	12,43	10,80	9,53	8,52	7,69	7,00	
L3 50,0 m	32,0	4,5-18,5	29,50	26,73	24,42	22,46	20,79	19,33	16,43	14,25	12,56	11,20			
L2 40,0 m	32,0	3,3-19,4	31,00	28,09	25,67	23,62	21,86	20,33	17,29	15,00					
L1 30,0 m	32,0	2,1-20,0	32,00	29,00	26,50	24,38	22,57	21,00							

Speeds

	$t = 2,35 \text{ min}$	79,2 kW - WB							
	$n = 0 - 0,63 \text{ min}^{-1}$	2×6,6 kW - WB							
	$v = 0 - 30,0 \text{ min}$	2×9,0 kW - FK							
		1. Gear	36,0 m/min	16,0 t		1. Gear	18,0 m/min	32,0 t	122,4 kW/WB
			3,6 m/min				1,8 m/min		
		2. Gear	56,0 m/min	10,8 t		2. Gear	28,0 m/min	21,6 t	
			5,6 m/min				2,8 m/min		
		3. Gear	92,0 m/min	6,5 t		3. Gear	46 m/min	13,0 t	
			9,2 m/min				4,6 m/min		
		4. Gear	146,0 m/min	3,8 t		4. Gear	73,0 m/min	3,6 t	
			14,6 m/min				7,3 m/min		
		HH _{max} = 180,0 m				HH _{max} = 90,0 m			
		380 V - 60 Hz	power required - upper part of crane				260,0 kVA		