

EPEC LTD - BKT CRANES

Activities : serial and special cranes engineering

Tel. : 001.41/37.22.08.44.

Fax : 001.41/37.22.08.52.

FEM A 3

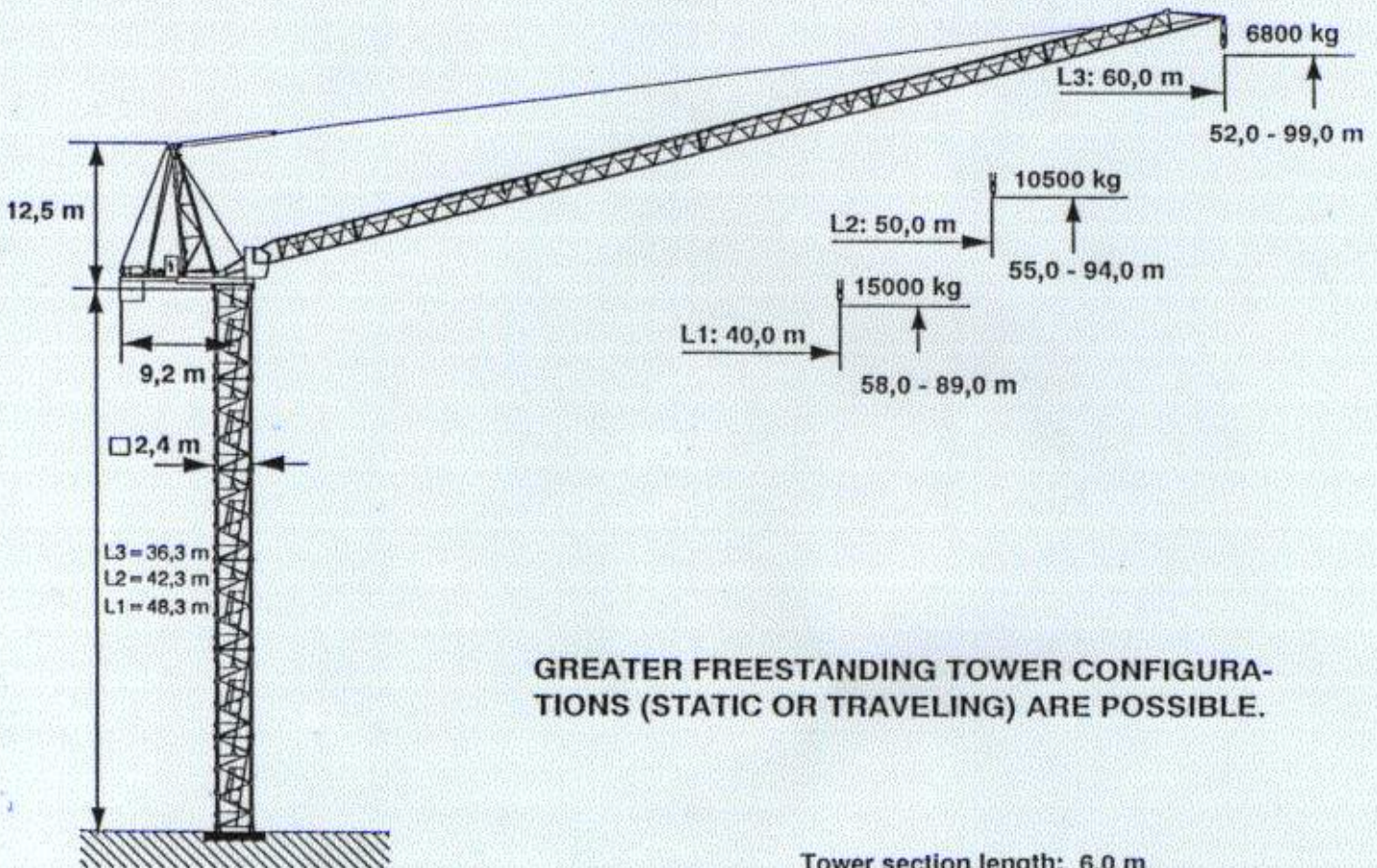
Max. load moment 6210 kNm

Max. lifting capacity 32,0 t

Max. radius 60,0 m

BKT-Crane BN 500

Tower TS 24



GREATER FREESTANDING TOWER CONFIGURATIONS (STATIC OR TRAVELING) ARE POSSIBLE.

Tower section length: 6,0 m

EPEC LTD - BKT CRANES

Activities : serial and special cranes engineering

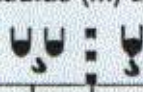
Tel. : 001.41/37.22.08.44.

Fax : 001.41/37.22.08.52.


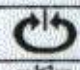




BN 500 FEM A 3

Hoisting unit 102 kW SL / WB

Radius and capacity

Jib	Max. capacity		Radius (m) and capacity (t)											
														
	m		19,4	22,0	24,0	27,0	30,0	33,0	36,0	40,0	45,0	50,0	55,0	60,0
L 3 60,0 m	16,0 t	5,9 - 26,8			16,00	15,84	14,20	12,85	11,73	10,50	9,27	8,28	7,47	6,80
L 2 50,0 m	32,0 t	4,7 - 17,4	28,64	25,14	22,96	20,30	18,17	16,42	14,97	13,38	12,75	10,5		
L 1 40,0 m	32,0 t	3,5 - 19,4	28,49	26,07	22,70	20,73	18,79	17,18	15,0					

Speeds

	t = 1,8 min		K - SL	102,0 kW			
	t = 3,2 min		K - SL	66,0 kW			
	n = 0 - 0,71 min ⁻¹		K - WB	3 x 3,5 kW			
	v = 0 - 25 m/min		K - PU	2 x 7,5 kW			
Type SL-WB 102 	HK -  = max. 130 m 3-layers						
		1.Gear	122 m/min	3,9 t	1.Gear	61 m/min	7,8 t
			12,2 m/min			6,1 m/min	
		2.Gear	74 m/min	6,9 t	2.Gear	37 m/min	13,8 t
			7,4 m/min			3,7 m/min	
		3.Gear	48 m/min	10,7 t	3.Gear	24 m/min	21,4 t
			4,8 m/min			2,4 m/min	
		4.Gear	30 m/min	16,0 t	4.Gear	15 m/min	32,0 t
3,2 m/min			1,5 m/min				
380 V 50 Hz 3 Ph	Total motor output				221/185 kW		
	Connection power				375/315 kVA		