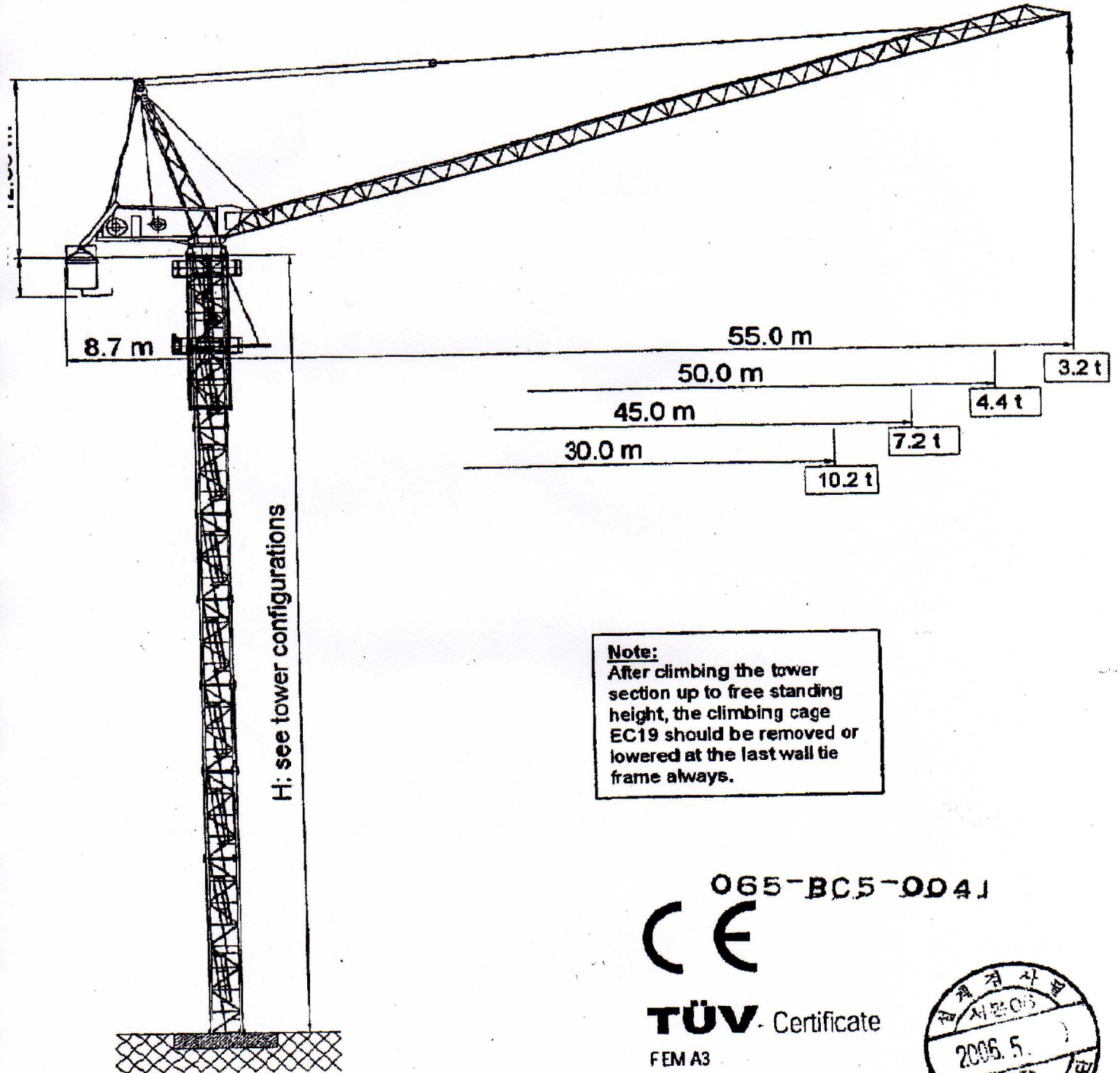


BN280-18A

BN280 Length and Heights



Note:
After climbing the tower section up to free standing height, the climbing cage EC19 should be removed or lowered at the last wall tie frame always.

065-BC5-004J



TÜV - Certificate

FEM A3

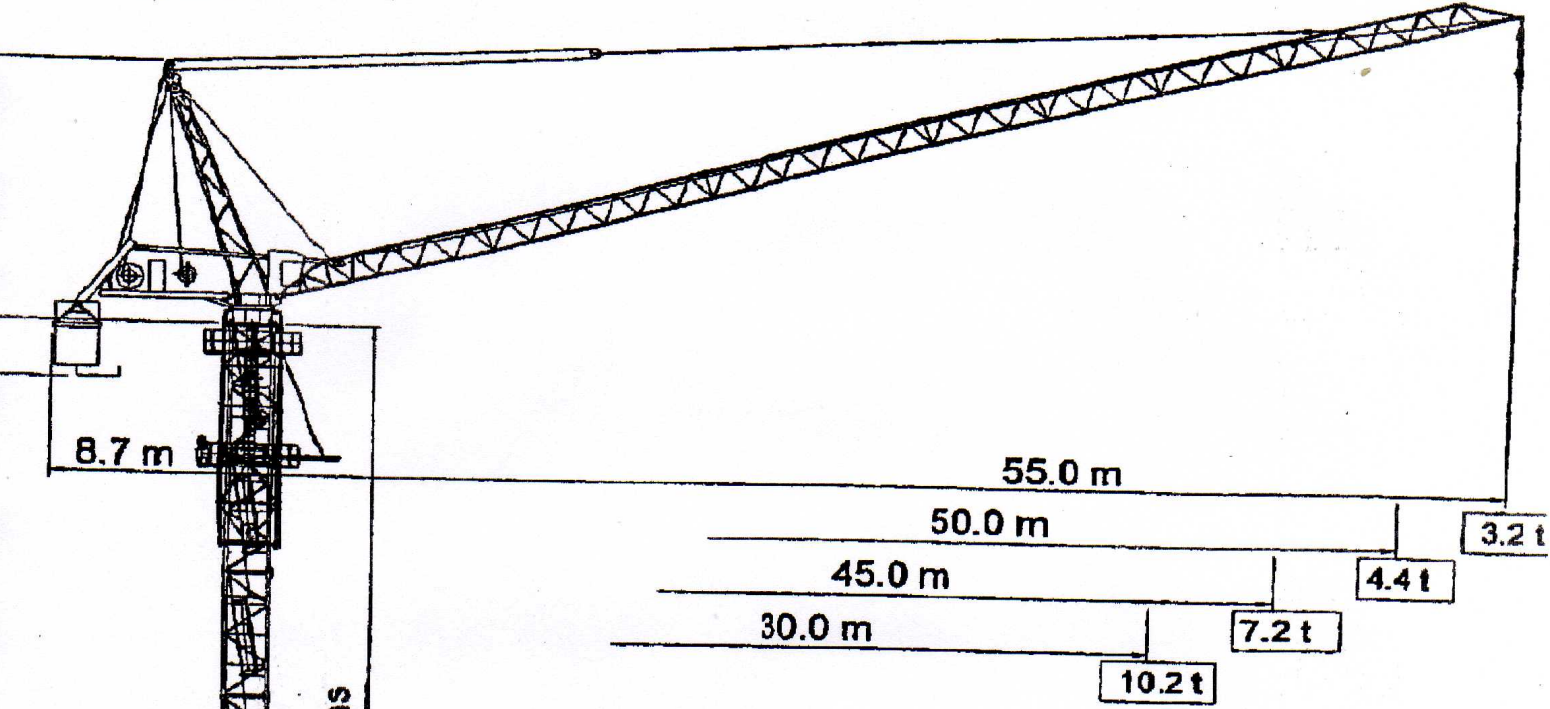
DIN 15018 H1 - B3



BN280-18A

조립도

2



H: see tower configurations

| Hoisting | 79 kW / 60 Hz | | | | | | | | | | | |
|---|------------------|-------|------------|------|-------|-------|------------|-------|-------------------------------|---------|------------|-------|
| | 3 | | | 3 | | | 3 | | | | | |
| No. of Layer on Drum | 10 | | 5 | | 10 | | 5 | | 10 | | 5 | |
| Max. Hook Travel | 225m | | 100m | | 300m | | 130m | | 450m | | 200m | |
| | Load | | Max. Speed | | Load | | Max. Speed | | Load | | Max. Speed | |
| | t | m/min | m/min | t | m/min | m/min | t | m/min | m/min | t | m/min | m/min |
| 1. Gear | 18.0 | 20.8 | 16.3 | 13.5 | 27.7 | 21.7 | 9.0 | 41.6 | 32.5 | | | |
| 2. Gear | 10.5 | 33.1 | 28.9 | 7.7 | 44.1 | 34.5 | 5.2 | 66.1 | 51.9 | | | |
| 3. Gear | 6.2 | 51.9 | 40.7 | 4.4 | 69.3 | 54.2 | 3.0 | 100.9 | 81.3 | | | |
| 4. Gear | 3.4 | 82.8 | 64.9 | 2.3 | 110.5 | 86.5 | 1.55 | 165.7 | 130 | | | |
| Minimum speed is approx. 10% of the rest Max. speed | | | | | | | | | | | | |
| Lifting | 54 kW / 60 Hz | | | | 2 min | | | | Time from max. to min. radius | | | |
| Swiveling | 2 x 6 kW / 60 Hz | | | | | | | | 1.2 rpm | | | |
| Power Required for Swiveling Top Part of Crane | | | | | | | | | | 150 kVA | | |



TÜV-Certificate
F.E.M. 1.001 - 1987
DIN 15018 H1 - B3

06-BC5 0041



16

3

BN280-18A

BN280
Radius and capacity

Radius and Capacity:

(2-fall)

| | | Radius(m) | t/m | 10 | 15 | 20 | 25 | 30 | 35 | 40 | 45 | 50 | 55 |
|------------|----|------------|-----|-----|-----|-----|-----|-----|-----|-----|-----|-----|-----|
| Jib | 55 | 5.5 - 23.6 | 9.0 | 9.0 | 9.0 | 9.0 | 8.4 | 6.8 | 5.7 | 4.8 | 4.2 | 3.6 | 3.2 |
| | 50 | 5.0 - 28.5 | 9.0 | 9.0 | 9.0 | 9.0 | 9.0 | 8.5 | 7.0 | 5.9 | 5.1 | 4.4 | |
| | 45 | 4.5 - 32.5 | 9.0 | 9.0 | 9.0 | 9.0 | 9.0 | 9.0 | 8.2 | 6.8 | 5.7 | | |
| | 40 | 4.0 - 34.0 | 9.0 | 9.0 | 9.0 | 9.0 | 9.0 | 9.0 | 8.7 | 7.2 | | | |
| | 30 | 3.0 - 30.0 | 9.0 | 9.0 | 9.0 | 9.0 | 9.0 | 9.0 | | | | | |

Radius and Capacity:

(3-fall)

| | | Radius(m) | t/m | 10 | 15 | 20 | 25 | 30 | 35 | 40 | 45 | 50 | 55 |
|------------|----|------------|------|------|------|------|------|-----|-----|-----|-----|-----|----|
| Jib | 50 | 5.0 - 18.8 | 13.5 | 13.5 | 13.5 | 12.6 | 9.8 | 8.0 | 6.7 | 5.7 | 4.9 | 4.3 | |
| | 45 | 4.5 - 21.8 | 13.5 | 13.5 | 13.5 | 11.5 | 9.3 | 7.7 | 6.5 | 5.6 | | | |
| | 40 | 4.0 - 22.6 | 13.5 | 13.5 | 13.5 | 12.1 | 9.9 | 8.3 | 7.1 | | | | |
| | 30 | 3.0 - 22.8 | 13.5 | 13.5 | 13.5 | 12.3 | 10.2 | | | | | | |
| | | | | | | | | | | | | | |

Radius and Capacity:

(4-fall)

| | | Radius(m) | t/m | 10 | 15 | 20 | 25 | 30 | 35 | 40 | 45 | 50 | 55 |
|------------|----|------------|------|------|------|------|------|------|-----|-----|-----|----|----|
| Jib | 45 | 4.5 - 15.9 | 18.0 | 18.0 | 18.0 | 14.1 | 11.0 | 9.0 | 7.5 | 6.4 | 5.6 | | |
| | 40 | 4.0 - 16.9 | 18.0 | 18.0 | 18.0 | 15.1 | 11.9 | 9.8 | 8.2 | 7.1 | | | |
| | 30 | 3.0 - 17.1 | 18.0 | 18.0 | 18.0 | 15.3 | 12.2 | 10.1 | | | | | |
| | | | | | | | | | | | | | |

~~065 BC 5-0041~~



20

4

LUFFING CRANE



BN 280-18

2/3/4 – Fall

| Ps. | Description | Shape | L (m) | B (m) | H (m) | Kg* | Ps. | Description | Shape | L (m) | B (m) | H (m) | Kg* |
|-----|------------------------------|-------|-------|-------|-------|------|-----|--------------------------------------|-------|-------|-------|-------|------|
| 1 | Jib section 1 | | 9.56 | 1.56 | 1.56 | 1796 | 1 | Swing | | 3.97 | 1.84 | 0.75 | 1352 |
| 1 | Jib section 2 | | 10.50 | 1.56 | 1.56 | 1528 | 2 | Moving bar | | 8.68 | 0.31 | 0.31 | 466 |
| 1 | Jib section 3 | | 10.50 | 1.56 | 1.56 | 1448 | 10 | Counterweight | | 1.80 | 0.24 | 3.00 | 3090 |
| 3 | Jib section 4 | | 5.37 | 1.56 | 1.56 | 699 | 1 | Counterweight frame | | 2.10 | 2.92 | 1.20 | 755 |
| 1 | Jib section 5 | | 10.50 | 1.56 | 1.56 | 1279 | 1 | Counterjib with hoist + luffing unit | | 6.25 | 4.25 | 2.00 | 9160 |
| 1 | Tower top | | 11.6 | 2.30 | 1.90 | 3135 | 1 | Counterjib with platform and railing | | 6.25 | 4.25 | 1.65 | 2620 |
| 1 | Tower Section TS19-06S | | 6.00 | 2.25 | 2.25 | 3031 | 1 | Hoist unit + rope | | 3.10 | 1.70 | 1.80 | 3200 |
| 1 | Tower Section TS19-06RS | | 6.00 | 2.25 | 2.25 | 3533 | 1 | Luffing unit + rope + brake | | 2.70 | 2.10 | 1.50 | 3340 |
| 1 | Basic Tower Section TS19-12S | | 12.00 | 2.25 | 2.25 | 6754 | 1 | Turntable + slewing unit | | 4.73 | 2.40 | 3.20 | 9090 |
| 1 | Climbing Unit EC19 | | 11.00 | 2.68 | 2.75 | 4648 | 1 | Hook-block | | 1.20 | 0.40 | 1.91 | 740 |
| 1 | Climbing Traverse | | 1.95 | 0.1 | 0.51 | 400 | | | | | | | |

(*) Weight per piece

Distributed by



Am Helsterbusch 18a
19246 Valluhn
Germany
www.bktcrane.com
info@bktcrane.com