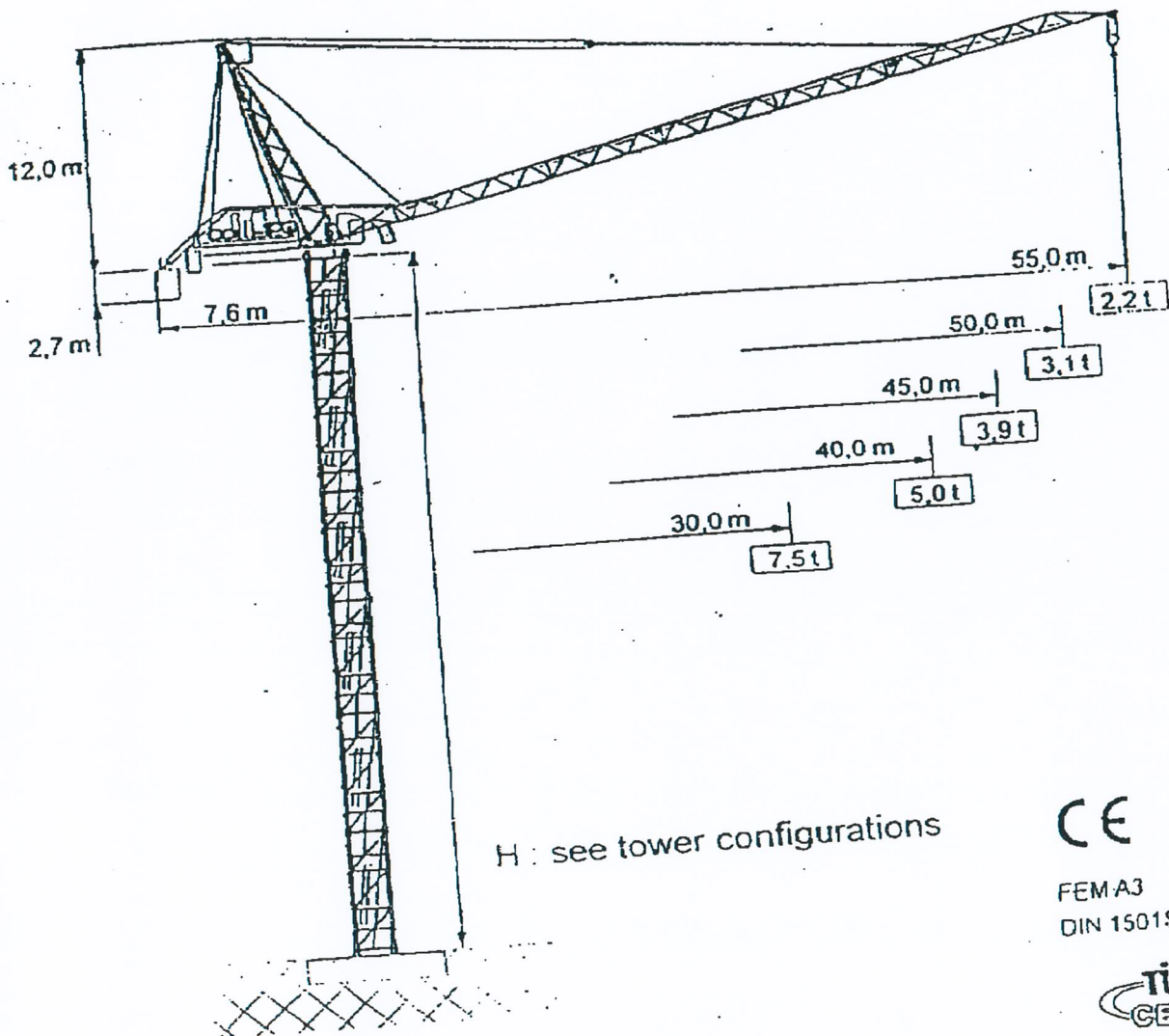




타워크

# LUFFING CRANE BN 205 -16

2/4- fall



CE

FEMA3  
DIN 15018 H1 - B3



# BN 205-16

2/4-fall

## Radius and capacity

Jib		max. Capacity		m x t										
m	Rope fall	t	m	10	18	20	22	25	30	35	40	45	50	55
55,0		8,0	16,6	8,00	7,34	6,58	5,95	5,20	4,28	3,63	3,14	2,76	2,45	2,20
50,0		8,0	20,5	8,00	8,00	8,00	7,43	6,50	5,37	4,56	3,95	3,48	3,10	
45,0		16,0	12,0	11,9	10,5	9,40	8,50	7,42	6,10	5,16	4,45	3,90		
		8,0	23,3	8,00	8,00	8,00	8,00	7,42	6,10	5,16	4,45	3,90		
40,0		10,0	10,0	10,0	11,7	10,5	9,50	8,30	6,83	5,79	5,00			
		8,0	25,9	8,00	8,00	8,00	8,00	8,00	6,83	5,79	5,00			
30,0		16,0	14,6	14,5	12,8	11,5	10,4	9,10	7,50					
		8,0	28,2	8,00	8,00	8,00	8,00	8,00	7,50					

### Speeds

380 V			
60 Hz	44 kW	2 x 4,2 kW	2 x 6,6 kW
Motor	t = 2,0 min	0,97 rpm	v = 30,0 m/min
Speeds			

### Power required - top crane

380 V 60 Hz	Hoist unit ( kW )	
	54	79
kW-kVA	106-133	132-165

### Counterweight

Jib	Hoist unit ( kW )	
	54	79
all lenghts	22,4 t	22,4 t

Edition 09.07 Subject to modification

von der Berufsgenossenschaft ermächtigter  
Sachverständiger für die Prüfung von Kränen  
3G-Z 725  
D-81249 MÜNCHEN, Kainacher Straße 3  
Telefon 089 187 23 187

Radius and capacity

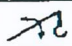

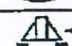
Boom	Max. capacity		Radius (m) and capacity (t)								
	t	m	15,0	20,0	25,0	30,0	35,0	40,0	45,0	50,0	55,0
L 5 55,0 m	8,0	4,8 - 16,6		6,58	5,20	4,28	3,63	3,14	2,76	2,45	2,20
L 4 50,0 m	8,0	4,5 - 20,5		8,00	6,50	5,37	4,56	3,95	3,48	3,10	
L 3 45,0 m	16,0	4,2 - 12,0	12,70	9,40	7,42	6,10	5,16	4,45	3,90		
L 2 40,0 m	16,0	3,9 - 13,3	14,17	10,50	8,30	6,83	5,79	5,00			
L 1 30,0 m	16,0	3,3 - 14,6	15,50	11,50	9,10	7,50					

2

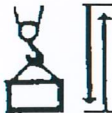

T01  
T0W  
H00R  
101

61-BC4-000 2

Speeds

	t = 2,0 min	44,4 kW-WB
	n = 0 - 0,97 min <sup>-1</sup>	2x4,2 kW-WB
	v = 0 - 30,0 m/min	2x6,6 kW-FK

		1.Gear	38,0 m/min	8,0 t	1.Gear	19,0 m/min	16,0 t	79,2 kW/WB
			3,8 m/min			1,9 m/min		
		2.Gear	96,0 m/min	3,9 t	2.Gear	48,0 m/min	7,8 t	
			9,6 m/min			4,8 m/min		
		3.Gear	156,0 m/min	2,2 t	3.Gear	78,0 m/min	4,4 t	
			15,6 m/min			7,8 m/min		
		4.Gear			4.Gear			
		HH <sub>max</sub> = 350,0 m				HH <sub>max</sub> = 175,0 m		
380 V - 60 Hz power required - upper part of crane							165,0 kVA	

Part-No. 2 710 2052

Technical data