

EPEC LTD - BKT CRANES

Activities : serial and special cranes engineering

Tel. : 001.41/37.22.08.44.

Fax : 001.41/37.22.08.52.

FEM A 3

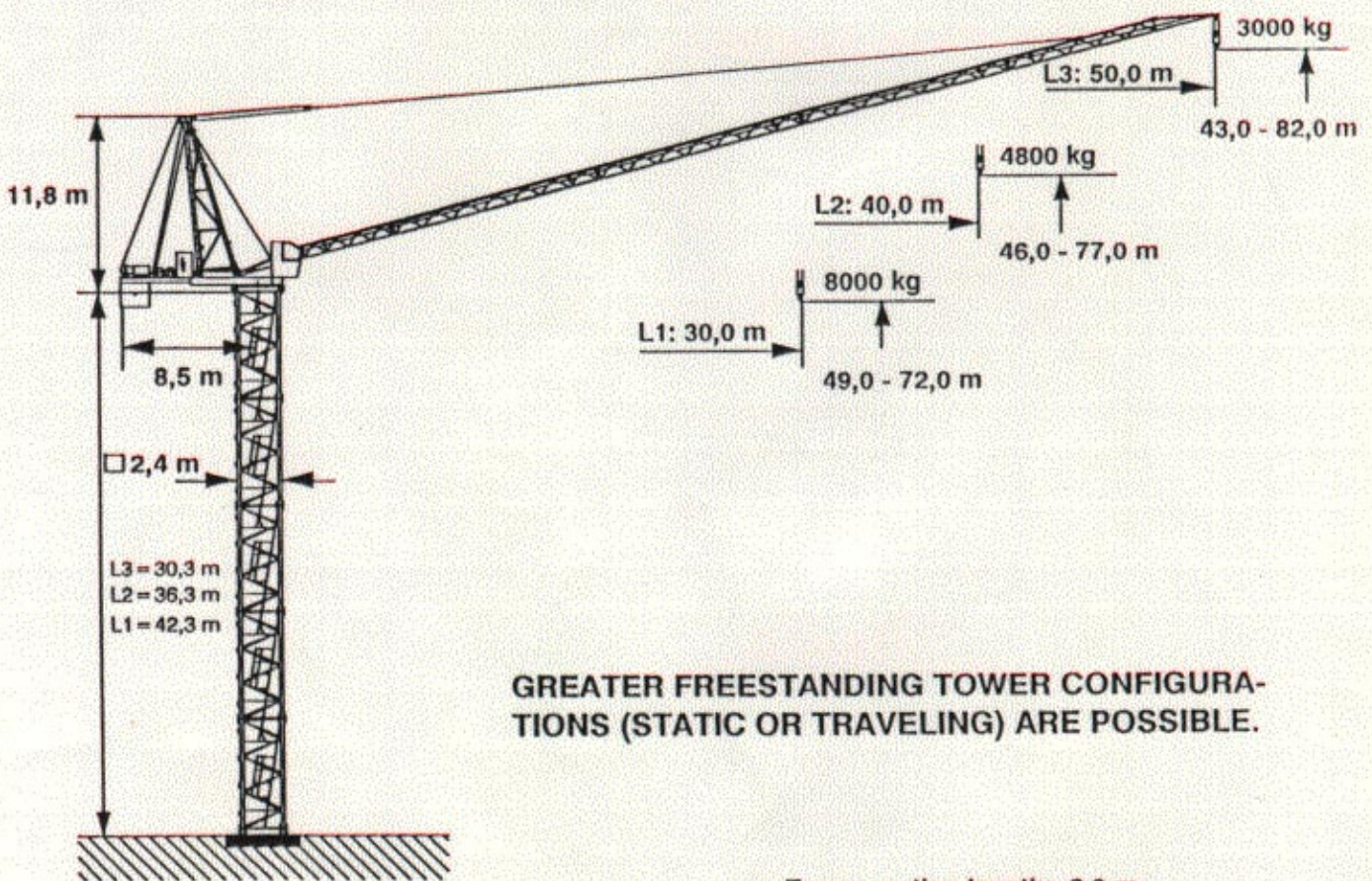
Max. load moment 2460 kNm

Max. lifting capacity 16,0 t

Max. radius 50,0 m

BKT-Crane BN 180

Tower TS 21



GREATER FREESTANDING TOWER CONFIGURATIONS (STATIC OR TRAVELING) ARE POSSIBLE.

Tower section length: 6,0 m

EPEC LTD - BKT CRANES

Activities : serial and special cranes engineering

Tel. : 001.41/37.22.08.44.

Fax : 001.41/37.22.08.52.

BN 180 FEM A 3

Hoisting unit 66 kW SL / WB

Radius and capacity

Jib	Max. capacity	Radius (m) and capacity (t)												
m		15,0	17,0	19,0	21,0	23,0	25,0	27,0	30,0	35,0	40,0	45,0	50,0	
L 3 50,0 m	8,0 t	4,6 - 19,8			8,00	7,55	6,87	6,30	5,81	5,20	4,41	3,82	3,36	3,00
L 2 40,0 m	16,0 t	3,4 - 12,8	13,63	11,97	10,66	9,59	8,71	7,98	7,35	6,56	5,55	4,80		
L 1 30,0 m	16,0 t	2,2 - 15,4	16,00	14,50	12,92	11,64	10,58	9,70	8,94	8,00				

Speeds

	t = 1,6 min		K - SL	45,0 kW				
	t = 2,5 min		K - SL	30,0 kW				
	n = 0 - 0,67 min ⁻¹		K - WB	2 x 3,5 kW				
	v = 0 - 25 m/min		K - PU	2 x 5,5 kW				
Type SL-WB 66 	HK - $\frac{1}{3}$ = max. 140 m 3-layers							
		1.Gear	118 m/min	2,7 t		1.Gear	59 m/min	5,4 t
			11,8 m/min				5,9 m/min	
		2.Gear	74 m/min	4,5 t		2.Gear	37 m/min	9,0 t
			7,4 m/min				3,7 m/min	
		3.Gear	30 m/min	8,0 t		3.Gear	15 m/min	16 t
3,0 m/min			1,5 m/min					
380 V 50 Hz 3 Ph	Total motor output				129/114 kW			
	Connection power				220/194 kVA			