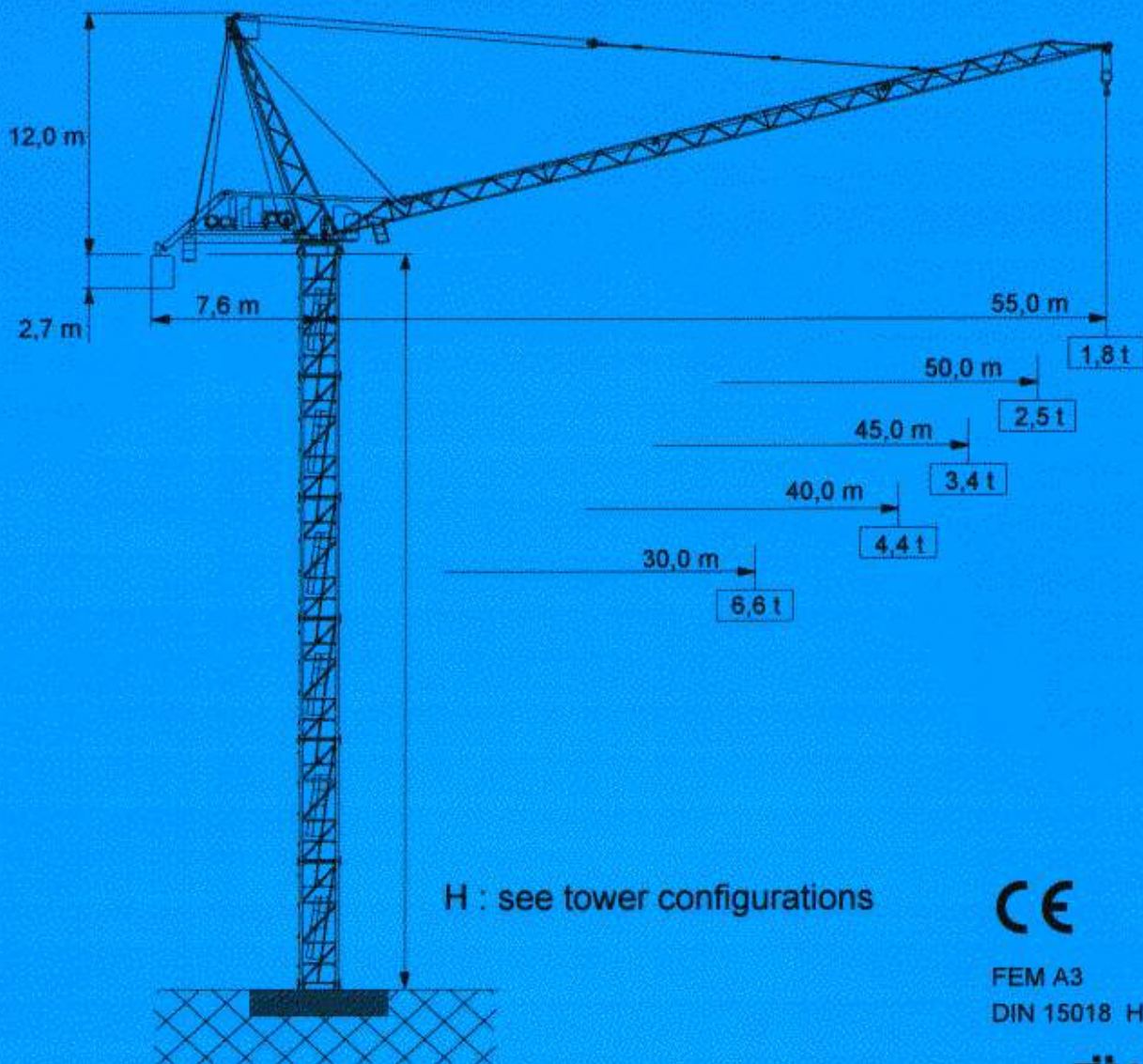


# LUFFING CRANE BN 165-12

2/4- fall



CE

FEM A3  
DIN 15018 H1 - B3

  
DIN EN ISO 9001

Edition 01.96 Subject to modification




165\_124E.PM4





# BN 165-12

## 2/4-fall

### Radius and capacity

Jib		max. Capacity		m x t										
		t	m	14	16	18	20	25	30	35	40	45	50	55
55,0		6,0	18,9	6,00	6,00	6,00	5,65	4,44	3,63	3,06	2,63	2,29	2,02	1,80
50,0		6,0	22,7	6,00	6,00	6,00	6,00	5,40	4,43	3,74	3,23	2,82	2,50	
45,0		12,0	13,8	11,8	10,3	9,10	8,15	6,44	5,30	4,49	3,88	3,40		
		6,0	26,7	6,00	6,00	6,00	6,00	6,00	5,30	4,49	3,88	3,40		
40,0		12,0	15,5	12,0	11,6	10,3	9,20	7,28	6,00	5,09	4,40			
		6,0	30,0	8,00	8,00	8,00	8,00	8,00	6,00	5,09	4,40			
30,0		12,0	16,9	12,0	12,0	11,3	10,1	8,00	6,60					
		6,0	30,0	6,00	6,00	6,00	6,00	6,00	6,00					

### Speeds

400 V 50 Hz			
Motor	28,0 KW	2 x 3,0 KW	2 x 7,5 KW
Speeds	t = 1,3 - 2,6 min	0,81 rpm	v = 25,0 m/min

### Power required - top crane

400 V 50 Hz	Hoist unit ( KW )		
	37	45	66
<b>KW-kVA</b>	71,0 - 88,8	79,0 - 98,8	100 - 125

### Counterweight

Jib	Hoist unit ( KW )		
	37	45	66
all lengths	22,4 t	22,4 t	22,4 t