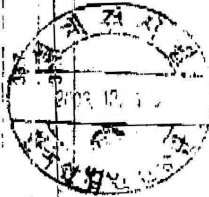


Load chart

Length of jib		Capacity		Radius and capacity																		
m	m / kg	m	kg	m	kg																	
50.0 (R=61.4)	2.2 - 17.8 8000	17.5	25.0	27.5	30.0	31.7	33.0	35.0	36.7	38.0	41.0	43.3	45.0	46.3	50.0	51.0	52.5	54.0	57.0	60.0		
55.0 (R=66.4)	2.2 - 15.5 10000	7.50	7150	5400	5750	6200	6700	7200	7600	8000	8500	9000	9500	10000	10500	11000	11500	12000	12500	13000	13500	14000
49.3 (R=48.7)	2.2 - 17.1 10000	8.20	6600	7735	8556	9120	9770	10450	11200	12000	12800	13600	14500	15400	16300	17200	18100	19000	19900	20800	21700	22600
43.3 (R=44.7)	2.2 - 19.0 10000	10.00	9950	8530	7660	6990	6590	6340	6200	6100	6000	5900	5800	5700	5600	5500	5400	5300	5200	5100	5000	4900
36.7 (R=38.1)	2.2 - 21.4 10000	10.00	10000	9520	8990	8590	8210	7850	7510	7180	6870	6580	6300	6030	5770	5520	5280	5050	4830	4620	4420	4230
31.7 (R=33.1)	2.2 - 23.1 10000	10.00	10000	10100	9270	8430	7720	7060	6460	5920	5440	5010	4630	4300	4000	3720	3460	3220	3000	2790	2600	2430

※ Load chart: 플러의 주리점

크레인 높이	외면 2층 하중	외면 1층 하중	외면 반경	비고
60.0	6000 kg	6000 kg	17.5 m	
55.0	10,000 kg	10,000 kg	15.5 m	
48.3	10,000 kg	10,000 kg	17.1 m	
43.3	10,000 kg	10,000 kg	19.9 m	
	10,000 kg	10,000 kg	21.4 m	
	10,000 kg	10,000 kg	23.1 m	

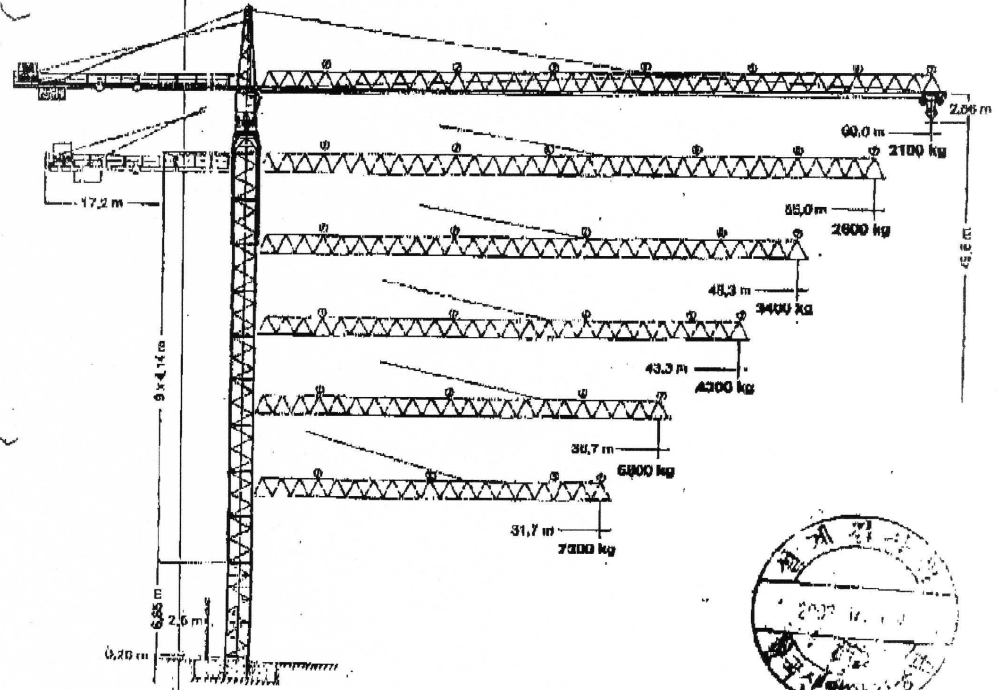


035-EC500 11

Tower Crane
Grue à tour

Turmdrehkran

185 HC



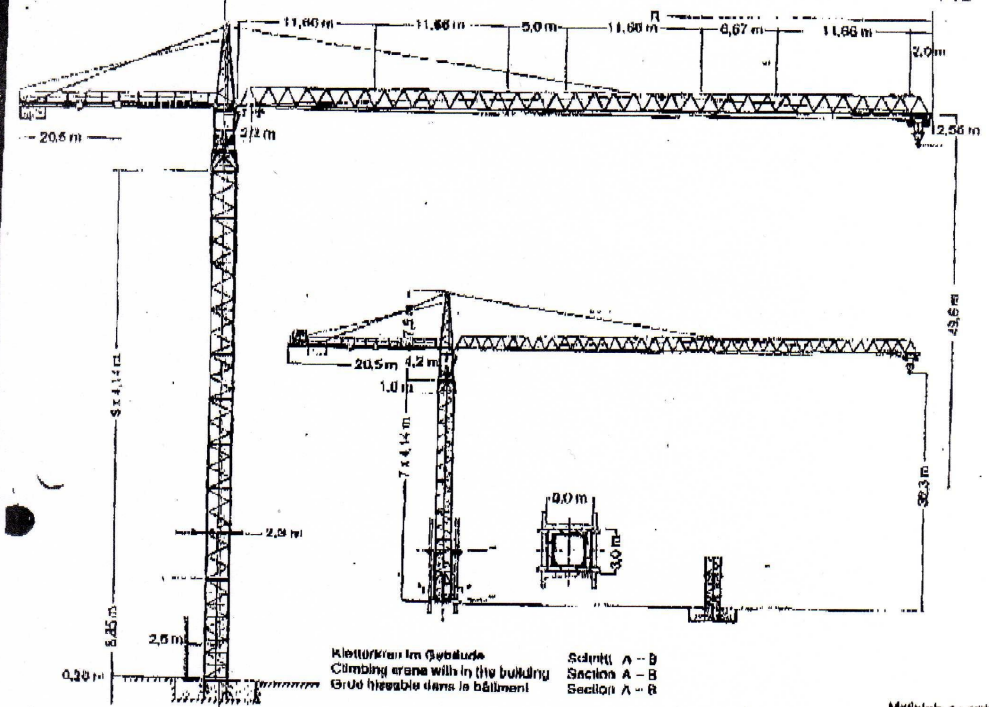
035-EC500

MultiStar 1:400
 6000 / 6000m

LIEBHERR

04 MAR '08 02:14 TOWER DESIGN

P.2



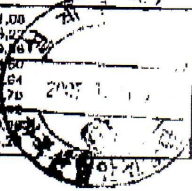
Kletterkran im Gebäude
Climbing crane with in the building
Grüo fixeable dans le bâtiment

Schnitt A - B
Section A - B
Section A - B

Maßstab: 1 : 400
scale / échelle

Hubhöhe
Hoisting height
hauteur sous crochet

Hubhöhe Hoisting height Hauteur sous crochet	stationär stationary sur pied de scellament m	fahrbar mobile roulante sur rails m
	<고정식>	<주행식 = 2개>
1	16.40	21.00
2	20.02	25.20
3	24.70	29.60
4	29.90	34.20
5	35.04	39.00
6	37.10	42.64
7	41.32	47.70
8	45.48	52.00
9	49.90	56.40



Uhrungstülck nach Montage ablassen. / Lower guide section after erection. / Délesez le cage télescopique après le montage.
Weitere Hubhöhen auf Anfrage. / Further hoist heights on request. / Hauteurs sous crochet plus élevées sur demande.

035-EC500

185 HC

6