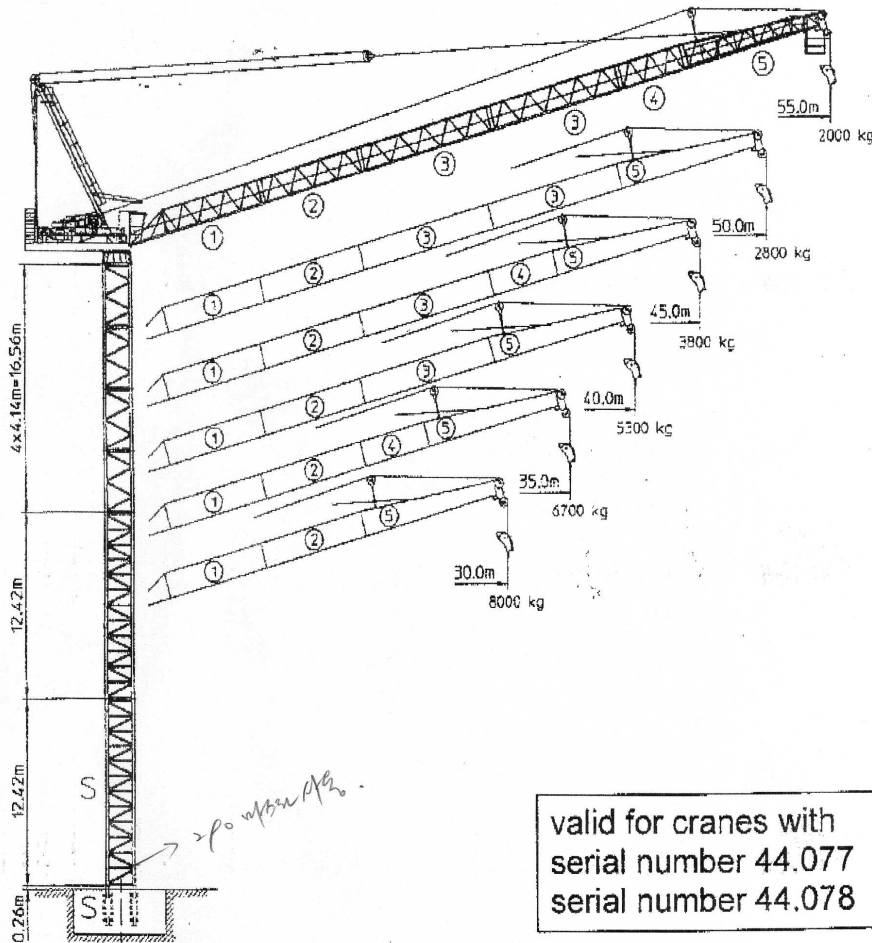


Tower Crane 160 HC-L



Tower 290 HC

valid for cranes with
serial number 44.077
serial number 44.078

Radius and capacity

Auslegerlänge length of jib longueur de flèche m	max. kg m/kg	m/kg															
		17,5	20,0	22,5	25,0	27,5	30,0	32,5	35,0	37,5	40,0	42,5	45,0	47,5	50,0	52,5	55,0
55,0	3,0-25,4 8000	8000	8000	8000	8000	7120	6240	5510	4880	4350	3880	3480	3120	2800	2510	2250	2000
50,0	3,0-26,9 8000	8000	8000	8000	8000	7750	6810	6020	5360	4790	4290	3850	3470	3120	2800		
	3,0-18,1 12000	12000	10500	8950	7730	6740	5930	5250	4670	4170	3740	3360	3020	2720	2500		
45,0	3,0-28,4 8000	8000	8000	8000	8000	8000	7380	6550	5840	5230	4700	4230	3800				
	3,0-16,5 14000	13010	10850	9390	8170	7180	6360	5680	5100	4600	4170	3780	3500				
40,0	3,0-29,7 8000	8000	8000	8000	8000	8000	7890	7090	6420	5830	5300						
	3,0-16,0 16000	14330	12140	10490	9180	8130	7260	6540	5920	5390	5000						
35,0	3,0-31,2 8000	8000	8000	8000	8000	8000	8000	7530	6700								
	3,0-16,8 16000	15220	12900	11140	9760	8640	7720	6950	6400								
30,0	3,0-30,0 8000	8000	8000	8000	8000	8000	8000										
	3,0-17,5 16000	16000	13550	11680	10210	9020	8200										

lifting capacities valid up to 100m hoisting height. Over 100m hoisting height, the lifting capacity is reduced by the additional rope weight.

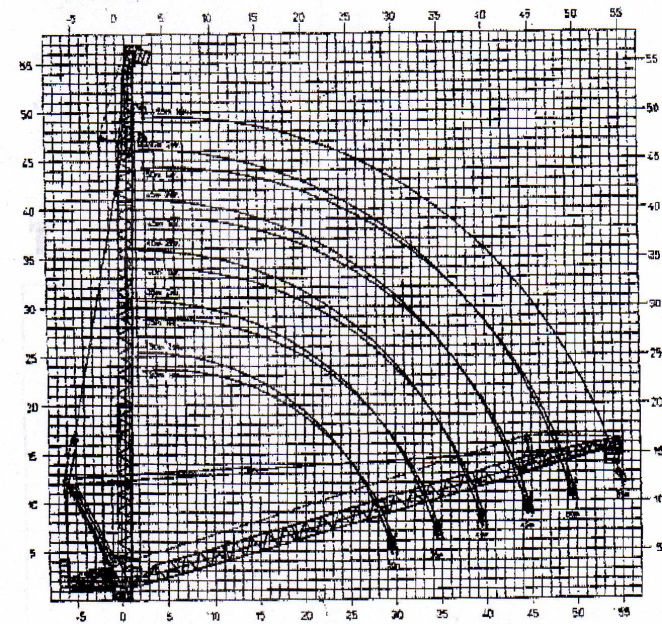
Driving units

	0,7 r.p.m.	2 x 6,3 kW
	1,3 min	65 kW + WSB
Power requirement, upper part	Hoist gear	Luffing gear
181 kVA	80 kW	65 kW

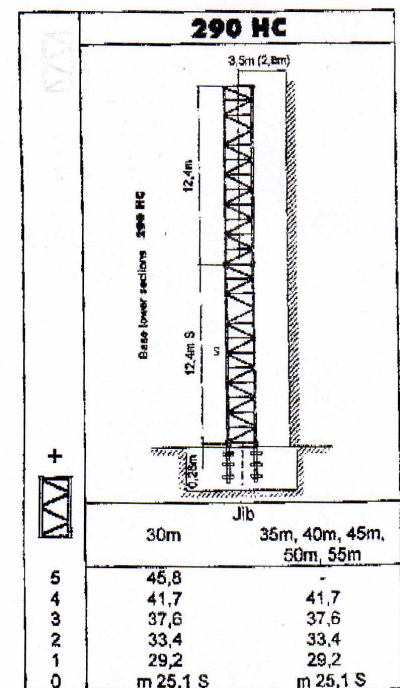
Hoist gear	Gear	kg	m/min	
80 kW WW 291 JX 409 Elmag, WSB				1
Drum capacity: 585m	296m	2	3300	6,0 / 90,0
		3	1200	11,0 / 168,0
	4 rope layers	148m	1	16000
2			7000	3,0 / 45,0
3			3200	5,5 / 83,0

LIEBHERR

Radius and hoisting height



Tower heights



Tower height calculation is based on

- Earthquake
- Wind according to DIN standard

Crane stationary without climbing equipment

Out of operation, jib position 15° - 70°
S) Reinforced tower section.

160 HC-L
serial nr. 44.077
serial nr. 44.078

Packing list

Upper part of crane				Erection weights: see instruction manual					
Item	Qty.			L (m)	B (m)	H (m)	Single weight, kg	Total weight, kg	
1	1	Slewing platform		2,28	2,74	2,37	7250	722	
2	1	Gear platform		6,14	2,31	2,51	1100	1100	
3	1	Cabin with platform		4,34	1,83	2,55	1550	1550	
4	1	Jib gantry		11,18	1,92	1,19	3750	3750	
5	1	Jib heel section 10,7m		10,89	1,73	1,76	1700	1700	
6	1	Intermediate jib section 8,0m		8,17	1,73	1,71	1000	1000	
7	1	Intermediate jib section 10,35m		10,52	1,73	1,71	1200	1200	
8	1	Intermediate jib section 5,18m		5,35	1,73	1,71	550	550	
9	1	Jib head section 10,85m		11,45	1,67	2,05	1700	1700	
Tower									
10	1	Base tower section		290 HC 290 HC S	12,42	2,3	2,3	7700 8100	7700 8100
11	1	Tower section		290 HC	4,14	2,3	2,3	2300	2300
Ballast									
12	5	Concrete ballast		4,5	0,94	0,64	4600	23000	
Small parts									
13	1	Ropes, load hook, platforms, small parts					5700	5700	

160 HC-L
serial nr. 44.077
serial nr. 44.078