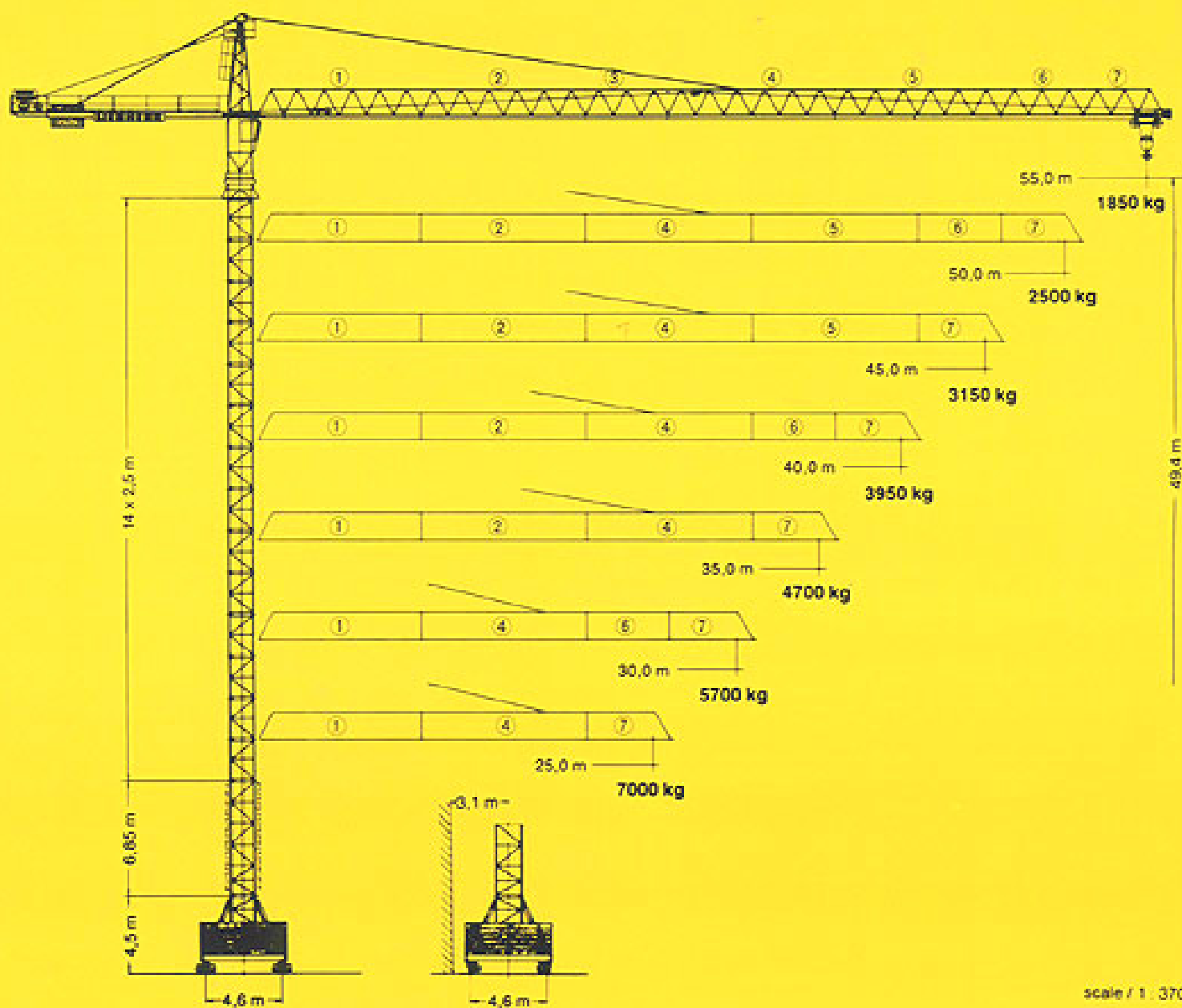
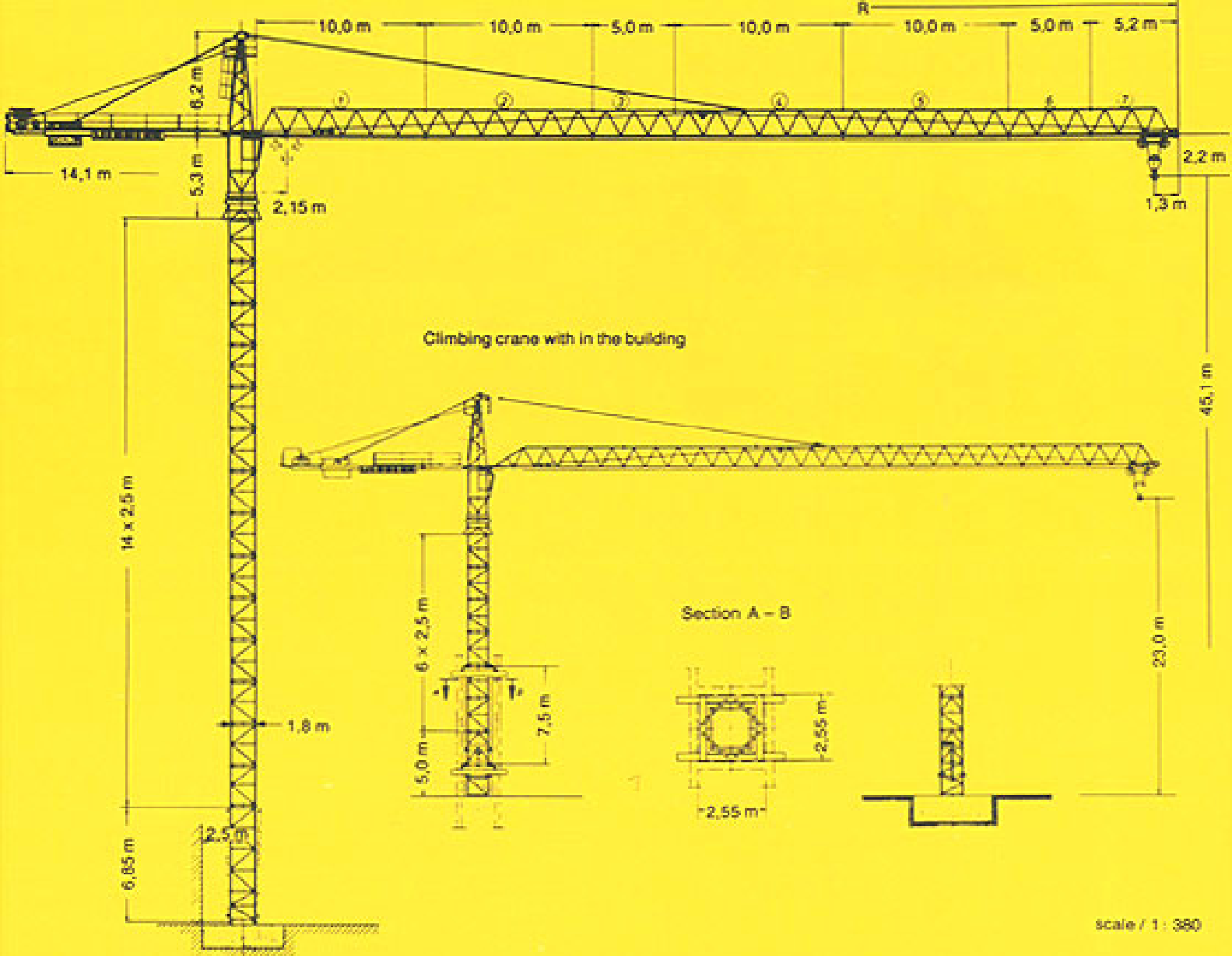


154 HC Tower Crane



scale / 1 : 370



Hoisting height

Number of tower sections	Hoisting height	
	stationary type m	Travelling type m
0	10,1	14,4
1	12,6	16,9
2	15,1	19,4
3	17,6	21,9
4	20,1	24,4
5	22,6	26,9
6	25,1	29,4
7	27,6	31,9
8	30,1	34,4
9	32,6	36,9
10	35,1	39,4
11	37,6	41,9
12	40,1	44,4
13*	42,6	46,9
14*	45,1	49,4

* Lower guide section after erection. / Further hoist heights on request.

154 HC

Data for rail-going crane




Wheel gauge	4,6 m
Track gauge	4,6 m

Interior curve radius	8,5 m
Dead weight (max. hoisting height + radius)	51870 kg

Radius and capacity

Length of jib (Slewing radius)	max. capacity	Radius and capacity																			
		18,0	19,0	20,0	21,0	22,0	23,0	25,0	27,0	30,0	32,0	35,0	37,0	40,0	42,0	45,0	47,0	50,0	52,0	55,0	
m	m/kg																				
55,0 (R = 56,3)	2,15 - 17,0 8000	7000	6620	6250	5920	5620	5340	4960	4450	3940	3650	3280	3070	2790	2630	2410	2280	2100	1990	1850	
50,0 (R = 51,3)	2,15 - 18,3 8000	8000	7680	7260	6880	6535	6220	5870	5200	4610	4280	3850	3610	3290	3100	2850	2700	2500			
45,0 (R = 46,3)	2,15 - 19,9 8000	8000	8000	7940	7530	7150	6810	6210	5700	5050	4700	4240	3970	3630	3420	3150					
40,0 (R = 41,3)	2,15 - 21,4 8000	8000	8000	8000	8000	7740	7370	6730	6180	5490	5110	4610	4320	3950							
35,0 (R = 36,3)	2,15 - 21,7 8000	8000	8000	8000	8000	7890	7510	6850	6300	5600	5200	4700									
30,0 (R = 31,3)	2,15 - 22,1 8000	8000	8000	8000	8000	8000	7650	6980	6410	5700											
25,0 (R = 26,3)	2,15 - 22,1 8000	8000	8000	8000	8000	8000	7670	7000													

Speeds

	0,9 sl/min	6,3kW 2 x 6,3kW
	10,0 / 34,0 / 67,0 m/min	5,0 kW
	25,0 m/min	2 x 3,0 kW

Total motor output with

30 kW-hoist gear 47,6(53,6)kW

Hoist gear	Gear	kg	m/min
30,0 kW, WW 240 RX 054 Elmag Hoisting height 79,0m (2 layers)	1	8000	3,5
		8000	15,0
		4900	30,0
30,0 kW, WW 240 RX 036 Elmag Hoisting height 110,0m (5 layers)	1	8000	2,92
		8000	12,7
		4900	25,0
	2	3200	7,4
		3200	32,25
		1800	63,35

Technical data